

DEMOGRAPHIC GUIDE TO NEW MEXICO

County Subdivisions and Places, 2000 Census Edition.

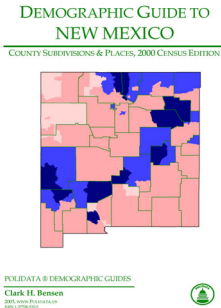
Demographic summaries for Counties, County Subdivisions and Places; AREA PROFILES summarizing 50 categories in 5 data paragraphs; easily found in an alphabetically-arranged gazetteer; RANKINGS (of Counties & Subdivisions) and THEMATIC MAPS (of Subdivisions) for over 80 factors. PRESIDENTIAL VOTE and RELIGIOUS AFFILIATION included for Counties. (Complete profiles included for selected areas; enhanced profiles available online for all areas.)

by Clark H. Bensen. POLIDATA® DEMOGRAPHIC & POLITICAL GUIDES

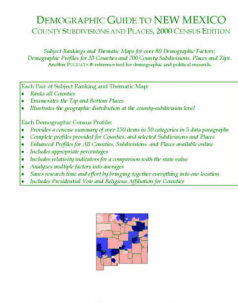
11.0 x 8.5 x 2.5 inches, 3 lb. 588 pp. ISBN 1-57708-935-9 \$139.00 2003, Polidata.

1. New edition. 2. All pages 8.5 x 11 inches. 3. Library binding in green buckram cloth. 4. Order Info: [See Notes](#)

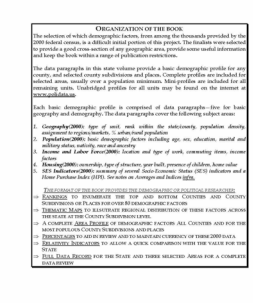
A. Purchase price includes FREE TWO YEAR Subscription to the online edition. B. Online Subscription alone: \$360.00 for TEN YEAR license. See an [online profile here](#). C. Also available in CD-ROM Edition: \$155.00 postpaid.



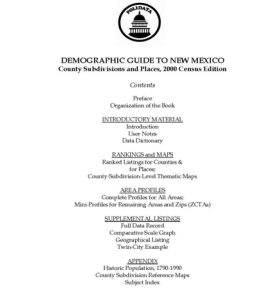
Front Page



Back Page



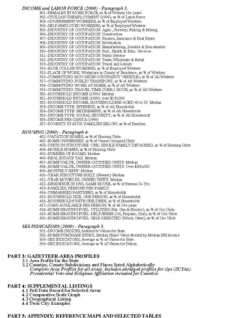
Book Org.



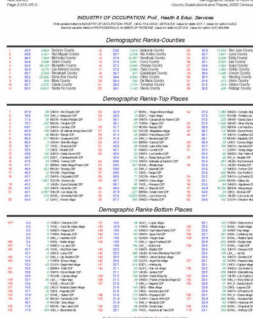
Contents



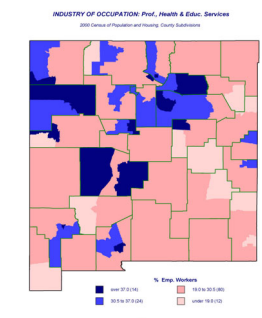
Detailed Contents



Contents (ctd.)



Demographic Rank



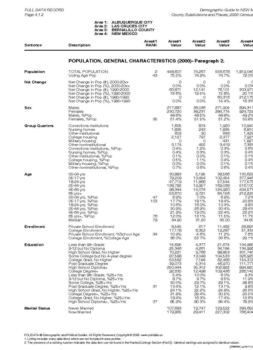
Thematic Map



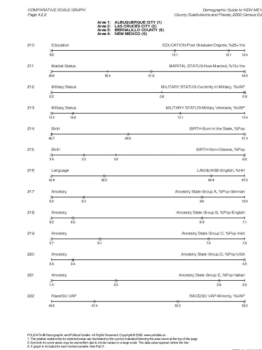
Area Profile-State



Area Profile-Sample Page



State Data Record



Comp. Scale Graph

Click on sample thumbnails above for adobe .pdf format. URL: <http://www.polidata.us/books/nm/pub/nmdoginf.htm> updated: 2003-nov-07