

DEMOGRAPHIC GUIDE TO WISCONSIN

Towns, Cities and Places, 2000 Census Edition.

Demographic summaries for Counties, County Subdivisions and Places; AREA PROFILES summarizing 50 categories in 5 data paragraphs; easily found in an alphabetically-arranged gazetteer; RANKINGS (of Counties & Subdivisions) and THEMATIC MAPS (of Subdivisions) for over 80 factors. PRESIDENTIAL VOTE and RELIGIOUS AFFILIATION included for Counties. (Complete profiles included for selected areas; enhanced profiles available online for all areas.)

by Clark H. Bensen. POLIDATA ® DEMOGRAPHIC & POLITICAL GUIDES

11.0 x 8.5 x 3.0 inches, 5 lb.

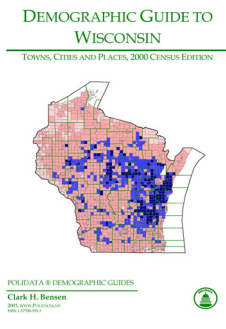
968 pp.

ISBN 1-57708-955-3 \$186.00

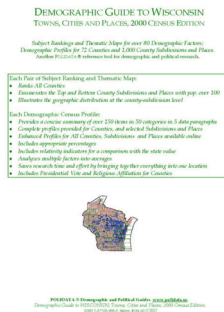
2003, Polidata.

1. New edition. 2. All pages 8.5 x 11 inches. 3. Library binding in green buckram cloth. 4. Order Info: [See Notes](#)

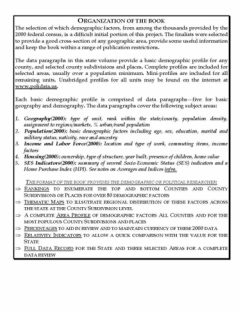
A. Purchase price includes FREE TWO YEAR Subscription to the online edition. B. Online Subscription alone: \$360.00 for TEN YEAR license. See an [online profile here](#). C. Also available in CD-ROM Edition: \$155.00 postpaid.



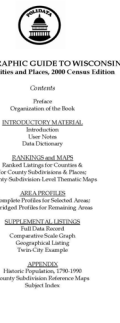
Front Page



Back Page



Book Org.

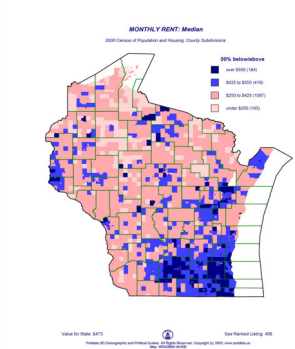


Contents

Detailed Contents

Contents (ctd.)

Demographic Rank



Thematic Map

Area Profile-State

Area Profile-Sample Page

State Data Record



Comp. Scale Graph

Click on sample thumbnails above for adobe .pdf format. URL: <http://www.polidata.us/books/wi/pub/widoginf.htm> updated: 2003-oct-02