

Race	Candidate GOP/Dem/Ind	GOP Vote	Dem Vote	Ind Vote	Total Vote	GOP %	Dem %	Ind %	Rem %	Plurality/Win	%of Marg	GOP Index
2002												
Gov	RILEY/Siegelman*	672,225	669,105	0	1,364,602*	49.3	49.0	0.0	1.7	3,120 r	0.2	0.0
LtG	Armistead+/BAXLEY	630,839	694,442	0	1,347,165*	46.8	51.6	0.0	1.6	63,603 D	4.7	0.0
Sec	Thomas+/WORLEY	630,863	632,852	0	1,289,101*	48.9	49.1	0.0	2.0	1,989 d	0.2	0.0
Trs	IVEY/Black+	660,873	609,544	0	1,300,618*	50.8	46.9	0.0	2.3	51,329 R	3.9	0.0
Aud	CHAPMAN/Gibson+	655,189	579,899	0	1,276,485*	51.3	45.4	0.0	3.2	75,290 R	5.9	0.0
AgIn	Alley/SPARKS+	590,350	656,382	0	1,278,174*	46.2	51.4	0.0	2.5	66,032 D	5.2	0.0
PSC1	Martin@/COOK*	581,168	674,888	0	1,292,695*	45.0	52.2	0.0	2.8	93,720 D	7.3	0.0
SCT1	SEE/Anderson	676,539	609,490	0	1,315,276*	51.4	46.3	0.0	2.2	67,049 R	5.1	0.0
CvA1	THOMPSON/Toles	727,156	543,141	0	1,270,297	57.2	42.8	0.0	0.0	184,015 R	14.5	0.0
CrA1	MCMILLAN/Funderburk	684,152	523,348	0	1,263,276*	54.2	41.4	0.0	4.4	160,804 R	12.7	0.0
CrA2	BASCHAB/Cauthen	653,849	591,399	0	1,245,248	52.5	47.5	0.0	0.0	62,450 R	5.0	0.0
2000												
Pres	BUSH+/Gore	941,173	692,611	0	1,665,573*	56.5	41.6	0.0	1.9	248,562 R	14.9	0.0
SCCJ	MOORE+/Yates	878,480	726,348	0	1,604,828	54.7	45.3	0.0	0.0	152,132 R	9.5	0.0
SCT1	STUART/Cook	824,895	742,946	0	1,567,841	52.6	47.4	0.0	0.0	81,949 R	5.2	0.0
SCT3	WOODALL/England	846,287	714,429	0	1,560,716	54.2	45.8	0.0	0.0	131,858 R	8.4	0.0
SCt4	HARWOOD/Laird	845,141	696,705	0	1,541,846	54.8	45.2	0.0	0.0	148,436 R	9.6	0.0
CvA1	PITTMAN/Monroe	771,416	757,247	0	1,528,663	50.5	49.5	0.0	0.0	14,169 R	0.9	0.0
CvA2	CRAWLEY/Steagall	779,758	735,650	0	1,515,408	51.5	48.5	0.0	0.0	44,108 R	2.9	0.0
CvA3	MURDOCK/Reese	863,131	676,390	0	1,539,521	56.1	43.9	0.0	0.0	186,741 R	12.1	0.0
CrA1	SHAW/Fry	767,710	746,552	0	1,514,262	50.7	49.3	0.0	0.0	21,158 R	1.4	0.0
CrA2	WISE/Ford	840,282	673,750	0	1,514,032	55.5	44.5	0.0	0.0	166,532 R	11.0	0.0
CrA3	Martin/COBB	746,785	783,962	0	1,530,747	48.8	51.2	0.0	0.0	37,177 D	2.4	0.0
1998												
LtG	WINDOM/Freeman+	652,465	644,818	0	1,297,283	50.3	49.7	0.0	0.0	7,647 R	0.6	0.0
AtG	PRYOR+/Butts	642,403	635,636	0	1,278,039	50.3	49.7	0.0	0.0	6,767 R	0.5	0.0
Sec	BENNETT@/Worley+	622,037	611,519	0	1,233,556	50.4	49.6	0.0	0.0	10,518 R	0.9	0.0
Aud	Duncan*/PARKER	556,090	655,186	0	1,211,276	45.9	54.1	0.0	0.0	99,096 D	8.2	0.0
AgIn	Thompson*/BISHOP	598,041	624,426	0	1,222,467	48.9	51.1	0.0	0.0	26,385 D	2.2	0.0
PSC2	WALLACE/Martin*	693,513	569,403	0	1,262,916	54.9	45.1	0.0	0.0	124,110 R	9.8	0.0
SCT1	BROWN/Monroe	626,825	618,265	0	1,245,090	50.3	49.7	0.0	0.0	8,560 R	0.7	0.0
SCT2	HOUSTON/Clarke	634,327	597,475	0	1,231,802	51.5	48.5	0.0	0.0	36,852 R	3.0	0.0
SCT3	Johnstone/MURDOCK	590,428	645,535	0	1,235,963	47.8	52.2	0.0	0.0	55,107 D	4.5	0.0
CvA1	Carlisle/YATES	556,338	655,408	0	1,211,746	45.9	54.1	0.0	0.0	99,070 D	8.2	0.0
1996												
Pres	DOLE+/Clinton/Perot	769,044	662,165	92,149	1,534,349*	50.1	43.2	6.0	0.7	106,879 R	7.0	0.0
Sen	SESSIONS/Bedford+	786,436	681,651	0	1,499,393*	52.5	45.5	0.0	2.1	104,785 R	7.0	0.0
PSCP	SULLIVAN@/Folsom*/Chappe	781,989	610,344	0	1,432,803*	54.6	42.6	0.0	2.8	171,645 R	12.0	0.0
SCT1	SEE/Ingram	776,298	693,826	0	1,470,124	52.8	47.2	0.0	0.0	82,472 R	5.6	0.0
CvA1	THOMPSON/Thigpen	726,205	670,674	0	1,396,879	52.0	48.0	0.0	0.0	55,531 R	4.0	0.0
CrA1	MCMILLAN/North	737,706	651,459	0	1,389,165	53.1	46.9	0.0	0.0	86,247 R	6.2	0.0
CrA2	BASCHAB/Copeland	722,317	662,487	0	1,384,804	52.2	47.8	0.0	0.0	59,830 R	4.3	0.0
CrA3	BROWN/Sorrells	702,357	673,607	0	1,375,964	51.0	49.0	0.0	0.0	28,750 R	2.1	0.0
1994												
Gov	JAMES+/Folsom	604,926	594,169	0	1,199,095	50.5	49.6	0.0	0.0	10,757 R	0.9	0.0
AtG	SESSIONS/Evans+	666,910	505,137	0	1,172,047	56.9	43.1	0.0	0.0	161,773 R	13.8	0.0
Sec	Gavin/BENNETT+	500,552	572,367	0	1,072,919	46.7	53.4	0.0	0.0	71,815 D	6.7	0.0
Trs	Martin/BAXLEY+	561,701	561,733	0	1,123,434	50.0	50.0	0.0	0.0	32 D	0.0	0.0
Aud	DUNCAN/Baker+	539,930	518,212	0	1,058,142	51.0	49.0	0.0	0.0	21,718 R	2.1	0.0
AgIn	THOMPSON/Todd*	566,529	541,850	0	1,108,379	51.1	48.9	0.0	0.0	24,679 R	2.2	0.0
PSC1	Helms/COOK*	537,277	557,752	0	1,095,029	49.1	50.9	0.0	0.0	20,475 D	1.9	0.0
SCCJ	HOOPER/Hornsby	562,428	562,166	0	1,124,594	50.0	50.0	0.0	0.0	262 R	0.0	0.0
SCT2	See/KENNEDY	548,124	554,711	0	1,102,835	49.7	50.3	0.0	0.0	6,587 D	0.6	0.0
SCT3	Montell/COOK	539,947	551,042	0	1,090,989	49.5	50.5	0.0	0.0	11,095 D	1.0	0.0
SCT4	Russell/BUTTS	509,044	587,312	0	1,096,356	46.4	53.6	0.0	0.0	78,268 D	7.1	0.0

1. Statewide Winner in UPPERCASE. Incumbency: * for incumbent, + for party holding seat.

2. BOLDING indicates unit won by REPUBLICANS. Plurality in UPPERCASE indicates unit won with a majority of the vote.

3. Total column may include votes for minor party candidates. An asterisk (*) follows the Total column if it includes votes not listed (see Rem%).

4. % of Marg(in) is Plurality as % of Total Vote. GOP Index (R-Dex) is the percentage (not percentage points) by which GOP% for County is above(+)/below(-) the State GOP%.

5. Order of races is standardized and may not match ballot order. Selected races only; non-competitive lower-ticket races may be omitted.

6. Each race is assigned a specific bar in the graphs. Top of the ticket is darkest bar and is at the left of each year cluster. Races not listed in the history table will result in blank bars.

Figure 1. TOTAL VOTES.

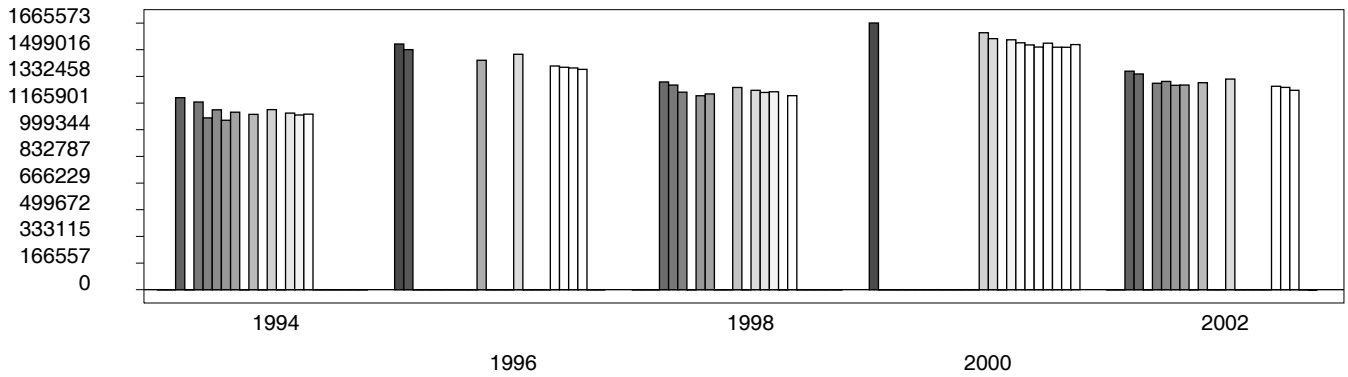


Figure 2. REPUBLICAN %. Refer to GOP-DEX for comparative value.

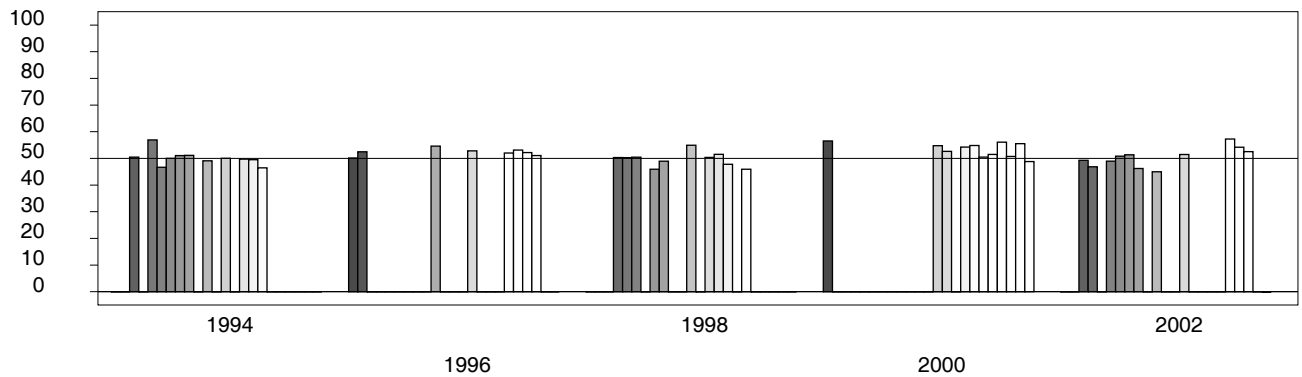


Figure 3. R-DEX: % by which County GOP% is above/below the State GOP%.



1. Statewide Winner in UPPERCASE. Incumbency: * for incumbent, + for party holding seat.

2. BOLDING indicates unit won by REPUBLICANS. Plurality in UPPERCASE indicates unit won with a majority of the vote.

3. Total column may include votes for minor party candidates. An asterisk (*) follows the Total column if it includes votes not listed (see Rem%).

4. % of Marg(in) is Plurality as % of Total Vote. GOP Index (R-Dex) is the percentage (not percentage points) by which GOP% for County is above(+)/below(-) the State GOP%.

5. Order of races is standardized and may not match ballot order. Selected races only; non-competitive lower-ticket races may be omitted.

6. Each race is assigned a specific bar in the graphs. Top of the ticket is darkest bar and is at the left of each year cluster. Races not listed in the history table will result in blank bars.