

Race	Candidate GOP/Dem/Ind	GOP Vote	Dem Vote	Ind Vote	Total Vote	GOP %	Dem %	Ind %	Rem %	Plurality/Win	%of Marg	GOP Index
<b>2000</b>												
Pres	BUSH+/Gore	941,173	692,611	0	1,665,573*	56.5	41.6	0.0	1.9	248,562 R	14.9	0.0
<b>1996</b>												
Pres	DOLE+/Clinton/Perot	769,044	662,165	92,149	1,534,349*	50.1	43.2	6.0	0.7	106,879 R	7.0	0.0
<b>1992</b>												
Pres	BUSH*/Clinton/Perot	804,283	690,080	183,109	1,687,337*	47.7	40.9	10.9	0.6	114,203 r	6.8	0.0
<b>1988</b>												
Pres	BUSH+/Dukakis	815,576	549,506	0	1,378,476*	59.2	39.9	0.0	1.0	266,070 R	19.3	0.0
<b>1984</b>												
Pres	REAGAN*/Mondale	872,849	551,899	0	1,441,713*	60.5	38.3	0.0	1.2	320,950 R	22.3	0.0
<b>1980</b>												
Pres	REAGAN/Carter*	654,192	636,730	16,481	1,341,929*	48.8	47.5	1.2	2.6	17,462 r	1.3	0.0
<b>1976</b>												
Pres	Ford+/CARTER	504,070	659,170	0	1,182,850*	42.6	55.7	0.0	1.7	155,100 D	13.1	0.0
<b>1972</b>												
Pres	NIXON/McGovern+	728,701	256,923	0	1,006,111*	72.4	25.5	0.0	2.0	471,778 R	46.9	0.0
<b>1968</b>												
Pres	Nixon/Humphrey+/WALLACE	146,923	196,579	691,425	1,049,922*	14.0	18.7	65.9	1.4	494,846 O	47.1	0.0
<b>1964</b>												
Pres	GOLDWATER/No Dem/Unpled	479,085	0	210,732	689,818*	69.5	0.0	30.6	0.0	268,353 R	38.9	0.0
<b>1960</b>												
Pres	Nixon/KENNEDY+	237,981	324,050	0	570,225*	41.7	56.8	0.0	1.4	86,069 D	15.1	0.0
<b>1956</b>												
Pres	Eisenhower/STEVENSON*	195,694	280,844	0	496,861*	39.4	56.5	0.0	4.1	85,150 D	17.1	0.0
<b>1952</b>												
Pres	Eisenhower/STEVENSON+	149,231	275,075	0	426,120*	35.0	64.6	0.0	0.4	125,844 D	29.5	0.0
<b>1948</b>												
Pres	Dewey/No Dem/THURMOND	40,930	0	171,443	214,980*	19.0	0.0	79.8	1.2	130,513 O	60.7	0.0
<b>1944</b>												
Pres	Dewey/ROOSEVELT*	44,540	198,918	0	244,743*	18.2	81.3	0.0	0.5	154,378 D	63.1	0.0
<b>1940</b>												
Pres	Willkie/ROOSEVELT*	42,184	250,726	0	294,219*	14.3	85.2	0.0	0.4	208,542 D	70.9	0.0
<b>1936</b>												
Pres	Landon/ROOSEVELT*	35,358	238,196	0	275,744*	12.8	86.4	0.0	0.8	202,838 D	73.6	0.0
<b>1932</b>												
Pres	Hoover/ROOSEVELT+	34,675	207,910	0	245,303*	14.1	84.8	0.0	1.1	173,235 D	70.6	0.0
<b>1928</b>												
Pres	Hoover/SMITH+	120,725	127,796	0	248,521	48.6	51.4	0.0	0.0	7,071 D	2.8	0.0
<b>1924</b>												
Pres	Coolidge/DAVIS+/LaFollet	42,823	113,138	8,602	164,563	26.0	68.8	5.2	0.0	70,315 D	42.7	0.0
<b>1920</b>												
Pres	Harding/COX+	74,719	156,064	0	233,951*	31.9	66.7	0.0	1.4	81,345 D	34.8	0.0

POLIDATA © Demographic and Political Guides. All Rights Reserved. Copyright © 2003. www.polidata.us

1. Statewide Winner in UPPERCASE. Incumbency: \* for incumbent, + for party holding seat.

2. BOLDING indicates unit won by REPUBLICANS. Plurality in UPPERCASE indicates unit won with a majority of the vote.

3. Total column may include votes for minor party candidates. An asterisk (\*) follows the Total column if it includes votes not listed (see Rem%).

4. % of Marg(in) is Plurality as % of Total Vote. GOP Index (R-Dex) is the percentage (not percentage points) by which GOP% for County is above(+)/below(-) the State GOP%.

5. Order of races is standardized and may not match ballot order. Selected races only; non-competitive lower-ticket races may be omitted.

6. Each race is assigned a specific bar in the graphs. Top of the ticket is darkest bar and is at the left of each year cluster. Races not listed in the history table will result in blank bars.

Figure 1. TOTAL VOTES.

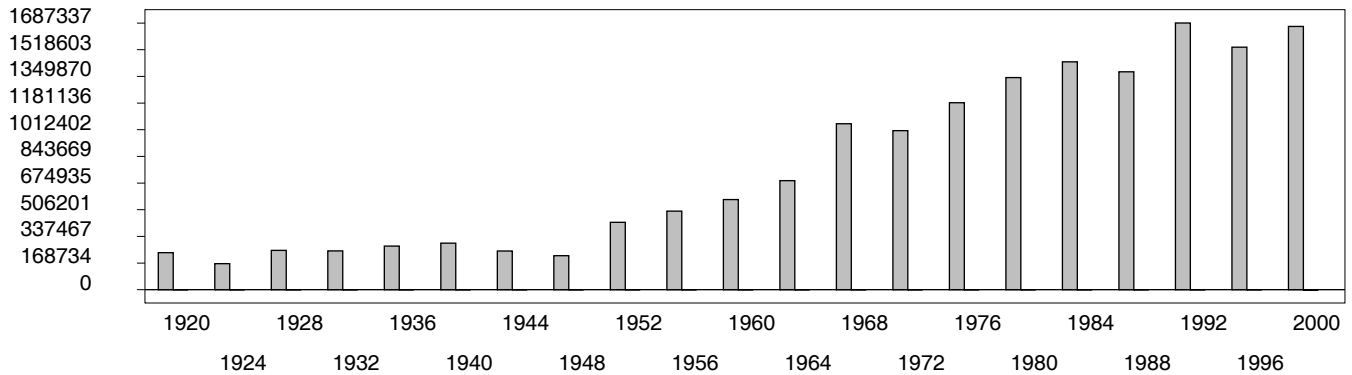


Figure 2. REPUBLICAN %. Refer to GOP-DEX for comparative value.

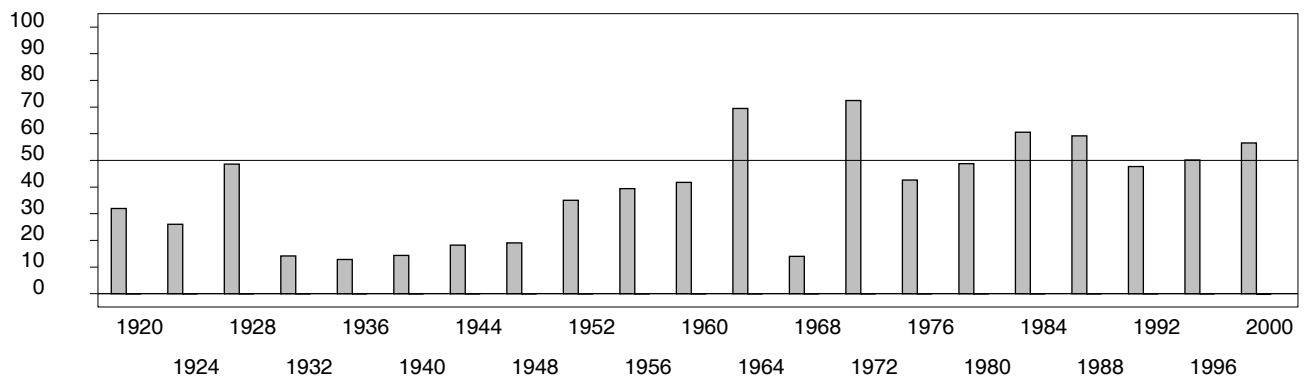


Figure 3. R-DEX: % by which County GOP% is above/below the State GOP%.

