

Race	Candidate GOP/Dem/Ind	GOP Vote	Dem Vote	Ind Vote	Total Vote	GOP %	Dem %	Ind %	Rem %	Plurality/Win	%of Marg	GOP Index
<b>2000</b>												
Pres	BUSH/Gore+	781,652	685,341	0	1,532,016*	51.0	44.7	0.0	4.2	96,311 R	6.3	0.0
<b>1996</b>												
Pres	Dole+/CLINTON/Perot	622,073	653,288	112,072	1,404,405*	44.3	46.5	8.0	1.2	31,215 d	2.2	0.0
<b>1992</b>												
Pres	BUSH*/Clinton/Perot	572,086	543,050	353,741	1,486,975*	38.5	36.5	23.8	1.2	29,036 r	2.0	0.0
<b>1988</b>												
Pres	BUSH+/Dukakis	702,541	454,029	0	1,169,921*	60.1	38.8	0.0	1.1	248,512 R	21.2	0.0
<b>1984</b>												
Pres	REAGAN*/Mondale	681,416	333,854	0	1,025,855*	66.4	32.5	0.0	1.0	347,562 R	33.9	0.0
<b>1980</b>												
Pres	REAGAN+/Carter/Anderson	529,688	246,843	76,952	873,945*	60.6	28.2	8.8	2.3	282,845 R	32.4	0.0
<b>1976</b>												
Pres	FORD+/Carter	418,642	295,602	0	742,719*	56.4	39.8	0.0	3.8	123,040 R	16.6	0.0
<b>1972</b>												
Pres	NIXON*/McGovern	402,812	198,540	0	622,926*	64.7	31.9	0.0	3.5	204,272 R	32.8	0.0
<b>1968</b>												
Pres	NIXON+/Humphrey/Wallace	266,721	170,514	46,573	486,936*	54.8	35.0	9.6	0.6	96,207 R	19.8	0.0
<b>1964</b>												
Pres	GOLDWATER+/Johnson	242,535	237,753	0	480,770*	50.5	49.5	0.0	0.1	4,782 R	1.0	0.0
<b>1960</b>												
Pres	NIXON+/Kennedy	221,241	176,781	0	398,491*	55.5	44.4	0.0	0.1	44,460 R	11.2	0.0
<b>1956</b>												
Pres	EISENHOWER*/Stevenson	176,990	112,880	0	290,173*	61.0	38.9	0.0	0.1	64,110 R	22.1	0.0
<b>1952</b>												
Pres	EISENHOWER/Stevenson+	152,042	108,528	0	260,570	58.4	41.7	0.0	0.0	43,514 R	16.7	0.0
<b>1948</b>												
Pres	Dewey/TRUMAN+	77,597	95,291	0	177,105*	43.8	53.8	0.0	2.4	17,694 D	10.0	0.0
<b>1944</b>												
Pres	Dewey/ROOSEVELT*	56,287	80,926	0	137,634*	40.9	58.8	0.0	0.3	24,639 D	17.9	0.0
<b>1940</b>												
Pres	Willkie/ROOSEVELT*	54,030	95,267	0	150,039*	36.0	63.5	0.0	0.5	41,237 D	27.5	0.0
<b>1936</b>												
Pres	Landon/ROOSEVELT*	33,433	86,722	0	124,163*	26.9	69.9	0.0	3.2	53,289 D	42.9	0.0
<b>1932</b>												
Pres	Hoover*/ROOSEVELT	36,104	79,264	0	118,251*	30.5	67.0	0.0	2.4	43,160 D	36.5	0.0
<b>1928</b>												
Pres	HOOVER+/Smith	52,533	38,537	0	91,070	57.7	42.3	0.0	0.0	13,996 R	15.4	0.0
<b>1924</b>												
Pres	COOLIDGE+/Davis/LaFollet	30,516	26,235	17,210	73,961	41.3	35.5	23.3	0.0	4,281 r	5.8	0.0
<b>1920</b>												
Pres	HARDING/Cox+	37,016	29,546	0	66,562	55.6	44.4	0.0	0.0	7,470 R	11.2	0.0

POLIDATA © Demographic and Political Guides. All Rights Reserved. Copyright © 2003. www.polidata.us

1. Statewide Winner in UPPERCASE. Incumbency: \* for incumbent, + for party holding seat.

2. BOLDING indicates unit won by REPUBLICANS. Plurality in UPPERCASE indicates unit won with a majority of the vote.

3. Total column may include votes for minor party candidates. An asterisk (\*) follows the Total column if it includes votes not listed (see Rem%).

4. % of Marg(in) is Plurality as % of Total Vote. GOP Index (R-Dex) is the percentage (not percentage points) by which GOP% for County is above(+)/below(-) the State GOP%.

5. Order of races is standardized and may not match ballot order. Selected races only; non-competitive lower-ticket races may be omitted.

6. Each race is assigned a specific bar in the graphs. Top of the ticket is darkest bar and is at the left of each year cluster. Races not listed in the history table will result in blank bars.

Figure 1. TOTAL VOTES.

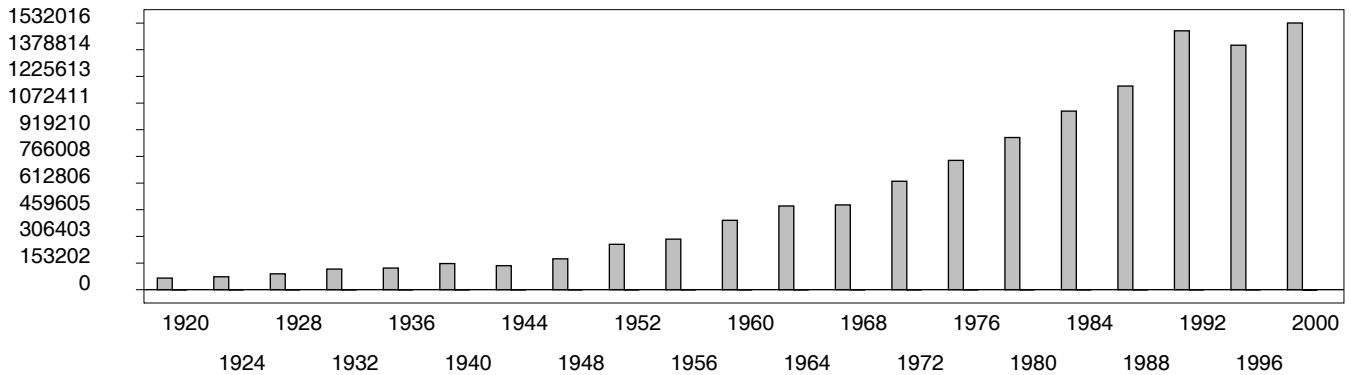


Figure 2. REPUBLICAN %. Refer to GOP-DEX for comparative value.

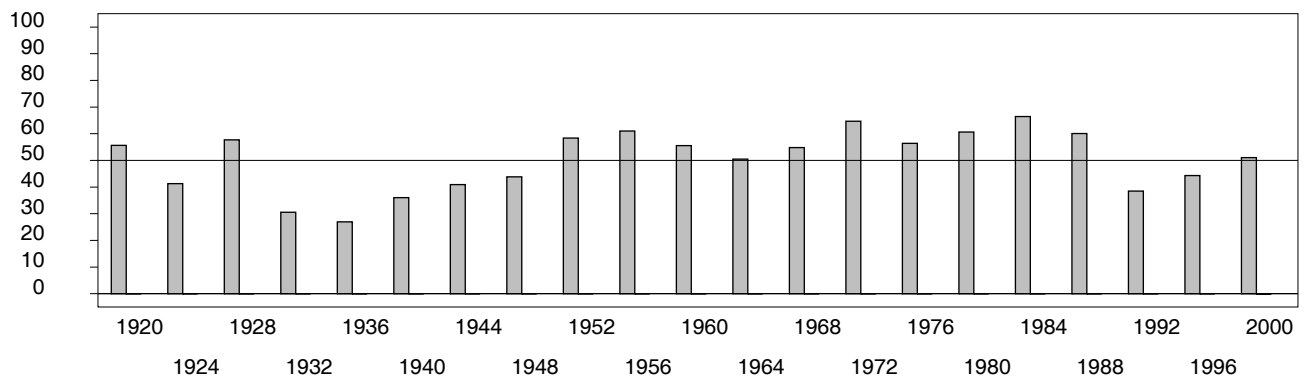


Figure 3. R-DEX: % by which County GOP% is above/below the State GOP%.



1. Statewide Winner in UPPERCASE. Incumbency: \* for incumbent, + for party holding seat.

2. BOLDING indicates unit won by REPUBLICANS. Plurality in UPPERCASE indicates unit won with a majority of the vote.

3. Total column may include votes for minor party candidates. An asterisk (\*) follows the Total column if it includes votes not listed (see Rem%).

4. % of Marg(in) is Plurality as % of Total Vote. GOP Index (R-Dex) is the percentage (not percentage points) by which GOP% for County is above(+)/below(-) the State GOP%.

5. Order of races is standardized and may not match ballot order. Selected races only; non-competitive lower-ticket races may be omitted.

6. Each race is assigned a specific bar in the graphs. Top of the ticket is darkest bar and is at the left of each year cluster. Races not listed in the history table will result in blank bars.