

Race	Candidate GOP/Dem/Ind	GOP Vote	Dem Vote	Ind Vote	Total Vote	GOP %	Dem %	Ind %	Rem %	Plurality/Win	%of Marg	GOP Index
2000												
Pres	BUSH/Gore+	472,940	422,768	0	921,781*	51.3	45.9	0.0	2.8	50,172 R	5.5	0.0
1996												
Pres	Dole/CLINTON*/Perot	325,416	475,171	69,884	884,262*	36.8	53.7	7.9	1.6	149,755 D	16.9	0.0
1992												
Pres	Bush*/CLINTON/Perot	337,324	505,823	99,132	950,653*	35.5	53.2	10.4	0.9	168,499 D	17.7	0.0
1988												
Pres	BUSH+/Dukakis	466,578	349,237	0	827,738*	56.4	42.2	0.0	1.4	117,341 R	14.2	0.0
1984												
Pres	REAGAN*/Mondale	534,774	338,646	0	884,406*	60.5	38.3	0.0	1.2	196,128 R	22.2	0.0
1980												
Pres	REAGAN/Carter*	403,164	398,041	22,468	837,582*	48.1	47.5	2.7	1.7	5,123 r	0.6	0.0
1976												
Pres	Ford+/CARTER	267,903	498,604	0	767,535*	34.9	65.0	0.0	0.1	230,701 D	30.1	0.0
1972												
Pres	NIXON/McGovern	448,541	199,892	0	651,320*	68.9	30.7	0.0	0.4	248,649 R	38.2	0.0
1968												
Pres	Nixon/Humphrey+/WALLACE	190,759	188,228	240,982	619,969	30.8	30.4	38.9	0.0	50,223 o	8.1	0.0
1964												
Pres	Goldwater/JOHNSON+	243,264	314,197	0	560,426*	43.4	56.1	0.0	0.5	70,933 D	12.7	0.0
1960												
Pres	Nixon/KENNEDY+/Faubus	184,508	215,049	28,952	428,509	43.1	50.2	6.8	0.0	30,541 D	7.1	0.0
1956												
Pres	Eisenhower/STEVENSON*	186,287	213,277	0	406,572*	45.8	52.5	0.0	1.7	26,990 D	6.6	0.0
1952												
Pres	Eisenhower/STEVENSON+	177,155	226,300	0	404,800*	43.8	55.9	0.0	0.3	49,145 D	12.1	0.0
1948												
Pres	Dewey/TRUMAN+/Thurmond e	50,959	149,659	41,857	242,475	21.0	61.7	17.3	0.0	98,700 D	40.7	0.0
1944												
Pres	Dewey/ROOSEVELT*	63,551	148,965	0	212,954*	29.8	70.0	0.0	0.2	85,414 D	40.1	0.0
1940												
Pres	Willkie/ROOSEVELT*	42,122	157,213	0	200,429*	21.0	78.4	0.0	0.6	115,091 D	57.4	0.0
1936												
Pres	Landon/ROOSEVELT*	32,049	146,765	0	179,431*	17.9	81.8	0.0	0.3	114,716 D	63.9	0.0
1932												
Pres	Hoover/ROOSEVELT+	27,465	186,829	0	216,569*	12.7	86.3	0.0	1.1	159,364 D	73.6	0.0
1928												
Pres	Hoover/SMITH+	77,784	119,196	0	197,726*	39.3	60.3	0.0	0.4	41,412 D	20.9	0.0
1924												
Pres	Coolidge/DAVIS+/LaFollet	40,583	84,790	13,167	138,540	29.3	61.2	9.5	0.0	44,207 D	31.9	0.0
1920												
Pres	Harding/COX+	72,316	106,427	0	183,871*	39.3	57.9	0.0	2.8	34,111 D	18.6	0.0

POLIDATA © Demographic and Political Guides. All Rights Reserved. Copyright © 2003. www.polidata.us

1. Statewide Winner in UPPERCASE. Incumbency: * for incumbent, + for party holding seat.

2. BOLDING indicates unit won by REPUBLICANS. Plurality in UPPERCASE indicates unit won with a majority of the vote.

3. Total column may include votes for minor party candidates. An asterisk (*) follows the Total column if it includes votes not listed (see Rem%).

4. % of Marg(in) is Plurality as % of Total Vote. GOP Index (R-Dex) is the percentage (not percentage points) by which GOP% for County is above(+)/below(-) the State GOP%.

5. Order of races is standardized and may not match ballot order. Selected races only; non-competitive lower-ticket races may be omitted.

6. Each race is assigned a specific bar in the graphs. Top of the ticket is darkest bar and is at the left of each year cluster. Races not listed in the history table will result in blank bars.

Figure 1. TOTAL VOTES.

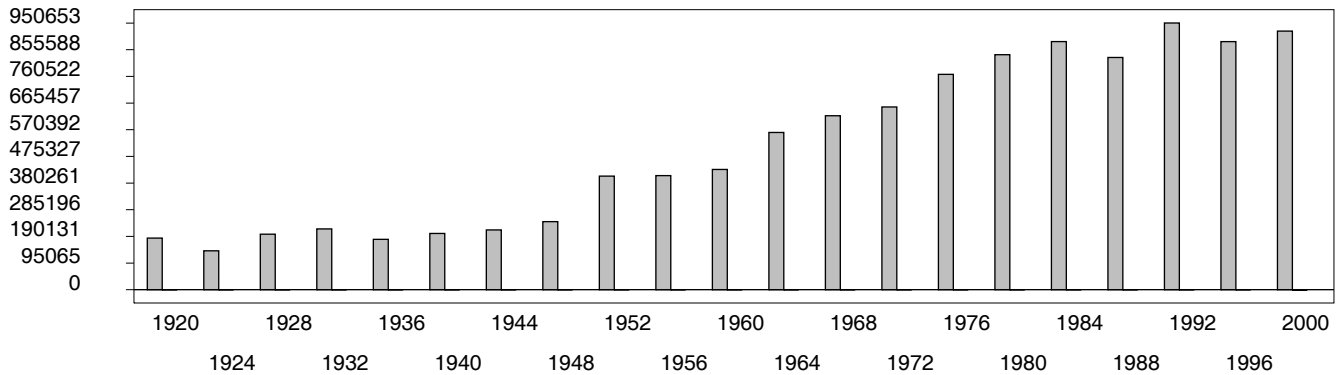


Figure 2. REPUBLICAN %. Refer to GOP-DEX for comparative value.

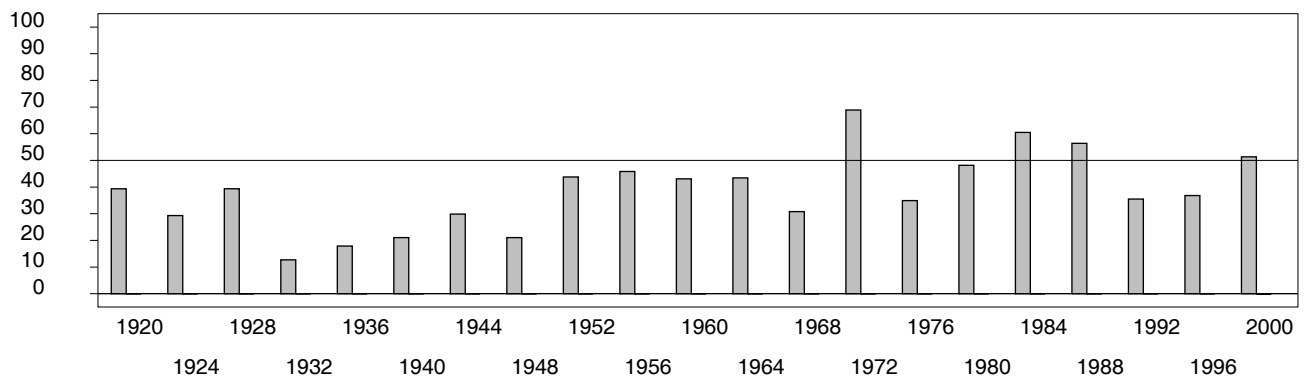


Figure 3. R-DEX: % by which County GOP% is above/below the State GOP%.

