

Race	Candidate GOP/Dem/Ind	GOP Vote	Dem Vote	Ind Vote	Total Vote	GOP %	Dem %	Ind %	Rem %	Plurality/Win	%of Marg	GOP Index	
<b>2002</b>													
Gov	Simon/DAVIS*/Camejo	3,169,801	3,533,490	393,036	7,473,980*	42.4	47.3	5.3	5.1	363,689	d	4.9	0.0
LtG	McPherson/BUSTAMANTE*	3,094,392	3,658,942	307,254	7,411,160*	41.8	49.4	4.2	4.7	564,550	d	7.6	0.0
Sec	Oberg+/SHELLEY	3,070,879	3,357,173	282,340	7,257,886*	42.3	46.3	3.9	7.5	286,294	d	4.0	0.0
Comp	McClintock/WESTLY+/Wells	3,273,028	3,289,839	419,873	7,258,758*	45.1	45.3	5.8	3.8	16,811	d	0.2	0.0
Trs	Conlon/ANGELIDES*	2,914,138	3,546,583	356,077	7,193,469*	40.5	49.3	5.0	5.2	632,445	d	8.8	0.0
AtG	Ackerman/LOCKYER*	2,920,752	3,716,282	283,173	7,241,717*	40.3	51.3	3.9	4.4	795,530	D	11.0	0.0
Ins	Mendoza+/GARAMENDI	2,998,243	3,346,937	277,667	7,200,429*	41.6	46.5	3.9	8.0	348,694	d	4.8	0.0
<b>2000</b>													
Pres	Bush/GORE+	4,567,429	5,861,203		010,965,822*	41.7	53.5	0.0	4.9	1,293,774	D	11.8	0.0
Sen	Campbell/FEINSTEIN*	3,886,853	5,932,522		010,623,608*	36.6	55.8	0.0	7.6	2,045,669	D	19.3	0.0
<b>1998</b>													
Sen	Fong/BOXER*	3,576,351	4,411,705		0 8,314,953*	43.0	53.1	0.0	3.9	835,354	D	10.1	0.0
Gov	Lungren+/DAVIS	3,218,030	4,860,702		0 8,385,175*	38.4	58.0	0.0	3.7	1,642,672	D	19.6	0.0
LtG	Leslie/BUSTAMANTE+	3,161,031	4,290,473		0 8,143,341*	38.8	52.7	0.0	8.5	1,129,442	D	13.9	0.0
Sec	JONES*/Alioto	<b>3,785,069</b>	<b>3,695,344</b>		<b>0 8,052,948*</b>	<b>47.0</b>	<b>45.9</b>	<b>0.0</b>	<b>7.1</b>	<b>89,725</b>	<b>r</b>	<b>1.1</b>	<b>0.0</b>
Comp	Barrales/CONNELL*	2,653,153	4,875,969		0 8,005,777*	33.1	60.9	0.0	6.0	2,222,816	D	27.8	0.0
Trs	Pringle+/ANGELIDES	3,159,898	4,166,206		0 7,920,411*	39.9	52.6	0.0	7.5	1,006,308	D	12.7	0.0
AtG	Stirling+/LOCKYER	3,389,709	4,119,139		0 7,997,734*	42.4	51.5	0.0	6.1	729,430	D	9.1	0.0
Ins	QUACKENBUSH*/Martinez	<b>4,006,762</b>	<b>3,519,453</b>		<b>0 8,036,037*</b>	<b>49.9</b>	<b>43.8</b>	<b>0.0</b>	<b>6.3</b>	<b>487,309</b>	<b>r</b>	<b>6.1</b>	<b>0.0</b>
<b>1996</b>													
Pres	Dole/CLINTON*/Perot	3,828,380	5,119,835		697,84710,018,615*	38.2	51.1	7.0	3.7	1,291,455	D	12.9	0.0
<b>1994</b>													
Sen	Huffington/FEINSTEIN*	3,817,025	3,979,152		0 8,513,916*	44.8	46.7	0.0	8.4	162,127	d	1.9	0.0
Gov	WILSON*/Brown	<b>4,781,766</b>	<b>3,519,799</b>		<b>0 8,665,156*</b>	<b>55.2</b>	<b>40.6</b>	<b>0.0</b>	<b>4.2</b>	<b>1,261,967</b>	<b>R</b>	<b>14.6</b>	<b>0.0</b>
LtG	Wright/DAVIS+	3,412,777	4,441,429		0 8,473,091*	40.3	52.4	0.0	7.3	1,028,652	D	12.1	0.0
Sec	JONES/Miller+	<b>3,727,894</b>	<b>3,690,841</b>		<b>0 8,234,198*</b>	<b>45.3</b>	<b>44.8</b>	<b>0.0</b>	<b>9.9</b>	<b>37,053</b>	<b>r</b>	<b>0.5</b>	<b>0.0</b>
Comp	McClintock/CONNELL+	3,796,387	3,983,053		0 8,243,010*	46.1	48.3	0.0	5.6	186,666	d	2.3	0.0
Trs	FONG/Angelides+	<b>3,970,308</b>	<b>3,488,891</b>		<b>0 8,193,737*</b>	<b>48.5</b>	<b>42.6</b>	<b>0.0</b>	<b>9.0</b>	<b>481,417</b>	<b>r</b>	<b>5.9</b>	<b>0.0</b>
AtG	LUNGREN*/Umborg	<b>4,438,733</b>	<b>3,256,070</b>		<b>0 8,240,597*</b>	<b>53.9</b>	<b>39.5</b>	<b>0.0</b>	<b>6.6</b>	<b>1,182,663</b>	<b>R</b>	<b>14.4</b>	<b>0.0</b>
Ins	QUACKENBUSH/Torres+	<b>4,015,858</b>	<b>3,567,996</b>		<b>0 8,225,487*</b>	<b>48.8</b>	<b>43.4</b>	<b>0.0</b>	<b>7.8</b>	<b>447,862</b>	<b>r</b>	<b>5.4</b>	<b>0.0</b>
<b>1992</b>													
Pres	Bush*/CLINTON/Perot	3,630,574	5,121,325		2,296,00611,131,721*	32.6	46.0	20.6	0.8	1,490,751	d	13.4	0.0
Sen	Herschsohn/BOXER+	4,644,182	5,173,467		010,799,436*	43.0	47.9	0.0	9.1	529,285	d	4.9	0.0
SenS	Seymour+/FEINSTEIN	4,093,501	5,853,651		010,782,621*	38.0	54.3	0.0	7.8	1,760,150	D	16.3	0.0
<b>1990</b>													
Gov	WILSON+/Feinstein	<b>3,791,904</b>	<b>3,525,197</b>		<b>0 7,699,232*</b>	<b>49.3</b>	<b>45.8</b>	<b>0.0</b>	<b>5.0</b>	<b>266,707</b>	<b>r</b>	<b>3.5</b>	<b>0.0</b>
LtG	Bergeson/MCCARTHY*	3,186,508	3,874,308		0 7,554,300*	42.2	51.3	0.0	6.5	687,800	D	9.1	0.0
Sec	Flores/EU*	3,032,755	3,864,151		0 7,475,483*	40.6	51.7	0.0	7.7	831,396	D	11.1	0.0
Comp	Fong/DAVIS*	2,700,696	4,153,534		0 7,401,227*	36.5	56.1	0.0	7.4	1,452,838	D	19.6	0.0
Trs	Hayes/BROWN+	3,347,614	3,579,389		0 7,352,742*	45.5	48.7	0.0	5.8	231,775	d	3.2	0.0
AtG	LUNGREN/Smith+	<b>3,407,927</b>	<b>3,379,021</b>		<b>0 7,286,197*</b>	<b>46.8</b>	<b>46.4</b>	<b>0.0</b>	<b>6.9</b>	<b>28,906</b>	<b>r</b>	<b>0.4</b>	<b>0.0</b>
Ins	Bannister/GARAMENDI/Brow	2,736,577	3,770,717		431,317 7,219,887*	37.9	52.2	6.0	3.9	1,034,140	D	14.3	0.0
<b>1988</b>													
Pres	BUSH+/Dukakis	<b>5,054,917</b>	<b>4,702,233</b>		<b>0 9,887,065*</b>	<b>51.1</b>	<b>47.6</b>	<b>0.0</b>	<b>1.3</b>	<b>352,684</b>	<b>R</b>	<b>3.6</b>	<b>0.0</b>
Sen	WILSON*/McCarthy	<b>5,143,400</b>	<b>4,287,241</b>		<b>0 9,743,529*</b>	<b>52.8</b>	<b>44.0</b>	<b>0.0</b>	<b>3.2</b>	<b>856,159</b>	<b>R</b>	<b>8.8</b>	<b>0.0</b>
<b>1986</b>													
Sen	Zschau/CRANSTON*	3,541,804	3,646,672		0 7,398,522*	47.9	49.3	0.0	2.8	104,868	d	1.4	0.0
Gov	DEUKMEJIAN*/Bradley	<b>4,506,601</b>	<b>2,781,714</b>		<b>0 7,443,485*</b>	<b>60.5</b>	<b>37.4</b>	<b>0.0</b>	<b>2.1</b>	<b>1,724,887</b>	<b>R</b>	<b>23.2</b>	<b>0.0</b>
LtG	Curb/MCCARTHY*	3,118,758	3,957,831		0 7,338,124*	42.5	53.9	0.0	3.6	839,073	D	11.4	0.0
Comp	Campbell/DAVIS+	3,149,359	3,673,432		0 7,135,161*	44.1	51.5	0.0	4.4	524,073	D	7.3	0.0
<b>1984</b>													
Pres	REAGAN*/Mondale	<b>5,467,009</b>	<b>3,922,519</b>		<b>0 9,505,423*</b>	<b>57.5</b>	<b>41.3</b>	<b>0.0</b>	<b>1.2</b>	<b>1,544,490</b>	<b>R</b>	<b>16.2</b>	<b>0.0</b>

POLIDATA © Demographic and Political Guides. All Rights Reserved. Copyright © 2003. www.polidata.us

1. Winner in UPPERCASE. Incumbency: \* for incumbent, + for party holding seat.

2. BOLDING indicates unit won by REPUBLICANS. Plurality in UPPERCASE indicates party which won unit won with a majority of the vote.

3. Total column may include votes for minor party candidates. An asterisk (\*) follows the Total column if it includes votes not listed (see Rem%).

4. % of Marg(in) is Plurality as % of Total Vote. GOP Index (R-Dex) is the percentage (not percentage points) by which GOP% for County is above(+)/below(-) the State GOP%.

5. Order of races is standardized and may not match ballot order. Selected races only; non-competitive lower-ticket races may be omitted.

6. Each race is assigned a specific bar in the graphs. Top of the ticket is darkest bar and is at the left of each year cluster. Races not listed in the history table will result in blank bars.

Figure 1. TOTAL VOTES.

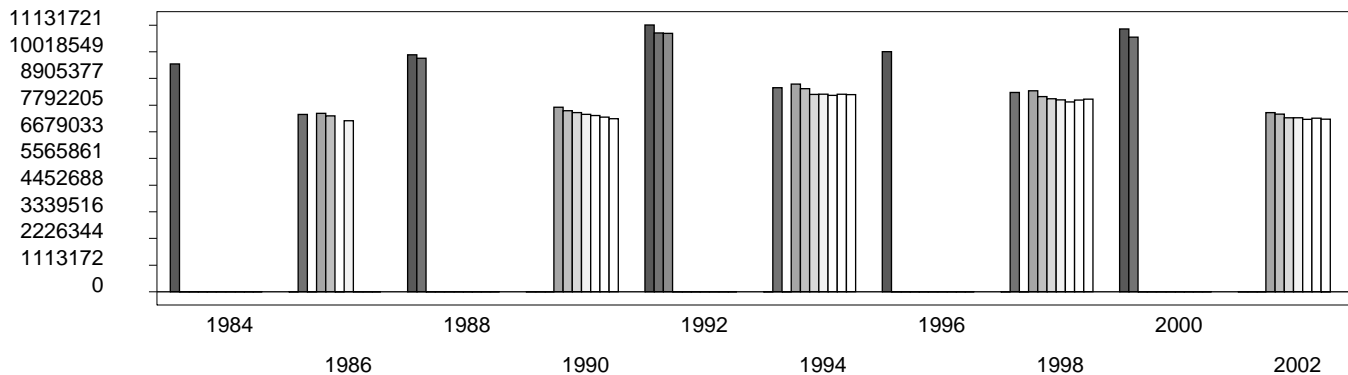


Figure 2. REPUBLICAN %. Refer to GOP-DEX for comparative value.

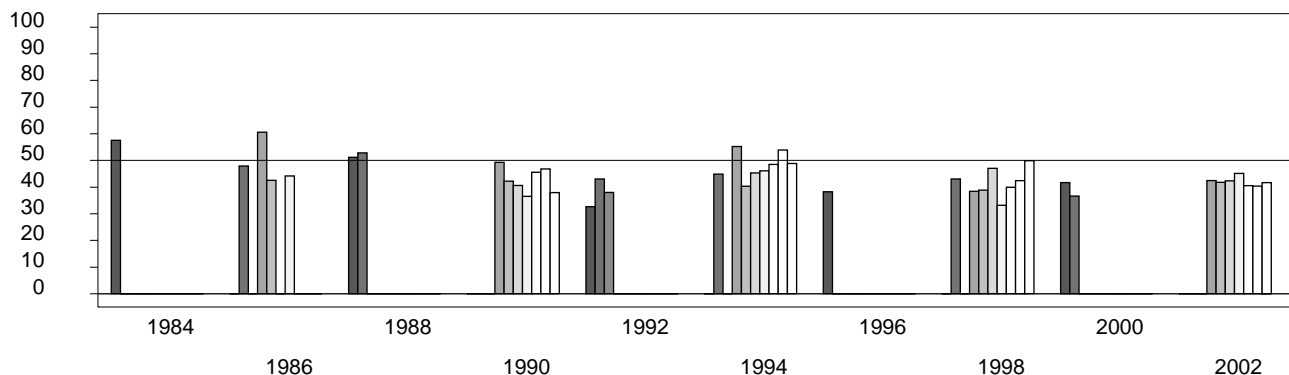


Figure 3. R-DEX: % by which County GOP% is above/below the State GOP%.

