

Race	Candidate GOP/Dem/Ind	GOP Vote	Dem Vote	Ind Vote	Total Vote	GOP %	Dem %	Ind %	Rem %	Plurality/Win	%of Marg	GOP Index	
2000													
Pres	Bush/GORE+	4,567,429	5,861,203		010,965,822*	41.7	53.5	0.0	4.9	1,293,774	D	11.8	0.0
1996													
Pres	Dole/CLINTON*/Perot	3,828,380	5,119,835		697,84710,018,615*	38.2	51.1	7.0	3.7	1,291,455	D	12.9	0.0
1992													
Pres	Bush*/CLINTON/Perot	3,630,574	5,121,325		2,296,00611,131,721*	32.6	46.0	20.6	0.8	1,490,751	d	13.4	0.0
1988													
Pres	BUSH+/Dukakis	5,054,917	4,702,233		0 9,887,065*	51.1	47.6	0.0	1.3	352,684	R	3.6	0.0
1984													
Pres	REAGAN*/Mondale	5,467,009	3,922,519		0 9,505,423*	57.5	41.3	0.0	1.2	1,544,490	R	16.2	0.0
1980													
Pres	REAGAN+/Carter/Anderson	4,524,858	3,083,661		739,833 8,587,063*	52.7	35.9	8.6	2.8	1,441,197	R	16.8	0.0
1976													
Pres	FORD+/Carter	3,882,244	3,742,284		0 7,867,117*	49.4	47.6	0.0	3.1	139,960	r	1.8	0.0
1972													
Pres	NIXON*/McGovern	4,602,096	3,475,847		0 8,367,862*	55.0	41.5	0.0	3.5	1,126,249	R	13.5	0.0
1968													
Pres	NIXON/Humphrey+/Wallace	3,467,664	3,244,318		487,270 7,251,587*	47.8	44.7	6.7	0.7	223,346	r	3.1	0.0
1964													
Pres	Goldwater+/JOHNSON	2,879,108	4,171,877		0 7,057,586*	40.8	59.1	0.0	0.0	1,292,769	D	18.3	0.0
1960													
Pres	NIXON+/Kennedy	3,259,722	3,224,099		0 6,506,578*	50.1	49.6	0.0	0.4	35,623	R	0.6	0.0
1956													
Pres	EISENHOWER*/Stevenson	3,027,668	2,420,135		0 5,466,355*	55.4	44.3	0.0	0.3	607,533	R	11.1	0.0
1952													
Pres	EISENHOWER/Stevenson+	2,897,310	2,197,548		0 5,141,849*	56.4	42.7	0.0	0.9	699,762	R	13.6	0.0
1948													
Pres	Dewey/TRUMAN+	1,895,269	1,913,134		0 4,021,538*	47.1	47.6	0.0	5.3	17,865	d	0.4	0.0
1944													
Pres	Dewey/ROOSEVELT*	1,512,965	1,988,564		0 3,520,875*	43.0	56.5	0.0	0.6	475,599	D	13.5	0.0
1940													
Pres	Willkie/ROOSEVELT*	1,351,419	1,877,618		0 3,268,791*	41.3	57.4	0.0	1.2	526,199	D	16.1	0.0
1936													
Pres	Landon/ROOSEVELT*	836,431	1,766,836		0 2,638,882*	31.7	67.0	0.0	1.4	930,405	D	35.3	0.0
1932													
Pres	Hoover*/ROOSEVELT	847,902	1,324,157		0 2,266,972*	37.4	58.4	0.0	4.2	476,255	D	21.0	0.0
1928													
Pres	HOOVER+/Smith	1,162,323	614,365		0 1,796,656*	64.7	34.2	0.0	1.1	547,958	R	30.5	0.0
1924													
Pres	COOLIDGE+/Davis/LaFollet	733,250	105,514		424,649 1,281,778*	57.2	8.2	33.1	1.4	308,601	R	24.1	0.0
1920													
Pres	HARDING/Cox+	624,992	229,191		0 943,463*	66.2	24.3	0.0	9.5	395,801	R	42.0	0.0

POLIDATA © Demographic and Political Guides. All Rights Reserved. Copyright © 2003. www.polidata.us

1. Winner in UPPERCASE. Incumbency: * for incumbent, + for party holding seat.

2. BOLDING indicates unit won by REPUBLICANS. Plurality in UPPERCASE indicates party which won unit won with a majority of the vote.

3. Total column may include votes for minor party candidates. An asterisk (*) follows the Total column if it includes votes not listed (see Rem%).

4. % of Marg(in) is Plurality as % of Total Vote. GOP Index (R-Dex) is the percentage (not percentage points) by which GOP% for County is above(+)/below(-) the State GOP%.

5. Order of races is standardized and may not match ballot order. Selected races only; non-competitive lower-ticket races may be omitted.

6. Each race is assigned a specific bar in the graphs. Top of the ticket is darkest bar and is at the left of each year cluster. Races not listed in the history table will result in blank bars.

Figure 1. TOTAL VOTES.

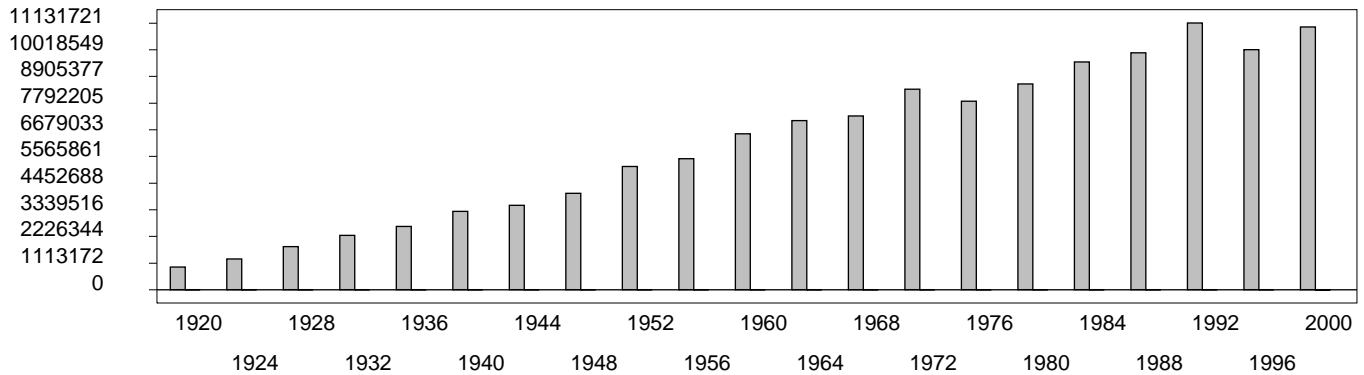


Figure 2. REPUBLICAN %. Refer to GOP-DEX for comparative value.

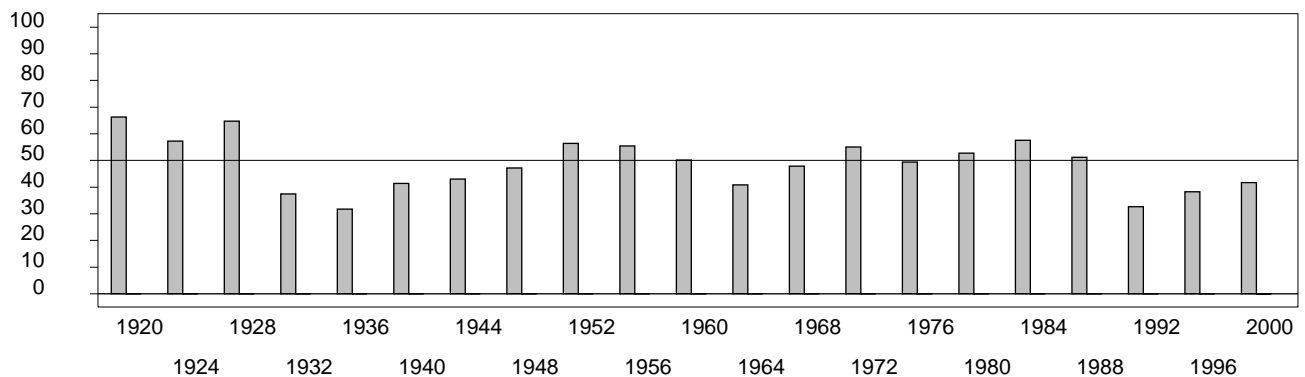


Figure 3. R-DEX: % by which County GOP% is above/below the State GOP%.



1. Winner in UPPERCASE. Incumbency: * for incumbent, + for party holding seat.
2. BOLDING indicates unit won by REPUBLICANS. Plurality in UPPERCASE indicates party which won unit won with a majority of the vote.
3. Total column may include votes for minor party candidates. An asterisk (*) follows the Total column if it includes votes not listed (see Rem%).
4. % of Marg(in) is Plurality as % of Total Vote. GOP Index (R-Dex) is the percentage (not percentage points) by which GOP% for County is above(+)/below(-) the State GOP%.
5. Order of races is standardized and may not match ballot order. Selected races only; non-competitive lower-ticket races may be omitted.
6. Each race is assigned a specific bar in the graphs. Top of the ticket is darkest bar and is at the left of each year cluster. Races not listed in the history table will result in blank bars.

[06000VHB-psvhcy21-CC01]