

Race	Candidate GOP/Dem/Ind	GOP Vote	Dem Vote	Ind Vote	Total Vote	GOP %	Dem %	Ind %	Rem %	Plurality/Win	%of Marg	GOP Index
<b>2002</b>												
Sen	ALLARD*/Strickland	717,893	648,130	0	1,415,486*	50.7	45.8	0.0	3.5	69,763 R	4.9	0.0
Gov	OWENS*/Heath	884,583	475,373	0	1,412,602*	62.6	33.7	0.0	3.7	409,210 R	29.0	0.0
Sec	DAVIDSON*/Martinez	789,004	513,085	0	1,356,561*	58.2	37.8	0.0	4.0	275,919 R	20.3	0.0
Trs	COFFMAN*/Phillips	758,946	512,401	0	1,351,815*	56.1	37.9	0.0	6.0	246,545 R	18.2	0.0
AtG	Allbright/SALAZAR*	522,281	803,200	0	1,386,805*	37.7	57.9	0.0	4.4	280,919 D	20.3	0.0
<b>2000</b>												
Pres	BUSH+/Gore	883,748	738,227	0	1,740,232*	50.8	42.4	0.0	6.8	145,521 R	8.4	0.0
Sec	DAVIDSON+/Martinez	893,891	609,366	0	1,611,417*	55.5	37.8	0.0	6.7	284,525 R	17.7	0.0
BdEd	Martin/NAIMAN	767,471	767,561	0	1,586,352*	48.4	48.4	0.0	3.2	90 d	0.0	0.0
UCR	NO GOP/No Dem	805,562	588,501	0	1,437,093*	56.1	41.0	0.0	3.0	217,061 R	15.1	0.0
<b>1998</b>												
Sen	CAMPBELL/Lamm+	826,966	463,435	0	1,323,426*	62.5	35.0	0.0	2.5	363,531 R	27.5	0.0
Gov	OWENS/Schoettler+	645,806	637,655	0	1,316,577*	49.1	48.4	0.0	2.5	8,151 r	0.6	0.0
Sec	BUCKLEY*/Bainter	612,859	562,409	0	1,248,307*	49.1	45.1	0.0	5.9	50,450 r	4.1	0.0
Trs	COFFMAN+/Polisfut	636,421	559,990	0	1,253,247*	50.8	44.7	0.0	4.5	76,431 R	6.1	0.0
AtG	Suthers+/SALAZAR	601,362	634,712	0	1,268,830*	47.4	50.0	0.0	2.6	33,350 D	2.6	0.0
UCR	MARTIN/Naiman	639,538	437,870	0	1,167,931*	54.8	37.5	0.0	7.8	201,668 R	17.3	0.0
<b>1996</b>												
Pres	DOLE/Clinton*/Perot	691,848	671,152	99,629	1,510,704*	45.8	44.4	6.6	3.2	20,696 r	1.4	0.0
Sen	ALLARD*/Strickland	750,325	677,600	0	1,469,545*	51.1	46.1	0.0	2.8	72,725 R	5.0	0.0
UCR	JOHNSON/Beer	749,955	543,140	0	1,293,095	58.0	42.0	0.0	0.0	206,815 R	16.0	0.0
<b>1994</b>												
Gov	Benson/ROMER*	432,042	619,205	0	1,116,184*	38.7	55.5	0.0	5.8	187,163 D	16.8	0.0
Sec	BUCKLEY+/Wolff/Campbell	622,281	393,980	0	1,084,671*	57.4	36.3	0.0	6.3	228,301 R	21.1	0.0
Trs	OWENS/Greenwood+	626,054	430,999	0	1,057,053	59.2	40.8	0.0	0.0	195,055 R	18.5	0.0
AtG	NORTON*/Freese	686,816	415,126	0	1,101,942	62.3	37.7	0.0	0.0	271,690 R	24.7	0.0
BdEd	EVANS/Newcomb	589,925	416,950	0	1,006,875	58.6	41.4	0.0	0.0	172,975 R	17.2	0.0
UCR	STEINHAUER/Munoz/Richard	509,106	350,136	0	987,904*	51.5	35.4	0.0	13.0	158,970 R	16.1	0.0
<b>1992</b>												
Pres	Bush*/CLINTON/Perot	562,850	629,681	366,010	1,569,180*	35.9	40.1	23.3	0.7	66,831 d	4.3	0.0
Sen	Considine*/CAMPBELL+	662,893	803,725	0	1,552,266*	42.7	51.8	0.0	5.5	140,832 D	9.1	0.0
UCR	MARTIN/Pinchuk	685,027	669,882	0	1,354,909	50.6	49.4	0.0	0.0	15,145 R	1.1	0.0
<b>1990</b>												
Sen	BROWN+/Heath	569,048	425,746	0	1,022,027*	55.7	41.7	0.0	2.7	143,302 R	14.0	0.0
Gov	Andrews/ROMER*	358,403	626,032	0	1,011,272*	35.4	61.9	0.0	2.7	267,629 D	26.5	0.0
Sec	MEYER*/Harber	618,666	345,245	0	985,571*	62.8	35.0	0.0	2.2	273,421 R	27.7	0.0
Trs	Sargent*/SCHOETTTLER*	441,792	534,877	0	995,237*	44.4	53.7	0.0	1.9	93,085 D	9.4	0.0
AtG	NORTON+/Woodard@	532,373	458,665	0	991,038	53.7	46.3	0.0	0.0	73,708 R	7.4	0.0
UCR	DIETZE/Kelley	440,289	418,705	0	902,782*	48.8	46.4	0.0	4.9	21,584 r	2.4	0.0
<b>1988</b>												
Pres	BUSH+/Dukakis	728,177	621,453	0	1,372,394*	53.1	45.3	0.0	1.7	106,724 R	7.8	0.0
BdEd	DOWNING/Ricotta	647,572	564,951	0	1,238,954*	52.3	45.6	0.0	2.1	82,621 R	6.7	0.0
UCR	ARNOLD/Dino	715,808	492,186	0	1,232,040*	58.1	40.0	0.0	2.0	223,622 R	18.2	0.0
<b>1986</b>												
Sen	Kramer/WIRTH+	512,993	529,450	0	1,060,685*	48.4	49.9	0.0	1.7	16,457 d	1.6	0.0
Gov	Strickland/ROMER+	434,418	616,325	0	1,058,926*	41.0	58.2	0.0	0.8	181,907 D	17.2	0.0
Sec	MEYER*/McClure	617,689	383,460	0	1,013,352*	61.0	37.8	0.0	1.2	234,229 R	23.1	0.0
Trs	Sargent*/SCHOETTTLER+	481,176	523,579	0	1,014,761*	47.4	51.6	0.0	1.0	42,403 D	4.2	0.0
AtG	WOODARD*/Bastien	598,262	396,511	0	994,773	60.1	39.9	0.0	0.0	201,751 R	20.3	0.0
BdEd	DOWNING/Urschel	494,124	440,596	0	952,361*	51.9	46.3	0.0	1.9	53,528 R	5.6	0.0
UCR	CALDWELL/Bramble	510,434	416,262	0	943,674*	54.1	44.1	0.0	1.8	94,172 R	10.0	0.0
<b>1984</b>												
Pres	REAGAN*/Mondale	821,817	454,975	0	1,295,380*	63.4	35.1	0.0	1.4	366,842 R	28.3	0.0
Sen	ARMSTRONG*/Dick	833,821	449,327	0	1,297,809*	64.3	34.6	0.0	1.1	384,494 R	29.6	0.0
UCR	DIETZE/Sgarlatti	674,379	441,360	0	1,141,657*	59.1	38.7	0.0	2.3	233,019 R	20.4	0.0

POLIDATA © Demographic and Political Guides. All Rights Reserved. Copyright © 2003. www.polidata.us

1. Statewide Winner in UPPERCASE. Incumbency: \* for incumbent, + for party holding seat. CO: Lieutenant Governor is elected on same ticket with Governor.

2. BOLDING indicates unit won by REPUBLICANS. Plurality in UPPERCASE indicates unit won with a majority of the vote.

3. Total column may include votes for minor party candidates. An asterisk (\*) follows the Total column if it includes votes not listed (see Rem%).

4. % of Marg(in) is Plurality as % of Total Vote. GOP Index (R-Dex) is the percentage (not percentage points) by which GOP% for County is above(+)/below(-) the State GOP%.

5. Order of races is standardized and may not match ballot order. Selected races only; non-competitive lower-ticket races may be omitted.

6. Each race is assigned a specific bar in the graphs. Top of the ticket is darkest bar and is at the left of each year cluster. Races not listed in the history table will result in blank bars.

Figure 1. TOTAL VOTES.

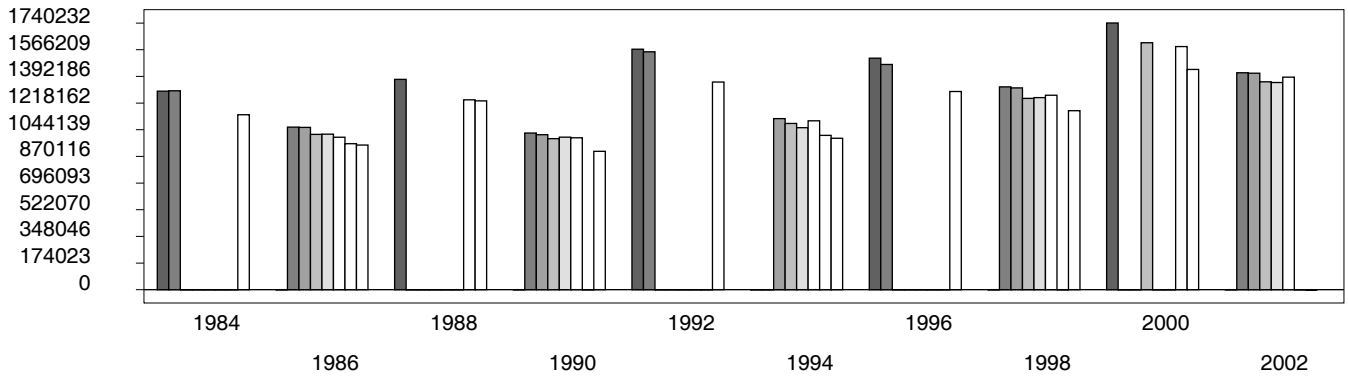


Figure 2. REPUBLICAN %. Refer to GOP-DEX for comparative value.

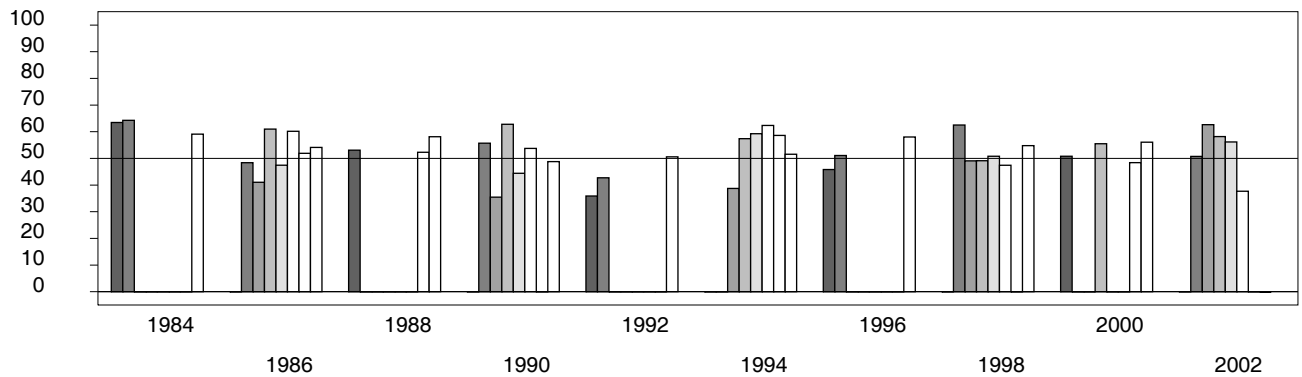
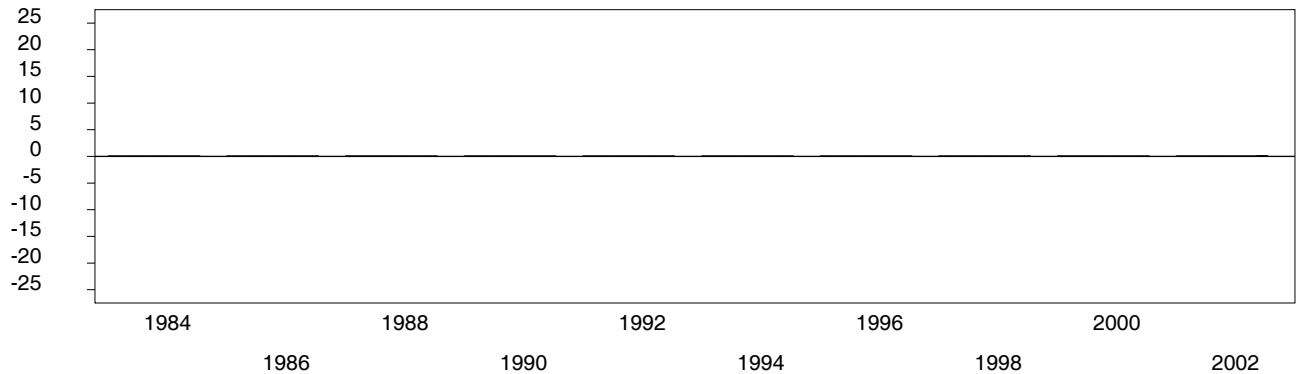


Figure 3. R-DEX: % by which County GOP% is above/below the State GOP%.



1. Statewide Winner in UPPERCASE. Incumbency: \* for incumbent, + for party holding seat. CO: Lieutenant Governor is elected on same ticket with Governor.
2. BOLDING indicates unit won by REPUBLICANS. Plurality in UPPERCASE indicates unit won with a majority of the vote.
3. Total column may include votes for minor party candidates. An asterisk (\*) follows the Total column if it includes votes not listed (see Rem%).
4. % of Marg(in) is Plurality as % of Total Vote. GOP Index (R-Dex) is the percentage (not percentage points) by which GOP% for County is above(+)/below(-) the State GOP%.
5. Order of races is standardized and may not match ballot order. Selected races only; non-competitive lower-ticket races may be omitted.
6. Each race is assigned a specific bar in the graphs. Top of the ticket is darkest bar and is at the left of each year cluster. Races not listed in the history table will result in blank bars.

[08000VHA-psvhcy21-DC18]