

Race	Candidate GOP/Dem/Ind	GOP Vote	Dem Vote	Ind Vote	Total Vote	GOP %	Dem %	Ind %	Rem %	Plurality/Win	%of Marg	GOP Index
2002												
Gov	ROWLAND*/Curry	573,958	448,984	0	1,022,942	56.1	43.9	0.0	0.0	124,974 R	12.2	0.0
Sec	San Angelo/BYSIEWICZ*	326,774	611,468	0	952,164*	34.3	64.2	0.0	1.5	284,694 D	29.9	0.0
Trs	Garber/NAPPIER*	389,304	527,216	0	942,363*	41.3	56.0	0.0	2.7	137,912 D	14.6	0.0
Comp	Mullins/WYMAN*	338,613	577,851	0	929,115*	36.4	62.2	0.0	1.4	239,238 D	25.8	0.0
AtG	Dean/BLUMENTHAL*	330,874	632,351	0	963,225	34.4	65.7	0.0	0.0	301,477 D	31.3	0.0
2000												
Pres	Bush/GORE+	561,094	816,015	0	1,459,471*	38.5	55.9	0.0	5.6	254,921 D	17.5	0.0
Sen	Giordano/LIEBERMAN*	448,077	828,902	0	1,311,261*	34.2	63.2	0.0	2.6	380,825 D	29.0	0.0
1998												
Sen	Franks/DODD*	312,177	628,306	0	964,457*	32.4	65.2	0.0	2.5	316,129 D	32.8	0.0
Gov	ROWLAND*/Kennelly	628,707	354,187	0	999,535*	62.9	35.4	0.0	1.7	274,520 R	27.5	0.0
Sec	Andrews/BYSIEWICZ+	358,060	531,644	0	899,624*	39.8	59.1	0.0	1.1	173,584 D	19.3	0.0
Trs	Silvester+/NAPPIER	433,889	436,573	0	890,888*	48.7	49.0	0.0	2.3	2,684 d	0.3	0.0
Comp	Scalzo/WYMAN*	373,337	501,266	0	883,810*	42.2	56.7	0.0	1.0	127,929 D	14.5	0.0
1996												
Pres	Dole/CLINTON*/Perot	483,109	735,740	139,523	1,392,609*	34.7	52.8	10.0	2.5	252,631 D	18.1	0.0
1994												
Gov	ROWLAND/Curry/Scott	415,201	375,133	216,585	1,147,054*	36.2	32.7	18.9	12.2	40,068 r	3.5	0.0
Sec	Scott+/RAPPAPORT	491,758	493,995	0	985,753	49.9	50.1	0.0	0.0	2,237 D	0.2	0.0
Trs	BURNHAM/Suggs+	526,200	441,263	0	991,670*	53.1	44.5	0.0	2.4	84,937 R	8.6	0.0
Comp	Gavin/WYMAN+	439,473	529,709	0	969,182	45.3	54.7	0.0	0.0	90,236 D	9.3	0.0
AtG	Arnold/BLUMENTHAL*	344,627	679,313	0	1,023,940	33.7	66.3	0.0	0.0	334,686 D	32.7	0.0
1992												
Pres	Bush*/CLINTON/Perot	578,313	682,318	348,771	1,616,156*	35.8	42.2	21.6	0.4	104,005 d	6.4	0.0
Sen	Johnson/DODD*	572,036	882,569	0	1,500,661*	38.1	58.8	0.0	3.1	310,533 D	20.7	0.0
1990												
Gov	Rowland/Morrison+/WEICKE	427,840	236,641	460,576	1,141,101*	37.5	20.7	40.4	1.4	32,736 o	2.9	0.0
Sec	KEZER/Tashjian*	490,153	446,253	0	936,406	52.3	47.7	0.0	0.0	43,900 R	4.7	0.0
Trs	Kemler/BORGES*	452,858	483,569	0	951,480*	47.6	50.8	0.0	1.6	30,711 D	3.2	0.0
Comp	Schiavone/CURRY+	470,206	489,352	0	959,558	49.0	51.0	0.0	0.0	19,146 D	2.0	0.0
AtG	Brennan/BLUMENTHAL+	395,289	572,972	0	968,261	40.8	59.2	0.0	0.0	177,683 D	18.4	0.0
1988												
Pres	BUSH+/Dukakis	750,241	676,584	0	1,443,387*	52.0	46.9	0.0	1.2	73,657 R	5.1	0.0
Sen	Weicker*/LIEBERMAN	678,454	688,499	0	1,383,516*	49.0	49.8	0.0	1.2	10,045 d	0.7	0.0
1986												
Sen	Eddy/DODD*	340,438	632,695	0	976,933*	34.9	64.8	0.0	0.4	292,257 D	29.9	0.0
Gov	Belaga/O' NEILL*	408,489	575,638	0	993,692*	41.1	57.9	0.0	1.0	167,149 D	16.8	0.0
Sec	Kezer/TASHJIAN*	403,059	524,659	0	932,564*	43.2	56.3	0.0	0.5	121,600 D	13.0	0.0
Trs	Garafalo/BORGES+	407,956	511,252	0	929,127*	43.9	55.0	0.0	1.1	103,296 D	11.1	0.0
Comp	Franks/CALDWELL*	418,590	507,662	0	931,309*	45.0	54.5	0.0	0.5	89,072 D	9.6	0.0
AtG	Arnold/LIEBERMAN*	335,209	613,742	0	948,951	35.3	64.7	0.0	0.0	278,533 D	29.4	0.0
1984												
Pres	REAGAN*/Mondale	890,877	569,597	0	1,466,674*	60.7	38.8	0.0	0.4	321,280 R	21.9	0.0
1982												
Sen	WEICKER*/Moffett	545,987	499,146	0	1,083,508*	50.4	46.1	0.0	3.5	46,841 R	4.3	0.0
Gov	Rome/O' NEILL+	497,773	578,264	0	1,083,876*	45.9	53.4	0.0	0.7	80,491 D	7.4	0.0
Sec	Wermer/TASHJIAN+	463,255	555,699	0	1,032,385*	44.9	53.8	0.0	1.3	92,444 D	9.0	0.0
Trs	Becker/PARKER*	450,674	564,677	0	1,031,288*	43.7	54.8	0.0	1.6	114,003 D	11.1	0.0
Comp	Hutchinson/CALDWELL*	470,435	543,836	0	1,026,680*	45.8	53.0	0.0	1.2	73,401 D	7.2	0.0
AtG	Champlin/LIEBERMAN+	424,961	601,711	0	1,035,023*	41.1	58.1	0.0	0.8	176,750 D	17.1	0.0

POLIDATA © Demographic and Political Guides. All Rights Reserved. Copyright © 2003. www.polidata.us

1. Statewide Winner in UPPERCASE. Incumbency: * for incumbent, + for party holding seat. CT: Lieutenant Governor is elected on same ticket with Governor.

2. BOLDING indicates unit won by REPUBLICANS. Plurality in UPPERCASE indicates unit won with a majority of the vote.

3. Total column may include votes for minor party candidates. An asterisk (*) follows the Total column if it includes votes not listed (see Rem%).

4. % of Marg(in) is Plurality as % of Total Vote. GOP Index (R-Dex) is the percentage (not percentage points) by which GOP% for County is above(+)/below(-) the State GOP%.

5. Order of races is standardized and may not match ballot order. Selected races only; non-competitive lower-ticket races may be omitted.

6. Each race is assigned a specific bar in the graphs. Top of the ticket is darkest bar and is at the left of each year cluster. Races not listed in the history table will result in blank bars.

Figure 1. TOTAL VOTES.

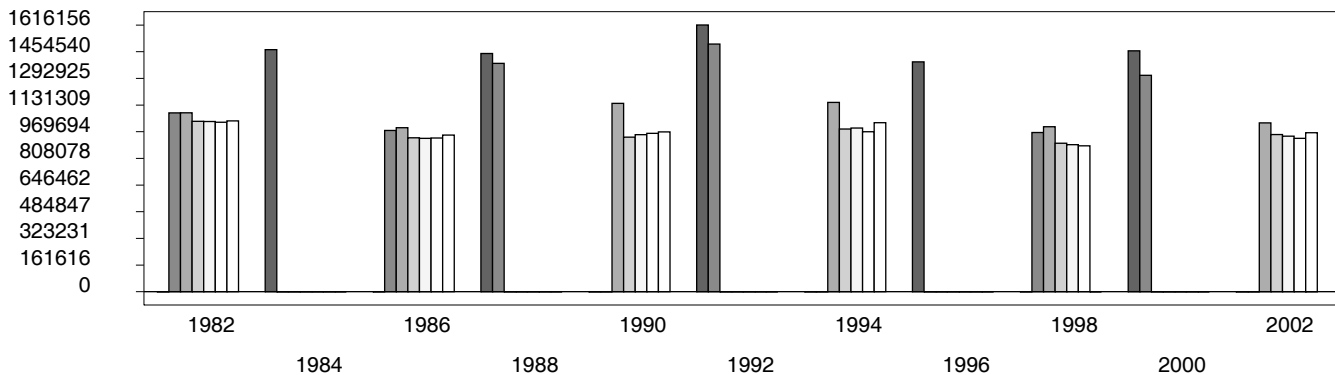


Figure 2. REPUBLICAN %. Refer to GOP-DEX for comparative value.

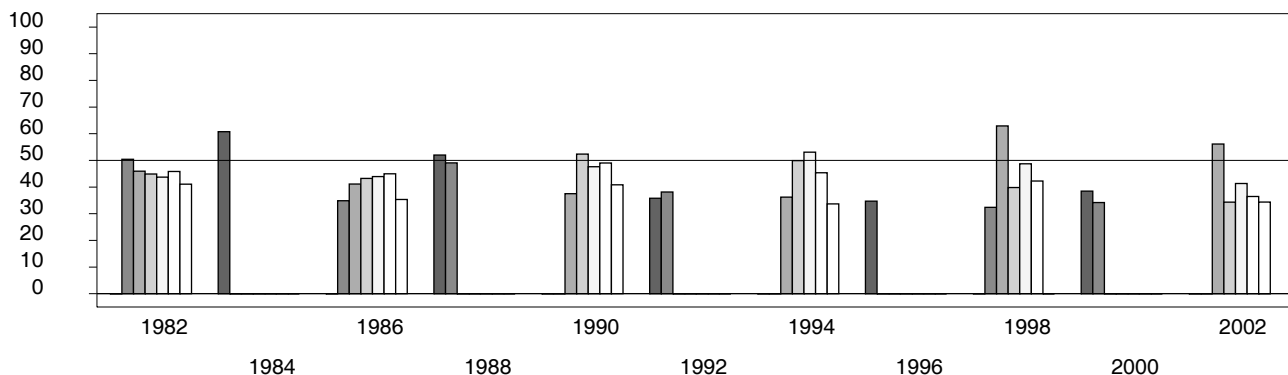


Figure 3. R-DEX: % by which County GOP% is above/below the State GOP%.

