

Race	Candidate GOP/Dem/Ind	GOP Vote	Dem Vote	Ind Vote	Total Vote	GOP %	Dem %	Ind %	Rem %	Plurality/Win	%of Marg	GOP Index
<b>2000</b>												
Pres	BUSH/Gore+	2,912,790	2,912,253	0	5,960,082*	48.9	48.9	0.0	2.3	537 r	0.0	0.0
<b>1996</b>												
Pres	Dole+/CLINTON/Perot	2,244,536	2,546,870	483,870	5,303,794*	42.3	48.0	9.1	0.5	302,334 d	5.7	0.0
<b>1992</b>												
Pres	BUSH*/Clinton/Perot	2,173,310	2,072,698	1,053,067	5,314,392*	40.9	39.0	19.8	0.3	100,612 r	1.9	0.0
<b>1988</b>												
Pres	BUSH+/Dukakis	2,618,885	1,656,701	0	4,302,313*	60.9	38.5	0.0	0.6	962,184 R	22.4	0.0
<b>1984</b>												
Pres	REAGAN/Mondale	2,730,350	1,448,816	0	4,180,051*	65.3	34.7	0.0	0.0	1,281,534 R	30.7	0.0
<b>1980</b>												
Pres	REAGAN/Carter/Anderson	2,046,951	1,419,475	189,692	3,686,930*	55.5	38.5	5.1	0.8	627,476 R	17.0	0.0
<b>1976</b>												
Pres	Ford+/CARTER	1,469,531	1,636,000	0	3,150,499*	46.6	51.9	0.0	1.4	166,469 D	5.3	0.0
<b>1972</b>												
Pres	NIXON*/McGovern	1,857,759	718,117	0	2,575,876	72.1	27.9	0.0	0.0	1,139,642 R	44.2	0.0
<b>1968</b>												
Pres	NIXON/Humphrey+/Wallace	886,804	676,794	624,207	2,187,805	40.5	30.9	28.5	0.0	210,010 r	9.6	0.0
<b>1964</b>												
Pres	Goldwater+/JOHNSON	905,941	948,540	0	1,854,481	48.9	51.2	0.0	0.0	42,599 D	2.3	0.0
<b>1960</b>												
Pres	NIXON+/Kennedy	795,476	748,700	0	1,544,176	51.5	48.5	0.0	0.0	46,776 R	3.0	0.0
<b>1956</b>												
Pres	EISENHOWER*/Stevenson	643,849	480,371	0	1,124,220	57.3	42.7	0.0	0.0	163,478 R	14.5	0.0
<b>1952</b>												
Pres	EISENHOWER/Stevenson+	544,036	444,950	0	988,986	55.0	45.0	0.0	0.0	99,086 R	10.0	0.0
<b>1948</b>												
Pres	Dewey/TRUMAN+	194,280	281,988	89,755	577,643*	33.6	48.8	15.5	2.0	87,708 d	15.2	0.0
<b>1944</b>												
Pres	Dewey/ROOSEVELT*	143,215	339,377	0	482,592	29.7	70.3	0.0	0.0	196,162 D	40.6	0.0
<b>1940</b>												
Pres	Willkie/ROOSEVELT*	126,158	359,334	0	485,492	26.0	74.0	0.0	0.0	233,176 D	48.0	0.0
<b>1936</b>												
Pres	Landon/ROOSEVELT*	78,248	249,117	0	327,365	23.9	76.1	0.0	0.0	170,869 D	52.2	0.0
<b>1932</b>												
Pres	Hoover*/ROOSEVELT	69,170	206,307	0	276,252*	25.0	74.7	0.0	0.3	137,137 D	49.6	0.0
<b>1928</b>												
Pres	HOOVER/Smith+	145,860	101,764	0	252,068*	57.9	40.4	0.0	1.8	44,096 R	17.5	0.0
<b>1924</b>												
Pres	Coolidge/DAVIS+/LaFollet	30,633	62,083	16,442	109,158	28.1	56.9	15.1	0.0	31,450 D	28.8	0.0
<b>1920</b>												
Pres	Harding/COX+	44,853	90,515	0	145,684*	30.8	62.1	0.0	7.1	45,662 D	31.3	0.0

POLIDATA © Demographic and Political Guides. All Rights Reserved. Copyright © 2003. www.polidata.us

1. Statewide Winner in UPPERCASE. Incumbency: \* for incumbent, + for party holding seat. FL: Lieutenant Governor is elected on same ticket with Governor.

2. BOLDING indicates unit won by REPUBLICANS. Plurality in UPPERCASE indicates unit won with a majority of the vote.

3. Total column may include votes for minor party candidates. An asterisk (\*) follows the Total column if it includes votes not listed (see Rem%).

4. % of Marg(in) is Plurality as % of Total Vote. GOP Index (R-Dex) is the percentage (not percentage points) by which GOP% for County is above(+)/below(-) the State GOP%.

5. Order of races is standardized and may not match ballot order. Selected races only; non-competitive lower-ticket races may be omitted.

6. Each race is assigned a specific bar in the graphs. Top of the ticket is darkest bar and is at the left of each year cluster. Races not listed in the history table will result in blank bars.

Figure 1. TOTAL VOTES.

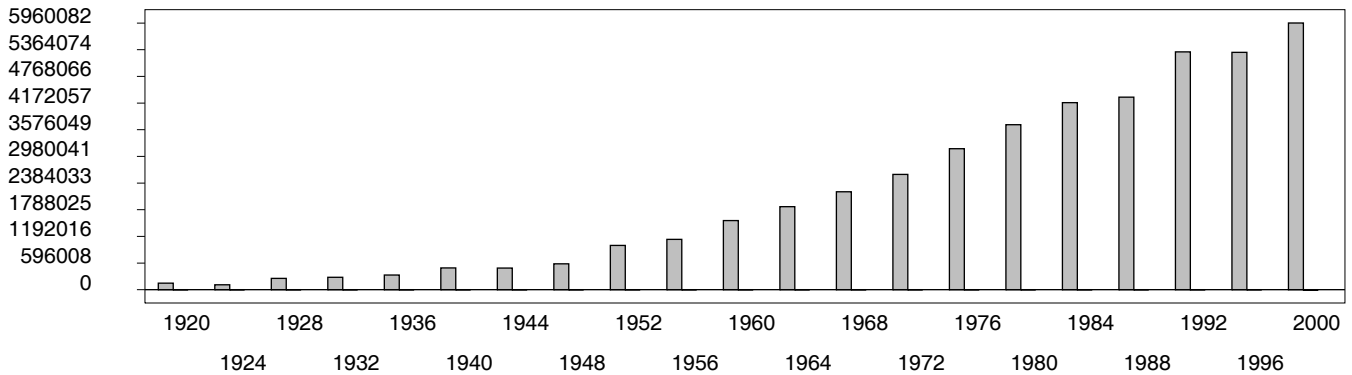


Figure 2. REPUBLICAN %. Refer to GOP-DEX for comparative value.

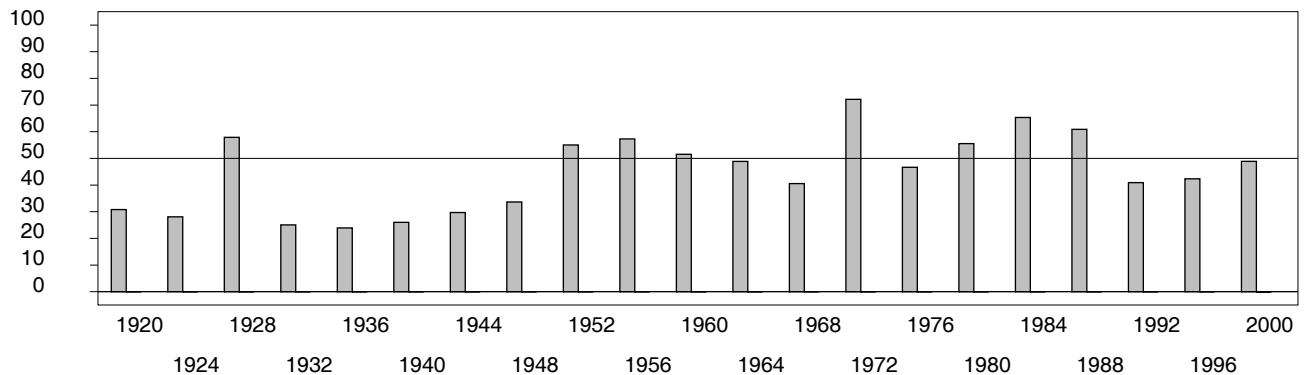


Figure 3. R-DEX: % by which County GOP% is above/below the State GOP%.



1. Statewide Winner in UPPERCASE. Incumbency: \* for incumbent, + for party holding seat. FL: Lieutenant Governor is elected on same ticket with Governor.
2. BOLDING indicates unit won by REPUBLICANS. Plurality in UPPERCASE indicates unit won with a majority of the vote.
3. Total column may include votes for minor party candidates. An asterisk (\*) follows the Total column if it includes votes not listed (see Rem%).
4. % of Marg(in) is Plurality as % of Total Vote. GOP Index (R-Dex) is the percentage (not percentage points) by which GOP% for County is above(+)/below(-) the State GOP%.
5. Order of races is standardized and may not match ballot order. Selected races only; non-competitive lower-ticket races may be omitted.
6. Each race is assigned a specific bar in the graphs. Top of the ticket is darkest bar and is at the left of each year cluster. Races not listed in the history table will result in blank bars.

[12000VHB-psvhcy21-CK19]