

Race	Candidate GOP/Dem/Ind	GOP Vote	Dem Vote	Ind Vote	Total Vote	GOP %	Dem %	Ind %	Rem %	Plurality/Win	%of Marg	GOP Index
2002												
Sen	CHAMBLISS/Cleland*	1,071,153	931,857	0	2,029,991*	52.8	45.9	0.0	1.3	139,296 R	6.9	0.0
Gov	PERDUE/Barnes*	1,041,677	937,062	0	2,025,861*	51.4	46.3	0.0	2.3	104,615 R	5.2	0.0
LtG	Stancil/TAYLOR*	914,286	1,041,227	0	2,006,728*	45.6	51.9	0.0	2.6	126,941 D	6.3	0.0
Sec	Bailey/COX*	717,337	1,225,232	0	2,004,840*	35.8	61.1	0.0	3.1	507,895 D	25.3	0.0
AtG	Goessling/BAKER*	874,996	1,093,734	0	1,968,730	44.4	55.6	0.0	0.0	218,738 D	11.1	0.0
Agrc	Strickland/IRVIN*	776,524	1,138,705	0	1,983,914*	39.1	57.4	0.0	3.5	362,181 D	18.3	0.0
Educ	COX+/Christmas	1,085,690	859,653	0	2,001,406*	54.3	43.0	0.0	2.8	226,037 R	11.3	0.0
Labr	McGee/THURMOND*	895,836	1,007,468	0	1,969,172*	45.5	51.2	0.0	3.3	111,632 D	5.7	0.0
PSC1	EVERETT+/Sizemore	1,007,479	913,119	0	1,920,598	52.5	47.5	0.0	0.0	94,360 R	4.9	0.0
PSC2	SPEIR/McDonald+/Harris	918,837	911,669	104,290	1,934,796	47.5	47.1	5.4	0.0	7,168 r	0.4	0.0
2000												
Pres	BUSH+/Gore	1,419,720	1,116,230	0	2,583,208*	55.0	43.2	0.0	1.8	303,490 R	11.8	0.0
SenS	Mattingly+/MILLER	920,478	1,413,224	0	2,428,242*	37.9	58.2	0.0	3.9	492,746 D	20.3	0.0
PSC1	Bartell/BURGESS/Withingt	961,627	1,201,346	133,904	2,296,877	41.9	52.3	5.8	0.0	239,719 D	10.4	0.0
PSC2	WISE/Boyd/Parker	1,197,415	928,005	135,888	2,261,308	53.0	41.0	6.0	0.0	269,410 R	11.9	0.0
1998												
Sen	COVERDELL*/Coles	918,540	791,904	0	1,753,911*	52.4	45.2	0.0	2.5	126,636 R	7.2	0.0
Gov	Millner/BARNES+	790,201	941,076	0	1,792,808*	44.1	52.5	0.0	3.4	150,875 D	8.4	0.0
LtG	Skandalakis/TAYLOR+	676,358	990,454	0	1,757,691*	38.5	56.4	0.0	5.2	314,096 D	17.9	0.0
Sec	McCallum/COX+	703,941	983,905	0	1,738,127*	40.5	56.6	0.0	2.9	279,964 D	16.1	0.0
AtG	Ralston+/BAKER	786,669	883,932	0	1,737,086*	45.3	50.9	0.0	3.8	97,263 D	5.6	0.0
Agrc	Greer/IRVIN*	585,664	1,085,694	0	1,728,679*	33.9	62.8	0.0	3.3	500,030 D	28.9	0.0
Ins	OXENDINE*/Canty	1,017,602	651,891	0	1,728,663*	58.9	37.7	0.0	3.4	365,711 R	21.2	0.0
Educ	SCHRENKO*/Martin	857,321	794,324	0	1,728,446*	49.6	46.0	0.0	4.4	62,997 r	3.6	0.0
Labr	Collins/THURMOND+	802,246	894,656	0	1,696,902	47.3	52.7	0.0	0.0	92,410 D	5.4	0.0
PSC1	BAKER/Hargis	927,696	746,081	0	1,673,777	55.4	44.6	0.0	0.0	181,615 R	10.9	0.0
1996												
Pres	DOLE/Clinton*/Perot	1,080,843	1,053,849	146,337	2,299,071*	47.0	45.8	6.4	0.8	26,994 r	1.2	0.0
Sen	Millner/CLELAND+	1,073,969	1,103,993	0	2,259,224*	47.5	48.9	0.0	3.6	30,024 d	1.3	0.0
Sec	Shafer/MASSEY+	919,725	1,143,466	0	2,127,004*	43.2	53.8	0.0	3.0	223,741 D	10.5	0.0
PSC1	Collins/BARBER	938,246	1,048,947	0	2,069,068*	45.4	50.7	0.0	4.0	110,701 D	5.4	0.0
PSC2	DURDEN/Ryles	1,038,655	962,726	0	2,067,390*	50.2	46.6	0.0	3.2	75,929 R	3.7	0.0
1994												
Gov	Millner/MILLER*	756,371	788,926	0	1,545,297	49.0	51.1	0.0	0.0	32,555 D	2.1	0.0
LtG	Schaefer/HOWARD*	632,491	808,664	0	1,488,749*	42.5	54.3	0.0	3.2	176,173 D	11.8	0.0
Ins	OXENDINE/Ryles*	754,123	725,134	0	1,479,257	51.0	49.0	0.0	0.0	28,989 R	2.0	0.0
Educ	SCHRENKO/Rogers*	731,644	709,568	0	1,441,212	50.8	49.2	0.0	0.0	22,076 R	1.5	0.0
Labr	Robinson/POYTHRESS*	669,577	782,111	0	1,451,688	46.1	53.9	0.0	0.0	112,534 D	7.8	0.0
PSC1	BAKER/Sizemore	753,950	587,237	0	1,399,946*	53.9	42.0	0.0	4.2	166,713 R	11.9	0.0
PSC2	WISE/Rowan*	705,317	692,740	0	1,398,057	50.5	49.6	0.0	0.0	12,577 R	0.9	0.0
1992												
Pres	Bush*/CLINTON/Perot	995,252	1,008,966	309,657	2,321,125*	42.9	43.5	13.3	0.3	13,714 d	0.6	0.0
Sen	Coverdell/FOWLER*	1,073,282	1,108,416	0	2,251,576*	47.7	49.2	0.0	3.1	35,134 d	1.6	0.0
Labr	Flaherty/POYTHRESS+	919,061	1,040,679	0	2,041,742*	45.0	51.0	0.0	4.0	121,618 D	6.0	0.0
PSC1	BAKER/Collins	989,002	974,679	0	2,048,458*	48.3	47.6	0.0	4.1	14,323 r	0.7	0.0
1990												
Gov	Isakson/MILLER+	645,625	766,662	0	1,449,652*	44.5	52.9	0.0	2.6	121,037 D	8.4	0.0
LtG	Towery/HOWARD+	474,057	864,849	0	1,379,293*	34.4	62.7	0.0	2.9	390,792 D	28.3	0.0
Agrc	Young/IRVIN*	490,435	837,653	0	1,328,088	36.9	63.1	0.0	0.0	347,218 D	26.1	0.0
Ins	Lovett/RYLES+	676,486	712,736	0	1,389,222	48.7	51.3	0.0	0.0	36,250 D	2.6	0.0
PSC1	West/BARBER	495,997	783,836	0	1,279,833	38.8	61.3	0.0	0.0	287,839 D	22.5	0.0
1988												
Pres	BUSH+/Dukakis	1,081,331	714,792	0	1,809,672*	59.8	39.5	0.0	0.8	366,539 R	20.3	0.0
PSC1	Collins/PAFFORD	652,431	886,093	0	1,595,727*	40.9	55.5	0.0	3.6	233,662 D	14.6	0.0
PSC2	Brittingham/ROWAN	666,025	854,919	0	1,573,662*	42.3	54.3	0.0	3.4	188,894 D	12.0	0.0

POLIDATA © Demographic and Political Guides. All Rights Reserved. Copyright © 2003. www.polidata.us

1. Winner in UPPERCASE. Incumbency: * for incumbent, + for party holding seat.
2. BOLDING indicates unit won by REPUBLICANS. Plurality in UPPERCASE indicates party which won unit won with a majority of the vote.
3. Total column may include votes for minor party candidates. An asterisk (*) follows the Total column if it includes votes not listed (see Rem%).
4. % of Marg(in) is Plurality as % of Total Vote. GOP Index (R-Dex) is the percentage (not percentage points) by which GOP% for County is above(+)/below(-) the State GOP%.
5. Order of races is standardized and may not match ballot order. Selected races only; non-competitive lower-ticket races may be omitted.
6. Each race is assigned a specific bar in the graphs. Top of the ticket is darkest bar and is at the left of each year cluster. Races not listed in the history table will result in blank bars.

Figure 1. TOTAL VOTES.

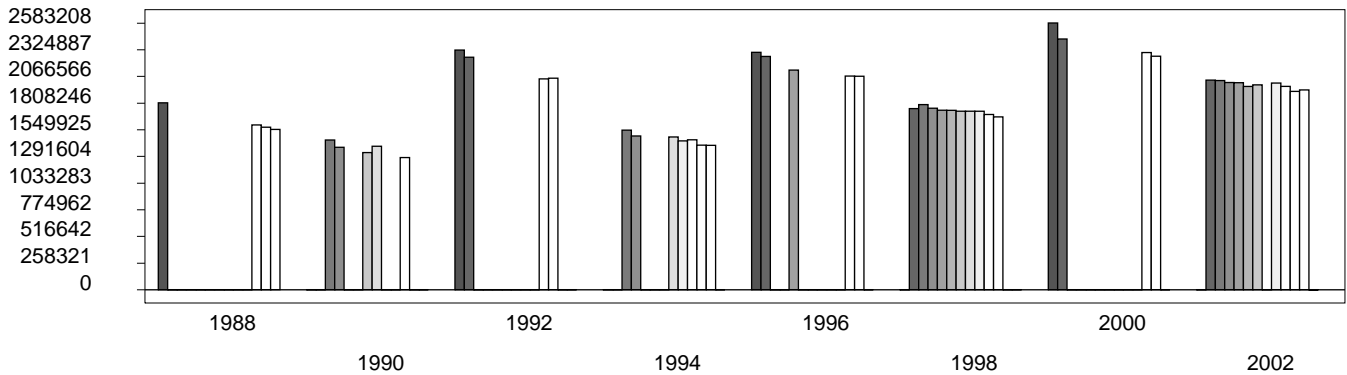


Figure 2. REPUBLICAN %. Refer to GOP-DEX for comparative value.

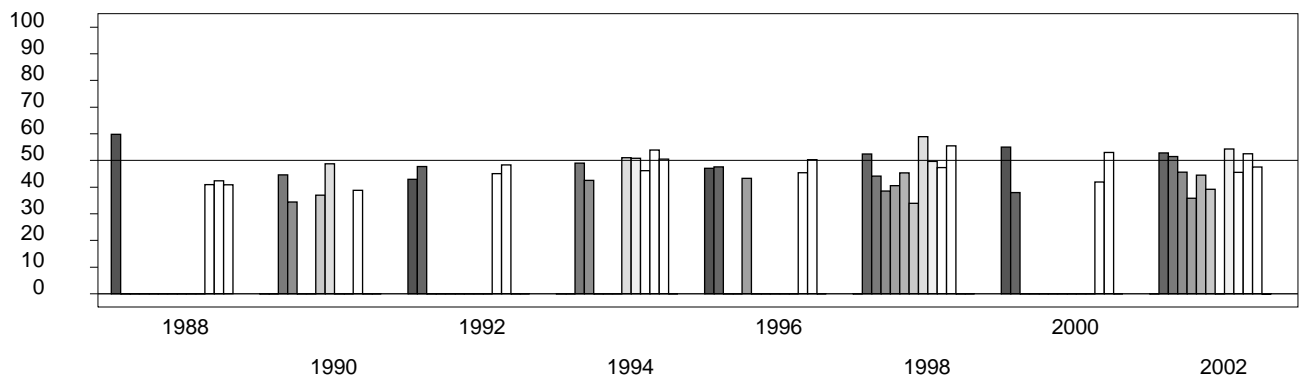


Figure 3. R-DEX: % by which County GOP% is above/below the State GOP%.

