

Race	Candidate GOP/Dem/Ind	GOP Vote	Dem Vote	Ind Vote	Total Vote	GOP %	Dem %	Ind %	Rem %	Plurality/Win	%of Marg	GOP Index
2000												
Pres	BUSH+/Gore	1,419,720	1,116,230	0	2,583,208*	55.0	43.2	0.0	1.8	303,490 R	11.8	0.0
1996												
Pres	DOLE/Clinton*/Perot	1,080,843	1,053,849	146,337	2,299,071*	47.0	45.8	6.4	0.8	26,994 r	1.2	0.0
1992												
Pres	Bush*/CLINTON/Perot	995,252	1,008,966	309,657	2,321,125*	42.9	43.5	13.3	0.3	13,714 d	0.6	0.0
1988												
Pres	BUSH+/Dukakis	1,081,331	714,792	0	1,809,672*	59.8	39.5	0.0	0.8	366,539 R	20.3	0.0
1984												
Pres	REAGAN/Mondale+	1,068,722	706,628	0	1,776,120*	60.2	39.8	0.0	0.0	362,094 R	20.4	0.0
1980												
Pres	Reagan/CARTER*	654,168	890,733	36,055	1,596,807*	41.0	55.8	2.3	1.0	236,565 D	14.8	0.0
1976												
Pres	Ford+/CARTER	483,743	979,409	0	1,467,458*	33.0	66.7	0.0	0.3	495,666 D	33.8	0.0
1972												
Pres	NIXON/McGovern	881,496	289,529	0	1,174,772*	75.0	24.7	0.0	0.3	591,967 R	50.4	0.0
1968												
Pres	Nixon+/Humphrey/WALLACE	380,111	334,440	535,550	1,250,266*	30.4	26.8	42.8	0.0	155,439 o	12.4	0.0
1964												
Pres	GOLDWATER/Johnson+	616,584	522,556	0	1,139,335*	54.1	45.9	0.0	0.0	94,028 R	8.3	0.0
1960												
Pres	Nixon/KENNEDY+	274,472	458,638	0	733,110	37.4	62.6	0.0	0.0	184,166 D	25.1	0.0
1956												
Pres	Eisenhower/STEVENSON*	222,778	444,688	0	669,655*	33.3	66.4	0.0	0.3	221,910 D	33.1	0.0
1952												
Pres	Eisenhower/STEVENSON+	198,961	456,823	0	655,785*	30.3	69.7	0.0	0.0	257,862 D	39.3	0.0
1948												
Pres	Dewey/TRUMAN+/Thurmond	76,691	254,646	85,135	418,844*	18.3	60.8	20.3	0.6	169,511 D	40.5	0.0
1944												
Pres	Dewey/ROOSEVELT*	59,900	268,187	0	328,129*	18.3	81.7	0.0	0.0	208,287 D	63.5	0.0
1940												
Pres	Willkie/ROOSEVELT*	46,495	265,194	0	312,672*	14.9	84.8	0.0	0.3	218,699 D	70.0	0.0
1936												
Pres	Landon/ROOSEVELT*	36,943	255,363	0	293,170*	12.6	87.1	0.0	0.3	218,420 D	74.5	0.0
1932												
Pres	Hoover/ROOSEVELT+	19,863	234,118	0	255,590*	7.8	91.6	0.0	0.6	214,255 D	83.8	0.0
1928												
Pres	Hoover/SMITH+	101,800	129,604	0	231,592*	44.0	56.0	0.0	0.0	27,804 D	12.0	0.0
1924												
Pres	Coolidge/DAVIS+/LaFollet	30,300	123,262	12,687	166,435*	18.2	74.1	7.6	0.1	92,962 D	55.9	0.0
1920												
Pres	Harding/COX+	42,981	106,112	0	149,558*	28.7	71.0	0.0	0.3	63,131 D	42.2	0.0

POLIDATA © Demographic and Political Guides. All Rights Reserved. Copyright © 2003. www.polidata.us

1. Winner in UPPERCASE. Incumbency: * for incumbent, + for party holding seat.

2. BOLDING indicates unit won by REPUBLICANS. Plurality in UPPERCASE indicates party which won unit won with a majority of the vote.

3. Total column may include votes for minor party candidates. An asterisk (*) follows the Total column if it includes votes not listed (see Rem%).

4. % of Marg(in) is Plurality as % of Total Vote. GOP Index (R-Dex) is the percentage (not percentage points) by which GOP% for County is above(+)/below(-) the State GOP%.

5. Order of races is standardized and may not match ballot order. Selected races only; non-competitive lower-ticket races may be omitted.

6. Each race is assigned a specific bar in the graphs. Top of the ticket is darkest bar and is at the left of each year cluster. Races not listed in the history table will result in blank bars.

Figure 1. TOTAL VOTES.

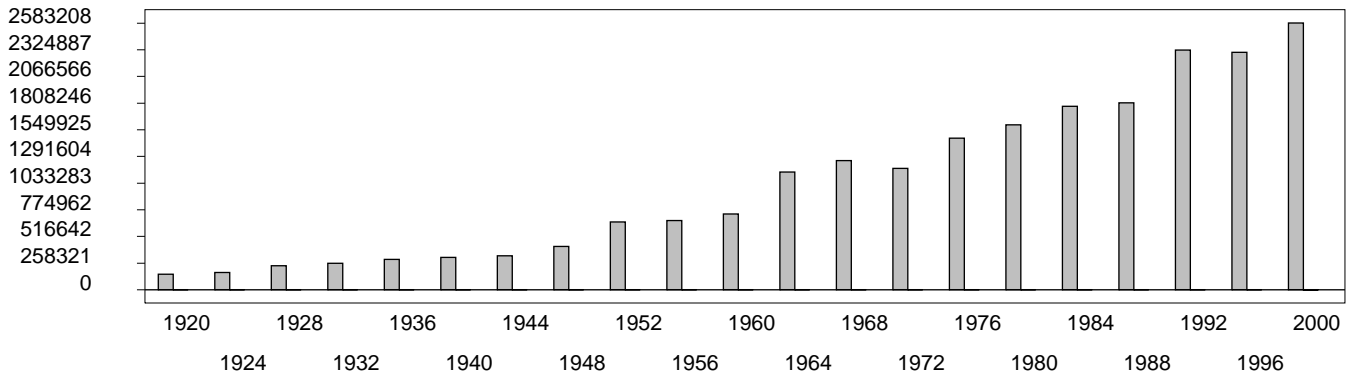


Figure 2. REPUBLICAN %. Refer to GOP-DEX for comparative value.

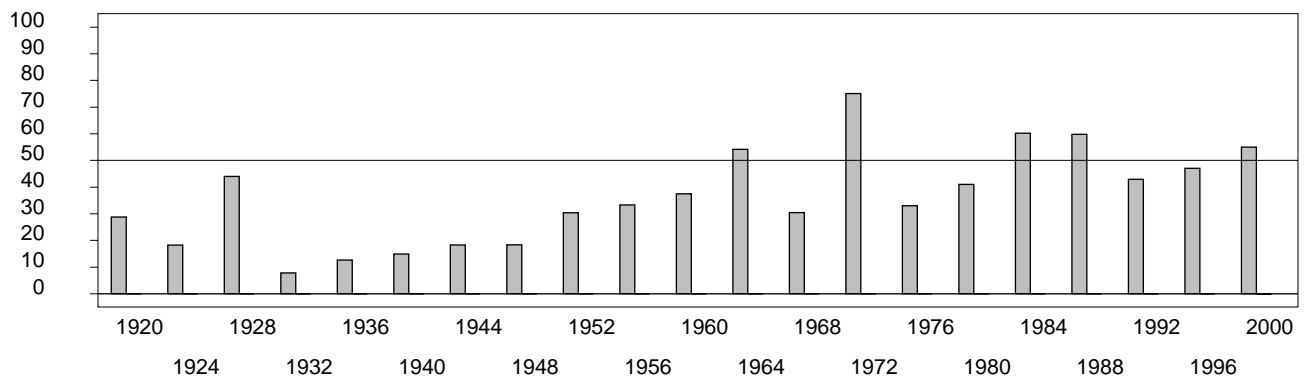


Figure 3. R-DEX: % by which County GOP% is above/below the State GOP%.



1. Winner in UPPERCASE. Incumbency: * for incumbent, + for party holding seat.
2. BOLDING indicates unit won by REPUBLICANS. Plurality in UPPERCASE indicates party which won unit won with a majority of the vote.
3. Total column may include votes for minor party candidates. An asterisk (*) follows the Total column if it includes votes not listed (see Rem%).
4. % of Marg(in) is Plurality as % of Total Vote. GOP Index (R-Dex) is the percentage (not percentage points) by which GOP% for County is above(+)/below(-) the State GOP%.
5. Order of races is standardized and may not match ballot order. Selected races only; non-competitive lower-ticket races may be omitted.
6. Each race is assigned a specific bar in the graphs. Top of the ticket is darkest bar and is at the left of each year cluster. Races not listed in the history table will result in blank bars.

[13000VHB-psvhcy21-CB14]