

Race	Candidate GOP/Dem/Ind	GOP Vote	Dem Vote	Ind Vote	Total Vote	GOP %	Dem %	Ind %	Rem %	Plurality/Win	%of Marg	GOP Index	
<b>2002</b>													
Sen	Durkin/DURBIN*	1,325,703	2,103,766	0	3,486,851*	38.0	60.3	0.0	1.7	778,063	D	22.3	0.0
Gov	Ryan, Jim+/BLAGOJEVICH	1,594,960	1,847,040	0	3,538,883*	45.1	52.2	0.0	2.7	252,080	D	7.1	0.0
AtG	Birkett+/MADIGAN	1,648,003	1,762,949	0	3,498,901*	47.1	50.4	0.0	2.5	114,946	D	3.3	0.0
Trs	TOPINKA*/Dart	1,896,020	1,499,055	0	3,461,668*	54.8	43.3	0.0	1.9	396,965	R	11.5	0.0
<b>2000</b>													
Pres	Bush/GORE+	2,019,421	2,589,026	0	4,742,111*	42.6	54.6	0.0	2.8	569,605	D	12.0	0.0
<b>1998</b>													
Sen	FITZGERALD/Moseley-Braun	1,709,041	1,610,496	0	3,394,241*	50.4	47.5	0.0	2.2	98,545	R	2.9	0.0
Gov	RYAN, GEO.+/Poshard	1,714,094	1,594,191	0	3,358,657*	51.0	47.5	0.0	1.5	119,903	R	3.6	0.0
AtG	RYAN, JIM*/Santos	2,026,781	1,242,979	0	3,326,704*	60.9	37.4	0.0	1.7	783,802	R	23.6	0.0
Sec	Salvi+/WHITE	1,437,420	1,874,626	0	3,379,742*	42.5	55.5	0.0	2.0	437,206	D	12.9	0.0
Comp	Lauzen+/HYNES	1,280,860	1,895,273	0	3,232,352*	39.6	58.6	0.0	1.7	614,413	D	19.0	0.0
Trs	TOPINKA*/McLaughlin	1,610,498	1,548,219	0	3,222,718*	50.0	48.0	0.0	2.0	62,279	r	1.9	0.0
<b>1996</b>													
Pres	Dole/CLINTON*/Perot	1,587,021	2,341,744	346,408	4,311,391*	36.8	54.3	8.0	0.8	754,723	D	17.5	0.0
Sen	Salvi/DURBIN+	1,728,824	2,384,028	0	4,250,722*	40.7	56.1	0.0	3.2	655,204	D	15.4	0.0
<b>1994</b>													
Gov	EDGAR*/Netsch	1,984,318	1,069,850	0	3,106,556*	63.9	34.4	0.0	1.7	914,468	R	29.4	0.0
AtG	RYAN, JIM/Hofeld+	1,651,976	1,371,295	0	3,080,375*	53.6	44.5	0.0	1.9	280,681	R	9.1	0.0
Sec	RYAN, GEO.*/Quinn	1,868,144	1,182,629	0	3,088,847*	60.5	38.3	0.0	1.2	685,515	R	22.2	0.0
Comp	DIDRICKSON/Collins+	1,615,122	1,208,128	0	2,936,321*	55.0	41.1	0.0	3.9	406,994	R	13.9	0.0
Trs	TOPINKA*/Sheehan+	1,504,335	1,427,317	0	2,984,760*	50.4	47.8	0.0	1.8	77,018	R	2.6	0.0
<b>1992</b>													
Pres	Bush*/CLINTON/Perot	1,734,096	2,453,350	840,515	5,050,157*	34.3	48.6	16.6	0.4	719,254	d	14.2	0.0
Sen	Williamson/MOSELEY-BRAUN	1,126,833	2,631,229	0	4,939,530*	43.1	53.3	0.0	3.7	504,396	D	10.2	0.0
<b>1990</b>													
Sen	Martin/SIMON*	1,135,628	2,115,377	0	3,251,005	34.9	65.1	0.0	0.0	979,749	D	30.1	0.0
Gov	EDGAR+*/Hartigan	1,653,126	1,569,217	0	3,257,410*	50.8	48.2	0.0	1.1	83,909	R	2.6	0.0
AtG	Ryan, Jim/BURRIS+	1,560,831	1,656,045	0	3,216,876	48.5	51.5	0.0	0.0	95,214	D	3.0	0.0
Sec	RYAN, GEO.+/Cosentino	1,680,531	1,465,785	0	3,146,316	53.4	46.6	0.0	0.0	214,746	R	6.8	0.0
Comp	Suter/NETSCH+	1,440,747	1,696,414	0	3,137,161	45.9	54.1	0.0	0.0	255,667	D	8.1	0.0
Trs	Baise/QUINN+	1,384,492	1,740,742	0	3,125,289*	44.3	55.7	0.0	0.0	356,250	D	11.4	0.0
<b>1988</b>													
Pres	BUSH+/Dukakis	2,310,939	2,215,940	0	4,559,120*	50.7	48.6	0.0	0.7	94,999	R	2.1	0.0
<b>1986</b>													
Sen	Koehler/DIXON*	1,053,734	2,033,783	0	3,122,883*	33.7	65.1	0.0	1.1	980,049	D	31.4	0.0
Gov	THOMPSON*/No D/Stevenson	1,655,849	208,830	1,256,626	3,143,978*	52.7	6.6	40.0	0.7	399,223	R	12.7	0.0
AtG	Carey/HARTIGAN*	1,129,193	1,925,012	0	3,119,229*	36.2	61.7	0.0	2.1	795,819	D	25.5	0.0
Comp	Geo-Karis/BURRIS*	1,074,923	1,880,413	0	3,066,151*	35.1	61.3	0.0	3.6	805,490	D	26.3	0.0
Trs	Houston/COSENTINO+	1,252,796	1,724,979	0	3,066,505*	40.9	56.3	0.0	2.9	472,183	D	15.4	0.0
<b>1984</b>													
Pres	REAGAN*/Mondale	2,707,103	2,086,499	0	4,819,088*	56.2	43.3	0.0	0.5	620,604	R	12.9	0.0
Sen	Percy*/SIMON	2,308,039	2,397,303	0	4,787,473*	48.2	50.1	0.0	1.7	89,264	D	1.9	0.0
<b>1982</b>													
Gov	THOMPSON*/Stevenson	1,816,101	1,811,027	0	3,673,546*	49.4	49.3	0.0	1.3	5,074	r	0.1	0.0
AtG	Fahner+/HARTIGAN	1,519,507	2,064,196	0	3,636,496*	41.8	56.8	0.0	1.5	544,689	D	15.0	0.0
Sec	EDGAR+/Cosentino	1,942,664	1,709,008	0	3,690,616*	52.6	46.3	0.0	1.1	233,656	R	6.3	0.0
Trs	Dailey/DONNEWALD+	1,573,496	1,940,828	0	3,607,027*	43.6	53.8	0.0	2.6	367,332	D	10.2	0.0

POLIDATA © Demographic and Political Guides. All Rights Reserved. Copyright © 2003. www.polidata.us

1. Statewide Winner in UPPERCASE. Incumbency: \* for incumbent, + for party holding seat.

2. BOLDING indicates unit won by REPUBLICANS. Plurality in UPPERCASE indicates unit won with a majority of the vote.

3. Total column may include votes for minor party candidates. An asterisk (\*) follows the Total column if it includes votes not listed (see Rem%).

4. % of Marg(in) is Plurality as % of Total Vote. GOP Index (R-Dex) is the percentage (not percentage points) by which GOP% for County is above(+)/below(-) the State GOP%.

5. Order of races is standardized and may not match ballot order. Selected races only; non-competitive lower-ticket races may be omitted.

6. Each race is assigned a specific bar in the graphs. Top of the ticket is darkest bar and is at the left of each year cluster. Races not listed in the history table will result in blank bars.

Figure 1. TOTAL VOTES.

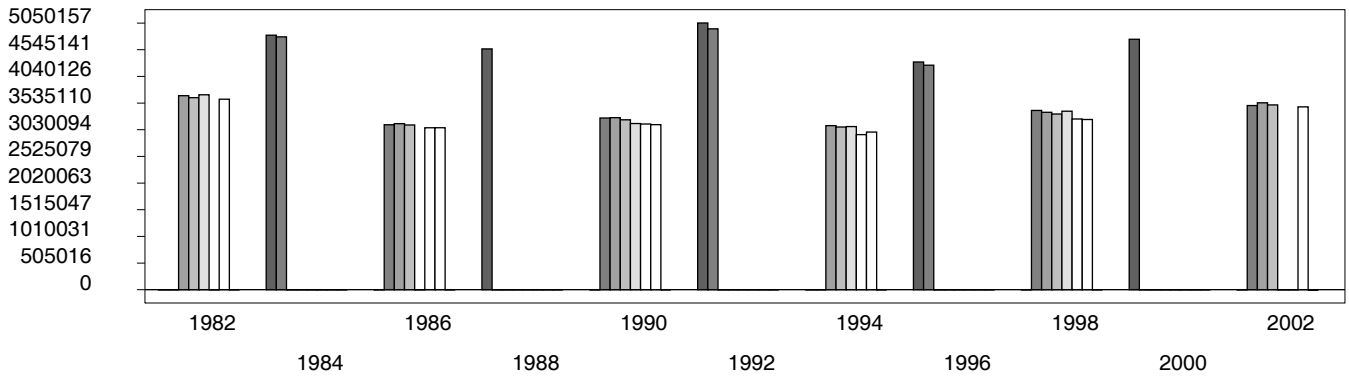


Figure 2. REPUBLICAN %. Refer to GOP-DEX for comparative value.

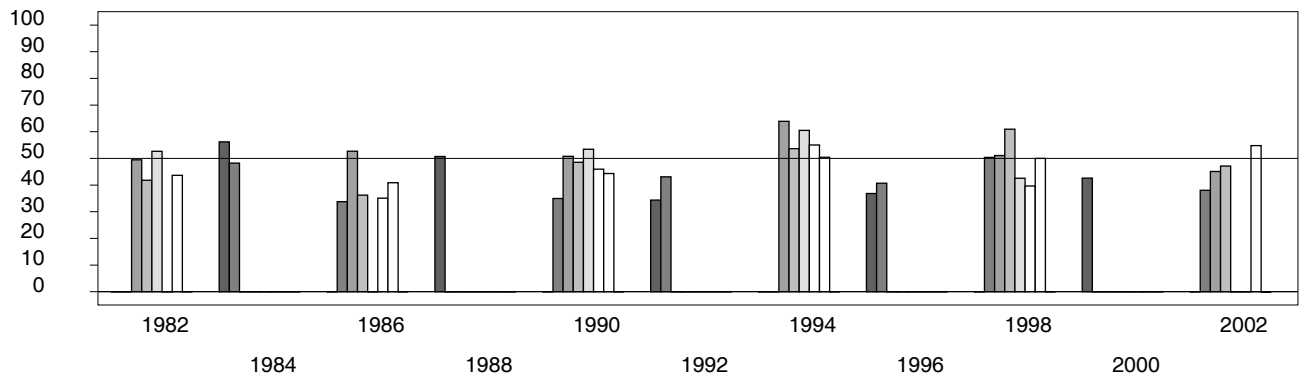


Figure 3. R-DEX: % by which County GOP% is above/below the State GOP%.



1. Statewide Winner in UPPERCASE. Incumbency: \* for incumbent, + for party holding seat.
2. BOLDING indicates unit won by REPUBLICANS. Plurality in UPPERCASE indicates unit won with a majority of the vote.
3. Total column may include votes for minor party candidates. An asterisk (\*) follows the Total column if it includes votes not listed (see Rem%).
4. % of Marg(in) is Plurality as % of Total Vote. GOP Index (R-Dex) is the percentage (not percentage points) by which GOP% for County is above(+)/below(-) the State GOP%.
5. Order of races is standardized and may not match ballot order. Selected races only; non-competitive lower-ticket races may be omitted.
6. Each race is assigned a specific bar in the graphs. Top of the ticket is darkest bar and is at the left of each year cluster. Races not listed in the history table will result in blank bars.

[17000VHA-psvhcy21-CH06]