

Race	Candidate GOP/Dem/Ind	GOP Vote	Dem Vote	Ind Vote	Total Vote	GOP %	Dem %	Ind %	Rem %	Plurality/Win	%of Marg	GOP Index	
2000													
Pres	Bush/GORE+	634,373	638,517	0	1,314,098*	48.3	48.6	0.0	3.1	4,144	d	0.3	0.0
1996													
Pres	Dole/CLINTON*/Perot	492,644	620,258	105,159	1,234,075*	39.9	50.3	8.5	1.3	127,614	D	10.3	0.0
1992													
Pres	Bush/CLINTON+/Perot	504,891	586,353	253,468	1,354,607*	37.3	43.3	18.7	0.7	81,462	d	6.0	0.0
1988													
Pres	Bush+/DUKAKIS	545,355	670,557	0	1,225,614*	44.5	54.7	0.0	0.8	125,202	D	10.2	0.0
1984													
Pres	REAGAN*/Mondale	703,088	605,620	0	1,319,805*	53.3	45.9	0.0	0.8	97,468	R	7.4	0.0
1980													
Pres	REAGAN+/Carter/Anderson	676,026	508,672	115,633	1,317,661*	51.3	38.6	8.8	1.3	167,354	R	12.7	0.0
1976													
Pres	FORD+/Carter	632,863	619,931	0	1,279,306*	49.5	48.5	0.0	2.1	12,932	r	1.0	0.0
1972													
Pres	NIXON*/McGovern	706,207	496,206	0	1,225,944*	57.6	40.5	0.0	1.9	210,001	R	17.1	0.0
1968													
Pres	NIXON/Humphrey+/Wallace	619,106	476,699	66,422	1,167,931*	53.0	40.8	5.7	0.5	142,407	R	12.2	0.0
1964													
Pres	Goldwater+/JOHNSON	449,148	733,030	0	1,184,539*	37.9	61.9	0.0	0.2	283,882	D	24.0	0.0
1960													
Pres	NIXON+/Kennedy	722,381	550,565	0	1,273,810*	56.7	43.2	0.0	0.0	171,816	R	13.5	0.0
1956													
Pres	EISENHOWER*/Stevenson	729,187	501,858	0	1,234,564*	59.1	40.7	0.0	0.3	227,329	R	18.4	0.0
1952													
Pres	EISENHOWER/Stevenson+	808,906	451,513	0	1,268,773*	63.8	35.6	0.0	0.7	357,393	R	28.2	0.0
1948													
Pres	Dewey*/TRUMAN	494,018	522,380	0	1,038,264*	47.6	50.3	0.0	2.1	28,362	D	2.7	0.0
1944													
Pres	DEWEY+/Roosevelt	547,267	499,876	0	1,052,599*	52.0	47.5	0.0	0.5	47,391	R	4.5	0.0
1940													
Pres	WILLKIE/Roosevelt*	632,370	578,802	0	1,215,432*	52.0	47.6	0.0	0.4	53,568	R	4.4	0.0
1936													
Pres	Landon/ROOSEVELT*	487,977	621,756	0	1,142,737*	42.7	54.4	0.0	2.9	133,779	D	11.7	0.0
1932													
Pres	Hoover*/ROOSEVELT	414,433	598,019	0	1,036,687*	40.0	57.7	0.0	2.3	183,586	D	17.7	0.0
1928													
Pres	HOOVER+/Smith	623,570	379,011	0	1,009,189*	61.8	37.6	0.0	0.7	244,559	R	24.2	0.0
1924													
Pres	COOLIDGE+/Davis/LaFollet	537,458	160,382	274,448	976,770*	55.0	16.4	28.1	0.5	263,010	R	26.9	0.0
1920													
Pres	HARDING+/Cox	634,674	227,804	0	894,959*	70.9	25.5	0.0	3.6	406,870	R	45.5	0.0

POLIDATA © Demographic and Political Guides. All Rights Reserved. Copyright © 2003. www.polidata.us

1. Statewide Winner in UPPERCASE. Incumbency: * for incumbent, + for party holding seat. IA: Lieutenant Governor is elected on same ticket with Governor.

2. BOLDING indicates unit won by REPUBLICANS. Plurality in UPPERCASE indicates unit won with a majority of the vote.

3. Total column may include votes for minor party candidates. An asterisk (*) follows the Total column if it includes votes not listed (see Rem%).

4. % of Marg(in) is Plurality as % of Total Vote. GOP Index (R-Dex) is the percentage (not percentage points) by which GOP% for County is above(+)/below(-) the State GOP%.

5. Order of races is standardized and may not match ballot order. Selected races only; non-competitive lower-ticket races may be omitted.

6. Each race is assigned a specific bar in the graphs. Top of the ticket is darkest bar and is at the left of each year cluster. Races not listed in the history table will result in blank bars.

Figure 1. TOTAL VOTES.

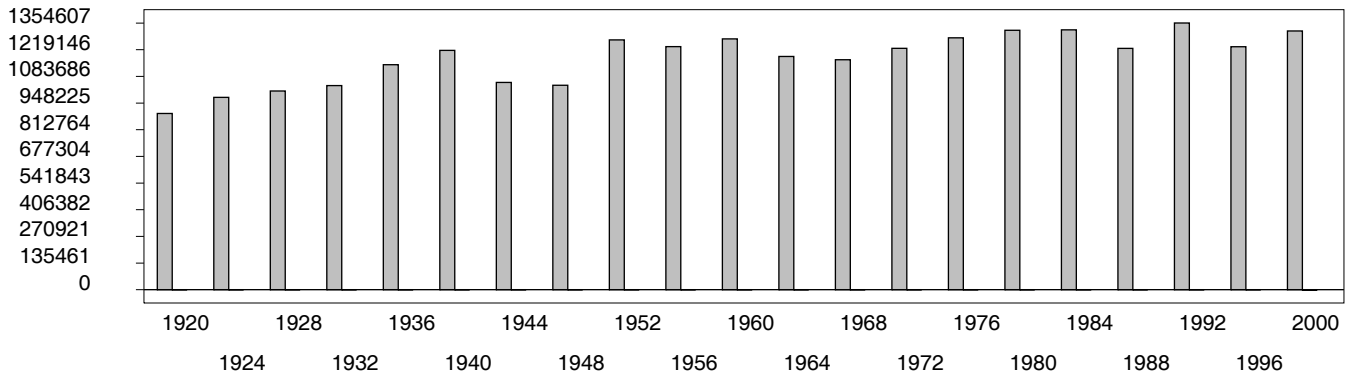


Figure 2. REPUBLICAN %. Refer to GOP-DEX for comparative value.

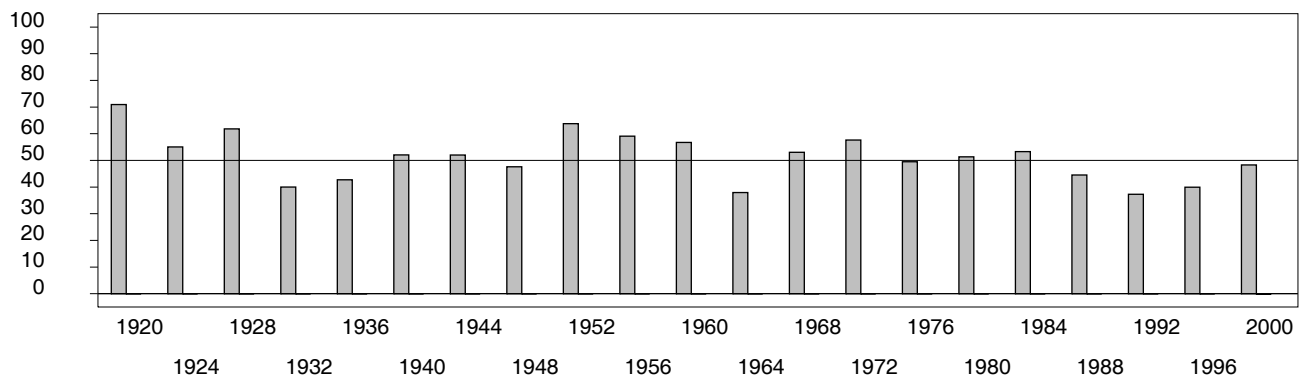


Figure 3. R-DEX: % by which County GOP% is above/below the State GOP%.



1. Statewide Winner in UPPERCASE. Incumbency: * for incumbent, + for party holding seat. IA: Lieutenant Governor is elected on same ticket with Governor.
2. BOLDING indicates unit won by REPUBLICANS. Plurality in UPPERCASE indicates unit won with a majority of the vote.
3. Total column may include votes for minor party candidates. An asterisk (*) follows the Total column if it includes votes not listed (see Rem%).
4. % of Marg(in) is Plurality as % of Total Vote. GOP Index (R-Dex) is the percentage (not percentage points) by which GOP% for County is above(+)/below(-) the State GOP%.
5. Order of races is standardized and may not match ballot order. Selected races only; non-competitive lower-ticket races may be omitted.
6. Each race is assigned a specific bar in the graphs. Top of the ticket is darkest bar and is at the left of each year cluster. Races not listed in the history table will result in blank bars.

[19000VHB-psvhcy21-CH27]