

Race	Candidate GOP/Dem/Ind	GOP Vote	Dem Vote	Ind Vote	Total Vote	GOP %	Dem %	Ind %	Rem %	Plurality/Win	%of Marg	GOP Index
2000												
Pres	BUSH/Gore+	872,492	638,898	0	1,544,107*	56.5	41.4	0.0	2.1	233,594 R	15.1	0.0
1996												
Pres	Dole/CLINTON*	623,283	636,614	120,396	1,388,708*	44.9	45.8	8.7	0.6	13,331 d	1.0	0.0
1992												
Pres	Bush*/CLINTON	617,178	665,104	203,944	1,486,226	41.5	44.8	13.7	0.0	47,926 d	3.2	0.0
1988												
Pres	BUSH+/Dukakis	734,281	580,368	0	1,322,517*	55.5	43.9	0.0	0.6	153,913 R	11.6	0.0
1984												
Pres	REAGAN*/Mondale	821,702	539,539	0	1,369,345*	60.0	39.4	0.0	0.6	282,163 R	20.6	0.0
1980												
Pres	REAGAN/Carter*	635,274	616,417	31,127	1,294,627*	49.1	47.6	2.4	0.9	18,857 r	1.5	0.0
1976												
Pres	Ford+/CARTER	531,852	615,717	0	1,167,142*	45.6	52.8	0.0	1.7	83,865 D	7.2	0.0
1972												
Pres	NIXON*/McGovern	676,446	371,159	0	1,067,499*	63.4	34.8	0.0	1.9	305,287 R	28.6	0.0
1968												
Pres	NIXON/Humphrey+/Wallace	462,411	397,541	193,098	1,055,893*	43.8	37.7	18.3	0.3	64,870 r	6.1	0.0
1964												
Pres	Goldwater+/JOHNSON	372,977	669,659	0	1,046,105*	35.7	64.0	0.0	0.3	296,682 D	28.4	0.0
1960												
Pres	NIXON+/Kennedy	602,607	521,855	0	1,124,462	53.6	46.4	0.0	0.0	80,752 R	7.2	0.0
1956												
Pres	EISENHOWER/Stevenson*	572,192	476,453	0	1,053,805*	54.3	45.2	0.0	0.5	95,739 R	9.1	0.0
1952												
Pres	Eisenhower/STEVENSON+	495,029	495,729	0	993,148*	49.8	49.9	0.0	0.2	700 d	0.1	0.0
1948												
Pres	Dewey/TRUMAN+	341,210	466,756	0	822,658*	41.5	56.7	0.0	1.8	125,546 D	15.3	0.0
1944												
Pres	Dewey/ROOSEVELT*	392,448	472,589	0	867,924*	45.2	54.5	0.0	0.3	80,141 D	9.2	0.0
1940												
Pres	Willkie/ROOSEVELT*	410,384	557,322	0	970,163*	42.3	57.5	0.0	0.3	146,938 D	15.2	0.0
1936												
Pres	Landon/ROOSEVELT*	369,702	541,944	0	926,214*	39.9	58.5	0.0	1.6	172,242 D	18.6	0.0
1932												
Pres	Hoover*/ROOSEVELT	394,716	580,574	0	983,059*	40.2	59.1	0.0	0.8	185,858 D	18.9	0.0
1928												
Pres	HOOVER+/Smith	558,064	381,070	0	939,134	59.4	40.6	0.0	0.0	176,994 R	18.8	0.0
1924												
Pres	COOLIDGE/Davis+/LaFoll.	396,758	375,593	41,492	813,843	48.8	46.2	5.1	0.0	21,165 r	2.6	0.0
1920												
Pres	Harding/COX+	452,480	456,497	0	918,636*	49.3	49.7	0.0	1.1	4,017 d	0.4	0.0

POLIDATA © Demographic and Political Guides. All Rights Reserved. Copyright © 2003. www.polidata.us

1. Statewide Winner in UPPERCASE. Incumbency: * for incumbent, + for party holding seat.

2. BOLDING indicates unit won by REPUBLICANS. Plurality in UPPERCASE indicates unit won with a majority of the vote.

3. Total column may include votes for minor party candidates. An asterisk (*) follows the Total column if it includes votes not listed (see Rem%).

4. % of Marg(in) is Plurality as % of Total Vote. GOP Index (R-Dex) is the percentage (not percentage points) by which GOP% for County is above(+)/below(-) the State GOP%.

5. Order of races is standardized and may not match ballot order. Selected races only; non-competitive lower-ticket races may be omitted.

6. Each race is assigned a specific bar in the graphs. Top of the ticket is darkest bar and is at the left of each year cluster. Races not listed in the history table will result in blank bars.

Figure 1. TOTAL VOTES.

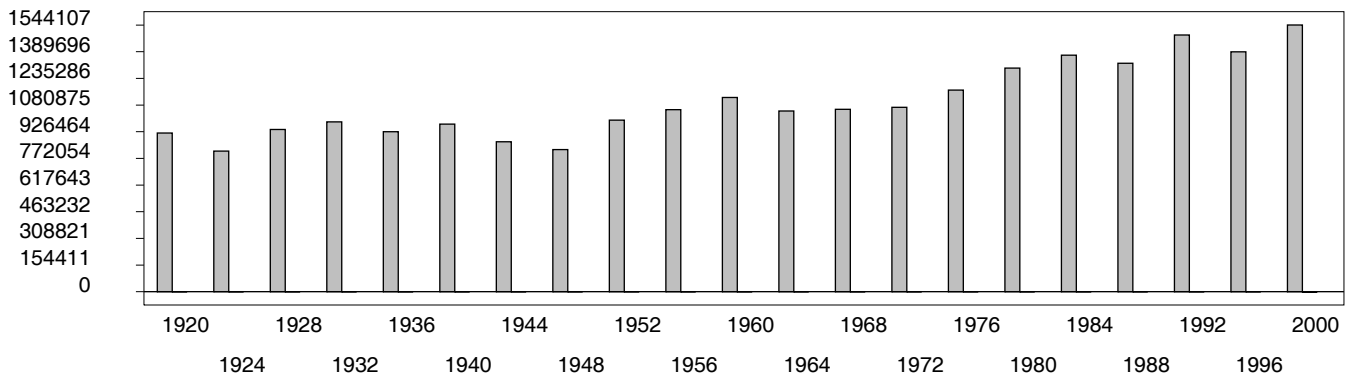


Figure 2. REPUBLICAN %. Refer to GOP-DEX for comparative value.

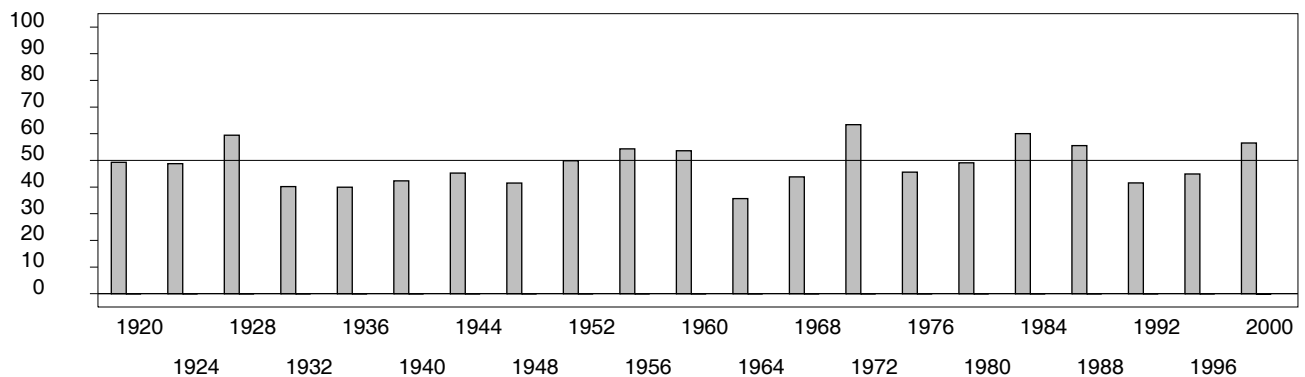
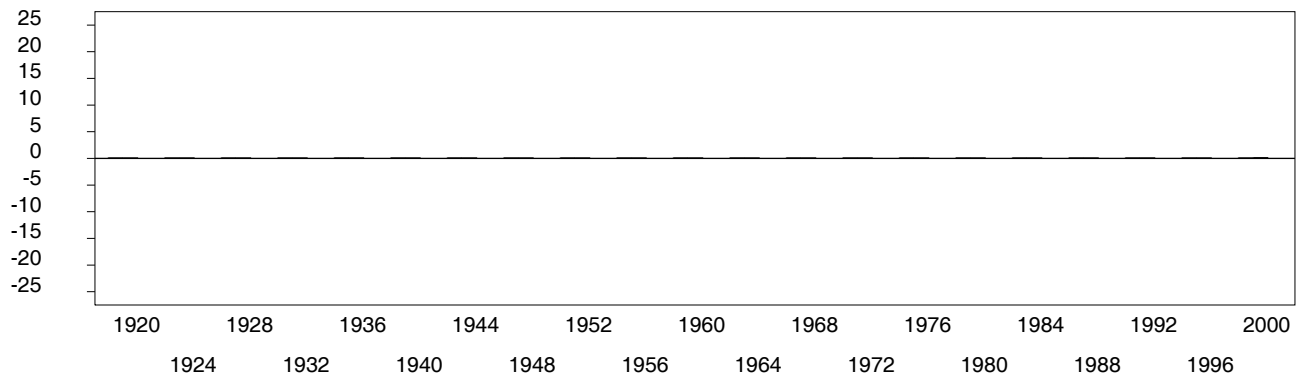


Figure 3. R-DEX: % by which County GOP% is above/below the State GOP%.



1. Statewide Winner in UPPERCASE. Incumbency: * for incumbent, + for party holding seat.

2. BOLDING indicates unit won by REPUBLICANS. Plurality in UPPERCASE indicates unit won with a majority of the vote.

3. Total column may include votes for minor party candidates. An asterisk (*) follows the Total column if it includes votes not listed (see Rem%).

4. % of Marg(in) is Plurality as % of Total Vote. GOP Index (R-Dex) is the percentage (not percentage points) by which GOP% for County is above(+)/below(-) the State GOP%.

5. Order of races is standardized and may not match ballot order. Selected races only; non-competitive lower-ticket races may be omitted.

6. Each race is assigned a specific bar in the graphs. Top of the ticket is darkest bar and is at the left of each year cluster. Races not listed in the history table will result in blank bars.