

Race	Candidate GOP/Dem/Ind	GOP Vote	Dem Vote	Ind Vote	Total Vote	GOP %	Dem %	Ind %	Rem %	Plurality/Win	%of Marg	GOP Index
<b>2000</b>												
Pres	BUSH/Gore+	927,871	792,344	0	1,764,553*	52.6	44.9	0.0	2.5	135,527 R	7.7	0.0
<b>1996</b>												
Pres	Dole/CLINTON*	712,586	927,837	123,293	1,783,959*	39.9	52.0	6.9	1.1	215,251 D	12.1	0.0
<b>1992</b>												
Pres	Bush*/CLINTON/Perot	733,386	815,971	211,478	1,807,210*	40.6	45.2	11.7	2.6	82,585 d	4.6	0.0
<b>1988</b>												
Pres	BUSH+/Dukakis	883,702	717,460	0	1,628,202*	54.3	44.1	0.0	1.7	166,242 R	10.2	0.0
<b>1984</b>												
Pres	REAGAN/Mondale	1,037,299	651,586	0	1,706,822*	60.8	38.2	0.0	1.1	385,713 R	22.6	0.0
<b>1980</b>												
Pres	REAGAN/Carter*	792,853	708,453	26,345	1,548,591*	51.2	45.8	1.7	1.4	84,400 R	5.5	0.0
<b>1976</b>												
Pres	Ford+/CARTER	587,446	661,365	0	1,278,439*	46.0	51.7	0.0	2.3	73,919 D	5.8	0.0
<b>1972</b>												
Pres	NIXON/McGovern	686,852	298,142	0	1,051,491*	65.3	28.4	0.0	6.3	388,710 R	37.0	0.0
<b>1968</b>												
Pres	Nixon/Humphrey+/WALLACE	257,535	309,615	530,300	1,097,450	23.5	28.2	48.3	0.0	220,685 o	20.1	0.0
<b>1964</b>												
Pres	GOLDWATER/Johnson+	509,225	387,068	0	896,293	56.8	43.2	0.0	0.0	122,157 R	13.6	0.0
<b>1960</b>												
Pres	Nixon+/KENNEDY/Unpledged	230,980	407,339	169,572	807,891	28.6	50.4	21.0	0.0	176,359 D	21.8	0.0
<b>1956</b>												
Pres	EISENHOWER/Stevenson*/Un	329,047	243,977	0	617,544*	53.3	39.5	0.0	7.2	85,070 R	13.8	0.0
<b>1952</b>												
Pres	Eisenhower/STEVENSON+	306,925	345,027	0	651,952	47.1	52.9	0.0	0.0	38,102 D	5.8	0.0
<b>1948</b>												
Pres	Dewey/Truman+/THURMOND	72,657	136,344	204,290	416,336*	17.5	32.8	49.1	0.7	67,946 o	16.3	0.0
<b>1944</b>												
Pres	Dewey/ROOSEVELT*	67,750	281,564	0	349,314	19.4	80.6	0.0	0.0	213,814 D	61.2	0.0
<b>1940</b>												
Pres	Willkie/ROOSEVELT*	52,446	319,751	0	372,197	14.1	85.9	0.0	0.0	267,305 D	71.8	0.0
<b>1936</b>												
Pres	Landon/ROOSEVELT*	36,791	292,894	0	329,685	11.2	88.8	0.0	0.0	256,103 D	77.7	0.0
<b>1932</b>												
Pres	Hoover/ROOSEVELT+	18,853	249,418	0	268,271	7.0	93.0	0.0	0.0	230,565 D	85.9	0.0
<b>1928</b>												
Pres	Hoover/SMITH+	51,160	164,655	0	215,815	23.7	76.3	0.0	0.0	113,495 D	52.6	0.0
<b>1924</b>												
Pres	Coolidge/DAVIS+	24,670	93,218	0	121,951*	20.2	76.4	0.0	3.3	68,548 D	56.2	0.0
<b>1920</b>												
Pres	Harding/COX+	38,539	87,519	0	126,058	30.6	69.4	0.0	0.0	48,980 D	38.9	0.0

POLIDATA © Demographic and Political Guides. All Rights Reserved. Copyright © 2003. www.polidata.us

1. Statewide Winner in UPPERCASE. Incumbency: \* for incumbent, + for party holding seat.

2. BOLDING indicates unit won by REPUBLICANS. Plurality in UPPERCASE indicates unit won with a majority of the vote.

3. Total column may include votes for minor party candidates. An asterisk (\*) follows the Total column if it includes votes not listed (see Rem%).

4. % of Marg(in) is Plurality as % of Total Vote. GOP Index (R-Dex) is the percentage (not percentage points) by which GOP% for County is above(+)/below(-) the State GOP%.

5. Order of races is standardized and may not match ballot order. Selected races only; non-competitive lower-ticket races may be omitted.

6. Each race is assigned a specific bar in the graphs. Top of the ticket is darkest bar and is at the left of each year cluster. Races not listed in the history table will result in blank bars.

Figure 1. TOTAL VOTES.

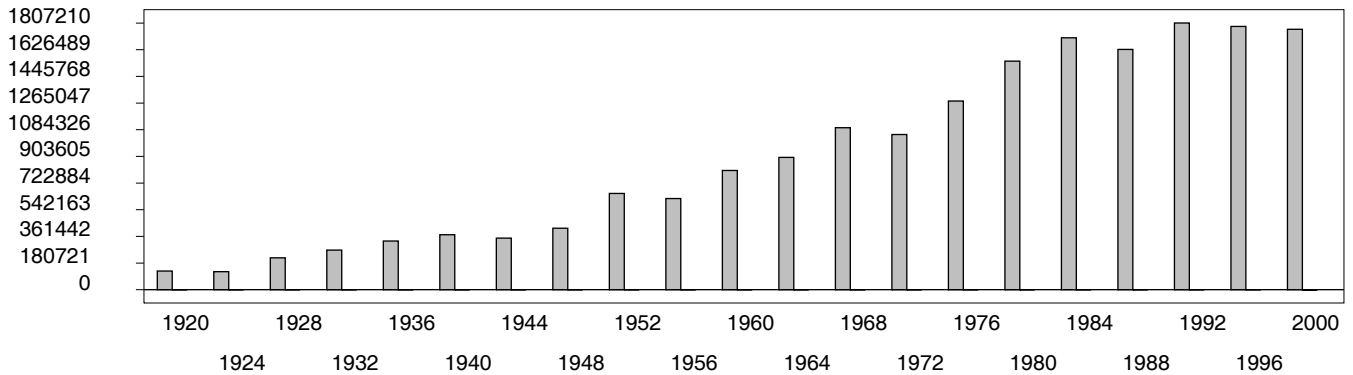


Figure 2. REPUBLICAN %. Refer to GOP-DEX for comparative value.

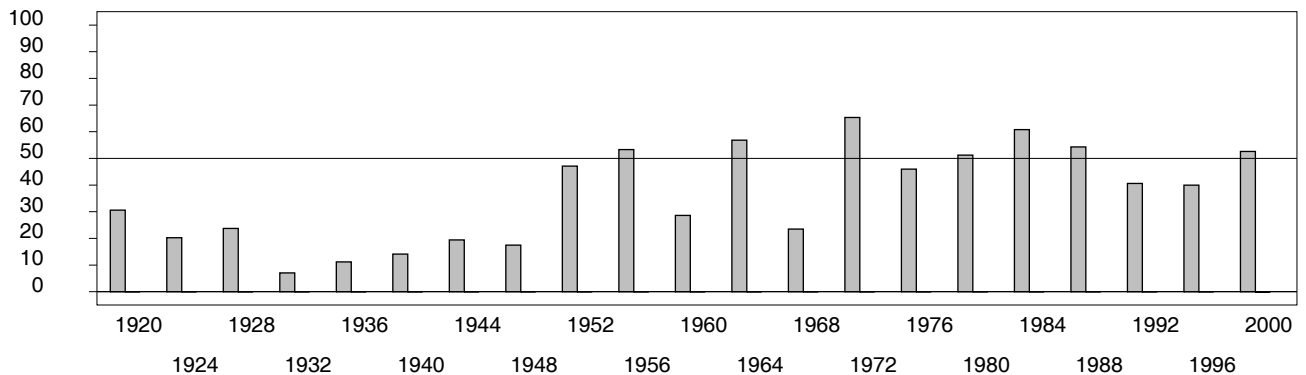


Figure 3. R-DEX: % by which County GOP% is above/below the State GOP%.

