

Race	Candidate GOP/Dem/Ind	GOP Vote	Dem Vote	Ind Vote	Total Vote	GOP %	Dem %	Ind %	Rem %	Plurality/Win	%of Marg	GOP Index
2002												
Sen	COLLINS*/Pingree	295,041	209,858	0	504,899	58.4	41.6	0.0	0.0	85,183 R	16.9	0.0
Cong	All Districts	205,780	289,514	0	495,294	41.6	58.5	0.0	0.0	83,734 D	16.9	0.0
Gov	Cianchette/BALDACCI/Cart	209,496	238,179	46,903	505,190*	41.5	47.2	9.3	2.1	28,683 d	5.7	0.0
2000												
Pres	Bush/GORE+/Nader	286,616	319,951	0	651,790*	44.0	49.1	0.0	6.9	33,335 d	5.1	0.0
Sen	SNOWE*/Lawrence	437,689	197,183	0	634,872	68.9	31.1	0.0	0.0	240,506 R	37.9	0.0
Cong	All Districts	203,437	422,606	0	638,399*	31.9	66.2	0.0	1.9	219,169 D	34.3	0.0
1998												
Cong	All Districts	124,834	280,537	0	414,553*	30.1	67.7	0.0	2.2	155,703 D	37.6	0.0
Gov	Longley/Connolly/KING*	79,716	50,506	246,772	421,009*	18.9	12.0	58.6	10.5	167,056 O	39.7	0.0
1996												
Pres	Dole/CLINTON*/Perot	186,378	312,788	85,970	605,897*	30.8	51.6	14.2	3.4	126,410 D	20.9	0.0
Sen	COLLINS+/Brennan	298,422	266,226	0	606,707*	49.2	43.9	0.0	6.9	32,196 r	5.3	0.0
Cong	All Districts	211,210	379,184	0	599,688*	35.2	63.2	0.0	1.6	167,974 D	28.0	0.0
1994												
Sen	SNOWE/Andrews+	308,444	186,042	0	511,933*	60.3	36.3	0.0	3.4	122,402 R	23.9	0.0
Cong	All Districts	234,070	235,988	21,117	502,663*	46.6	47.0	4.2	2.3	1,918 d	0.4	0.0
Gov	Collins+/Brennan/KING	117,990	172,951	180,829	511,308*	23.1	33.8	35.4	7.7	7,878 o	1.5	0.0
1992												
Pres	Bush*/CLINTON/Perot	206,504	263,420	206,820	679,499*	30.4	38.8	30.4	0.4	56,600 d	8.3	0.0
Cong	All Districts	278,258	363,520	27,526	669,304	41.6	54.3	4.1	0.0	85,262 D	12.7	0.0
1990												
Sen	COHEN*/Rolde	319,167	201,053	0	520,320*	61.3	38.6	0.0	0.0	118,114 R	22.7	0.0
Cong	All Districts	232,540	284,421	0	516,961	45.0	55.0	0.0	0.0	51,881 D	10.0	0.0
Gov	MCKERNAN*/Brennan/Adam	243,766	230,038	48,377	522,492*	46.7	44.0	9.3	0.0	13,728 r	2.6	0.0
1988												
Pres	BUSH+/Dukakis	307,131	243,569	0	555,035*	55.3	43.9	0.0	0.8	63,562 R	11.5	0.0
Cong	All Districts	278,354	276,335	0	554,689	50.2	49.8	0.0	0.0	2,019 R	0.4	0.0
1986												
Cong	All Districts	249,030	165,462	0	421,630*	59.1	39.2	0.0	1.7	83,568 R	19.8	0.0
Gov	MCKERNAN/Tierney+/Menari	170,312	128,744	64,317	426,847*	39.9	30.2	15.1	14.9	41,568 r	9.7	0.0
1984												
Pres	REAGAN*/Mondale	336,500	214,515	0	553,144*	60.8	38.8	0.0	0.4	121,985 R	22.1	0.0
Cong	All Districts	374,951	162,319	0	541,538*	69.2	30.0	0.0	0.8	212,632 R	39.3	0.0
1982												
Sen	Emery/MITCHELL*	179,882	279,819	0	459,701	39.1	60.9	0.0	0.0	99,937 D	21.7	0.0
Cong	All Districts	260,925	186,970	0	452,141*	57.7	41.4	0.0	0.9	73,955 R	16.4	0.0
Gov	Cragin/BRENNAN*	172,949	281,066	0	460,295*	37.6	61.1	0.0	1.4	108,117 D	23.5	0.0
1980												
Pres	REAGAN+/Carter/Anderson	238,522	220,974	53,327	523,011*	45.6	42.3	10.2	2.0	17,548 r	3.4	0.0

POLIDATA © Demographic and Political Guides. All Rights Reserved. Copyright © 2003. www.polidata.us

1. Statewide Winner in UPPERCASE. Incumbency: * for incumbent, + for party holding seat.

2. BOLDING indicates unit won by REPUBLICANS. Plurality in UPPERCASE indicates unit won with a majority of the vote.

3. Total column may include votes for minor party candidates. An asterisk (*) follows the Total column if it includes votes not listed (see Rem%).

4. % of Marg(in) is Plurality as % of Total Vote. GOP Index (R-Dex) is the percentage (not percentage points) by which GOP% for County is above(+)/below(-) the State GOP%.

5. Order of races is standardized and may not match ballot order. Selected races only; non-competitive lower-ticket races may be omitted.

6. Each race is assigned a specific bar in the graphs. Top of the ticket is darkest bar and is at the left of each year cluster. Races not listed in the history table will result in blank bars.

Figure 1. TOTAL VOTES.

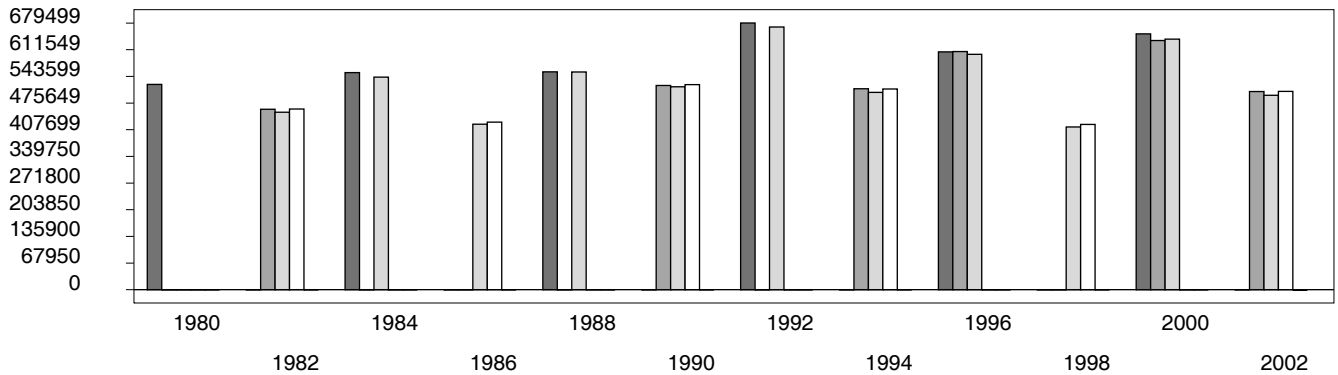


Figure 2. REPUBLICAN %. Refer to GOP-DEX for comparative value.

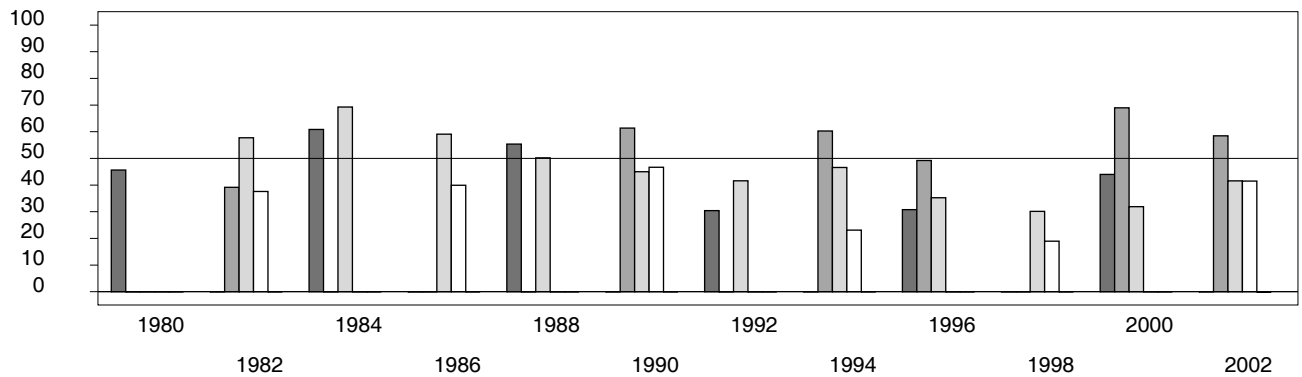
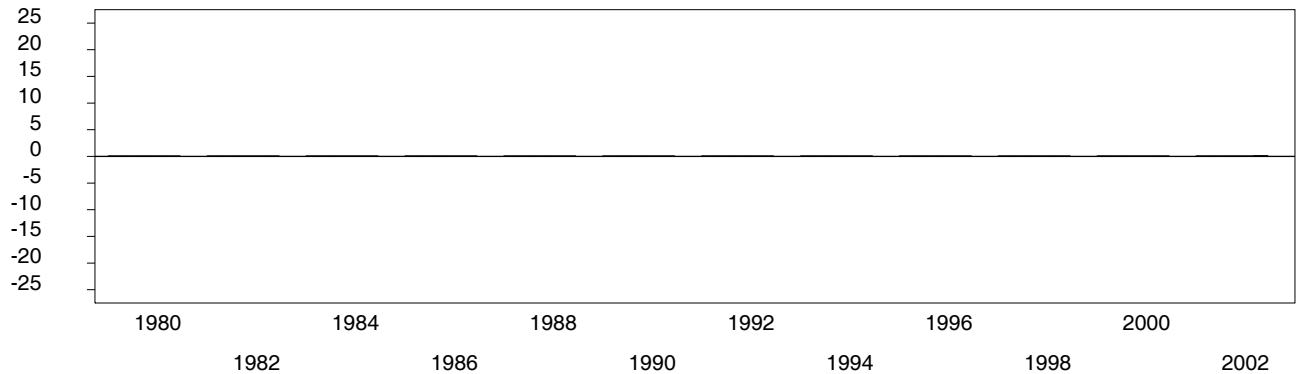


Figure 3. R-DEX: % by which County GOP% is above/below the State GOP%.



1. Statewide Winner in UPPERCASE. Incumbency: * for incumbent, + for party holding seat.
2. BOLDING indicates unit won by REPUBLICANS. Plurality in UPPERCASE indicates unit won with a majority of the vote.
3. Total column may include votes for minor party candidates. An asterisk (*) follows the Total column if it includes votes not listed (see Rem%).
4. % of Marg(in) is Plurality as % of Total Vote. GOP Index (R-Dex) is the percentage (not percentage points) by which GOP% for County is above(+)/below(-) the State GOP%.
5. Order of races is standardized and may not match ballot order. Selected races only; non-competitive lower-ticket races may be omitted.
6. Each race is assigned a specific bar in the graphs. Top of the ticket is darkest bar and is at the left of each year cluster. Races not listed in the history table will result in blank bars.

[23000VHA-psvhcy21-CH01]