

Race	Candidate GOP/Dem/Ind	GOP Vote	Dem Vote	Ind Vote	Total Vote	GOP %	Dem %	Ind %	Rem %	Plurality/Win	%of Marg	GOP Index
2000												
Pres	Bush/GORE+/Nader	286,616	319,951	0	651,790*	44.0	49.1	0.0	6.9	33,335 d	5.1	0.0
1996												
Pres	Dole/CLINTON*/Perot	186,378	312,788	85,970	605,897*	30.8	51.6	14.2	3.4	126,410 D	20.9	0.0
1992												
Pres	Bush*/CLINTON/Perot	206,504	263,420	206,820	679,499*	30.4	38.8	30.4	0.4	56,600 d	8.3	0.0
1988												
Pres	BUSH+/Dukakis	307,131	243,569	0	555,035*	55.3	43.9	0.0	0.8	63,562 R	11.5	0.0
1984												
Pres	REAGAN*/Mondale	336,500	214,515	0	553,144*	60.8	38.8	0.0	0.4	121,985 R	22.1	0.0
1980												
Pres	REAGAN+/Carter/Anderson	238,522	220,974	53,327	523,011*	45.6	42.3	10.2	2.0	17,548 r	3.4	0.0
1976												
Pres	FORD+/Carter	236,320	232,279	0	483,216*	48.9	48.1	0.0	3.0	4,041 r	0.8	0.0
1972												
Pres	NIXON/McGovern+	256,458	160,584	0	417,042	61.5	38.5	0.0	0.0	95,874 R	23.0	0.0
1968												
Pres	Nixon/HUMPHREY+	169,254	217,312	0	392,936*	43.1	55.3	0.0	1.6	48,058 D	12.2	0.0
1964												
Pres	Goldwater+/JOHNSON	118,701	262,264	0	380,965	31.2	68.8	0.0	0.0	143,563 D	37.7	0.0
1960												
Pres	NIXON+/Kennedy	240,608	181,159	0	421,767	57.1	43.0	0.0	0.0	59,449 R	14.1	0.0
1956												
Pres	EISENHOWER*/Stevenson	249,238	102,468	0	351,706	70.9	29.1	0.0	0.0	146,770 R	41.7	0.0
1952												
Pres	EISENHOWER+/Stevenson	232,353	118,806	0	351,786*	66.1	33.8	0.0	0.2	113,547 R	32.3	0.0
1948												
Pres	DEWEY*/Truman	150,234	111,916	0	264,787*	56.7	42.3	0.0	1.0	38,318 R	14.5	0.0
1944												
Pres	DEWEY+/Roosevelt	155,434	140,631	0	296,400*	52.4	47.5	0.0	0.1	14,803 R	5.0	0.0
1940												
Pres	WILLKIE+/Roosevelt	163,951	156,478	0	320,840*	51.1	48.8	0.0	0.1	7,473 R	2.3	0.0
1936												
Pres	LANDON+/Roosevelt	168,823	126,333	0	304,240*	55.5	41.5	0.0	3.0	42,490 R	14.0	0.0
1932												
Pres	HOOVER*/Roosevelt	166,631	128,907	0	298,444*	55.8	43.2	0.0	1.0	37,724 R	12.6	0.0
1928												
Pres	HOOVER+/Smith	179,923	81,179	0	262,170*	68.6	31.0	0.0	0.4	98,744 R	37.7	0.0
1924												
Pres	COOLIDGE+/Davis/LaFollet	138,440	41,964	11,788	192,192	72.0	21.8	6.1	0.0	96,476 R	50.2	0.0
1920												
Pres	HARDING+/Cox	136,355	58,961	0	197,840*	68.9	29.8	0.0	1.3	77,394 R	39.1	0.0

POLIDATA © Demographic and Political Guides. All Rights Reserved. Copyright © 2003. www.polidata.us

1. Statewide Winner in UPPERCASE. Incumbency: * for incumbent, + for party holding seat.

2. BOLDING indicates unit won by REPUBLICANS. Plurality in UPPERCASE indicates unit won with a majority of the vote.

3. Total column may include votes for minor party candidates. An asterisk (*) follows the Total column if it includes votes not listed (see Rem%).

4. % of Marg(in) is Plurality as % of Total Vote. GOP Index (R-Dex) is the percentage (not percentage points) by which GOP% for County is above(+)/below(-) the State GOP%.

5. Order of races is standardized and may not match ballot order. Selected races only; non-competitive lower-ticket races may be omitted.

6. Each race is assigned a specific bar in the graphs. Top of the ticket is darkest bar and is at the left of each year cluster. Races not listed in the history table will result in blank bars.

Figure 1. TOTAL VOTES.

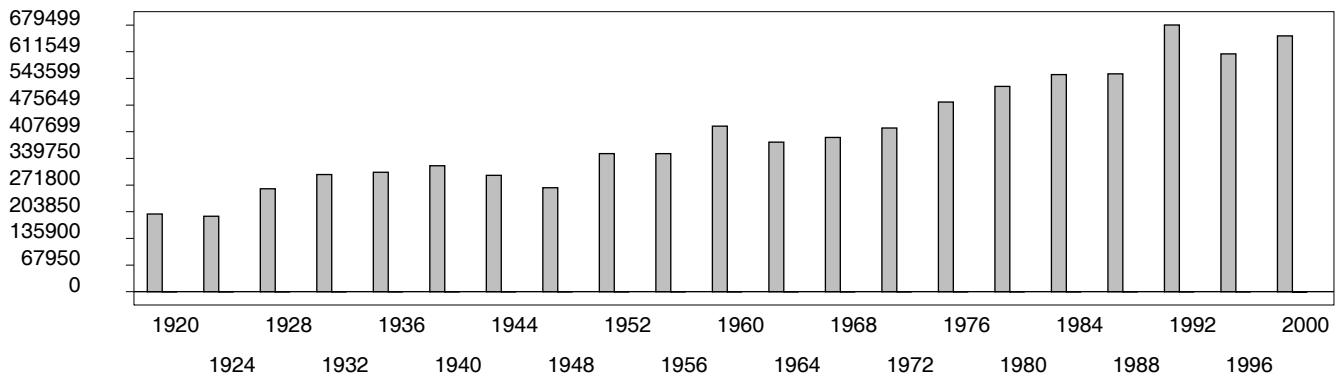


Figure 2. REPUBLICAN %. Refer to GOP-DEX for comparative value.

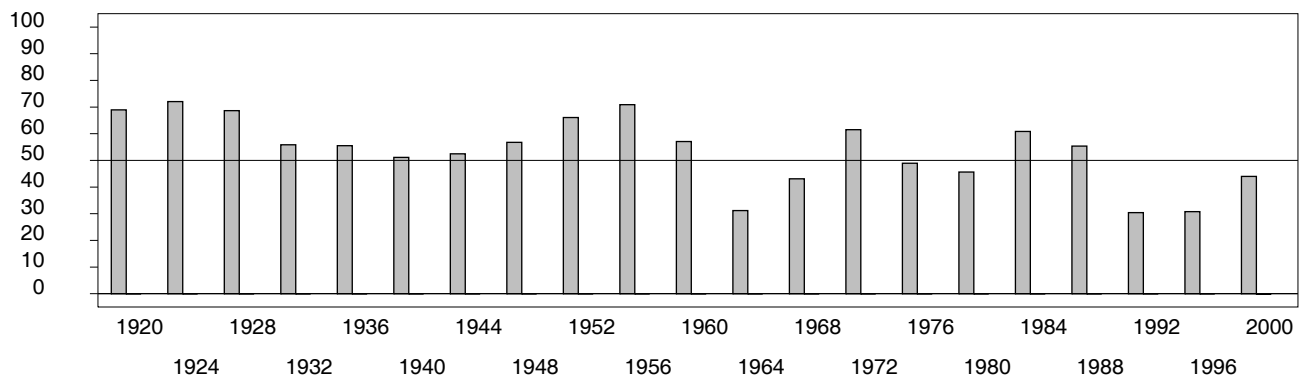
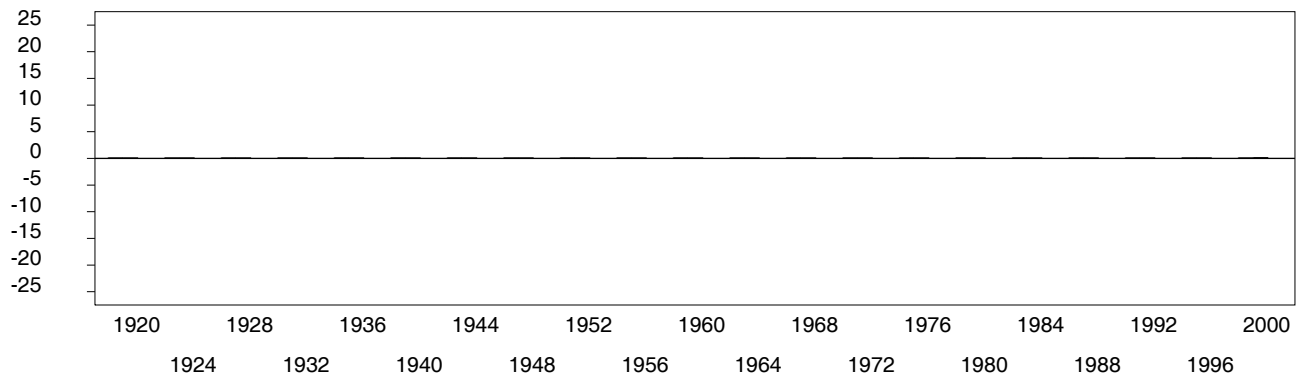


Figure 3. R-DEX: % by which County GOP% is above/below the State GOP%.



1. Statewide Winner in UPPERCASE. Incumbency: * for incumbent, + for party holding seat.

2. BOLDING indicates unit won by REPUBLICANS. Plurality in UPPERCASE indicates unit won with a majority of the vote.

3. Total column may include votes for minor party candidates. An asterisk (*) follows the Total column if it includes votes not listed (see Rem%).

4. % of Marg(in) is Plurality as % of Total Vote. GOP Index (R-Dex) is the percentage (not percentage points) by which GOP% for County is above(+)/below(-) the State GOP%.

5. Order of races is standardized and may not match ballot order. Selected races only; non-competitive lower-ticket races may be omitted.

6. Each race is assigned a specific bar in the graphs. Top of the ticket is darkest bar and is at the left of each year cluster. Races not listed in the history table will result in blank bars.