

Race	Candidate GOP/Dem/Ind	GOP Vote	Dem Vote	Ind Vote	Total Vote	GOP %	Dem %	Ind %	Rem %	Plurality/Win	%of Marg	GOP Index
<b>2002</b>												
Gov	EHRlich/Townsend+	879,592	813,422	0	1,704,560*	51.6	47.7	0.0	0.7	66,170 R	3.9	0.0
<b>2000</b>												
Pres	Bush/GORE+	813,797	1,145,782	0	2,024,000*	40.2	56.6	0.0	3.2	331,985 D	16.4	0.0
Sen	Rappaport/SARBANES*	715,178	1,230,013	0	1,945,191	36.8	63.2	0.0	0.0	514,835 D	26.5	0.0
<b>1998</b>												
Gov	Sauerbrey/GLENDENING*	688,357	846,972	0	1,535,329	44.8	55.2	0.0	0.0	158,615 D	10.3	0.0
Comp	Epstein/SCHAEFER+	565,291	924,053	0	1,489,344	38.0	62.0	0.0	0.0	358,762 D	24.1	0.0
AtG	Rappaport/CURRAN*	531,430	922,655	0	1,454,085	36.6	63.5	0.0	0.0	391,225 D	26.9	0.0
<b>1996</b>												
Pres	Dole/CLINTON*/Perot	681,530	966,207	115,812	1,780,870*	38.3	54.3	6.5	1.0	284,677 D	16.0	0.0
<b>1994</b>												
Sen	Brock/SARBANES*	559,908	809,125	0	1,369,033	40.9	59.1	0.0	0.0	249,217 D	18.2	0.0
Gov	Sauerbrey/GLENDENING+	702,101	708,094	0	1,410,195	49.8	50.2	0.0	0.0	5,993 D	0.4	0.0
Comp	Mayberry/GOLDSTEIN*	516,631	809,852	0	1,326,483	39.0	61.1	0.0	0.0	293,221 D	22.1	0.0
AtG	Bennett/CURRAN*	608,522	703,169	0	1,311,691	46.4	53.6	0.0	0.0	94,647 D	7.2	0.0
<b>1992</b>												
Pres	Bush*/CLINTON/Perot	707,094	988,571	281,414	1,985,046*	35.6	49.8	14.2	0.4	281,477 d	14.2	0.0
<b>1990</b>												
Gov	Shepard/SCHAEFER*	446,980	664,015	0	1,110,995	40.2	59.8	0.0	0.0	217,035 D	19.5	0.0
AtG	Blanton/CURRAN*	355,783	653,087	0	1,008,870	35.3	64.7	0.0	0.0	297,304 D	29.5	0.0
<b>1988</b>												
Pres	BUSH+/Dukakis	876,167	826,304	0	1,714,358*	51.1	48.2	0.0	0.7	49,863 R	2.9	0.0
Sen	Keyes/SARBANES*	617,537	999,166	0	1,616,703	38.2	61.8	0.0	0.0	381,629 D	23.6	0.0
<b>1986</b>												
Sen	Chavez+/MIKULSKI	437,411	675,225	0	1,112,636	39.3	60.7	0.0	0.0	237,814 D	21.4	0.0
Gov	Mooney/SCHAEFER+	194,185	907,291	0	1,101,476	17.6	82.4	0.0	0.0	713,106 D	64.7	0.0
<b>1984</b>												
Pres	REAGAN*/Mondale	879,918	787,935	0	1,675,873*	52.5	47.0	0.0	0.5	91,983 R	5.5	0.0
<b>1982</b>												
Sen	Hogan/SARBANES*	407,334	707,356	0	1,114,690	36.5	63.5	0.0	0.0	300,022 D	26.9	0.0
Gov	Pascal/HUGHES	432,826	705,910	0	1,138,736	38.0	62.0	0.0	0.0	273,084 D	24.0	0.0
<b>1980</b>												
Pres	Reagan/CARTER*/Anderson	680,606	726,161	119,537	1,540,496*	44.2	47.1	7.8	0.9	45,555 d	3.0	0.0

Figure 1. TOTAL VOTES.

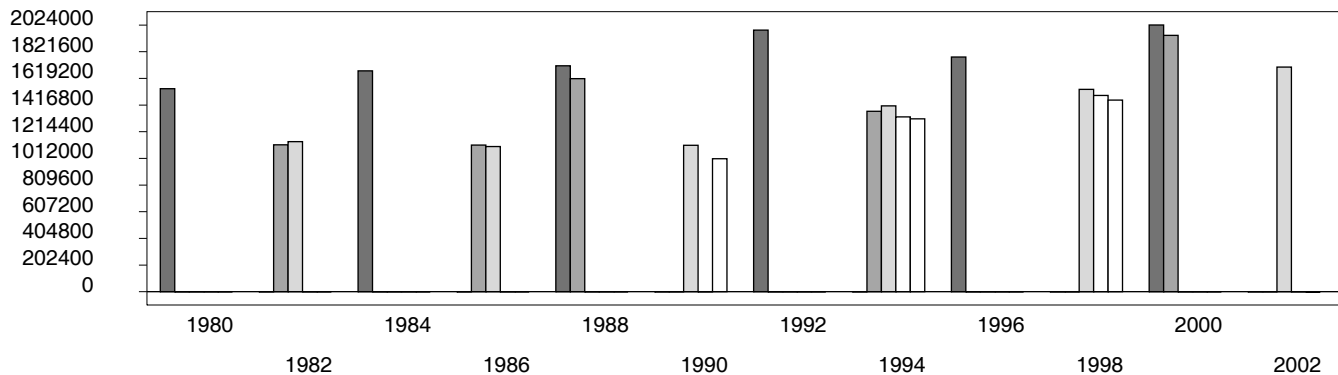


Figure 2. REPUBLICAN %. Refer to GOP-DEX for comparative value.

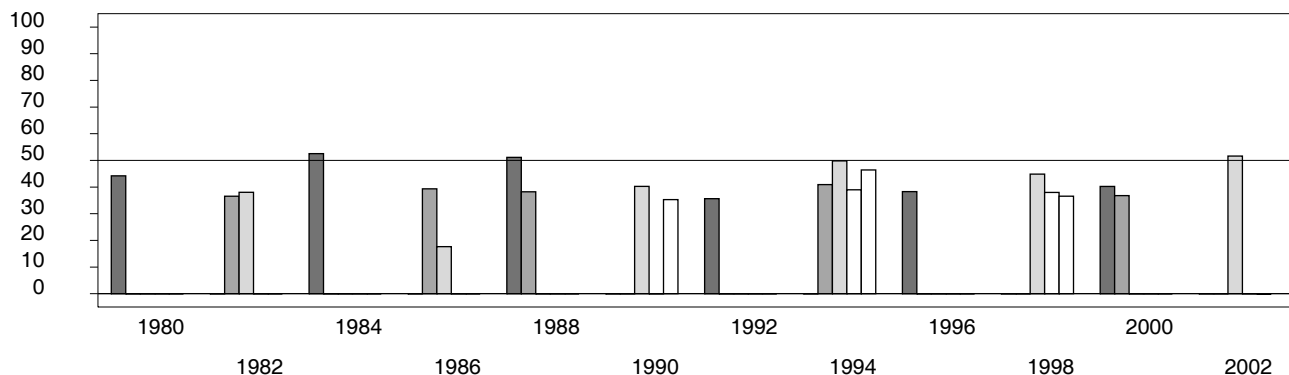


Figure 3. R-DEX: % by which County GOP% is above/below the State GOP%.

