

Race	Candidate GOP/Dem/Ind	GOP Vote	Dem Vote	Ind Vote	Total Vote	GOP %	Dem %	Ind %	Rem %	Plurality/Win	%of Marg	GOP Index
2000												
Pres	Bush/GORE+	813,797	1,145,782	0	2,024,000*	40.2	56.6	0.0	3.2	331,985 D	16.4	0.0
1996												
Pres	Dole/CLINTON*/Perot	681,530	966,207	115,812	1,780,870*	38.3	54.3	6.5	1.0	284,677 D	16.0	0.0
1992												
Pres	Bush*/CLINTON/Perot	707,094	988,571	281,414	1,985,046*	35.6	49.8	14.2	0.4	281,477 d	14.2	0.0
1988												
Pres	BUSH+/Dukakis	876,167	826,304	0	1,714,358*	51.1	48.2	0.0	0.7	49,863 R	2.9	0.0
1984												
Pres	REAGAN*/Mondale	879,918	787,935	0	1,675,873*	52.5	47.0	0.0	0.5	91,983 R	5.5	0.0
1980												
Pres	Reagan/CARTER*/Anderson	680,606	726,161	119,537	1,540,496*	44.2	47.1	7.8	0.9	45,555 d	3.0	0.0
1976												
Pres	Ford+/CARTER	672,661	759,612	0	1,439,897*	46.7	52.8	0.0	0.5	86,951 D	6.0	0.0
1972												
Pres	NIXON/McGovern+	829,305	505,781	0	1,353,812*	61.3	37.4	0.0	1.4	323,524 R	23.9	0.0
1968												
Pres	Nixon/HUMPHREY+/Wallace	517,995	538,310	178,734	1,235,039	41.9	43.6	14.5	0.0	20,315 d	1.7	0.0
1964												
Pres	Goldwater/JOHNSON+	385,495	730,912	0	1,116,457*	34.5	65.5	0.0	0.0	345,417 D	30.9	0.0
1960												
Pres	Nixon+/KENNEDY	489,538	565,808	0	1,055,349*	46.4	53.6	0.0	0.0	76,270 D	7.2	0.0
1956												
Pres	EISENHOWER*/Stevenson	559,738	372,613	0	932,827*	60.0	39.9	0.0	0.0	187,125 R	20.1	0.0
1952												
Pres	EISENHOWER/Stevenson+	499,424	395,337	0	902,074*	55.4	43.8	0.0	0.8	104,087 R	11.5	0.0
1948												
Pres	DEWEY/Truman+	294,814	286,521	0	596,748*	49.4	48.0	0.0	2.6	8,293 r	1.4	0.0
1944												
Pres	Dewey/ROOSEVELT*	292,949	315,490	0	608,439	48.2	51.9	0.0	0.0	22,541 D	3.7	0.0
1940												
Pres	Willkie/ROOSEVELT*	269,534	384,546	0	660,104*	40.8	58.3	0.0	0.9	115,012 D	17.4	0.0
1936												
Pres	Landon/ROOSEVELT*	231,435	389,612	0	624,896*	37.0	62.4	0.0	0.6	158,177 D	25.3	0.0
1932												
Pres	Hoover*/ROOSEVELT	184,184	314,314	0	511,054*	36.0	61.5	0.0	2.5	130,130 D	25.5	0.0
1928												
Pres	HOOVER+/Smith	301,479	223,626	0	528,348*	57.1	42.3	0.0	0.6	77,853 R	14.7	0.0
1924												
Pres	COOLIDGE+/Davis/LaFollet	162,414	148,072	48,144	358,630	45.3	41.3	13.4	0.0	14,342 r	4.0	0.0
1920												
Pres	HARDING/Cox+	236,117	180,626	0	428,443*	55.1	42.2	0.0	2.7	55,491 R	13.0	0.0

POLIDATA © Demographic and Political Guides. All Rights Reserved. Copyright © 2003. www.polidata.us

1. Statewide Winner in UPPERCASE. Incumbency: * for incumbent, + for party holding seat. MD: Lieutenant Governor is elected on same ticket with Governor.

2. BOLDING indicates unit won by REPUBLICANS. Plurality in UPPERCASE indicates unit won with a majority of the vote.

3. Total column may include votes for minor party candidates. An asterisk (*) follows the Total column if it includes votes not listed (see Rem%).

4. % of Marg(in) is Plurality as % of Total Vote. GOP Index (R-Dex) is the percentage (not percentage points) by which GOP% for County is above(+)/below(-) the State GOP%.

5. Order of races is standardized and may not match ballot order. Selected races only; non-competitive lower-ticket races may be omitted.

6. Each race is assigned a specific bar in the graphs. Top of the ticket is darkest bar and is at the left of each year cluster. Races not listed in the history table will result in blank bars.

Figure 1. TOTAL VOTES.

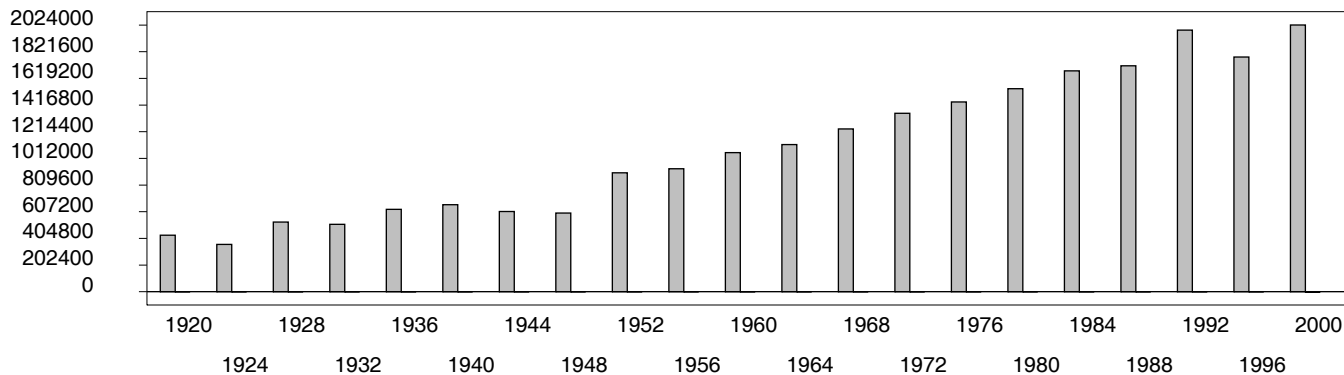


Figure 2. REPUBLICAN %. Refer to GOP-DEX for comparative value.

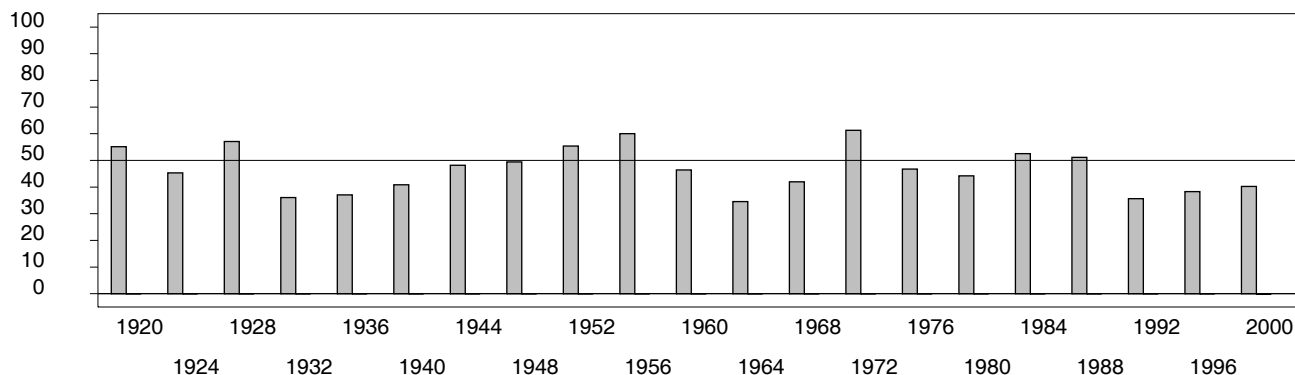


Figure 3. R-DEX: % by which County GOP% is above/below the State GOP%.

