

Race	Candidate GOP/Dem/Ind	GOP Vote	Dem Vote	Ind Vote	Total Vote	GOP %	Dem %	Ind %	Rem %	Plurality/Win	%of Marg	GOP Index
2000												
Pres	Bush/GORE+	878,502	1,616,487	0	2,698,952*	32.6	59.9	0.0	7.6	737,985 D	27.3	0.0
1996												
Pres	Dole/CLINTON*/Perot	718,058	1,571,509	227,206	2,551,836*	28.1	61.6	8.9	1.4	853,451 D	33.4	0.0
1992												
Pres	Bush/CLINTON+/Perot	805,049	1,318,662	630,731	2,773,700*	29.0	47.5	22.7	0.7	513,613 d	18.5	0.0
1988												
Pres	Bush+/DUKAKIS	1,194,635	1,401,415	0	2,632,805*	45.4	53.2	0.0	1.4	206,780 D	7.9	0.0
1984												
Pres	REAGAN*/Mondale	1,310,936	1,239,606	0	2,559,453*	51.2	48.4	0.0	0.4	71,330 R	2.8	0.0
1980												
Pres	REAGAN/Carter*/Anderson	1,057,631	1,053,802	382,539	2,524,298*	41.9	41.8	15.2	1.2	3,829 r	0.2	0.0
1976												
Pres	Ford/CARTER+	1,030,276	1,429,475	0	2,547,558*	40.4	56.1	0.0	3.5	399,199 D	15.7	0.0
1972												
Pres	Nixon/MCGOVERN+	1,112,078	1,332,540	0	2,458,756*	45.2	54.2	0.0	0.6	220,462 D	9.0	0.0
1968												
Pres	Nixon/HUMPHREY+	766,844	1,469,218	87,088	2,331,752*	32.9	63.0	3.7	0.4	702,374 D	30.1	0.0
1964												
Pres	Goldwater/JOHNSON+	549,727	1,786,422	0	2,344,798*	23.4	76.2	0.0	0.4	1,236,695 D	52.8	0.0
1960												
Pres	Nixon+/KENNEDY	976,750	1,487,174	0	2,469,480*	39.6	60.2	0.0	0.2	510,424 D	20.7	0.0
1956												
Pres	EISENHOWER*/Stevenson	1,393,197	948,190	0	2,348,506*	59.3	40.4	0.0	0.3	445,007 R	19.0	0.0
1952												
Pres	EISENHOWER/Stevenson+	1,292,325	1,083,525	0	2,383,398*	54.2	45.5	0.0	0.3	208,800 R	8.8	0.0
1948												
Pres	Dewey/TRUMAN+	909,370	1,151,788	0	2,106,513*	43.2	54.7	0.0	2.2	242,418 D	11.5	0.0
1944												
Pres	Dewey/ROOSEVELT*	921,350	1,035,296	0	1,960,399*	47.0	52.8	0.0	0.2	113,946 D	5.8	0.0
1940												
Pres	Willkie/ROOSEVELT*	939,700	1,076,522	0	2,026,981*	46.4	53.1	0.0	0.5	136,822 D	6.8	0.0
1936												
Pres	Landon/ROOSEVELT*/Lemke	768,613	942,716	129,017	1,840,346	41.8	51.2	7.0	0.0	174,103 D	9.5	0.0
1932												
Pres	Hoover/ROOSEVELT+	736,959	800,148	0	1,580,043*	46.6	50.6	0.0	2.7	63,189 D	4.0	0.0
1928												
Pres	Hoover*/SMITH	775,566	792,758	0	1,577,819*	49.2	50.2	0.0	0.6	17,192 D	1.1	0.0
1924												
Pres	COOLIDGE+/Davis/LaFollet	703,476	280,831	145,528	1,129,835	62.3	24.9	12.9	0.0	422,645 R	37.4	0.0
1920												
Pres	HARDING+/Cox	681,153	276,691	0	993,694*	68.6	27.8	0.0	3.6	404,462 R	40.7	0.0

POLIDATA © Demographic and Political Guides. All Rights Reserved. Copyright © 2003. www.polidata.us

1. Statewide Winner in UPPERCASE. Incumbency: * for incumbent, + for party holding seat.

2. BOLDING indicates unit won by REPUBLICANS. Plurality in UPPERCASE indicates unit won with a majority of the vote.

3. Total column may include votes for minor party candidates. An asterisk (*) follows the Total column if it includes votes not listed (see Rem%).

4. % of Marg(in) is Plurality as % of Total Vote. GOP Index (R-Dex) is the percentage (not percentage points) by which GOP% for County is above(+)/below(-) the State GOP%.

5. Order of races is standardized and may not match ballot order. Selected races only; non-competitive lower-ticket races may be omitted.

6. Each race is assigned a specific bar in the graphs. Top of the ticket is darkest bar and is at the left of each year cluster. Races not listed in the history table will result in blank bars.

Figure 1. TOTAL VOTES.

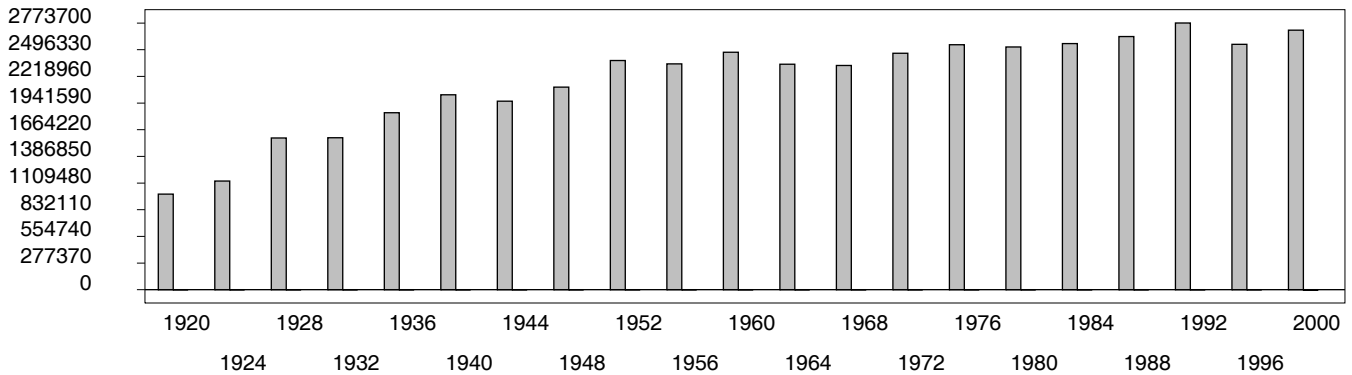


Figure 2. REPUBLICAN %. Refer to GOP-DEX for comparative value.

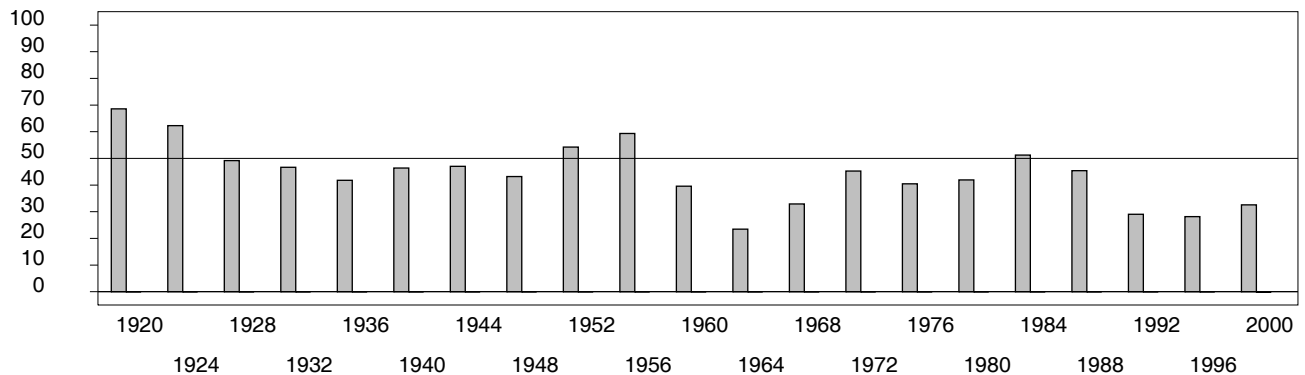
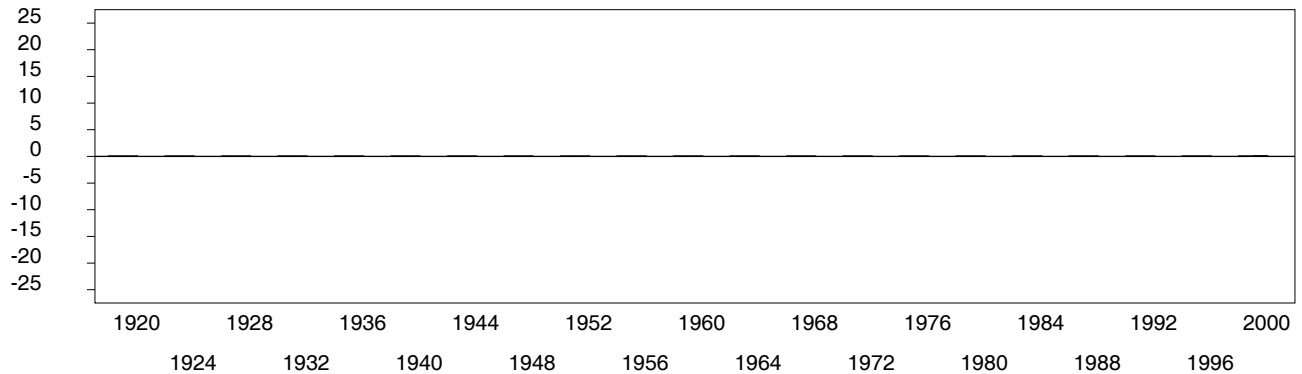


Figure 3. R-DEX: % by which County GOP% is above/below the State GOP%.



1. Statewide Winner in UPPERCASE. Incumbency: * for incumbent, + for party holding seat.

2. BOLDING indicates unit won by REPUBLICANS. Plurality in UPPERCASE indicates unit won with a majority of the vote.

3. Total column may include votes for minor party candidates. An asterisk (*) follows the Total column if it includes votes not listed (see Rem%).

4. % of Marg(in) is Plurality as % of Total Vote. GOP Index (R-Dex) is the percentage (not percentage points) by which GOP% for County is above(+)/below(-) the State GOP%.

5. Order of races is standardized and may not match ballot order. Selected races only; non-competitive lower-ticket races may be omitted.

6. Each race is assigned a specific bar in the graphs. Top of the ticket is darkest bar and is at the left of each year cluster. Races not listed in the history table will result in blank bars.