

Race	Candidate GOP/Dem/Ind	GOP Vote	Dem Vote	Ind Vote	Total Vote	GOP %	Dem %	Ind %	Rem %	Plurality/Win	%of Marg	GOP Index	
2002													
Sen	Raczkowski/LEVIN*	1,185,545	1,896,614	0	3,129,287*	37.9	60.6	0.0	1.5	711,069	D	22.7	0.0
Gov	Posthumus+/GRANHOLM	1,506,104	1,633,796	0	3,177,547*	47.4	51.4	0.0	1.2	127,692	D	4.0	0.0
Sec	LAND+/Hollowell	1,703,261	1,331,441	0	3,099,206*	55.0	43.0	0.0	2.1	371,820	R	12.0	0.0
AtG	COX/Peters+	1,499,066	1,493,866	0	3,068,012*	48.9	48.7	0.0	2.5	5,200	r	0.2	0.0
BdEd	Curtin/BAUER	1,292,059	1,404,448	0	2,914,371*	44.3	48.2	0.0	7.5	112,389	d	3.9	0.0
UMR	NEWMAN/Stephens	1,418,707	1,274,687	0	3,017,135*	47.0	42.3	0.0	10.7	144,020	r	4.8	0.0
MST	Nugent/MCNAMEARA	1,321,332	1,418,561	0	2,874,729*	46.0	49.4	0.0	4.7	97,229	d	3.4	0.0
WSG	DUNASKISS/Bernstein	1,330,397	1,257,725	0	2,828,918*	47.0	44.5	0.0	8.5	72,672	r	2.6	0.0
2000													
Pres	Bush/GORE+	1,953,139	2,170,418	0	4,232,501*	46.2	51.3	0.0	2.6	217,279	D	5.1	0.0
Sen	Abraham*/STABENOW	1,994,693	2,061,952	0	4,167,685*	47.9	49.5	0.0	2.7	67,259	d	1.6	0.0
BdEd	Land/AUSTIN	1,617,393	1,871,348	0	3,769,860*	42.9	49.6	0.0	7.5	253,955	d	6.7	0.0
UMR	Anderson/MCGOWAN	1,605,188	1,825,556	0	3,719,856*	43.2	49.1	0.0	7.8	220,368	d	5.9	0.0
MST	Romney/GONZALES	1,719,103	1,811,200	0	3,739,304*	46.0	48.4	0.0	5.6	92,097	d	2.5	0.0
WSG	Kelly/WASHINGTON	1,629,028	1,714,824	0	3,614,437*	45.1	47.4	0.0	7.5	85,796	d	2.4	0.0
1998													
Gov	ENGLER*/Fieger	1,883,005	1,143,574	0	3,026,579	62.2	37.8	0.0	0.0	739,431	R	24.4	0.0
AtG	Smietanka/GRANHOLM+	1,432,604	1,557,310	0	2,989,914	47.9	52.1	0.0	0.0	124,706	D	4.2	0.0
BdEd	Weiser/GIRE	1,277,526	1,279,890	0	2,729,261*	46.8	46.9	0.0	6.3	2,364	d	0.1	0.0
UMR	Brandon/WHITE	1,291,846	1,303,860	0	2,780,640*	46.5	46.9	0.0	6.7	12,014	d	0.4	0.0
MST	COOK/Sims	1,296,695	1,233,584	0	2,662,475*	48.7	46.3	0.0	5.0	63,111	r	2.4	0.0
WSG	HARDY/Kelly	1,301,118	1,292,514	0	2,727,054*	47.7	47.4	0.0	4.9	8,604	r	0.3	0.0
1996													
Pres	Dole/CLINTON*/Perot	1,481,212	1,989,653	336,670	3,848,844*	38.5	51.7	8.8	1.1	508,441	D	13.2	0.0
Sen	Romney/LEVIN*	1,500,106	2,195,738	0	3,762,575*	39.9	58.4	0.0	1.8	695,632	D	18.5	0.0
BdEd	Lundy/MCGUIRE	1,494,593	1,724,264	0	3,420,275*	43.7	50.4	0.0	5.9	229,671	D	6.7	0.0
UMR	Baker/MAYNARD	1,458,027	1,723,938	0	3,356,177*	43.4	51.4	0.0	5.2	265,911	D	7.9	0.0
MST	Pero/FERGUSON	1,444,667	1,633,820	0	3,306,204*	43.7	49.4	0.0	6.9	189,153	d	5.7	0.0
WSG	Anthony/MILLER	1,348,665	1,666,029	0	3,207,318*	42.1	51.9	0.0	6.0	317,364	D	9.9	0.0
1994													
Sen	ABRAHAM/Carr+	1,578,770	1,300,960	0	3,042,879*	51.9	42.8	0.0	5.4	277,810	R	9.1	0.0
Gov	ENGLER*/Wolpe	1,899,101	1,188,438	0	3,087,539	61.5	38.5	0.0	0.0	710,663	R	23.0	0.0
Sec	MILLER/Austin*	1,634,398	1,416,865	0	3,051,263	53.6	46.4	0.0	0.0	217,533	R	7.1	0.0
AtG	Smietanka/KELLEY*	1,273,330	1,717,591	0	2,990,921	42.6	57.4	0.0	0.0	444,261	D	14.9	0.0
BdEd	WISE/Thomas	1,401,738	1,281,265	0	2,879,386*	48.7	44.5	0.0	6.8	120,473	r	4.2	0.0
UMR	FISCHER/Brown	1,402,029	1,180,395	0	2,758,308*	50.8	42.8	0.0	6.4	221,634	R	8.0	0.0
MST	NUGENT/McNamara	1,307,431	1,285,670	0	2,752,806*	47.5	46.7	0.0	5.8	21,761	r	0.8	0.0
WSG	DUNASKISS/Atchison	1,388,501	1,168,585	0	2,661,340*	52.2	43.9	0.0	3.9	219,916	R	8.3	0.0
1992													
Pres	Bush*/CLINTON/Perot	1,554,940	1,871,182	824,813	4,274,673*	36.4	43.8	19.3	0.6	316,242	d	7.4	0.0
BdEd	Beardmore/STRAUS	1,618,653	1,872,393	0	3,824,428*	42.3	49.0	0.0	8.7	253,740	d	6.6	0.0
UMR	Laro/MCGOWAN	1,552,384	1,846,284	0	3,651,701*	42.5	50.6	0.0	6.9	293,900	D	8.1	0.0
MST	Reinhold/GONZALES	1,598,904	1,818,594	0	3,524,876*	45.4	51.6	0.0	3.1	219,690	D	6.2	0.0
WSG	Bashara/LEWIS	1,453,145	1,803,894	0	3,507,900*	41.4	51.4	0.0	7.2	350,749	D	10.0	0.0
1990													
Sen	Schuettle/LEVIN*	1,055,695	1,471,753	0	2,560,244*	41.2	57.5	0.0	1.3	416,058	D	16.3	0.0
Gov	ENGLER/Blanchard*	1,276,134	1,258,539	0	2,562,764*	49.8	49.1	0.0	1.1	17,595	r	0.7	0.0
Sec	Miller/AUSTIN*	981,027	1,511,095	0	2,492,122	39.4	60.6	0.0	0.0	530,068	D	21.3	0.0
AtG	Taylor/KELLEY*	890,925	1,565,686	0	2,456,611	36.3	63.7	0.0	0.0	674,761	D	27.5	0.0
BdEd	DeVos/MASON	1,023,578	1,131,990	0	2,412,993*	42.4	46.9	0.0	10.7	108,412	d	4.5	0.0
UMR	MCREE/Power	1,060,036	1,038,610	0	2,208,447*	48.0	47.0	0.0	5.0	21,426	r	1.0	0.0
MST	COOK/Owen	1,059,443	1,003,306	0	2,184,690*	48.5	45.9	0.0	5.6	56,137	r	2.6	0.0
WSG	Hardy/SCOTT	1,000,445	1,014,076	0	2,168,520*	46.1	46.8	0.0	7.1	13,631	d	0.6	0.0
1988													
Pres	BUSH+/Dukakis	1,965,486	1,675,783	0	3,669,163*	53.6	45.7	0.0	0.8	289,703	R	7.9	0.0
Sen	Dunn/RIEGLER*	1,348,219	2,116,865	0	3,505,929*	38.5	60.4	0.0	1.2	768,646	D	21.9	0.0

POLIDATA © Demographic and Political Guides. All Rights Reserved. Copyright © 2003. www.polidata.us

1. Statewide Winner in UPPERCASE. Incumbency: * for incumbent, + for party holding seat. MI: Lieutenant Governor is elected on same ticket with Governor.
2. BOLDING indicates unit won by REPUBLICANS. Plurality in UPPERCASE indicates unit won with a majority of the vote. MI: See Notes for Multimember races.
3. Total column may include votes for minor party candidates. An asterisk (*) follows the Total column if it includes votes not listed (see Rem%).
4. % of Marg(in) is Plurality as % of Total Vote. GOP Index (R-Dex) is the percentage (not percentage points) by which GOP% for County is above(+)/below(-) the State GOP%.
5. Order of races is standardized and may not match ballot order. Selected races only; non-competitive lower-ticket races may be omitted.
6. Each race is assigned a specific bar in the graphs. Top of the ticket is darkest bar and is at the left of each year cluster. Races not listed in the history table will result in blank bars.

Figure 1. TOTAL VOTES.

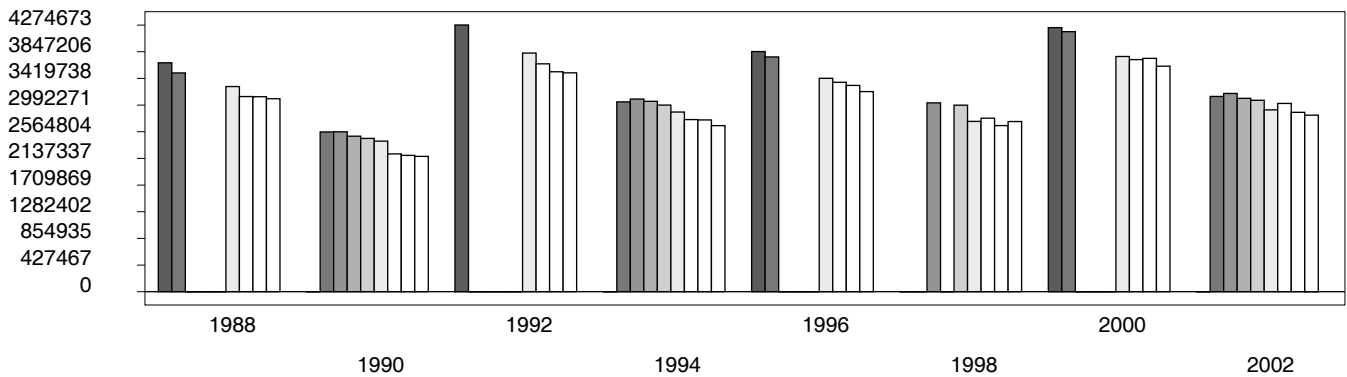


Figure 2. REPUBLICAN %. Refer to GOP-DEX for comparative value.

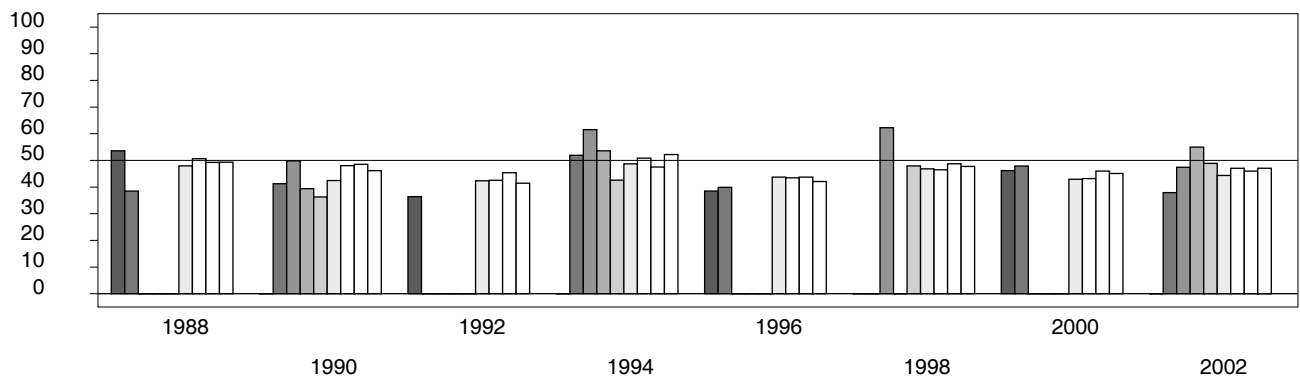


Figure 3. R-DEX: % by which County GOP% is above/below the State GOP%.

