

Race	Candidate GOP/Dem/Ind	GOP Vote	Dem Vote	Ind Vote	Total Vote	GOP %	Dem %	Ind %	Rem %	Plurality/Win	%of Marg	GOP Index
<b>2000</b>												
Pres	Bush/GORE+	1,953,139	2,170,418	0	4,232,501*	46.2	51.3	0.0	2.6	217,279 D	5.1	0.0
<b>1996</b>												
Pres	Dole/CLINTON*/Perot	1,481,212	1,989,653	336,670	3,848,844*	38.5	51.7	8.8	1.1	508,441 D	13.2	0.0
<b>1992</b>												
Pres	Bush*/CLINTON/Perot	1,554,940	1,871,182	824,813	4,274,673*	36.4	43.8	19.3	0.6	316,242 d	7.4	0.0
<b>1988</b>												
Pres	BUSH+/Dukakis	1,965,486	1,675,783	0	3,669,163*	53.6	45.7	0.0	0.8	289,703 R	7.9	0.0
<b>1984</b>												
Pres	REAGAN*/Mondale	2,251,571	1,529,638	0	3,801,658*	59.2	40.2	0.0	0.5	721,933 R	19.0	0.0
<b>1980</b>												
Pres	REAGAN+/Carter/Anderson	1,915,225	1,661,532	275,223	3,909,725*	49.0	42.5	7.0	1.5	253,693 r	6.5	0.0
<b>1976</b>												
Pres	FORD+/Carter	1,893,742	1,696,714	0	3,653,749*	51.8	46.4	0.0	1.7	197,028 R	5.4	0.0
<b>1972</b>												
Pres	NIXON/McGovern+	1,961,721	1,459,435	0	3,489,727*	56.2	41.8	0.0	2.0	502,286 R	14.4	0.0
<b>1968</b>												
Pres	Nixon/HUMPHREY+/Wallace	1,370,665	1,593,082	331,968	3,306,250*	41.5	48.2	10.0	0.3	222,417 d	6.7	0.0
<b>1964</b>												
Pres	Goldwater/JOHNSON+	1,060,152	2,136,615	0	3,203,102*	33.1	66.7	0.0	0.2	1,076,463 D	33.6	0.0
<b>1960</b>												
Pres	Nixon+/KENNEDY	1,620,428	1,687,269	0	3,318,097*	48.8	50.9	0.0	0.3	66,841 D	2.0	0.0
<b>1956</b>												
Pres	EISENHOWER*/Stevenson	1,713,647	1,359,898	0	3,080,468*	55.6	44.2	0.0	0.2	353,749 R	11.5	0.0
<b>1952</b>												
Pres	EISENHOWER+/Stevenson	1,551,529	1,230,657	0	2,798,592*	55.4	44.0	0.0	0.6	320,872 R	11.5	0.0
<b>1948</b>												
Pres	DEWEY/Truman+	1,038,595	1,003,448	0	2,109,609*	49.2	47.6	0.0	3.2	35,147 r	1.7	0.0
<b>1944</b>												
Pres	Dewey+/ROOSEVELT	1,084,423	1,106,899	0	2,205,223*	49.2	50.2	0.0	0.6	22,476 D	1.0	0.0
<b>1940</b>												
Pres	WILLKIE/Roosevelt*	1,039,917	1,032,991	0	2,085,929*	49.9	49.5	0.0	0.6	6,926 r	0.3	0.0
<b>1936</b>												
Pres	Landon/ROOSEVELT*	699,733	1,016,794	0	1,805,098*	38.8	56.3	0.0	4.9	317,061 D	17.6	0.0
<b>1932</b>												
Pres	Hoover*/ROOSEVELT	739,894	871,700	0	1,664,765*	44.4	52.4	0.0	3.2	131,806 D	7.9	0.0
<b>1928</b>												
Pres	HOOVER+/Smith	965,396	396,762	0	1,372,082*	70.4	28.9	0.0	0.7	568,634 R	41.4	0.0
<b>1924</b>												
Pres	COOLIDGE+/Davis/LaFollet	874,631	152,359	133,429	1,160,419	75.4	13.1	11.5	0.0	722,272 R	62.2	0.0
<b>1920</b>												
Pres	HARDING+/Cox	762,865	233,450	0	1,048,411*	72.8	22.3	0.0	5.0	529,415 R	50.5	0.0

POLIDATA © Demographic and Political Guides. All Rights Reserved. Copyright © 2003. www.polidata.us

1. Statewide Winner in UPPERCASE. Incumbency: \* for incumbent, + for party holding seat. MI: Lieutenant Governor is elected on same ticket with Governor.
2. BOLDING indicates unit won by REPUBLICANS. Plurality in UPPERCASE indicates unit won with a majority of the vote. MI: See Notes for Multimember races.
3. Total column may include votes for minor party candidates. An asterisk (\*) follows the Total column if it includes votes not listed (see Rem%).
4. % of Marg(in) is Plurality as % of Total Vote. GOP Index (R-Dex) is the percentage (not percentage points) by which GOP% for County is above(+)/below(-) the State GOP%.
5. Order of races is standardized and may not match ballot order. Selected races only; non-competitive lower-ticket races may be omitted.
6. Each race is assigned a specific bar in the graphs. Top of the ticket is darkest bar and is at the left of each year cluster. Races not listed in the history table will result in blank bars.

Figure 1. TOTAL VOTES.

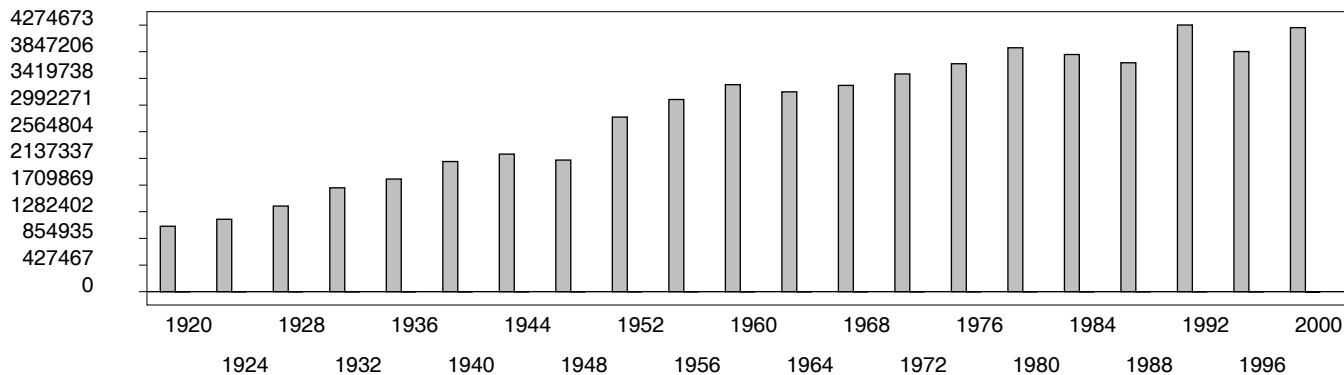


Figure 2. REPUBLICAN %. Refer to GOP-DEX for comparative value.

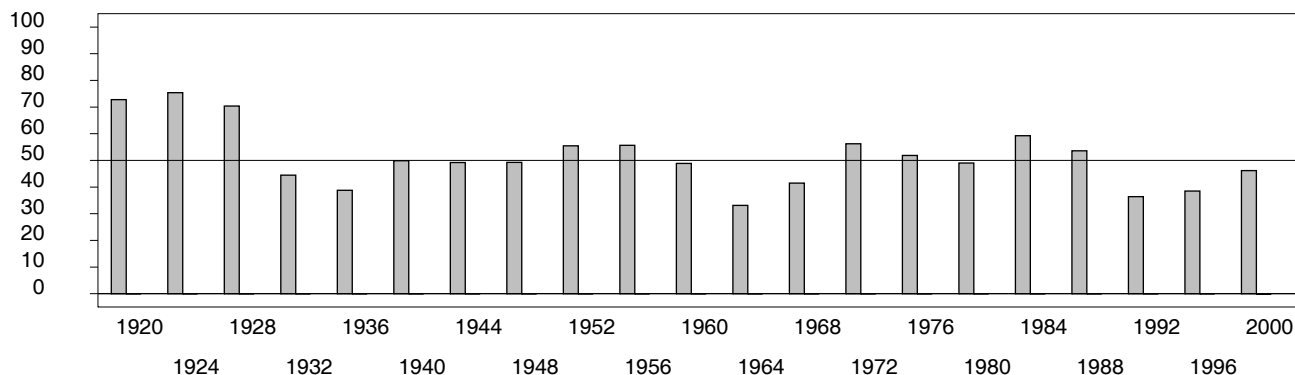


Figure 3. R-DEX: % by which County GOP% is above/below the State GOP%.



1. Statewide Winner in UPPERCASE. Incumbency: \* for incumbent, + for party holding seat. MI: Lieutenant Governor is elected on same ticket with Governor.
2. BOLDING indicates unit won by REPUBLICANS. Plurality in UPPERCASE indicates unit won with a majority of the vote. MI: See Notes for Multimember races.
3. Total column may include votes for minor party candidates. An asterisk (\*) follows the Total column if it includes votes not listed (see Rem%).
4. % of Marg(in) is Plurality as % of Total Vote. GOP Index (R-Dex) is the percentage (not percentage points) by which GOP% for County is above(+)/below(-) the State GOP%.
5. Order of races is standardized and may not match ballot order. Selected races only; non-competitive lower-ticket races may be omitted.
6. Each race is assigned a specific bar in the graphs. Top of the ticket is darkest bar and is at the left of each year cluster. Races not listed in the history table will result in blank bars.

[26000VHB-psvhcy21-CH10]