

Race	Candidate GOP/Dem/Ind	GOP Vote	Dem Vote	Ind Vote	Total Vote	GOP %	Dem %	Ind %	Rem %	Plurality/Win	%of Marg	GOP Index
2002												
Sen	COLEMAN/Mondale+	1,116,697	1,067,246	0	2,250,582*	49.6	47.4	0.0	3.0	49,451 r	2.2	0.0
Gov	PAWLENTY/Moe/Penny	999,473	821,268	364,534	2,251,125*	44.4	36.5	16.2	2.9	178,205 r	7.9	0.0
Sec	KIFFMEYER*/Humphrey	1,040,739	974,045	104,799	2,186,987*	47.6	44.5	4.8	3.1	66,694 r	3.1	0.0
Aud	AWADA+/Johnson/Hutcheson	956,104	941,129	164,532	2,140,376*	44.7	44.0	7.7	3.7	14,975 r	0.7	0.0
AtG	Kelly/HATCH*	894,654	1,197,362	96,817	2,188,833	40.9	54.7	4.4	0.0	302,708 D	13.8	0.0
2000												
Pres	Bush/GORE+	1,109,659	1,168,266	0	2,437,635*	45.5	47.9	0.0	6.6	58,607 d	2.4	0.0
Sen	Grams*/DAYTON/Gibson	1,047,474	1,181,553	140,583	2,419,516*	43.3	48.8	5.8	2.1	134,079 d	5.5	0.0
1998												
Gov	Coleman+/Humphrey/VENTUR	716,880	587,060	773,403	2,089,742*	34.3	28.1	37.0	0.6	56,523 o	2.7	0.0
Sec	KIFFMEYER/Garcia+/Shilep	928,156	817,607	192,898	1,983,324*	46.8	41.2	9.7	2.3	110,549 r	5.6	0.0
Aud	DUTCHER*/Larson/Becker	967,590	812,347	116,578	1,970,250*	49.1	41.2	5.9	3.7	155,243 r	7.9	0.0
Trs	Knight/JOHNSON+/Dunlop	791,723	887,025	235,109	1,951,712*	40.6	45.5	12.1	1.9	95,302 d	4.9	0.0
AtG	Weaver/HATCH+/Mangan	879,864	960,048	116,481	2,005,566*	43.9	47.9	5.8	2.5	80,184 d	4.0	0.0
1996												
Pres	Dole/CLINTON*/Perot	766,476	1,120,438	257,704	2,192,640*	35.0	51.1	11.8	2.2	353,962 D	16.1	0.0
Sen	Boschwitz/WELLSTONE*/Bar	901,282	1,098,493	152,333	2,183,062*	41.3	50.3	7.0	1.4	197,211 D	9.0	0.0
1994												
Sen	GRAMS+/Wynia/Barkley	869,653	781,860	95,400	1,770,315*	49.1	44.2	5.4	1.3	87,793 r	5.0	0.0
Gov	CARLSON*/Marty	1,094,165	589,344	0	1,727,394*	63.3	34.1	0.0	2.5	504,821 R	29.2	0.0
Sec	Kimble/GROWE*	636,676	1,038,455	0	1,729,140*	36.8	60.1	0.0	3.1	401,779 D	23.2	0.0
Aud	DUTCHER/Moe+	836,626	768,630	0	1,686,067*	49.6	45.6	0.0	4.8	67,996 r	4.0	0.0
Trs	Olson/MCGRATH*/Bonniwell	759,255	779,658	84,486	1,623,399	46.8	48.0	5.2	0.0	20,403 d	1.3	0.0
1992												
Pres	Bush/CLINTON+/Perot	747,841	1,020,997	562,506	2,347,948*	31.9	43.5	24.0	0.7	273,156 d	11.6	0.0
1990												
Sen	Boschwitz*/WELLSTONE	864,375	911,999	0	1,806,194*	47.9	50.5	0.0	1.7	47,624 D	2.6	0.0
Gov	CARLSON/Perpich*	895,988	836,218	0	1,788,163*	50.1	46.8	0.0	3.1	59,770 R	3.4	0.0
Sec	Jennings/GROWE*	626,199	1,094,696	0	1,764,707*	35.5	62.0	0.0	2.5	468,497 D	26.6	0.0
Aud	Heinrich+/DAYTON	743,389	1,011,124	0	1,754,513	42.4	57.6	0.0	0.0	267,735 D	15.3	0.0
Trs	Burger/MCGRATH*	728,832	906,710	0	1,720,456*	42.4	52.7	0.0	4.9	177,878 D	10.3	0.0
AtG	Johnson/HUMPHREY*	655,282	1,126,447	0	1,781,729	36.8	63.2	0.0	0.0	471,165 D	26.4	0.0
1988												
Pres	Bush/DUKAKIS+	962,337	1,109,471	0	2,096,790*	45.9	52.9	0.0	1.2	147,134 D	7.0	0.0
Sen	DURENBERGER*/Humphrey	1,176,210	856,694	0	2,093,538*	56.2	40.9	0.0	2.9	319,516 R	15.3	0.0
1986												
Gov	Ludeman/PERPICH*	606,755	790,138	0	1,408,104*	43.1	56.1	0.0	0.8	183,383 D	13.0	0.0
Aud	CARLSON*/Dooley	747,219	608,913	0	1,356,132	55.1	44.9	0.0	0.0	138,306 R	10.2	0.0
Trs	Drew/MCGRATH+	589,507	741,144	0	1,344,468*	43.9	55.1	0.0	1.0	151,637 D	11.3	0.0
1984												
Pres	Reagan/MONDALE+	1,032,603	1,036,364	0	2,084,449*	49.5	49.7	0.0	0.7	3,761 d	0.2	0.0
Sen	BOSCHWITZ*/Grove	1,199,926	852,844	13,133	2,065,903	58.1	41.3	0.6	0.0	347,082 R	16.8	0.0
1982												
Sen	DURENBERGER/Dayton+	949,207	840,401	0	1,804,675*	52.6	46.6	0.0	0.8	108,806 R	6.0	0.0
Gov	Whitney+/PERPICH	715,796	1,049,104	0	1,789,539*	40.0	58.6	0.0	1.4	333,308 D	18.6	0.0
Sec	Hanson/GROWE*	673,011	1,028,792	0	1,733,225*	38.8	59.4	0.0	1.8	355,781 D	20.5	0.0
Aud	CARLSON*/Wellstone	932,925	769,254	0	1,702,179	54.8	45.2	0.0	0.0	163,671 R	9.6	0.0
Trs	Clayton/MATTSON+	722,332	914,788	0	1,665,251*	43.4	54.9	0.0	1.7	192,456 D	11.6	0.0
AtG	Rothenberg/HUMPHREY+	653,162	1,082,539	0	1,753,979*	37.2	61.7	0.0	1.0	429,377 D	24.5	0.0

POLIDATA © Demographic and Political Guides. All Rights Reserved. Copyright © 2003. www.polidata.us

1. Statewide Winner in UPPERCASE. Incumbency: * for incumbent, + for party holding seat.

2. BOLDING indicates unit won by REPUBLICANS. Plurality in UPPERCASE indicates unit won with a majority of the vote.

3. Total column may include votes for minor party candidates. An asterisk (*) follows the Total column if it includes votes not listed (see Rem%).

4. % of Marg(in) is Plurality as % of Total Vote. GOP Index (R-Dex) is the percentage (not percentage points) by which GOP% for County is above(+)/below(-) the State GOP%.

5. Order of races is standardized and may not match ballot order. Selected races only; non-competitive lower-ticket races may be omitted.

6. Each race is assigned a specific bar in the graphs. Top of the ticket is darkest bar and is at the left of each year cluster. Races not listed in the history table will result in blank bars.

Figure 1. TOTAL VOTES.

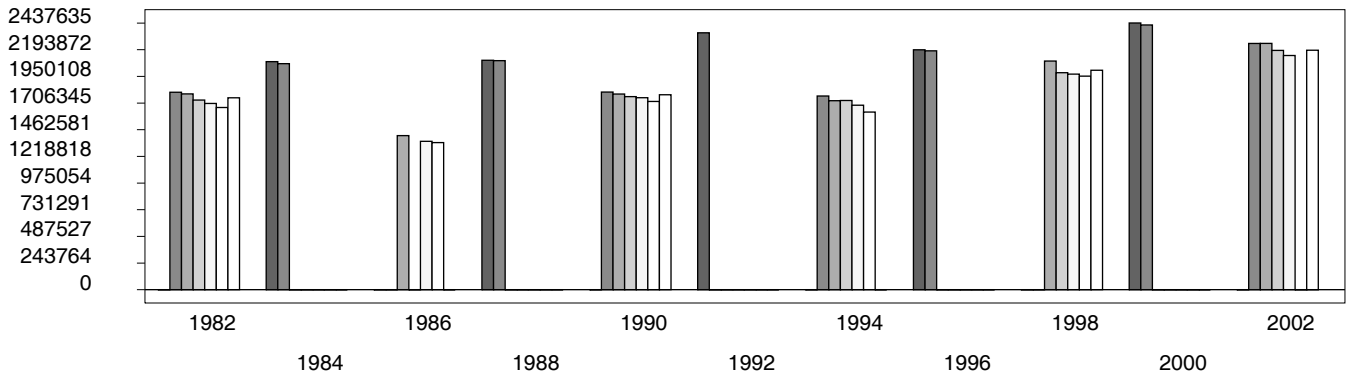


Figure 2. REPUBLICAN %. Refer to GOP-DEX for comparative value.

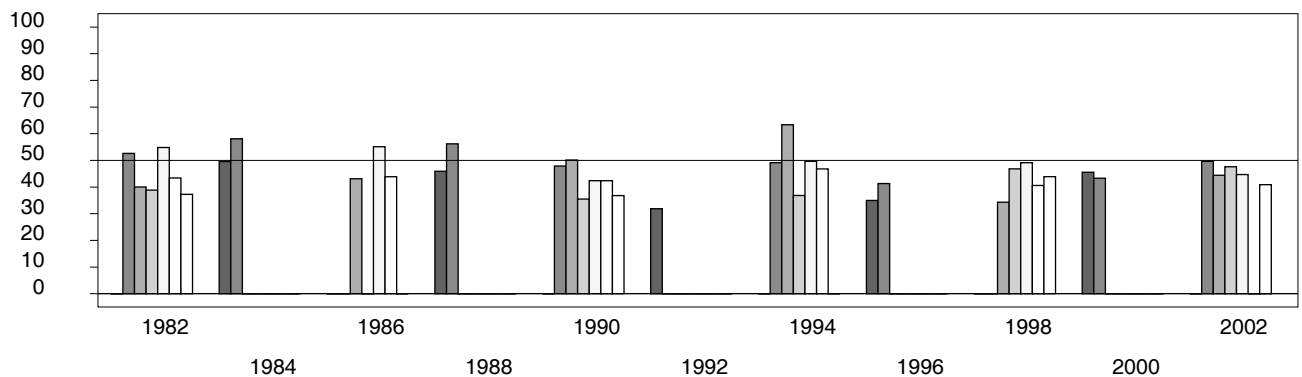
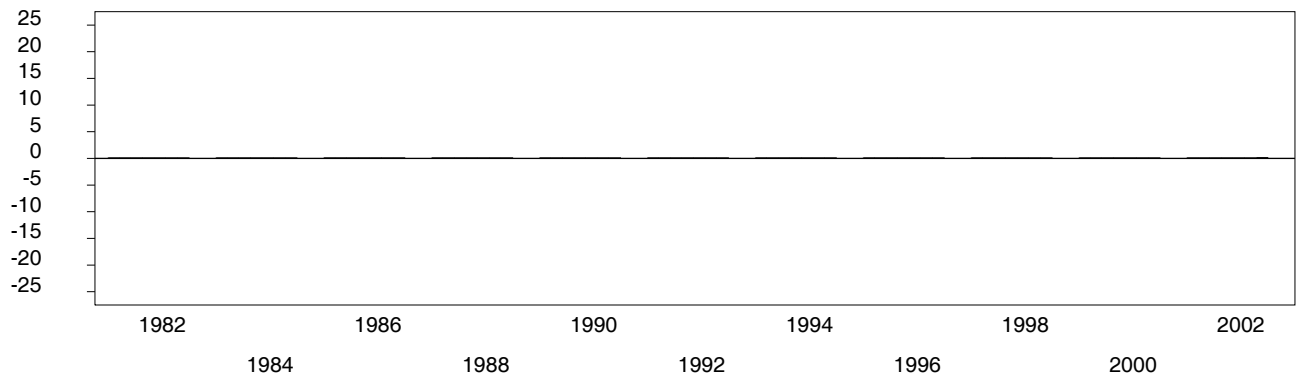


Figure 3. R-DEX: % by which County GOP% is above/below the State GOP%.



1. Statewide Winner in UPPERCASE. Incumbency: * for incumbent, + for party holding seat.

2. BOLDING indicates unit won by REPUBLICANS. Plurality in UPPERCASE indicates unit won with a majority of the vote.

3. Total column may include votes for minor party candidates. An asterisk (*) follows the Total column if it includes votes not listed (see Rem%).

4. % of Marg(in) is Plurality as % of Total Vote. GOP Index (R-Dex) is the percentage (not percentage points) by which GOP% for County is above(+)/below(-) the State GOP%.

5. Order of races is standardized and may not match ballot order. Selected races only; non-competitive lower-ticket races may be omitted.

6. Each race is assigned a specific bar in the graphs. Top of the ticket is darkest bar and is at the left of each year cluster. Races not listed in the history table will result in blank bars.