

Race	Candidate GOP/Dem/Ind	GOP Vote	Dem Vote	Ind Vote	Total Vote	GOP %	Dem %	Ind %	Rem %	Plurality/Win	%of Marg	GOP Index
2000												
Pres	Bush/GORE+	1,109,659	1,168,266	0	2,437,635*	45.5	47.9	0.0	6.6	58,607 d	2.4	0.0
1996												
Pres	Dole/CLINTON*/Perot	766,476	1,120,438	257,704	2,192,640*	35.0	51.1	11.8	2.2	353,962 D	16.1	0.0
1992												
Pres	Bush/CLINTON+/Perot	747,841	1,020,997	562,506	2,347,948*	31.9	43.5	24.0	0.7	273,156 d	11.6	0.0
1988												
Pres	Bush/DUKAKIS+	962,337	1,109,471	0	2,096,790*	45.9	52.9	0.0	1.2	147,134 D	7.0	0.0
1984												
Pres	Reagan/MONDALE+	1,032,603	1,036,364	0	2,084,449*	49.5	49.7	0.0	0.7	3,761 d	0.2	0.0
1980												
Pres	Reagan/CARTER*/Anderson	873,268	954,174	174,990	2,051,980*	42.6	46.5	8.5	2.4	80,906 d	3.9	0.0
1976												
Pres	Ford+/CARTER	819,395	1,070,440	0	1,949,931*	42.0	54.9	0.0	3.1	251,045 D	12.9	0.0
1972												
Pres	NIXON/McGovern+	898,269	802,346	0	1,741,652*	51.6	46.1	0.0	2.4	95,923 R	5.5	0.0
1968												
Pres	Nixon/HUMPHREY+	658,643	857,738	68,931	1,588,506*	41.5	54.0	4.3	0.2	199,095 D	12.5	0.0
1964												
Pres	Goldwater/JOHNSON+	559,624	991,117	0	1,554,462*	36.0	63.8	0.0	0.2	431,493 D	27.8	0.0
1960												
Pres	Nixon+/KENNEDY	757,915	779,933	0	1,541,887*	49.2	50.6	0.0	0.3	22,018 D	1.4	0.0
1956												
Pres	EISENHOWER*/Stevenson	719,302	617,525	0	1,340,005*	53.7	46.1	0.0	0.2	101,777 R	7.6	0.0
1952												
Pres	EISENHOWER/Stevenson+	763,211	608,458	0	1,379,483*	55.3	44.1	0.0	0.6	154,753 R	11.2	0.0
1948												
Pres	Dewey/TRUMAN+	483,617	692,966	0	1,212,226*	39.9	57.2	0.0	2.9	209,349 D	17.3	0.0
1944												
Pres	Dewey/ROOSEVELT*	527,416	589,864	0	1,125,504*	46.9	52.4	0.0	0.7	62,448 D	5.6	0.0
1940												
Pres	Willkie/ROOSEVELT*	596,274	644,196	0	1,251,188*	47.7	51.5	0.0	0.9	47,922 D	3.8	0.0
1936												
Pres	Landon/ROOSEVELT*/Lemke	350,461	698,811	0	1,129,975*	31.0	61.8	0.0	7.1	348,350 D	30.8	0.0
1932												
Pres	Hoover*/ROOSEVELT	363,959	600,806	0	1,002,843*	36.3	59.9	0.0	3.8	236,847 D	23.6	0.0
1928												
Pres	HOOVER+/Smith	560,977	396,451	0	970,976*	57.8	40.8	0.0	1.4	164,526 R	16.9	0.0
1924												
Pres	COOLIDGE+/Davis/LaFollet	420,759	55,913	339,192	822,146*	51.2	6.8	41.3	0.8	81,567 R	9.9	0.0
1920												
Pres	HARDING+/Cox/Debs	519,421	142,994	0	735,838*	70.6	19.4	0.0	10.0	376,427 R	51.2	0.0

POLIDATA © Demographic and Political Guides. All Rights Reserved. Copyright © 2003. www.polidata.us

1. Statewide Winner in UPPERCASE. Incumbency: * for incumbent, + for party holding seat.

2. BOLDING indicates unit won by REPUBLICANS. Plurality in UPPERCASE indicates unit won with a majority of the vote.

3. Total column may include votes for minor party candidates. An asterisk (*) follows the Total column if it includes votes not listed (see Rem%).

4. % of Marg(in) is Plurality as % of Total Vote. GOP Index (R-Dex) is the percentage (not percentage points) by which GOP% for County is above(+)/below(-) the State GOP%.

5. Order of races is standardized and may not match ballot order. Selected races only; non-competitive lower-ticket races may be omitted.

6. Each race is assigned a specific bar in the graphs. Top of the ticket is darkest bar and is at the left of each year cluster. Races not listed in the history table will result in blank bars.

Figure 1. TOTAL VOTES.

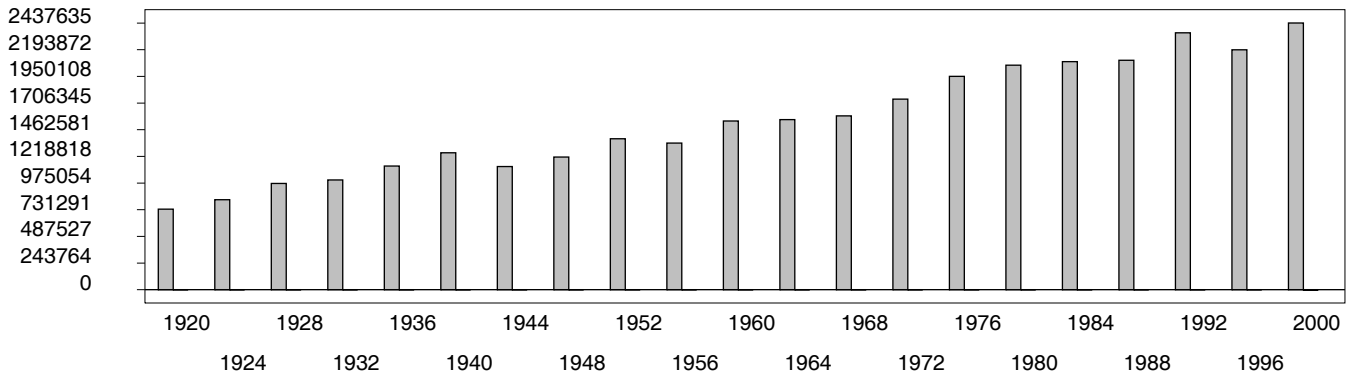


Figure 2. REPUBLICAN %. Refer to GOP-DEX for comparative value.

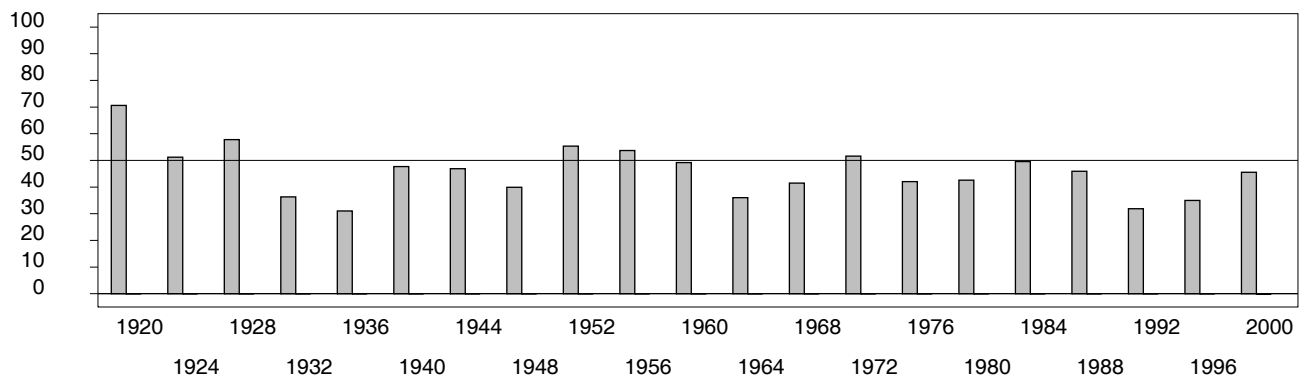


Figure 3. R-DEX: % by which County GOP% is above/below the State GOP%.



1. Statewide Winner in UPPERCASE. Incumbency: * for incumbent, + for party holding seat.
2. BOLDING indicates unit won by REPUBLICANS. Plurality in UPPERCASE indicates unit won with a majority of the vote.
3. Total column may include votes for minor party candidates. An asterisk (*) follows the Total column if it includes votes not listed (see Rem%).
4. % of Marg(in) is Plurality as % of Total Vote. GOP Index (R-Dex) is the percentage (not percentage points) by which GOP% for County is above(+)/below(-) the State GOP%.
5. Order of races is standardized and may not match ballot order. Selected races only; non-competitive lower-ticket races may be omitted.
6. Each race is assigned a specific bar in the graphs. Top of the ticket is darkest bar and is at the left of each year cluster. Races not listed in the history table will result in blank bars.

[27000VHB-psvhy21-CH25]