

Race	Candidate GOP/Dem/Ind	GOP Vote	Dem Vote	Ind Vote	Total Vote	GOP %	Dem %	Ind %	Rem %	Plurality/Win	%of Marg	GOP Index	
2002													
Sen	Taylor/BAUCUS*	103,611	204,853	0	326,537*	31.7	62.7	0.0	5.5	101,242	D	31.0	0.0
Cong	REHBERG*/Kelly	214,100	108,233	0	331,321*	64.6	32.7	0.0	2.7	105,867	R	32.0	0.0
2000													
Pres	BUSH+/Gore/Nader	240,178	137,126	0	410,986*	58.4	33.4	0.0	8.2	103,052	R	25.1	0.0
Sen	BURNS*/Schweitzer	208,082	194,430	0	411,601*	50.6	47.2	0.0	2.2	13,652	R	3.3	0.0
Cong	REHBERG+/Keenan	211,418	189,971	0	410,521*	51.5	46.3	0.0	2.2	21,447	R	5.2	0.0
Gov	MARTZ*/O' Keefe	209,135	193,131	0	410,192*	51.0	47.1	0.0	1.9	16,004	R	3.9	0.0
Sec	BROWN/Harper+	202,369	174,053	0	396,489*	51.0	43.9	0.0	5.1	28,316	R	7.1	0.0
AtG	Rice/MCGRATH+	186,299	211,726	0	398,025	46.8	53.2	0.0	0.0	25,427	D	6.4	0.0
Aud	Schmidt/MORRISON+/Scott	174,854	196,287	20,051	391,192	44.7	50.2	5.1	0.0	21,433	D	5.5	0.0
Educ	Herman/MCCULLOCH+/Foust	162,069	206,941	22,952	391,962	41.4	52.8	5.9	0.0	44,872	D	11.5	0.0
1998													
Cong	HILL*/Deschamps	175,748	147,073	0	331,551*	53.0	44.4	0.0	2.6	28,675	R	8.7	0.0
1996													
Pres	DOLE/Clinton*/Perot	179,652	167,922	55,229	407,083*	44.1	41.3	13.6	1.1	11,730	r	2.9	0.0
Sen	Rehberg/BAUCUS*	182,111	201,935	0	407,490*	44.7	49.6	0.0	5.8	19,824	d	4.9	0.0
Cong	HILL/Yellowtail+	211,975	174,516	0	404,426*	52.4	43.2	0.0	4.4	37,459	R	9.3	0.0
Gov	RACICOT*/Jacobson	320,768	76,471	0	405,175*	79.2	18.9	0.0	2.0	244,297	R	60.3	0.0
AtG	Baer/MAZUREK*	154,251	236,689	0	390,940	39.5	60.5	0.0	0.0	82,438	D	21.1	0.0
Educ	Buchanan/KEENAN*	162,570	225,201	0	399,887*	40.7	56.3	0.0	3.0	62,631	D	15.7	0.0
1994													
Sen	BURNS*/Mudd	218,542	131,845	0	350,387	62.4	37.6	0.0	0.0	86,697	R	24.7	0.0
Cong	Jamison/WILLIAMS*/Kelly	148,715	171,372	32,046	352,133	42.2	48.7	9.1	0.0	22,657	d	6.4	0.0
SClk	No GOP/SMITH*/O' Neil	0	207,734	93,429	301,163	0.0	69.0	31.0	0.0	114,305	D	38.0	0.0
1992													
Pres	Bush*/CLINTON/Perot	144,207	154,507	107,225	410,611*	35.1	37.6	26.1	1.1	10,300	d	2.5	0.0
Cong	Marlenee*/WILLIAMS*	189,570	203,711	0	403,735*	47.0	50.5	0.0	2.6	14,141	D	3.5	0.0
Gov	RACICOT+/Bradley	209,401	198,421	0	407,822	51.4	48.7	0.0	0.0	10,980	R	2.7	0.0
Sec	Werner/COONEY*	139,977	249,359	0	389,336	36.0	64.1	0.0	0.0	109,382	D	28.1	0.0
AtG	Sands+/MAZUREK	168,745	222,491	0	391,236	43.1	56.9	0.0	0.0	53,746	D	13.7	0.0
Aud	Thomas+/O' KEEFE	160,023	215,238	0	391,259*	40.9	55.0	0.0	4.1	55,215	D	14.1	0.0
1990													
Sen	Kolstad/BAUCUS*	93,836	217,563	0	319,336*	29.4	68.1	0.0	2.5	123,727	D	38.8	0.0
1988													
Pres	BUSH+/Dukakis	190,412	168,936	0	365,674*	52.1	46.2	0.0	1.7	21,476	R	5.9	0.0
Sen	BURNS/Melcher*	189,445	175,809	0	365,254	51.9	48.1	0.0	0.0	13,636	R	3.7	0.0
Gov	STEPHENS/Judge+	190,604	169,313	0	367,021*	51.9	46.1	0.0	1.9	21,291	R	5.8	0.0
Sec	Story+/COONEY	163,830	174,917	0	354,921*	46.2	49.3	0.0	4.6	11,087	d	3.1	0.0
AtG	RACICOT/McGrath+	188,825	171,887	0	360,712	52.4	47.7	0.0	0.0	16,938	R	4.7	0.0
Educ	Foster+/KEENAN	140,508	216,360	0	356,868	39.4	60.6	0.0	0.0	75,852	D	21.3	0.0
SClk	Neild-English+/SMITH	164,587	176,281	0	340,868	48.3	51.7	0.0	0.0	11,694	D	3.4	0.0
1984													
Pres	REAGAN*/Mondale	232,450	146,742	0	384,377*	60.5	38.2	0.0	1.4	85,708	R	22.3	0.0
Sen	Cozzens/BAUCUS*	154,308	215,704	0	379,155*	40.7	56.9	0.0	2.4	61,396	D	16.2	0.0
Gov	Goodover/SCHWINDEN*	100,070	266,578	0	378,970*	26.4	70.3	0.0	3.3	166,508	D	43.9	0.0
Sec	WALTERMIRE*/Tropila	252,795	115,009	0	367,804	68.7	31.3	0.0	0.0	137,786	R	37.5	0.0
AtG	Kelley/GREELY*	140,798	213,663	0	367,184*	38.4	58.2	0.0	3.5	72,865	D	19.8	0.0
Aud	HEMSTAD+/Anderson/Summe	191,535	147,403	21,143	360,081	53.2	40.9	5.9	0.0	44,132	R	12.3	0.0
Educ	ARGENBRIGHT/Driscoll	205,836	157,034	0	362,870	56.7	43.3	0.0	0.0	48,802	R	13.4	0.0
1982													
Sen	Williams/MELCHER*	133,789	174,861	0	321,062*	41.7	54.5	0.0	3.9	41,072	D	12.8	0.0
SClk	HARRISON/Conboy/Hoffman	133,779	131,926	27,640	293,345	45.6	45.0	9.4	0.0	1,853	r	0.6	0.0

1. Winner in UPPERCASE. Incumbency: * for incumbent, + for party holding seat.

2. BOLDING indicates unit won by REPUBLICANS. Plurality in UPPERCASE indicates party which won unit won with a majority of the vote.

3. Total column may include votes for minor party candidates. An asterisk (*) follows the Total column if it includes votes not listed (see Rem%).

4. % of Marg(in) is Plurality as % of Total Vote. GOP Index (R-Dex) is the percentage (not percentage points) by which GOP% for County is above(+)/below(-) the State GOP%.

5. Order of races is standardized and may not match ballot order. Selected races only; non-competitive lower-ticket races may be omitted.

6. Each race is assigned a specific bar in the graphs. Top of the ticket is darkest bar and is at the left of each year cluster. Races not listed in the history table will result in blank bars.

Figure 1. TOTAL VOTES.

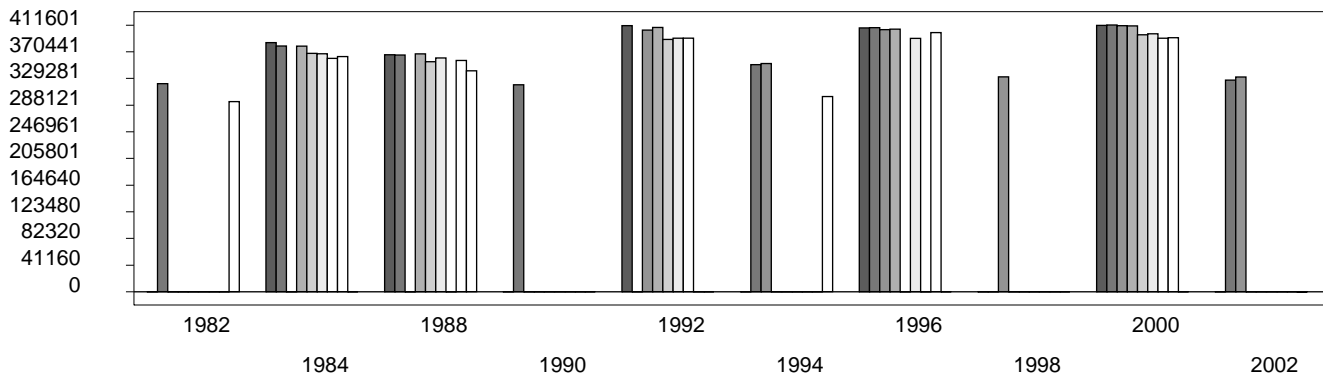


Figure 2. REPUBLICAN %. Refer to GOP-DEX for comparative value.

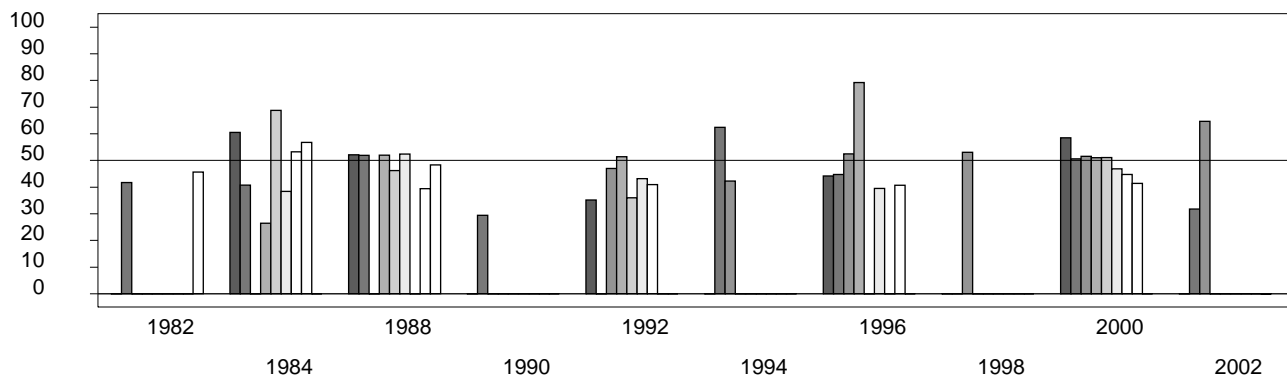


Figure 3. R-DEX: % by which County GOP% is above/below the State GOP%.

