

Race	Candidate GOP/Dem/Ind	GOP Vote	Dem Vote	Ind Vote	Total Vote	GOP %	Dem %	Ind %	Rem %	Plurality/Win	%of Marg	GOP Index
2000												
Pres	BUSH+/Gore/Nader	240,178	137,126	0	410,986*	58.4	33.4	0.0	8.2	103,052 R	25.1	0.0
1996												
Pres	DOLE/Clinton*/Perot	179,652	167,922	55,229	407,083*	44.1	41.3	13.6	1.1	11,730 r	2.9	0.0
1992												
Pres	Bush*/CLINTON/Perot	144,207	154,507	107,225	410,611*	35.1	37.6	26.1	1.1	10,300 d	2.5	0.0
1988												
Pres	BUSH+/Dukakis	190,412	168,936	0	365,674*	52.1	46.2	0.0	1.7	21,476 R	5.9	0.0
1984												
Pres	REAGAN*/Mondale	232,450	146,742	0	384,377*	60.5	38.2	0.0	1.4	85,708 R	22.3	0.0
1980												
Pres	REAGAN+/Carter/Anderson	206,814	118,032	29,281	363,952*	56.8	32.4	8.1	2.7	88,782 R	24.4	0.0
1976												
Pres	FORD+/Carter	173,703	149,259	0	328,734*	52.8	45.4	0.0	1.8	24,444 R	7.4	0.0
1972												
Pres	NIXON*/McGovern	183,976	120,197	0	317,603*	57.9	37.9	0.0	4.2	63,779 R	20.1	0.0
1968												
Pres	NIXON/Humphrey+/Wallace	138,835	114,117	20,015	274,404*	50.6	41.6	7.3	0.5	24,718 R	9.0	0.0
1964												
Pres	Goldwater+/JOHNSON	113,032	164,246	0	278,628*	40.6	59.0	0.0	0.5	51,214 D	18.4	0.0
1960												
Pres	NIXON+/Kennedy	141,841	134,891	0	277,579*	51.1	48.6	0.0	0.3	6,950 R	2.5	0.0
1956												
Pres	EISENHOWER*/Stevenson	154,933	116,238	0	271,171	57.1	42.9	0.0	0.0	38,695 R	14.3	0.0
1952												
Pres	EISENHOWER/Stevenson+	157,394	106,213	0	265,037*	59.4	40.1	0.0	0.5	51,181 R	19.3	0.0
1948												
Pres	Dewey/TRUMAN+	96,770	119,071	0	224,278*	43.2	53.1	0.0	3.8	22,301 D	9.9	0.0
1944												
Pres	Dewey/ROOSEVELT*	93,163	112,556	0	207,355*	44.9	54.3	0.0	0.8	19,393 D	9.4	0.0
1940												
Pres	Willkie/ROOSEVELT*	99,579	145,698	0	247,873*	40.2	58.8	0.0	1.1	46,119 D	18.6	0.0
1936												
Pres	Landon/ROOSEVELT*	63,598	159,690	0	230,502*	27.6	69.3	0.0	3.1	96,092 D	41.7	0.0
1932												
Pres	Hoover*/ROOSEVELT	78,078	127,286	0	216,479*	36.1	58.8	0.0	5.1	49,208 D	22.7	0.0
1928												
Pres	HOOVER+/Smith	113,300	78,578	0	194,108*	58.4	40.5	0.0	1.2	34,722 R	17.9	0.0
1924												
Pres	COOLIDGE+/Davis/LaFollet	74,138	33,805	66,124	174,425*	42.5	19.4	37.9	0.2	8,014 r	4.6	0.0
1920												
Pres	HARDING/Cox+/Christensen	109,430	57,372	0	179,006*	61.1	32.1	0.0	6.8	52,058 R	29.1	0.0

POLIDATA © Demographic and Political Guides. All Rights Reserved. Copyright © 2003. www.polidata.us

1. Winner in UPPERCASE. Incumbency: * for incumbent, + for party holding seat.

2. BOLDING indicates unit won by REPUBLICANS. Plurality in UPPERCASE indicates party which won unit won with a majority of the vote.

3. Total column may include votes for minor party candidates. An asterisk (*) follows the Total column if it includes votes not listed (see Rem%).

4. % of Marg(in) is Plurality as % of Total Vote. GOP Index (R-Dex) is the percentage (not percentage points) by which GOP% for County is above(+)/below(-) the State GOP%.

5. Order of races is standardized and may not match ballot order. Selected races only; non-competitive lower-ticket races may be omitted.

6. Each race is assigned a specific bar in the graphs. Top of the ticket is darkest bar and is at the left of each year cluster. Races not listed in the history table will result in blank bars.

Figure 1. TOTAL VOTES.

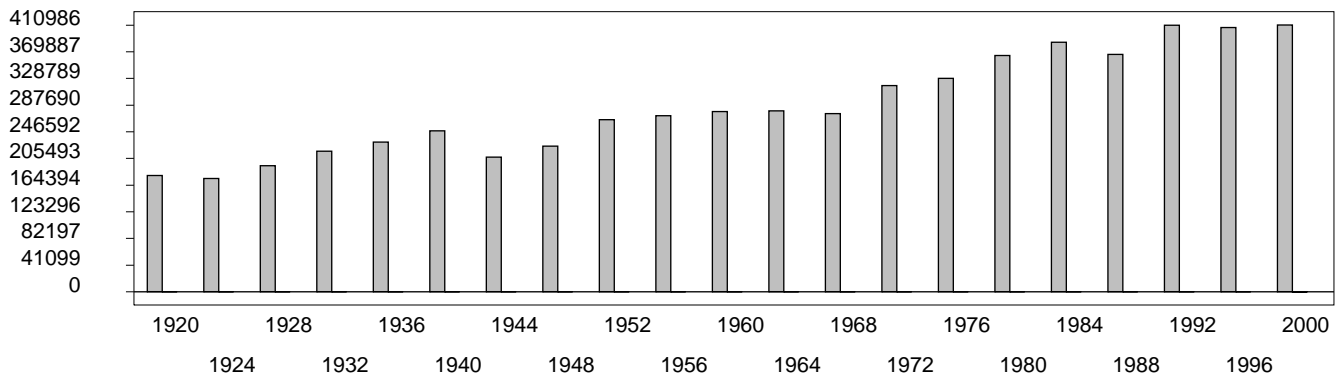


Figure 2. REPUBLICAN %. Refer to GOP-DEX for comparative value.

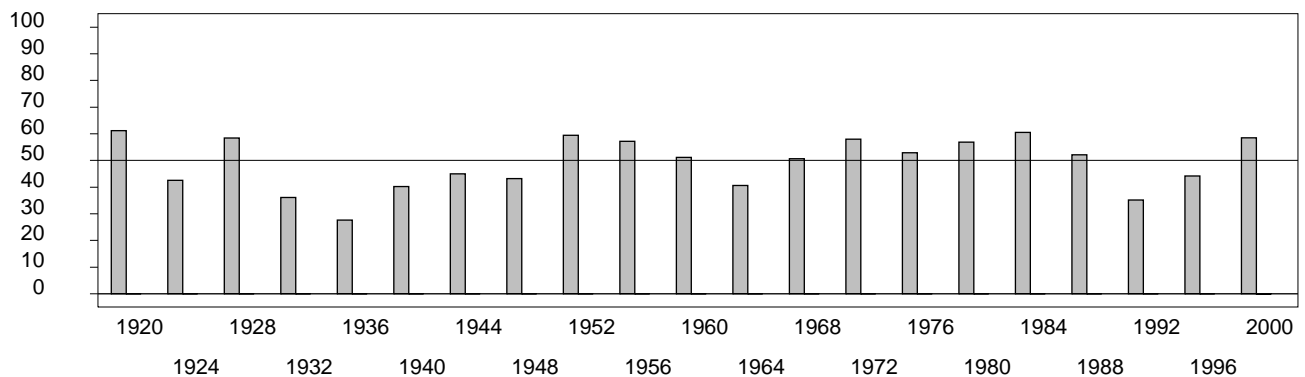
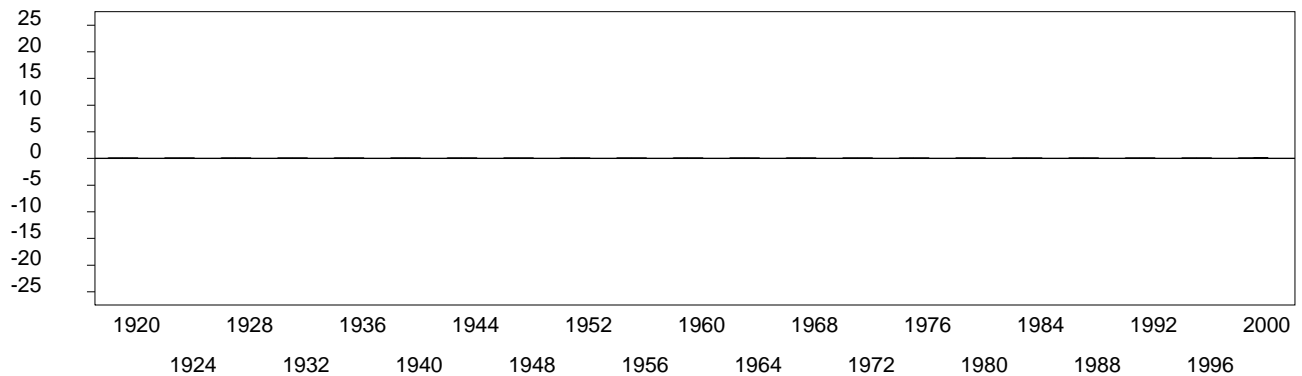


Figure 3. R-DEX: % by which County GOP% is above/below the State GOP%.



1. Winner in UPPERCASE. Incumbency: * for incumbent, + for party holding seat.
2. BOLDING indicates unit won by REPUBLICANS. Plurality in UPPERCASE indicates party which won unit won with a majority of the vote.
3. Total column may include votes for minor party candidates. An asterisk (*) follows the Total column if it includes votes not listed (see Rem%).
4. % of Marg(in) is Plurality as % of Total Vote. GOP Index (R-Dex) is the percentage (not percentage points) by which GOP% for County is above(+)/below(-) the State GOP%.
5. Order of races is standardized and may not match ballot order. Selected races only; non-competitive lower-ticket races may be omitted.
6. Each race is assigned a specific bar in the graphs. Top of the ticket is darkest bar and is at the left of each year cluster. Races not listed in the history table will result in blank bars.

[30000VHB-psvhcy21-CB15]