

Race	Candidate GOP/Dem/Ind	GOP Vote	Dem Vote	Ind Vote	Total Vote	GOP %	Dem %	Ind %	Rem %	Plurality/Win	%of Marg	GOP Index
2000												
Pres	BUSH+/Gore	433,862	231,780	0	697,019*	62.3	33.3	0.0	4.5	202,082 R	29.0	0.0
1996												
Pres	DOLE+/Clinton/Perot	363,467	236,761	71,278	677,415*	53.7	35.0	10.5	0.9	126,706 R	18.7	0.0
1992												
Pres	BUSH*/Clinton/Perot	343,678	216,864	174,104	737,546*	46.6	29.4	23.6	0.4	126,814 r	17.2	0.0
1988												
Pres	BUSH+/Dukakis	397,956	259,235	0	661,465*	60.2	39.2	0.0	0.7	138,721 R	21.0	0.0
1984												
Pres	REAGAN*/Mondale	460,054	187,866	0	652,090*	70.6	28.8	0.0	0.6	272,188 R	41.7	0.0
1980												
Pres	REAGAN+/Carter/Anderson	419,937	166,851	44,993	640,854*	65.5	26.0	7.0	1.4	253,086 R	39.5	0.0
1976												
Pres	FORD+/Carter	359,705	233,692	9,409	607,668*	59.2	38.5	1.6	0.8	126,013 R	20.7	0.0
1972												
Pres	NIXON*/McGovern	406,298	169,991	0	576,289	70.5	29.5	0.0	0.0	236,307 R	41.0	0.0
1968												
Pres	NIXON/Humphrey+/Wallace	321,163	170,784	44,904	536,851	59.8	31.8	8.4	0.0	150,379 R	28.0	0.0
1964												
Pres	Goldwater+/JOHNSON	276,847	307,307	0	584,154	47.4	52.6	0.0	0.0	30,460 D	5.2	0.0
1960												
Pres	NIXON+/Kennedy	380,553	232,542	0	613,095	62.1	37.9	0.0	0.0	148,011 R	24.1	0.0
1956												
Pres	EISENHOWER*/Stevenson	378,108	199,029	0	577,137	65.5	34.5	0.0	0.0	179,079 R	31.0	0.0
1952												
Pres	EISENHOWER+/Stevenson	421,603	188,057	0	609,660	69.2	30.9	0.0	0.0	233,546 R	38.3	0.0
1948												
Pres	DEWEY*/Truman	264,774	224,165	0	488,940*	54.2	45.9	0.0	0.0	40,609 R	8.3	0.0
1944												
Pres	DEWEY+/Roosevelt	329,880	233,246	0	563,126	58.6	41.4	0.0	0.0	96,634 R	17.2	0.0
1940												
Pres	WILLKIE/Roosevelt*	352,201	263,677	0	615,878	57.2	42.8	0.0	0.0	88,524 R	14.4	0.0
1936												
Pres	Landon/ROOSEVELT*	247,731	347,445	0	608,023*	40.7	57.1	0.0	2.1	99,714 D	16.4	0.0
1932												
Pres	Hoover*/ROOSEVELT	201,177	359,082	0	570,135*	35.3	63.0	0.0	1.7	157,905 D	27.7	0.0
1928												
Pres	HOOVER+/Smith	345,745	197,950	0	547,128*	63.2	36.2	0.0	0.6	147,795 R	27.0	0.0
1924												
Pres	COOLIDGE+/Davis/LaFollet	218,985	137,299	105,681	463,559*	47.2	29.6	22.8	0.3	81,686 r	17.6	0.0
1920												
Pres	HARDING+/Cox+	247,498	119,608	0	387,443*	64.7	31.3	0.0	4.1	127,890 R	33.4	0.0

POLIDATA © Demographic and Political Guides. All Rights Reserved. Copyright © 2003. www.polidata.us

1. Statewide Winner in UPPERCASE. Incumbency: * for incumbent, + for party holding seat.

2. BOLDING indicates unit won by REPUBLICANS. Plurality in UPPERCASE indicates unit won with a majority of the vote.

3. Total column may include votes for minor party candidates. An asterisk (*) follows the Total column if it includes votes not listed (see Rem%).

4. % of Marg(in) is Plurality as % of Total Vote. GOP Index (R-Dex) is the percentage (not percentage points) by which GOP% for County is above(+)/below(-) the State GOP%.

5. Order of races is standardized and may not match ballot order. Selected races only; non-competitive lower-ticket races may be omitted.

6. Each race is assigned a specific bar in the graphs. Top of the ticket is darkest bar and is at the left of each year cluster. Races not listed in the history table will result in blank bars.

Figure 1. TOTAL VOTES.

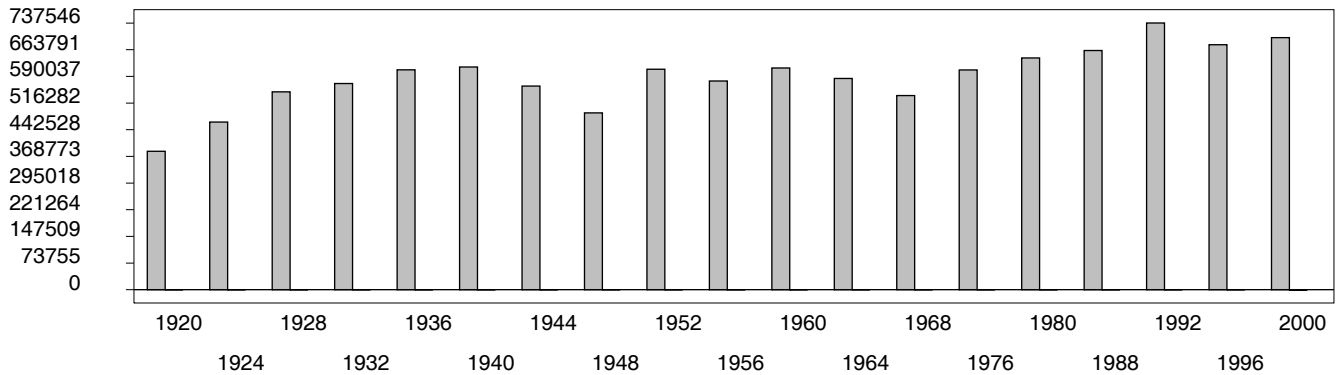


Figure 2. REPUBLICAN %. Refer to GOP-DEX for comparative value.

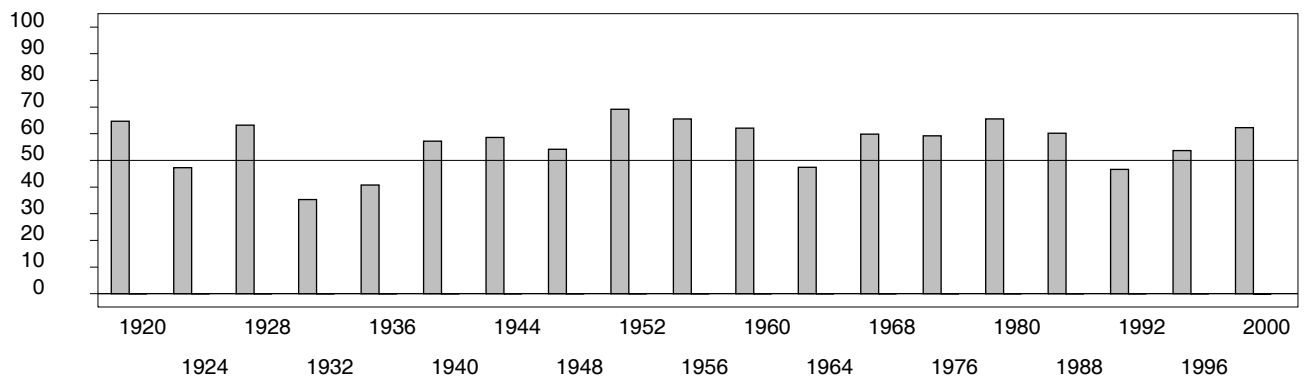
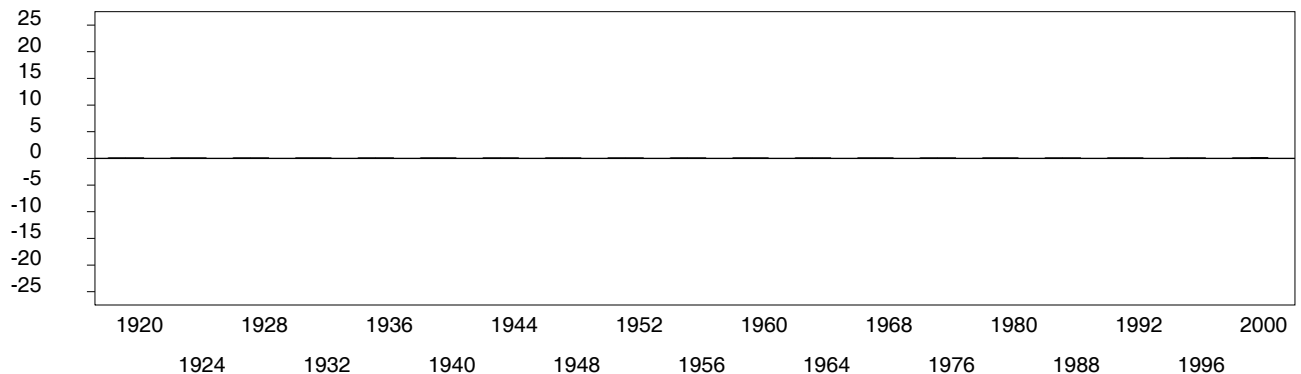


Figure 3. R-DEX: % by which County GOP% is above/below the State GOP%.



1. Statewide Winner in UPPERCASE. Incumbency: * for incumbent, + for party holding seat.
2. BOLDING indicates unit won by REPUBLICANS. Plurality in UPPERCASE indicates unit won with a majority of the vote.
3. Total column may include votes for minor party candidates. An asterisk (*) follows the Total column if it includes votes not listed (see Rem%).
4. % of Marg(in) is Plurality as % of Total Vote. GOP Index (R-Dex) is the percentage (not percentage points) by which GOP% for County is above(+)/below(-) the State GOP%.
5. Order of races is standardized and may not match ballot order. Selected races only; non-competitive lower-ticket races may be omitted.
6. Each race is assigned a specific bar in the graphs. Top of the ticket is darkest bar and is at the left of each year cluster. Races not listed in the history table will result in blank bars.

[31000VHB-psvhy21-DD09]