

Race	Candidate GOP/Dem/Ind	GOP Vote	Dem Vote	Ind Vote	Total Vote	GOP %	Dem %	Ind %	Rem %	Plurality/Win	%of Marg	GOP Index
<b>2000</b>												
Pres	BUSH/Gore+	301,575	279,978	0	605,655*	49.8	46.2	0.0	4.0	21,597 r	3.6	0.0
<b>1996</b>												
Pres	Dole/CLINTON*/Perot	199,244	203,974	43,986	464,279*	42.9	43.9	9.5	3.7	4,730 d	1.0	0.0
<b>1992</b>												
Pres	Bush*/CLINTON/Perot	175,828	189,148	132,580	506,318*	34.7	37.4	26.2	1.7	13,320 d	2.6	0.0
<b>1988</b>												
Pres	BUSH+/Dukakis	206,040	132,738	0	350,067*	58.9	37.9	0.0	3.2	73,302 R	20.9	0.0
<b>1984</b>												
Pres	REAGAN*/Mondale	188,770	91,655	0	286,667*	65.9	32.0	0.0	2.2	97,115 R	33.9	0.0
<b>1980</b>												
Pres	REAGAN+/Carter/Anderson	155,017	66,666	17,651	247,885*	62.5	26.9	7.1	3.5	88,351 R	35.7	0.0
<b>1976</b>												
Pres	FORD*/Carter	101,273	92,479	0	201,876*	50.2	45.8	0.0	4.0	8,794 R	4.4	0.0
<b>1972</b>												
Pres	NIXON*/McGovern	115,750	66,016	0	181,766	63.7	36.3	0.0	0.0	49,734 R	27.4	0.0
<b>1968</b>												
Pres	NIXON/Humphrey+/Wallace	73,188	60,598	20,432	154,218	47.5	39.3	13.3	0.0	12,590 r	8.2	0.0
<b>1964</b>												
Pres	Goldwater/JOHNSON*	56,094	79,339	0	135,433	41.4	58.6	0.0	0.0	23,245 D	17.2	0.0
<b>1960</b>												
Pres	Nixon+/KENNEDY	52,387	54,880	0	107,267	48.8	51.2	0.0	0.0	2,493 D	2.3	0.0
<b>1956</b>												
Pres	EISENHOWER*/Stevenson	56,049	40,640	0	96,689	58.0	42.0	0.0	0.0	15,409 R	15.9	0.0
<b>1952</b>												
Pres	EISENHOWER/Stevenson+	50,502	31,688	0	82,190	61.5	38.6	0.0	0.0	18,814 R	22.9	0.0
<b>1948</b>												
Pres	Dewey/TRUMAN*	29,357	31,291	0	62,117*	47.3	50.4	0.0	2.4	1,934 D	3.1	0.0
<b>1944</b>												
Pres	Dewey/ROOSEVELT*	24,611	29,623	0	54,234	45.4	54.6	0.0	0.0	5,012 D	9.2	0.0
<b>1940</b>												
Pres	Willkie/ROOSEVELT*	21,229	31,945	0	53,174	39.9	60.1	0.0	0.0	10,716 D	20.2	0.0
<b>1936</b>												
Pres	Landon/ROOSEVELT*	11,923	31,925	0	43,848	27.2	72.8	0.0	0.0	20,002 D	45.6	0.0
<b>1932</b>												
Pres	Hoover*/ROOSEVELT	12,674	28,756	0	41,430	30.6	69.4	0.0	0.0	16,082 D	38.8	0.0
<b>1928</b>												
Pres	HOOVER+/Smith	18,327	14,090	0	32,417	56.5	43.5	0.0	0.0	4,237 R	13.1	0.0
<b>1924</b>												
Pres	COOLIDGE+/Davis/LaFollet	11,243	5,909	9,769	26,921	41.8	22.0	36.3	0.0	1,474 r	5.5	0.0
<b>1920</b>												
Pres	HARDING/Cox+/Debs	15,479	9,851	1,864	27,194	56.9	36.2	6.9	0.0	5,628 R	20.7	0.0

POLIDATA © Demographic and Political Guides. All Rights Reserved. Copyright © 2003. www.polidata.us

1. Statewide Winner in UPPERCASE. Incumbency: \* for incumbent, + for party holding seat.

2. BOLDING indicates unit won by REPUBLICANS. Plurality in UPPERCASE indicates unit won with a majority of the vote.

3. Total column may include votes for minor party candidates. An asterisk (\*) follows the Total column if it includes votes not listed (see Rem%).

4. % of Marg(in) is Plurality as % of Total Vote. GOP Index (R-Dex) is the percentage (not percentage points) by which GOP% for County is above(+)/below(-) the State GOP%.

5. Order of races is standardized and may not match ballot order. Selected races only; non-competitive lower-ticket races may be omitted.

6. Each race is assigned a specific bar in the graphs. Top of the ticket is darkest bar and is at the left of each year cluster. Races not listed in the history table will result in blank bars.

Figure 1. TOTAL VOTES.

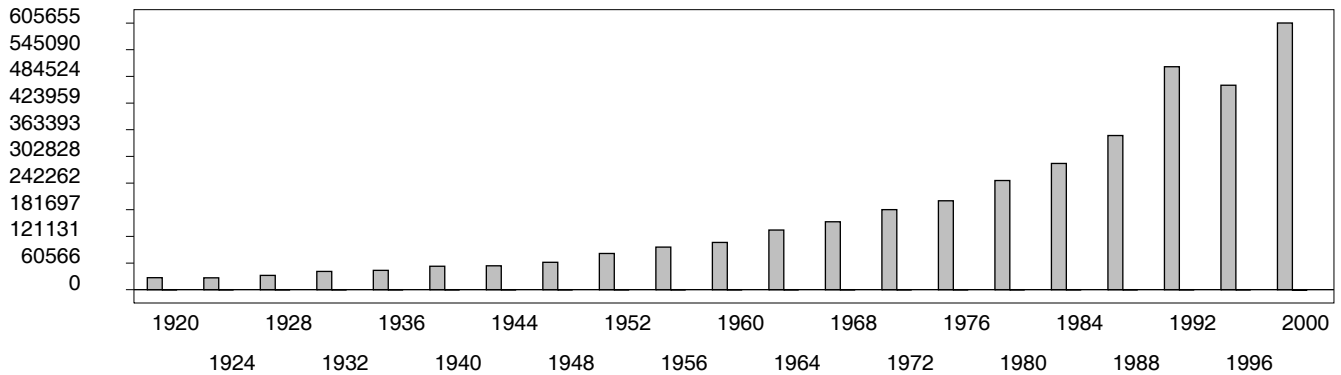


Figure 2. REPUBLICAN %. Refer to GOP-DEX for comparative value.

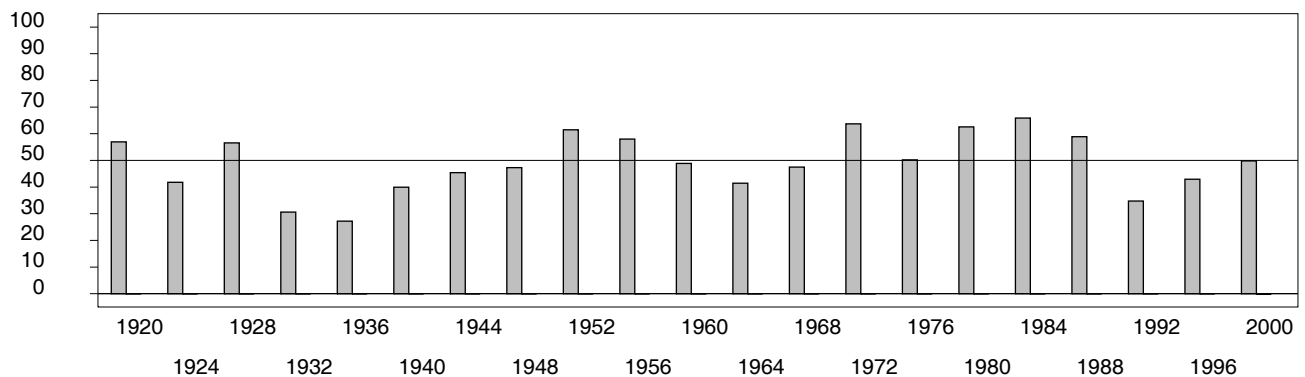


Figure 3. R-DEX: % by which County GOP% is above/below the State GOP%.



1. Statewide Winner in UPPERCASE. Incumbency: \* for incumbent, + for party holding seat.
2. BOLDING indicates unit won by REPUBLICANS. Plurality in UPPERCASE indicates unit won with a majority of the vote.
3. Total column may include votes for minor party candidates. An asterisk (\*) follows the Total column if it includes votes not listed (see Rem%).
4. % of Marg(in) is Plurality as % of Total Vote. GOP Index (R-Dex) is the percentage (not percentage points) by which GOP% for County is above(+)/below(-) the State GOP%.
5. Order of races is standardized and may not match ballot order. Selected races only; non-competitive lower-ticket races may be omitted.
6. Each race is assigned a specific bar in the graphs. Top of the ticket is darkest bar and is at the left of each year cluster. Races not listed in the history table will result in blank bars.

[32000VHB-psvhcy21-DC22]