

Race	Candidate GOP/Dem/Ind	GOP Vote	Dem Vote	Ind Vote	Total Vote	GOP %	Dem %	Ind %	Rem %	Plurality/Win	%of Marg	GOP Index
2002												
Sen	SUNUNU+/Shaheen	227,229	207,478	0	446,938*	50.8	46.4	0.0	2.7	19,751 R	4.4	0.0
Cong	All Districts	254,797	175,905	0	443,140*	57.5	39.7	0.0	2.8	78,892 R	17.8	0.0
Gov	BENSON/Fernald+	259,663	169,277	0	441,968*	58.8	38.3	0.0	3.0	90,386 R	20.5	0.0
2000												
Pres	BUSH+/Gore	273,559	266,348	0	567,805*	48.2	46.9	0.0	4.9	7,211 r	1.3	0.0
Cong	All Districts	303,190	238,754	0	556,049*	54.5	42.9	0.0	2.5	64,436 R	11.6	0.0
Gov	Humphrey/SHAHEEN*/Brown	246,952	275,038	35,904	564,340*	43.8	48.7	6.4	1.1	28,086 d	5.0	0.0
1998												
Cong	All Districts	190,170	124,000	0	317,508*	59.9	39.1	0.0	1.1	66,170 R	20.8	0.0
Gov	Lucas/SHAHEEN*	98,473	210,769	0	317,897*	31.0	66.3	0.0	2.7	112,296 D	35.3	0.0
1996												
Pres	Dole/CLINTON*/Perot	196,532	246,214	48,390	496,719*	39.6	49.6	9.7	1.1	49,682 d	10.0	0.0
Sen	SMITH*/Swett	242,304	227,397	0	491,966*	49.3	46.2	0.0	4.5	14,907 r	3.0	0.0
Cong	All Districts	246,940	221,329	0	490,929*	50.3	45.1	0.0	4.6	25,611 R	5.2	0.0
Gov	Lamontagne+/SHAHEEN	196,321	284,175	0	496,786*	39.5	57.2	0.0	3.3	87,854 D	17.7	0.0
1994												
Cong	All Districts	180,138	116,723	0	309,394*	58.2	37.7	0.0	4.1	63,415 R	20.5	0.0
Gov	MERRILL+/King	218,134	79,686	0	311,529*	70.0	25.6	0.0	4.4	138,448 R	44.4	0.0
1992												
Pres	Bush*/CLINTON/Perot	202,484	209,040	121,337	537,215*	37.7	38.9	22.6	0.8	6,556 d	1.2	0.0
Sen	GREGG+/Rauh	249,591	234,982	0	518,170*	48.2	45.4	0.0	6.5	14,609 r	2.8	0.0
Cong	All Districts	227,063	265,906	0	510,771*	44.5	52.1	0.0	3.5	38,843 D	7.6	0.0
Gov	MERRILL+/Arnesen	289,170	206,232	0	516,065*	56.0	40.0	0.0	4.0	82,938 R	16.1	0.0
1990												
Sen	SMITH+/Durkin	189,792	91,299	0	290,808*	65.3	31.4	0.0	3.3	98,493 R	33.9	0.0
Cong	All Districts	148,909	141,042	0	289,951	51.4	48.6	0.0	0.0	7,867 R	2.7	0.0
Gov	GREGG*/Grandmaison	177,773	101,923	0	294,044*	60.5	34.7	0.0	4.9	75,850 R	25.8	0.0
1988												
Pres	BUSH+/Dukakis	281,537	163,696	0	450,525*	62.5	36.3	0.0	1.2	117,841 R	26.2	0.0
Cong	All Districts	251,566	176,300	0	429,320*	58.6	41.1	0.0	0.3	75,266 R	17.5	0.0
Gov	GREGG+/McEachern	267,064	172,543	0	441,823*	60.5	39.1	0.0	0.5	94,521 R	21.4	0.0
1986												
Sen	RUDMAN*/Peabody	154,090	79,225	0	244,738*	63.0	32.4	0.0	4.7	74,865 R	30.6	0.0
Cong	All Districts	156,218	84,475	0	240,693	64.9	35.1	0.0	0.0	71,743 R	29.8	0.0
Gov	SUNUNU*/McEachern	134,824	116,142	0	250,966	53.7	46.3	0.0	0.0	18,682 R	7.4	0.0
1984												
Pres	REAGAN*/Mondale	267,051	120,395	0	388,953*	68.7	31.0	0.0	0.4	146,656 R	37.7	0.0
Sen	HUMPHREY*/D' Amours	225,828	157,447	0	384,369*	58.8	41.0	0.0	0.3	68,381 R	17.8	0.0
Gov	SUNUNU*/Spirou	256,574	127,156	0	383,730	66.9	33.1	0.0	0.0	129,418 R	33.7	0.0
1982												
Cong	All Districts	153,974	114,187	0	268,913*	57.3	42.5	0.0	0.3	39,787 R	14.8	0.0
Gov	SUNUNU/Gallen*	145,389	132,317	0	282,491*	51.5	46.8	0.0	1.7	13,072 R	4.6	0.0
1980												
Pres	REAGAN+/Carter/Anderson	221,705	108,864	49,693	383,922*	57.8	28.4	12.9	1.0	112,841 R	29.4	0.0

POLIDATA © Demographic and Political Guides. All Rights Reserved. Copyright © 2003. www.polidata.us

1. Statewide Winner in UPPERCASE. Incumbency: * for incumbent, + for party holding seat.
2. BOLDING indicates unit won by REPUBLICANS. Plurality in UPPERCASE indicates unit won with a majority of the vote.
3. Total column may include votes for minor party candidates. An asterisk (*) follows the Total column if it includes votes not listed (see Rem%).
4. % of Marg(in) is Plurality as % of Total Vote. GOP Index (R-Dex) is the percentage (not percentage points) by which GOP% for County is above(+)/below(-) the State GOP%.
5. Order of races is standardized and may not match ballot order. Selected races only; non-competitive lower-ticket races may be omitted.
6. Each race is assigned a specific bar in the graphs. Top of the ticket is darkest bar and is at the left of each year cluster. Races not listed in the history table will result in blank bars.

Figure 1. TOTAL VOTES.

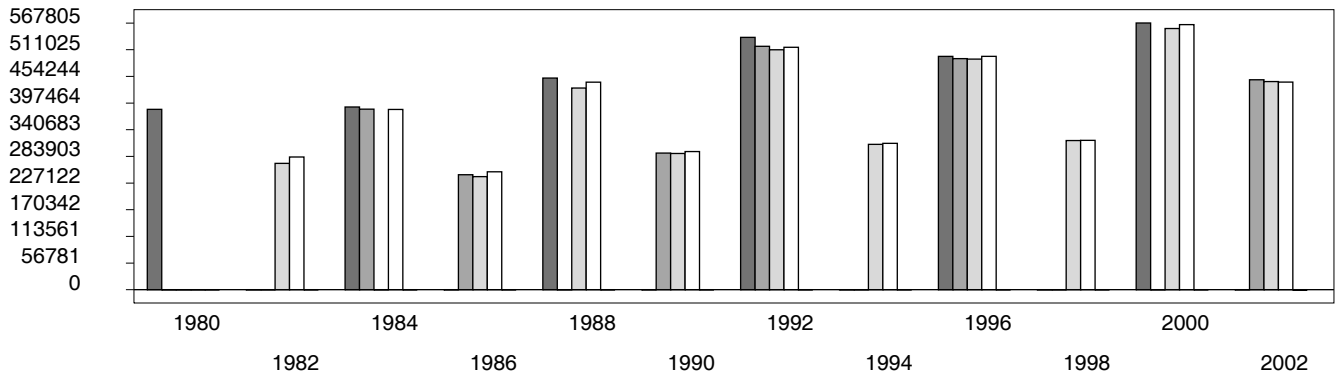


Figure 2. REPUBLICAN %. Refer to GOP-DEX for comparative value.

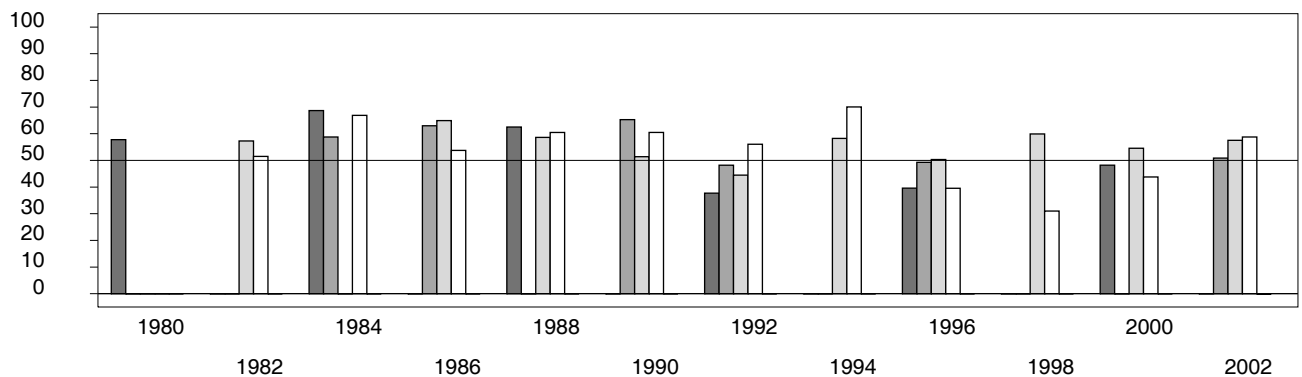
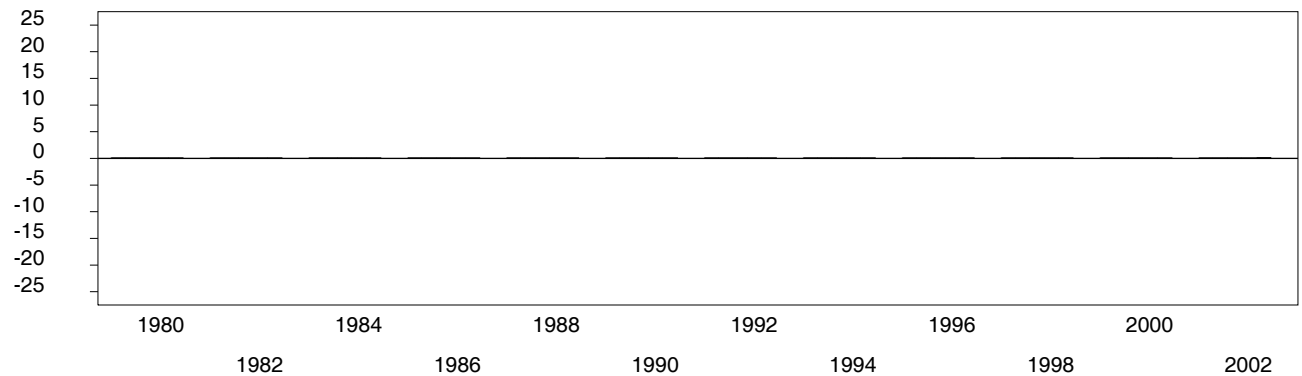


Figure 3. R-DEX: % by which County GOP% is above/below the State GOP%.



1. Statewide Winner in UPPERCASE. Incumbency: * for incumbent, + for party holding seat.

2. BOLDING indicates unit won by REPUBLICANS. Plurality in UPPERCASE indicates unit won with a majority of the vote.

3. Total column may include votes for minor party candidates. An asterisk (*) follows the Total column if it includes votes not listed (see Rem%).

4. % of Marg(in) is Plurality as % of Total Vote. GOP Index (R-Dex) is the percentage (not percentage points) by which GOP% for County is above(+)/below(-) the State GOP%.

5. Order of races is standardized and may not match ballot order. Selected races only; non-competitive lower-ticket races may be omitted.

6. Each race is assigned a specific bar in the graphs. Top of the ticket is darkest bar and is at the left of each year cluster. Races not listed in the history table will result in blank bars.