

Race	Candidate GOP/Dem/Ind	GOP Vote	Dem Vote	Ind Vote	Total Vote	GOP %	Dem %	Ind %	Rem %	Plurality/Win	%of Marg	GOP Index
2000												
Pres	BUSH+/Gore	273,559	266,348	0	567,805*	48.2	46.9	0.0	4.9	7,211 r	1.3	0.0
1996												
Pres	Dole/CLINTON*/Perot	196,532	246,214	48,390	496,719*	39.6	49.6	9.7	1.1	49,682 d	10.0	0.0
1992												
Pres	Bush*/CLINTON/Perot	202,484	209,040	121,337	537,215*	37.7	38.9	22.6	0.8	6,556 d	1.2	0.0
1988												
Pres	BUSH+/Dukakis	281,537	163,696	0	450,525*	62.5	36.3	0.0	1.2	117,841 R	26.2	0.0
1984												
Pres	REAGAN*/Mondale	267,051	120,395	0	388,953*	68.7	31.0	0.0	0.4	146,656 R	37.7	0.0
1980												
Pres	REAGAN+/Carter/Anderson	221,705	108,864	49,693	383,922*	57.8	28.4	12.9	1.0	112,841 R	29.4	0.0
1976												
Pres	FORD+/Carter	185,935	147,635	0	339,618*	54.8	43.5	0.0	1.8	38,300 R	11.3	0.0
1972												
Pres	NIXON*/McGovern	213,724	116,435	0	334,055*	64.0	34.9	0.0	1.2	97,289 R	29.1	0.0
1968												
Pres	NIXON/Humphrey+	154,903	130,589	11,173	297,298*	52.1	43.9	3.8	0.2	24,314 R	8.2	0.0
1964												
Pres	Goldwater+/JOHNSON	104,029	184,064	0	288,093	36.1	63.9	0.0	0.0	80,035 D	27.8	0.0
1960												
Pres	NIXON+/Kennedy	157,989	137,772	0	295,761	53.4	46.6	0.0	0.0	20,217 R	6.8	0.0
1956												
Pres	EISENHOWER*/Stevenson	176,519	90,364	0	266,994*	66.1	33.8	0.0	0.0	86,155 R	32.3	0.0
1952												
Pres	EISENHOWER+/Stevenson	166,287	106,663	0	272,950	60.9	39.1	0.0	0.0	59,624 R	21.8	0.0
1948												
Pres	DEWEY/Truman+	121,299	107,995	0	231,440*	52.4	46.7	0.0	0.9	13,304 R	5.8	0.0
1944												
Pres	Dewey/ROOSEVELT*	109,916	119,663	0	229,625*	47.9	52.1	0.0	0.0	9,747 D	4.2	0.0
1940												
Pres	Willkie/ROOSEVELT*	110,127	125,292	0	235,419	46.8	53.2	0.0	0.0	15,165 D	6.4	0.0
1936												
Pres	Landon+/ROOSEVELT	104,642	108,460	0	218,114*	48.0	49.7	0.0	2.3	3,818 d	1.8	0.0
1932												
Pres	HOOVER*/Roosevelt	103,629	100,680	0	205,520*	50.4	49.0	0.0	0.6	2,949 R	1.4	0.0
1928												
Pres	HOOVER*/Smith	115,404	80,715	0	196,757*	58.7	41.0	0.0	0.3	34,689 R	17.6	0.0
1924												
Pres	COOLIDGE+/Davis/LaFollet	98,575	57,201	8,993	164,769	59.8	34.7	5.5	0.0	41,374 R	25.1	0.0
1920												
Pres	HARDING/Cox+	95,196	62,662	0	159,092*	59.8	39.4	0.0	0.8	32,534 R	20.5	0.0

POLIDATA © Demographic and Political Guides. All Rights Reserved. Copyright © 2003. www.polidata.us

1. Statewide Winner in UPPERCASE. Incumbency: * for incumbent, + for party holding seat.

2. BOLDING indicates unit won by REPUBLICANS. Plurality in UPPERCASE indicates unit won with a majority of the vote.

3. Total column may include votes for minor party candidates. An asterisk (*) follows the Total column if it includes votes not listed (see Rem%).

4. % of Marg(in) is Plurality as % of Total Vote. GOP Index (R-Dex) is the percentage (not percentage points) by which GOP% for County is above(+)/below(-) the State GOP%.

5. Order of races is standardized and may not match ballot order. Selected races only; non-competitive lower-ticket races may be omitted.

6. Each race is assigned a specific bar in the graphs. Top of the ticket is darkest bar and is at the left of each year cluster. Races not listed in the history table will result in blank bars.

Figure 1. TOTAL VOTES.

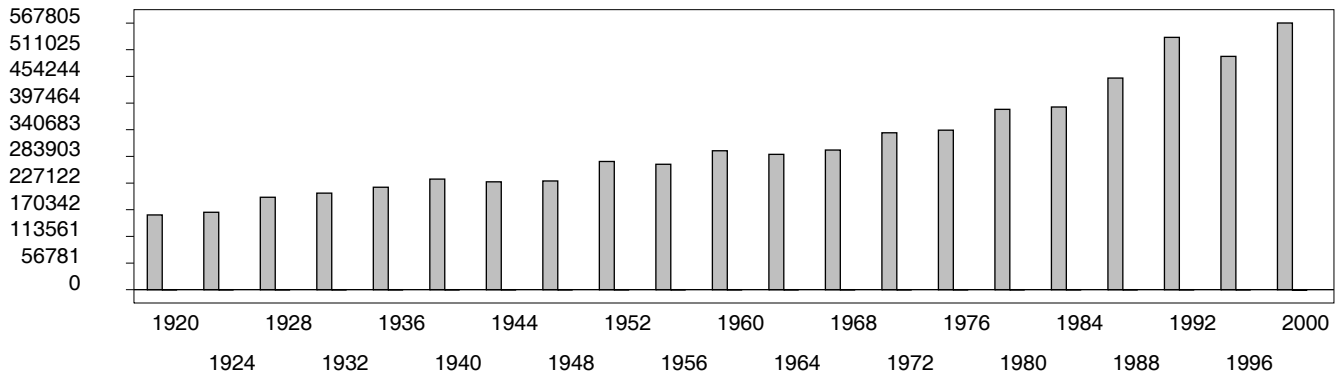


Figure 2. REPUBLICAN %. Refer to GOP-DEX for comparative value.

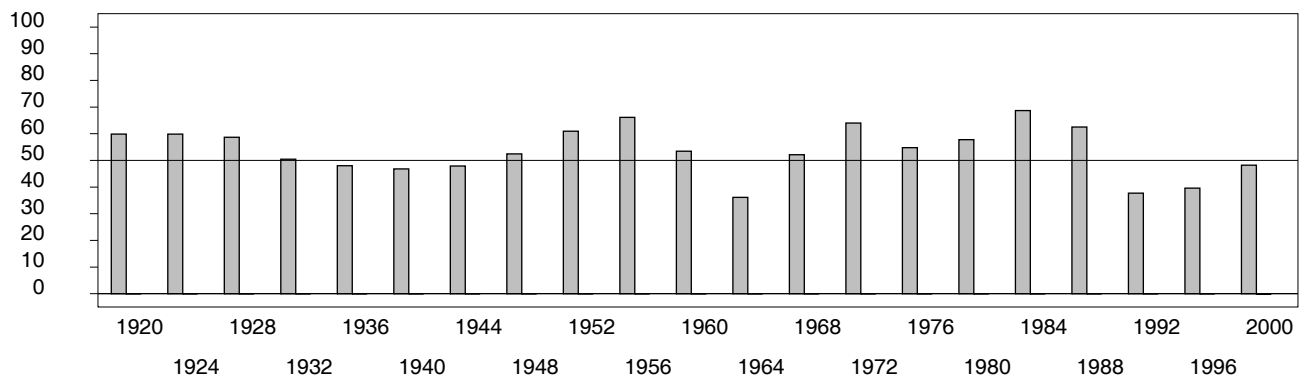


Figure 3. R-DEX: % by which County GOP% is above/below the State GOP%.



1. Statewide Winner in UPPERCASE. Incumbency: * for incumbent, + for party holding seat.

2. BOLDING indicates unit won by REPUBLICANS. Plurality in UPPERCASE indicates unit won with a majority of the vote.

3. Total column may include votes for minor party candidates. An asterisk (*) follows the Total column if it includes votes not listed (see Rem%).

4. % of Marg(in) is Plurality as % of Total Vote. GOP Index (R-Dex) is the percentage (not percentage points) by which GOP% for County is above(+)/below(-) the State GOP%.

5. Order of races is standardized and may not match ballot order. Selected races only; non-competitive lower-ticket races may be omitted.

6. Each race is assigned a specific bar in the graphs. Top of the ticket is darkest bar and is at the left of each year cluster. Races not listed in the history table will result in blank bars.