

Race	Candidate GOP/Dem/Ind	GOP Vote	Dem Vote	Ind Vote	Total Vote	GOP %	Dem %	Ind %	Rem %	Plurality/Win	%of Marg	GOP Index
2002												
Sen	DOMENICI*/Tristani	314,193	168,863	0	483,056	65.0	35.0	0.0	0.0	145,330 R	30.1	0.0
Gov	Sanchez+/RICHARDSON/Baco	189,090	268,674	26,465	484,229	39.1	55.5	5.5	0.0	79,584 D	16.4	0.0
Sec	Clahchischillia/VIGIL-GI	198,094	269,871	0	467,965	42.3	57.7	0.0	0.0	71,777 D	15.3	0.0
Aud	Benavides/MARTINEZ*	218,747	238,507	0	457,254	47.8	52.2	0.0	0.0	19,760 D	4.3	0.0
AtG	Perry/MADRID*/Gleason	179,718	273,175	25,191	478,084	37.6	57.1	5.3	0.0	93,457 D	19.6	0.0
Land	LYONS/Trujillo+	236,606	224,842	0	461,448*	50.9	48.4	0.0	0.7	11,764 R	2.5	0.0
SCJ	Barber/BOSSON	225,366	227,280	0	452,646	49.8	50.2	0.0	0.0	1,914 D	0.4	0.0
CA1	KENNEDY/Tijerina	251,527	203,269	0	454,796	55.3	44.7	0.0	0.0	48,258 R	10.6	0.0
2000												
Pres	Bush/GORE+	286,417	286,783	0	598,605*	47.9	47.9	0.0	4.2	366 d	0.1	0.0
Sen	Redmond/BINGAMAN*	225,517	363,744	0	589,261	38.3	61.7	0.0	0.0	138,227 D	23.5	0.0
CA1	SUTIN/Tijerina	296,027	261,498	0	557,525	53.1	46.9	0.0	0.0	34,529 R	6.2	0.0
CA2	Kennedy/FRY	260,482	300,497	0	560,979	46.4	53.6	0.0	0.0	40,015 D	7.1	0.0
CA3	Ellington/ROBINSON	248,368	256,191	54,926	559,485	44.4	45.8	9.8	0.0	7,823 d	1.4	0.0
CA4	Neumann/CASTILLO	257,978	290,636	0	548,614	47.0	53.0	0.0	0.0	32,658 D	6.0	0.0
1998												
Gov	JOHNSON*/Chavez	271,948	226,755	0	498,703	54.5	45.5	0.0	0.0	45,193 R	9.1	0.0
Sec	Duran/VIGIL-GIRON+/Lopez	223,415	234,546	27,093	485,054	46.1	48.4	5.6	0.0	11,131 d	2.3	0.0
Trs	Garcia/MONTOYA*	221,224	251,795	0	473,019	46.8	53.2	0.0	0.0	30,571 D	6.5	0.0
AtG	Iglesias/MADRID+	236,446	250,487	0	486,933	48.6	51.4	0.0	0.0	14,041 D	2.9	0.0
SCJ	Scott/MAES	233,472	238,325	0	471,797	49.5	50.5	0.0	0.0	4,853 D	1.0	0.0
1996												
Pres	Dole/CLINTON*/Perot	232,751	273,495	32,257	556,074*	41.9	49.2	5.8	3.2	40,744 d	7.3	0.0
Sen	DOMENICI*/Trujillo	357,171	164,356	0	551,821*	64.7	29.8	0.0	5.5	192,815 R	35.0	0.0
Corp	Torres/E. SERNA/Helgeson	210,533	259,811	56,628	526,972	40.0	49.3	10.8	0.0	49,278 d	9.4	0.0
SCJ2	Hartz/P. SERNA	248,350	252,464	0	526,172*	47.2	48.0	0.0	4.8	4,114 d	0.8	0.0
SCJ1	Haltom/MINZNER	207,473	311,074	0	518,547	40.0	60.0	0.0	0.0	103,601 D	20.0	0.0
CA01	ARMIJO/Lopez	266,626	243,949	0	510,575	52.2	47.8	0.0	0.0	22,677 R	4.4	0.0
CA02	Riordan/BUSTAMANTE	236,605	275,787	0	512,392	46.2	53.8	0.0	0.0	39,182 D	7.6	0.0
CA03	Mescall/WECHSLER	238,712	269,860	0	508,572	46.9	53.1	0.0	0.0	31,148 D	6.1	0.0
1994												
Sen	McMillan/BINGAMAN*	213,025	249,989	0	463,014	46.0	54.0	0.0	0.0	36,964 D	8.0	0.0
Gov	JOHNSON/King*/Mondragon	232,945	186,686	47,990	467,621	49.8	39.9	10.3	0.0	46,259 r	9.9	0.0
Sec	Baca-Griego/GONZALES*	200,976	245,625	0	446,601	45.0	55.0	0.0	0.0	44,649 D	10.0	0.0
Aud	Fine/VIGIL*	212,705	231,363	0	444,068	47.9	52.1	0.0	0.0	18,658 D	4.2	0.0
AtG	Bruckner/UDALL*	177,822	277,225	0	455,047	39.1	60.9	0.0	0.0	99,403 D	21.8	0.0
Corp	Helgeson/TRISTANI	197,015	242,861	0	439,876	44.8	55.2	0.0	0.0	45,846 D	10.4	0.0
Land	Spencer/POWELL+/Wolff	181,448	217,659	53,066	452,173	40.1	48.1	11.7	0.0	36,211 d	8.0	0.0
1992												
Pres	Bush*/CLINTON/Perot	212,824	261,617	91,895	569,986*	37.3	45.9	16.1	0.6	48,793 d	8.6	0.0
SCJ	Hartz/FROST	221,959	302,475	0	524,434	42.3	57.7	0.0	0.0	80,516 D	15.4	0.0
CA09	Birge/PICKARD	202,300	315,509	0	517,809	39.1	60.9	0.0	0.0	113,209 D	21.9	0.0
CA10	Barnhart/FLORES	237,308	276,071	0	513,379	46.2	53.8	0.0	0.0	38,763 D	7.6	0.0
1990												
Gov	Bond+/KING	185,692	224,564	0	410,256	45.3	54.7	0.0	0.0	38,872 D	9.5	0.0
Sec	Martinez-Salaza/GONZALES	161,212	218,495	0	379,707	42.5	57.5	0.0	0.0	57,283 D	15.1	0.0
Trs	Corn/KING+	147,387	240,547	0	387,934	38.0	62.0	0.0	0.0	93,160 D	24.0	0.0
Corp	Salazar/SERNA	140,900	237,702	0	378,602	37.2	62.8	0.0	0.0	96,802 D	25.6	0.0
Land	Bigbee/BACA	156,701	238,270	0	394,971	39.7	60.3	0.0	0.0	81,569 D	20.7	0.0
SCJ1	Wilson/FRANCHINI	177,752	208,235	0	385,987	46.1	54.0	0.0	0.0	30,483 D	7.9	0.0
1988												
Pres	BUSH+/Dukakis	270,341	244,497	0	521,287*	51.9	46.9	0.0	1.2	25,844 R	5.0	0.0
Sen	Valentine/BINGAMAN*	186,579	321,983	0	508,562	36.7	63.3	0.0	0.0	135,404 D	26.6	0.0
Corp	McDaniel/GALLEGOS	228,639	247,077	0	475,716	48.1	51.9	0.0	0.0	18,438 D	3.9	0.0
SCJ	McDaniel/BACA	203,232	277,235	0	480,467	42.3	57.7	0.0	0.0	74,003 D	15.4	0.0

POLIDATA © Demographic and Political Guides. All Rights Reserved. Copyright © 2003. www.polidata.us

1. Winner in UPPERCASE. Incumbency: * for incumbent, + for party holding seat.
2. BOLDING indicates unit won by REPUBLICANS. Plurality in UPPERCASE indicates party which won unit won with a majority of the vote.
3. Total column may include votes for minor party candidates. An asterisk (*) follows the Total column if it includes votes not listed (see Rem%).
4. % of Marg(in) is Plurality as % of Total Vote. GOP Index (R-Dex) is the percentage (not percentage points) by which GOP% for County is above(+)/below(-) the State GOP%.
5. Order of races is standardized and may not match ballot order. Selected races only; non-competitive lower-ticket races may be omitted.
6. Each race is assigned a specific bar in the graphs. Top of the ticket is darkest bar and is at the left of each year cluster. Races not listed in the history table will result in blank bars.

Figure 1. TOTAL VOTES.

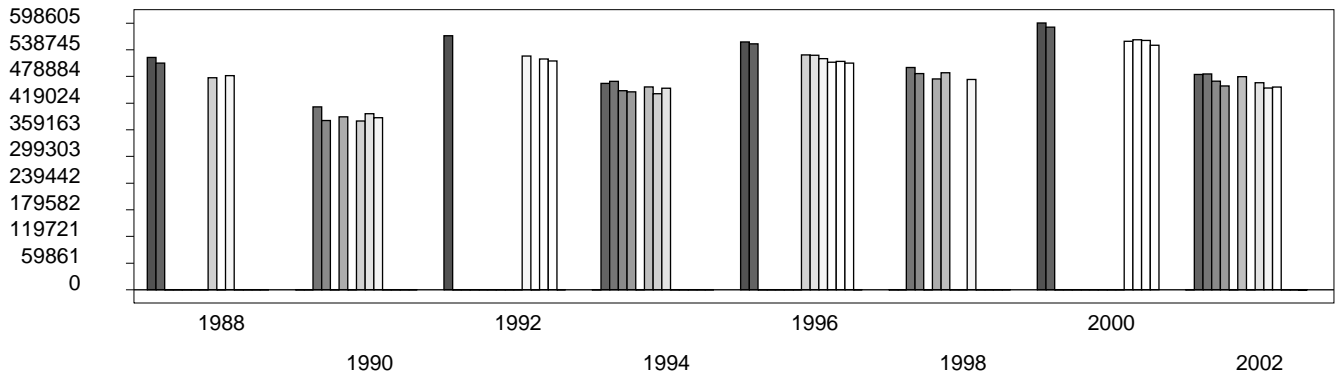


Figure 2. REPUBLICAN %. Refer to GOP-DEX for comparative value.

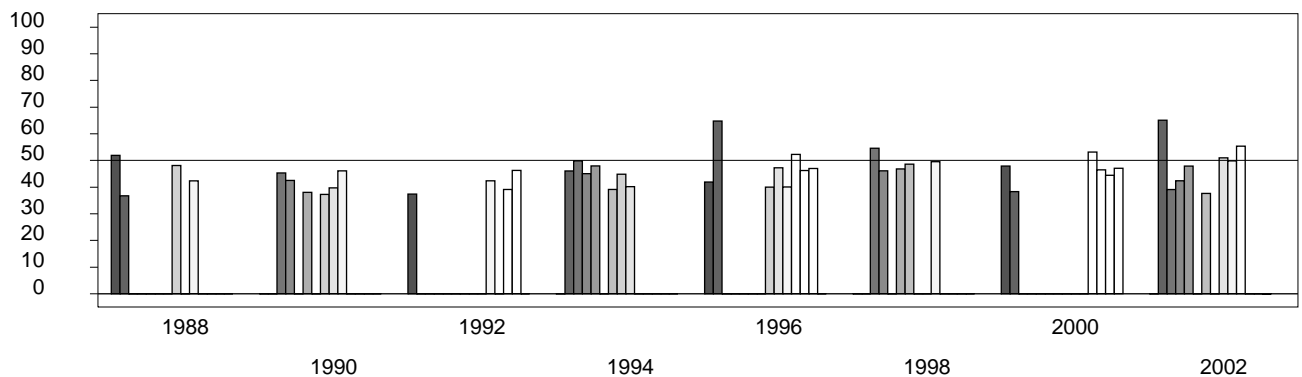


Figure 3. R-DEX: % by which County GOP% is above/below the State GOP%.

