

Race	Candidate GOP/Dem/Ind	GOP Vote	Dem Vote	Ind Vote	Total Vote	GOP %	Dem %	Ind %	Rem %	Plurality/Win	%of Marg	GOP Index
2000												
Pres	Bush/GORE+	286,417	286,783	0	598,605*	47.9	47.9	0.0	4.2	366 d	0.1	0.0
1996												
Pres	Dole/CLINTON*/Perot	232,751	273,495	32,257	556,074*	41.9	49.2	5.8	3.2	40,744 d	7.3	0.0
1992												
Pres	Bush*/CLINTON/Perot	212,824	261,617	91,895	569,986*	37.3	45.9	16.1	0.6	48,793 d	8.6	0.0
1988												
Pres	BUSH+/Dukakis	270,341	244,497	0	521,287*	51.9	46.9	0.0	1.2	25,844 R	5.0	0.0
1984												
Pres	REAGAN*/Mondale	307,101	201,769	0	514,370*	59.7	39.2	0.0	1.1	105,332 R	20.5	0.0
1980												
Pres	REAGAN+/Carter/Anderson	250,779	167,826	29,459	456,971*	54.9	36.7	6.5	2.0	82,953 R	18.2	0.0
1976												
Pres	FORD+/Carter	211,419	201,148	0	418,409*	50.5	48.1	0.0	1.4	10,271 R	2.5	0.0
1972												
Pres	NIXON*/McGovern	235,606	141,084	0	386,241*	61.0	36.5	0.0	2.5	94,522 R	24.5	0.0
1968												
Pres	NIXON/Humphrey+/Wallace	169,692	130,081	25,737	327,350*	51.8	39.7	7.9	0.6	39,611 R	12.1	0.0
1964												
Pres	Goldwater/JOHNSON+	132,838	194,015	0	328,645*	40.4	59.0	0.0	0.6	61,177 D	18.6	0.0
1960												
Pres	Nixon+/KENNEDY	153,733	156,027	0	311,107*	49.4	50.2	0.0	0.4	2,294 D	0.7	0.0
1956												
Pres	EISENHOWER*/Stevenson	146,788	106,098	0	253,926*	57.8	41.8	0.0	0.4	40,690 R	16.0	0.0
1952												
Pres	EISENHOWER/Stevenson+	132,170	105,661	0	238,608*	55.4	44.3	0.0	0.3	26,509 R	11.1	0.0
1948												
Pres	Dewey/TRUMAN+	80,303	105,464	0	187,063*	42.9	56.4	0.0	0.7	25,161 D	13.5	0.0
1944												
Pres	Dewey/ROOSEVELT*	70,688	81,389	0	152,225*	46.4	53.5	0.0	0.0	10,701 D	7.0	0.0
1940												
Pres	Willkie/ROOSEVELT*	79,315	103,699	0	183,258*	43.3	56.6	0.0	0.1	24,384 D	13.3	0.0
1936												
Pres	Landon/ROOSEVELT*	61,727	106,037	0	169,135*	36.5	62.7	0.0	0.8	44,310 D	26.2	0.0
1932												
Pres	Hoover*/ROOSEVELT	54,217	95,089	0	151,606*	35.8	62.7	0.0	1.5	40,872 D	27.0	0.0
1928												
Pres	HOOVER+/Smith	69,708	48,211	0	118,077*	59.0	40.8	0.0	0.1	21,497 R	18.2	0.0
1924												
Pres	COOLIDGE+/Davis/LaFollet	54,745	48,542	0	112,830*	48.5	43.0	0.0	8.5	6,203 r	5.5	0.0
1920												
Pres	HARDING/Cox+	57,634	46,668	0	105,412*	54.7	44.3	0.0	1.1	10,966 R	10.4	0.0

POLIDATA © Demographic and Political Guides. All Rights Reserved. Copyright © 2003. www.polidata.us

1. Winner in UPPERCASE. Incumbency: * for incumbent, + for party holding seat.

2. BOLDING indicates unit won by REPUBLICANS. Plurality in UPPERCASE indicates party which won unit won with a majority of the vote.

3. Total column may include votes for minor party candidates. An asterisk (*) follows the Total column if it includes votes not listed (see Rem%).

4. % of Marg(in) is Plurality as % of Total Vote. GOP Index (R-Dex) is the percentage (not percentage points) by which GOP% for County is above(+)/below(-) the State GOP%.

5. Order of races is standardized and may not match ballot order. Selected races only; non-competitive lower-ticket races may be omitted.

6. Each race is assigned a specific bar in the graphs. Top of the ticket is darkest bar and is at the left of each year cluster. Races not listed in the history table will result in blank bars.

Figure 1. TOTAL VOTES.

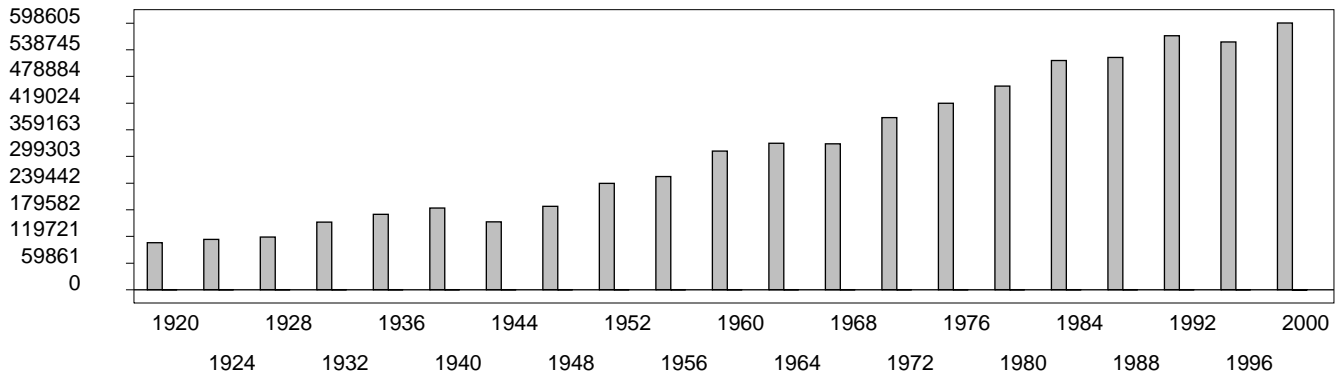


Figure 2. REPUBLICAN %. Refer to GOP-DEX for comparative value.

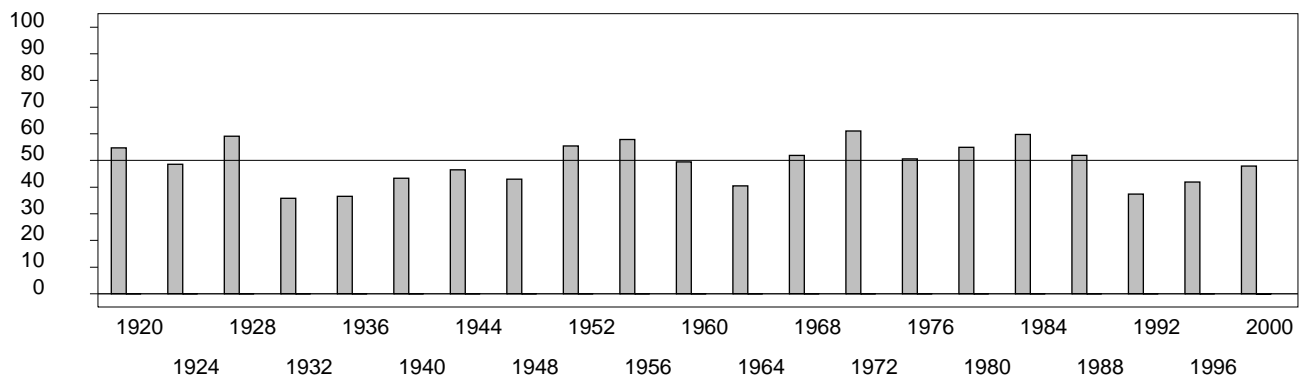


Figure 3. R-DEX: % by which County GOP% is above/below the State GOP%.



1. Winner in UPPERCASE. Incumbency: * for incumbent, + for party holding seat.
2. BOLDING indicates unit won by REPUBLICANS. Plurality in UPPERCASE indicates party which won unit won with a majority of the vote.
3. Total column may include votes for minor party candidates. An asterisk (*) follows the Total column if it includes votes not listed (see Rem%).
4. % of Marg(in) is Plurality as % of Total Vote. GOP Index (R-Dex) is the percentage (not percentage points) by which GOP% for County is above(+)/below(-) the State GOP%.
5. Order of races is standardized and may not match ballot order. Selected races only; non-competitive lower-ticket races may be omitted.
6. Each race is assigned a specific bar in the graphs. Top of the ticket is darkest bar and is at the left of each year cluster. Races not listed in the history table will result in blank bars.

[35000VHB-psvhy21-CB20]