

Race	Candidate GOP/Dem/Ind	GOP Vote	Dem Vote	Ind Vote	Total Vote	GOP %	Dem %	Ind %	Rem %	Plurality/Win	%of Marg	GOP Index	
2002													
Gov	PATAKI*/McCall/Galisano	2,262,255	1,534,064	654,016	4,579,078*	49.4	33.5	14.3	2.8	728,191	r	15.9	0.0
Comp	Faso/HEVESI+	1,933,104	2,095,913	0	4,157,487*	46.5	50.4	0.0	3.1	162,809	D	3.9	0.0
AtG	Irizarry/SPITZER*	1,234,899	2,744,302	0	4,131,437*	29.9	66.4	0.0	3.7	1,509,403	D	36.5	0.0
2000													
Pres	Bush/GORE+	2,403,374	4,107,697	0	6,820,208*	35.2	60.2	0.0	4.5	1,704,323	D	25.0	0.0
Sen	Lazio/CLINTON+	2,915,730	3,747,310	0	6,776,799*	43.0	55.3	0.0	1.7	831,580	D	12.3	0.0
1998													
Sen	D' Amato*/SCHUMER	2,058,988	2,551,065	0	4,670,805*	44.1	54.6	0.0	1.3	492,077	D	10.5	0.0
Gov	PATAKI*/Vallone/Golisano	2,571,991	1,570,317	364,056	4,735,236*	54.3	33.2	7.7	4.8	1,001,674	R	21.2	0.0
Comp	Blakeman/MCCALL*	1,423,086	2,862,903	0	4,421,252*	32.2	64.8	0.0	3.1	1,439,817	D	32.6	0.0
AtG	Vacco*/SPITZER	2,059,762	2,084,948	0	4,325,396*	47.6	48.2	0.0	4.2	25,186	d	0.6	0.0
1996													
Pres	Dole/CLINTON*/Perot	1,933,492	3,756,177	503,458	6,316,129*	30.6	59.5	8.0	2.0	1,822,685	D	28.9	0.0
1994													
Sen	Castro/MOYNIHAN*	1,988,308	2,646,541	0	4,790,336*	41.5	55.3	0.0	3.3	658,233	D	13.7	0.0
Gov	PATAKI/Cuomo*/Galisano	2,538,702	2,364,904	217,490	5,203,762*	48.8	45.5	4.2	1.6	173,798	r	3.3	0.0
Comp	London+/MCCALL	2,155,759	2,404,404	0	4,642,028*	46.4	51.8	0.0	1.8	248,645	D	5.4	0.0
AtG	VACCO/Burstein+	2,294,528	2,206,188	0	4,656,483*	49.3	47.4	0.0	3.4	88,340	r	1.9	0.0
1992													
Pres	Bush/CLINTON+/Perot	2,346,649	3,444,450	1,090,721	6,926,481*	33.9	49.7	15.8	0.6	1,097,801	d	15.9	0.0
Sen	D' AMATO*/Abrams	3,166,994	3,086,200	0	6,458,826*	49.0	47.8	0.0	3.2	80,794	r	1.3	0.0
1990													
Gov	Rinfret/CUOMO*/London	865,948	2,157,087	827,614	4,056,896*	21.4	53.2	20.4	5.1	1,291,139	D	31.8	0.0
Comp	REGAN*/Bellamy	1,942,911	1,841,826	0	3,945,443*	49.2	46.7	0.0	4.1	101,085	r	2.6	0.0
AtG	Smith/ABRAMS*	1,229,318	2,404,791	0	3,833,300*	32.1	62.7	0.0	5.2	1,175,473	D	30.7	0.0
1988													
Pres	Bush+/DUKAKIS	3,081,871	3,347,882	0	6,485,683*	47.5	51.6	0.0	0.9	266,011	D	4.1	0.0
Sen	McMillan/MOYNIHAN*	1,875,784	4,048,649	0	6,040,924*	31.1	67.0	0.0	1.9	2,172,865	D	36.0	0.0
1986													
Sen	D' AMATO*/Green	2,378,197	1,723,216	0	4,179,447*	56.9	41.2	0.0	1.9	654,981	R	15.7	0.0
Gov	O' Rourke/CUOMO*	1,363,810	2,775,229	0	4,293,971*	31.8	64.6	0.0	3.6	1,411,419	D	32.9	0.0
Comp	REGAN*/Badillo	2,274,547	1,593,174	0	3,976,404*	57.2	40.1	0.0	2.7	681,373	R	17.1	0.0
AtG	King/ABRAMS*	1,344,344	2,548,386	0	3,912,830*	34.4	65.1	0.0	0.5	1,204,042	D	30.8	0.0
1984													
Pres	REAGAN*/Mondale	3,664,763	3,119,609	0	6,806,810*	53.8	45.8	0.0	0.3	545,154	R	8.0	0.0
1982													
Sen	Sullivan/MOYNIHAN*	1,696,761	3,232,146	0	4,967,482*	34.2	65.1	0.0	0.8	1,535,385	D	30.9	0.0
Gov	Lehrman/CUOMO+	2,494,827	2,675,213	0	5,254,705*	47.5	50.9	0.0	1.6	180,386	D	3.4	0.0
Comp	REGAN*/Gallagher	2,714,832	1,842,145	0	4,743,164*	57.2	38.8	0.0	3.9	872,687	R	18.4	0.0
AtG	Sclafani/ABRAMS*	1,560,474	3,056,950	0	4,743,706*	32.9	64.4	0.0	2.7	1,496,476	D	31.5	0.0
1980													
Pres	REAGAN/Carter*/Anderson	2,893,831	2,728,372	467,801	6,201,959*	46.7	44.0	7.5	1.8	165,459	r	2.7	0.0
Sen	D' AMATO+/Holtzman/Javit	2,699,652	2,618,661	664,544	6,014,841*	44.9	43.5	11.1	0.5	80,991	r	1.3	0.0
1978													
Gov	Duryea/CAREY*	2,156,404	2,429,272	0	4,768,319*	45.2	51.0	0.0	3.8	272,868	D	5.7	0.0
Comp	REGAN+/Goldin	2,286,885	2,148,801	0	4,482,670*	51.0	47.9	0.0	1.1	138,084	R	3.1	0.0
AtG	Roth/ABRAMS+	1,973,490	2,352,484	0	4,374,082*	45.1	53.8	0.0	1.1	378,994	D	8.7	0.0
1976													
Pres	Ford+/CARTER	3,100,791	3,389,558	0	6,534,170*	47.5	51.9	0.0	0.7	288,767	D	4.4	0.0
Sen	Buckley*/MOYNIHAN	2,836,633	3,422,594	0	6,318,377*	44.9	54.2	0.0	0.9	585,961	D	9.3	0.0
1974													
Sen	JAVITS*/Clark/Keating	2,340,188	1,973,781	822,584	5,163,600*	45.3	38.2	15.9	0.5	366,407	r	7.1	0.0
Gov	Wilson+/CAREY	2,219,667	3,028,503	0	5,293,176*	41.9	57.2	0.0	0.9	808,836	D	15.3	0.0
AtG	LEFKOWITZ*/Abrams	2,624,637	2,189,654	232,631	5,083,882*	51.6	43.1	4.6	0.7	434,983	R	8.6	0.0

POLIDATA © Demographic and Political Guides. All Rights Reserved. Copyright © 2003. www.polidata.us

1. Winner in UPPERCASE. Incumbency: * for incumbent, + for party holding seat. NY: Lieutenant Governor is elected on same ticket with Governor.

2. BOLDING indicates unit won by REPUBLICANS. Plurality in UPPERCASE indicates party which won unit won with a majority of the vote.

3. Total column may include votes for minor party candidates. An asterisk (*) follows the Total column if it includes votes not listed (see Rem%).

4. % of Marg(in) is Plurality as % of Total Vote. GOP Index (R-Dex) is the percentage (not percentage points) by which GOP% for County is above(+)/below(-) the State GOP%.

5. Order of races is standardized and may not match ballot order. Selected races only; non-competitive lower-ticket races may be omitted.

6. Each race is assigned a specific bar in the graphs. Top of the ticket is darkest bar and is at the left of each year cluster. Races not listed in the history table will result in blank bars.

Figure 1. TOTAL VOTES.

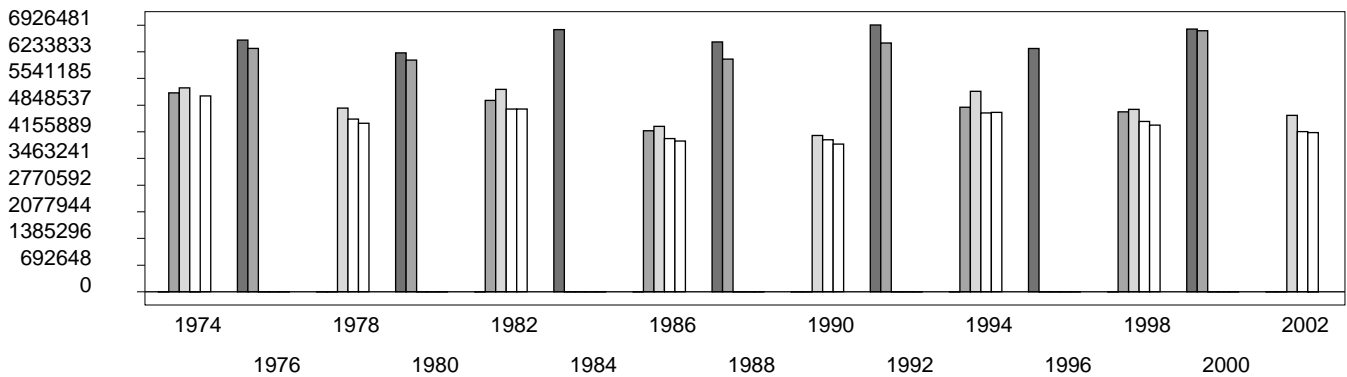


Figure 2. REPUBLICAN %. Refer to GOP-DEX for comparative value.

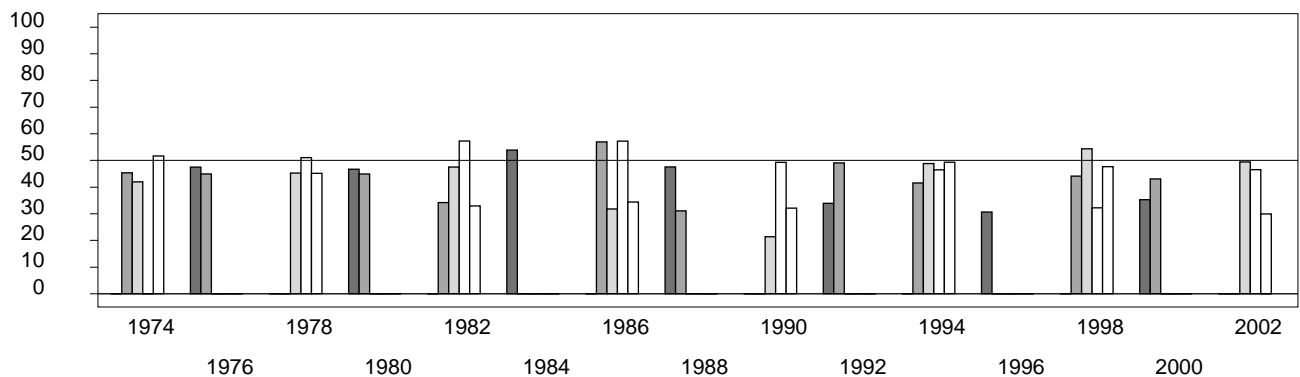


Figure 3. R-DEX: % by which County GOP% is above/below the State GOP%.

