

Race	Candidate GOP/Dem/Ind	GOP Vote	Dem Vote	Ind Vote	Total Vote	GOP %	Dem %	Ind %	Rem %	Plurality/Win	%of Marg	GOP Index
2002												
Sen	DOLE+/Bowles	1,248,664	1,047,983	0	2,330,454*	53.6	45.0	0.0	1.5	200,681 R	8.6	0.0
2000												
Pres	BUSH+/Gore	1,631,163	1,257,692	0	2,910,036*	56.1	43.2	0.0	0.7	373,471 R	12.8	0.0
Gov	Vinroot/EASLEY+	1,360,960	1,530,324	0	2,942,062*	46.3	52.0	0.0	1.7	169,364 D	5.8	0.0
LtG	Cochrane/PERDUE+	1,315,825	1,500,206	0	2,866,383*	45.9	52.3	0.0	1.8	184,381 D	6.4	0.0
Sec	Blake/MARSHALL*	1,265,654	1,512,076	0	2,777,730	45.6	54.4	0.0	0.0	246,422 D	8.9	0.0
Trs	McKoy/MOORE+	1,242,202	1,539,761	0	2,781,963	44.7	55.4	0.0	0.0	297,559 D	10.7	0.0
Aud	Merritt/CAMPBELL*	1,363,890	1,392,211	0	2,756,101	49.5	50.5	0.0	0.0	28,321 D	1.0	0.0
AtG	Boyce/COOPER+	1,310,845	1,446,793	0	2,825,174*	46.4	51.2	0.0	2.4	135,948 D	4.8	0.0
Agrc	Troxler/PHIPPS+	1,386,311	1,418,164	0	2,804,475	49.4	50.6	0.0	0.0	31,853 D	1.1	0.0
Ins	Causey/LONG*	1,222,527	1,590,139	0	2,812,666	43.5	56.5	0.0	0.0	367,612 D	13.1	0.0
Labr	BERRY/Berger+	1,379,417	1,372,165	0	2,751,582	50.1	49.9	0.0	0.0	7,252 R	0.3	0.0
Educ	Barrick/WARD*	1,289,472	1,475,309	0	2,764,781	46.6	53.4	0.0	0.0	185,837 D	6.7	0.0
1998												
Sen	Faircloth*/EDWARDS	945,943	1,029,237	0	2,012,143*	47.0	51.2	0.0	1.8	83,294 D	4.1	0.0
1996												
Pres	DOLE+/Clinton	1,225,938	1,107,849	168,059	2,515,807*	48.7	44.0	6.7	0.6	118,089 r	4.7	0.0
Sen	HELMS*/Gantt	1,345,833	1,173,875	0	2,556,456*	52.6	45.9	0.0	1.4	171,958 R	6.7	0.0
Gov	Hayes/HUNT*	1,097,053	1,436,638	0	2,566,185*	42.8	56.0	0.0	1.3	339,585 D	13.2	0.0
LtG	Arnold/WICKER*	1,094,531	1,339,893	0	2,458,372*	44.5	54.5	0.0	1.0	245,362 D	10.0	0.0
Sec	Petty/MARSHALL+	1,126,701	1,333,994	0	2,494,325*	45.2	53.5	0.0	1.4	207,293 D	8.3	0.0
Trs	Duncan/BOYLES*	1,144,749	1,219,594	0	2,409,086*	47.5	50.6	0.0	1.9	74,845 D	3.1	0.0
Aud	Daly/CAMPBELL*	1,129,050	1,184,665	0	2,373,193*	47.6	49.9	0.0	2.5	55,615 d	2.3	0.0
AtG	Edmunds/EASLEY*	1,007,027	1,453,196	0	2,460,223	40.9	59.1	0.0	0.0	446,169 D	18.1	0.0
Agrc	Davidson/GRAHAM*	980,224	1,409,801	0	2,439,294*	40.2	57.8	0.0	2.0	429,577 D	17.6	0.0
Ins	Causey/LONG*	1,010,782	1,388,894	0	2,447,873*	41.3	56.7	0.0	2.0	378,112 D	15.5	0.0
Labr	Walker/PAYNE*	1,082,537	1,212,057	0	2,377,510*	45.5	51.0	0.0	3.5	129,520 D	5.5	0.0
Educ	Robinson/WARD+	1,103,288	1,243,423	0	2,391,178*	46.1	52.0	0.0	1.9	140,135 D	5.9	0.0
1992												
Pres	BUSH*/Clinton/Perot	1,134,661	1,114,042	357,864	2,611,850*	43.4	42.7	13.7	0.2	20,619 r	0.8	0.0
Sen	FAIRCLOTH/Sanford*	1,297,892	1,194,015	0	2,577,855*	50.4	46.3	0.0	3.3	103,877 R	4.0	0.0
Gov	Gardner+/HUNT	1,121,955	1,368,246	0	2,595,184*	43.2	52.7	0.0	4.1	246,291 D	9.5	0.0
LtG	Pope/WICKER+	1,070,105	1,341,777	0	2,507,592*	42.7	53.5	0.0	3.8	271,672 D	10.8	0.0
Sec	Carrington/EDMISTEN*	1,174,162	1,251,670	0	2,496,016*	47.0	50.2	0.0	2.8	77,508 D	3.1	0.0
Trs	Justus/BOYLES*	1,111,903	1,228,318	0	2,405,346*	46.2	51.1	0.0	2.7	116,415 D	4.8	0.0
Aud	Abermethyl/CAMPBELL+	1,107,770	1,260,315	0	2,368,085	46.8	53.2	0.0	0.0	152,545 D	6.4	0.0
AtG	Dean/EASLEY+	900,573	1,530,858	0	2,478,620*	36.3	61.8	0.0	1.9	630,285 D	25.4	0.0
Agrc	Tew/GRAHAM*	899,774	1,463,744	0	2,420,921*	37.2	60.5	0.0	2.4	563,970 D	23.3	0.0
Ins	Causey/LONG*	1,026,448	1,333,273	0	2,425,832*	42.3	55.0	0.0	2.7	306,825 D	12.7	0.0
Labr	Dollar/PAYNE+	1,011,778	1,290,031	0	2,368,457*	42.7	54.5	0.0	2.8	278,253 D	11.8	0.0
Educ	Little/ETHERIDGE*	1,041,663	1,299,927	0	2,416,411*	43.1	53.8	0.0	3.1	258,264 D	10.7	0.0
1990												
Sen	HELMS*/Gantt	1,086,921	981,245	0	2,068,166	52.6	47.5	0.0	0.0	105,676 R	5.1	0.0
1988												
Pres	BUSH+/Dukakis	1,237,258	890,167	0	2,134,370*	58.0	41.7	0.0	0.3	347,091 R	16.3	0.0
Gov	MARTIN*/Jordan	1,222,338	957,687	0	2,180,025	56.1	43.9	0.0	0.0	264,651 R	12.1	0.0
LtG	GARDNER/Rand+	1,072,002	1,044,917	0	2,116,919	50.6	49.4	0.0	0.0	27,085 R	1.3	0.0
Sec	Carrington/EDMISTEN+	1,004,660	1,082,533	0	2,087,193	48.1	51.9	0.0	0.0	77,873 D	3.7	0.0
Trs	Coward/BOYLES*	938,347	1,056,215	0	1,994,562	47.1	53.0	0.0	0.0	117,868 D	5.9	0.0
Aud	Garner/RENFROW*	958,551	1,035,768	0	1,994,319	48.1	51.9	0.0	0.0	77,217 D	3.9	0.0
AtG	Wilson/THORNBURG*	887,132	1,146,777	0	2,033,909	43.6	56.4	0.0	0.0	259,645 D	12.8	0.0
Agrc	Tew/GRAHAM*	830,045	1,182,800	0	2,012,845	41.2	58.8	0.0	0.0	352,755 D	17.5	0.0
Ins	Rednour/LONG*	864,459	1,151,049	0	2,015,508	42.9	57.1	0.0	0.0	286,590 D	14.2	0.0
Labr	Levy/BROOKS*	918,475	1,069,358	0	1,987,833	46.2	53.8	0.0	0.0	150,883 D	7.6	0.0
Educ	Rogers/ETHERIDGE+	910,494	1,076,216	0	1,986,710	45.8	54.2	0.0	0.0	165,722 D	8.3	0.0

POLIDATA © Demographic and Political Guides. All Rights Reserved. Copyright © 2003. www.polidata.us

1. Statewide Winner in UPPERCASE. Incumbency: * for incumbent, + for party holding seat.

2. BOLDING indicates unit won by REPUBLICANS. Plurality in UPPERCASE indicates unit won with a majority of the vote.

3. Total column may include votes for minor party candidates. An asterisk (*) follows the Total column if it includes votes not listed (see Rem%).

4. % of Marg(in) is Plurality as % of Total Vote. GOP Index (R-Dex) is the percentage (not percentage points) by which GOP% for County is above(+)/below(-) the State GOP%.

5. Order of races is standardized and may not match ballot order. Selected races only; non-competitive lower-ticket races may be omitted.

6. Each race is assigned a specific bar in the graphs. Top of the ticket is darkest bar and is at the left of each year cluster. Races not listed in the history table will result in blank bars.

Figure 1. TOTAL VOTES.

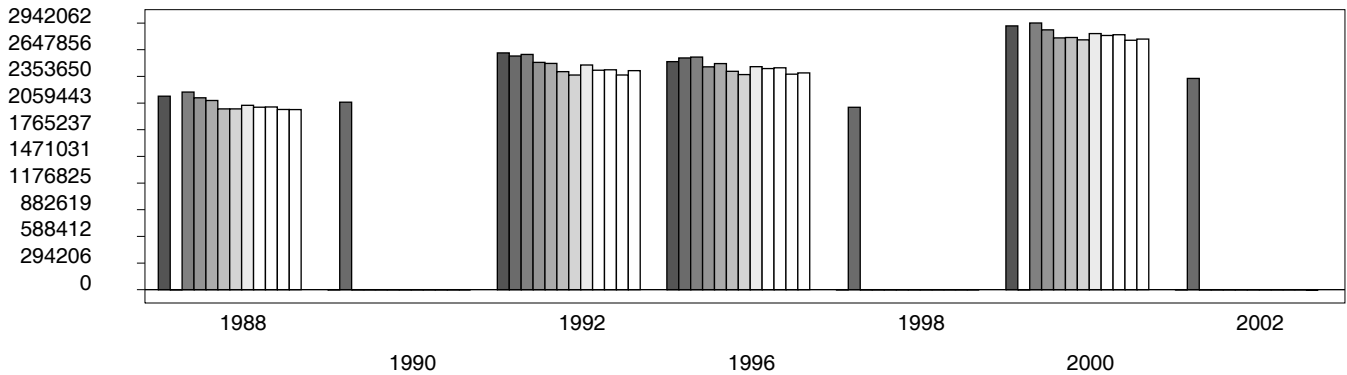


Figure 2. REPUBLICAN %. Refer to GOP-DEX for comparative value.

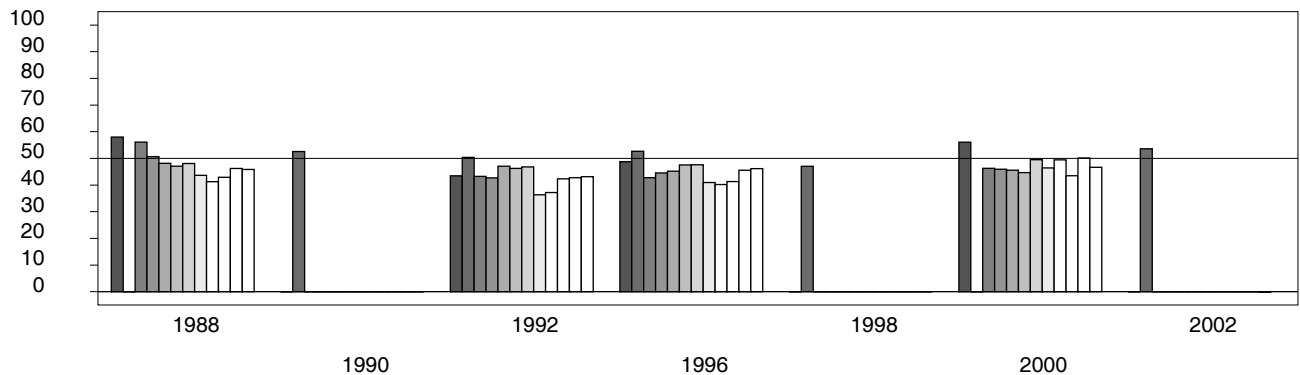


Figure 3. R-DEX: % by which County GOP% is above/below the State GOP%.



1. Statewide Winner in UPPERCASE. Incumbency: * for incumbent, + for party holding seat.

2. BOLDING indicates unit won by REPUBLICANS. Plurality in UPPERCASE indicates unit won with a majority of the vote.

3. Total column may include votes for minor party candidates. An asterisk (*) follows the Total column if it includes votes not listed (see Rem%).

4. % of Marg(in) is Plurality as % of Total Vote. GOP Index (R-Dex) is the percentage (not percentage points) by which GOP% for County is above(+)/below(-) the State GOP%.

5. Order of races is standardized and may not match ballot order. Selected races only; non-competitive lower-ticket races may be omitted.

6. Each race is assigned a specific bar in the graphs. Top of the ticket is darkest bar and is at the left of each year cluster. Races not listed in the history table will result in blank bars.