

Race	Candidate GOP/Dem/Ind	GOP Vote	Dem Vote	Ind Vote	Total Vote	GOP %	Dem %	Ind %	Rem %	Plurality/Win	%of Marg	GOP Index
2000												
Pres	BUSH+/Gore	1,631,163	1,257,692	0	2,910,036*	56.1	43.2	0.0	0.7	373,471 R	12.8	0.0
1996												
Pres	DOLE+/Clinton	1,225,938	1,107,849	168,059	2,515,807*	48.7	44.0	6.7	0.6	118,089 r	4.7	0.0
1992												
Pres	BUSH*/Clinton/Perot	1,134,661	1,114,042	357,864	2,611,850*	43.4	42.7	13.7	0.2	20,619 r	0.8	0.0
1988												
Pres	BUSH+/Dukakis	1,237,258	890,167	0	2,134,370*	58.0	41.7	0.0	0.3	347,091 R	16.3	0.0
1984												
Pres	REAGAN*/Mondale	1,346,481	824,287	0	2,175,361*	61.9	37.9	0.0	0.2	522,194 R	24.0	0.0
1980												
Pres	REAGAN/Carter*/Anderson	915,018	875,635	52,800	1,855,833*	49.3	47.2	2.9	0.7	39,383 r	2.1	0.0
1976												
Pres	Ford+/CARTER	741,960	927,365	0	1,678,686*	44.2	55.2	0.0	0.6	185,405 D	11.0	0.0
1972												
Pres	NIXON/McGovern	1,054,889	438,705	0	1,518,612*	69.5	28.9	0.0	1.7	616,184 R	40.6	0.0
1968												
Pres	NIXON/Humphrey+/Wallace	627,192	464,113	496,188	1,587,493	39.5	29.2	31.3	0.0	131,004 r	8.3	0.0
1964												
Pres	Goldwater/JOHNSON+	624,844	800,139	0	1,424,983	43.9	56.2	0.0	0.0	175,295 D	12.3	0.0
1960												
Pres	Nixon/KENNEDY+	655,420	713,136	0	1,368,556	47.9	52.1	0.0	0.0	57,716 D	4.2	0.0
1956												
Pres	Eisenhower/STEVENSON*	575,062	590,530	0	1,165,592	49.3	50.7	0.0	0.0	15,468 D	1.3	0.0
1952												
Pres	Eisenhower/STEVENSON+	558,107	652,803	0	1,210,910	46.1	53.9	0.0	0.0	94,696 D	7.8	0.0
1948												
Pres	Dewey/TRUMAN+/Thurmond~	258,572	459,070	69,652	791,209*	32.7	58.0	8.8	0.5	200,498 D	25.3	0.0
1944												
Pres	Dewey/ROOSEVELT*	263,155	527,399	0	790,554	33.3	66.7	0.0	0.0	264,244 D	33.4	0.0
1940												
Pres	Willkie/ROOSEVELT*	213,633	609,015	0	822,648	26.0	74.0	0.0	0.0	395,382 D	48.1	0.0
1936												
Pres	Landon/ROOSEVELT*	223,294	616,141	0	839,469*	26.6	73.4	0.0	0.0	392,847 D	46.8	0.0
1932												
Pres	Hoover*/ROOSEVELT	208,344	497,566	0	711,498*	29.3	69.9	0.0	0.8	289,222 D	40.7	0.0
1928												
Pres	HOOVER/Smith+	348,923	286,227	0	635,150	54.9	45.1	0.0	0.0	62,696 R	9.9	0.0
1924												
Pres	Coolidge/DAVIS+	190,754	284,190	0	481,608*	39.6	59.0	0.0	1.4	93,436 D	19.4	0.0
1920												
Pres	Harding/COX+	232,819	305,367	0	538,649*	43.2	56.7	0.0	0.0	72,548 D	13.5	0.0

POLIDATA © Demographic and Political Guides. All Rights Reserved. Copyright © 2003. www.polidata.us

1. Statewide Winner in UPPERCASE. Incumbency: * for incumbent, + for party holding seat.

2. BOLDING indicates unit won by REPUBLICANS. Plurality in UPPERCASE indicates unit won with a majority of the vote.

3. Total column may include votes for minor party candidates. An asterisk (*) follows the Total column if it includes votes not listed (see Rem%).

4. % of Marg(in) is Plurality as % of Total Vote. GOP Index (R-Dex) is the percentage (not percentage points) by which GOP% for County is above(+)/below(-) the State GOP%.

5. Order of races is standardized and may not match ballot order. Selected races only; non-competitive lower-ticket races may be omitted.

6. Each race is assigned a specific bar in the graphs. Top of the ticket is darkest bar and is at the left of each year cluster. Races not listed in the history table will result in blank bars.

Figure 1. TOTAL VOTES.

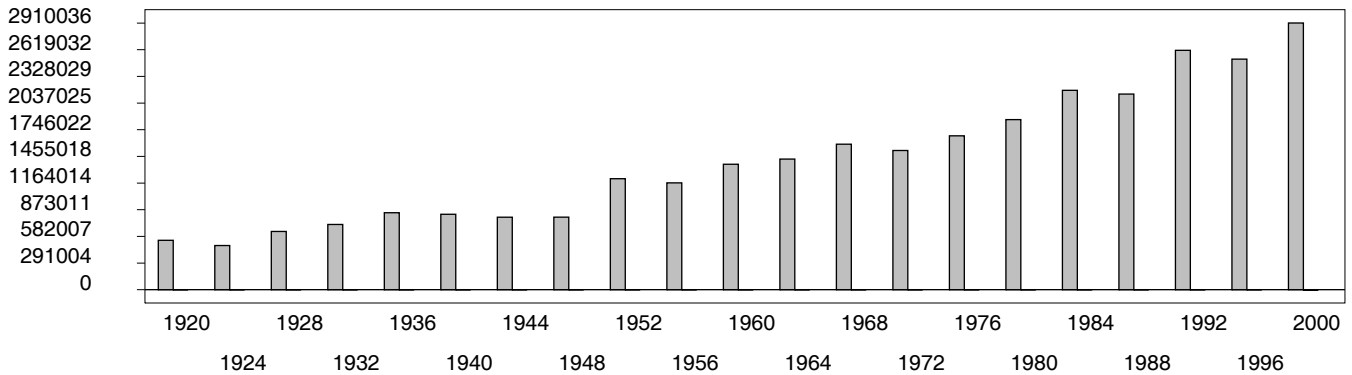


Figure 2. REPUBLICAN %. Refer to GOP-DEX for comparative value.

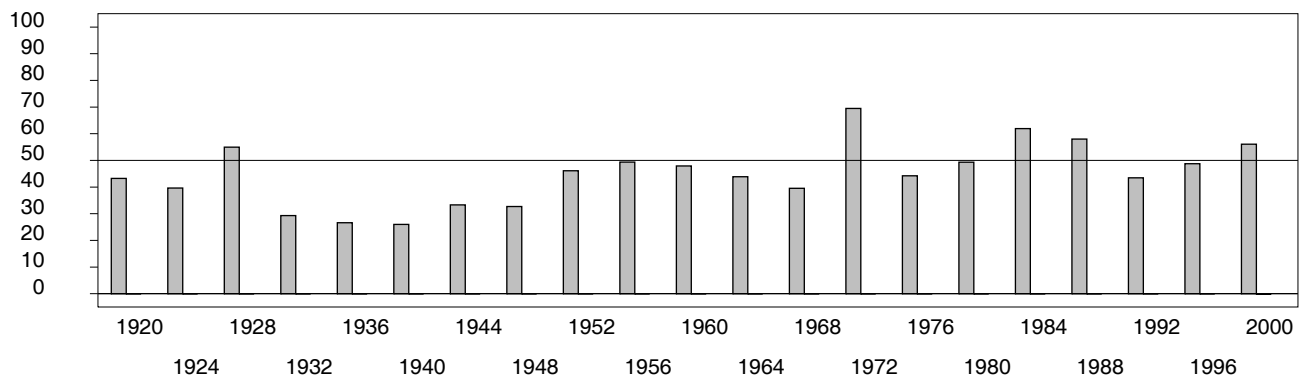


Figure 3. R-DEX: % by which County GOP% is above/below the State GOP%.



1. Statewide Winner in UPPERCASE. Incumbency: * for incumbent, + for party holding seat.

2. BOLDING indicates unit won by REPUBLICANS. Plurality in UPPERCASE indicates unit won with a majority of the vote.

3. Total column may include votes for minor party candidates. An asterisk (*) follows the Total column if it includes votes not listed (see Rem%).

4. % of Marg(in) is Plurality as % of Total Vote. GOP Index (R-Dex) is the percentage (not percentage points) by which GOP% for County is above(+)/below(-) the State GOP%.

5. Order of races is standardized and may not match ballot order. Selected races only; non-competitive lower-ticket races may be omitted.

6. Each race is assigned a specific bar in the graphs. Top of the ticket is darkest bar and is at the left of each year cluster. Races not listed in the history table will result in blank bars.