

Race	Candidate GOP/Dem/Ind	GOP Vote	Dem Vote	Ind Vote	Total Vote	GOP %	Dem %	Ind %	Rem %	Plurality/Win	%of Marg	GOP Index
2002												
Gov	TAFT*/Hagan	1,865,007	1,236,924	0	3,228,617*	57.8	38.3	0.0	3.9	628,083 R	19.5	0.0
AtG	PETRO+/Herrington	2,007,411	1,123,318	0	3,130,729	64.1	35.9	0.0	0.0	884,093 R	28.2	0.0
Aud	MONTGOMERY+/Smith	2,010,022	1,114,957	0	3,124,979	64.3	35.7	0.0	0.0	895,065 R	28.6	0.0
Sec	BLACKWELL*/Flannery	1,827,995	1,256,428	0	3,084,423	59.3	40.7	0.0	0.0	571,567 R	18.5	0.0
Trs	DETERS*/Boyle	1,666,844	1,459,113	0	3,125,957	53.3	46.7	0.0	0.0	207,731 R	6.6	0.0
SCT1	O' CONNOR+/Black	1,709,763	1,276,497	0	2,986,260	57.3	42.8	0.0	0.0	433,266 R	14.5	0.0
SCT2	STRATTON*/Burnside	1,599,165	1,290,412	0	2,889,577	55.3	44.7	0.0	0.0	308,753 R	10.7	0.0
2000												
Pres	BUSH/Gore+	2,351,209	2,186,190	0	4,705,447*	50.0	46.5	0.0	3.6	165,019 r	3.5	0.0
Sen	DEWINE*/Celeste	2,666,736	1,597,122	0	4,452,062*	59.9	35.9	0.0	4.2	1,069,614 R	24.0	0.0
SCT1	COOK*/Black	2,014,274	1,869,060	0	3,883,334	51.9	48.1	0.0	0.0	145,214 R	3.7	0.0
SCT2	O' Donnell/RESNICK*	1,740,516	2,312,073	0	4,052,589	43.0	57.1	0.0	0.0	571,557 D	14.1	0.0
1998												
Sen	VOINOVICH/Boyle+	1,922,087	1,482,054	0	3,404,141	56.5	43.5	0.0	0.0	440,033 R	12.9	0.0
Gov	TAFT+/Fisher	1,678,721	1,498,956	0	3,354,213*	50.1	44.7	0.0	5.3	179,765 R	5.4	0.0
AtG	MONTGOMERY*/Cordray	2,037,864	1,240,102	0	3,277,966	62.2	37.8	0.0	0.0	797,762 R	24.3	0.0
Aud	PETRO*/Strike	1,975,793	1,191,250	0	3,167,043	62.4	37.6	0.0	0.0	784,543 R	24.8	0.0
Sec	BLACKWELL+/Tavares	1,789,105	1,404,081	0	3,193,186	56.0	44.0	0.0	0.0	385,024 R	12.1	0.0
Trs	DETERS+/Donofrio	1,719,133	1,472,940	0	3,192,073	53.9	46.1	0.0	0.0	246,193 R	7.7	0.0
SCT1	Powell/SWEENEY*	1,049,561	1,677,791	0	2,727,352	38.5	61.5	0.0	0.0	628,230 D	23.0	0.0
1996												
Pres	Dole/CLINTON*/Perot	1,859,883	2,148,222	483,207	4,534,434*	41.0	47.4	10.7	1.0	288,339 d	6.4	0.0
SCT2	STRATTON/Bettman	2,016,264	1,427,947	0	3,444,211	58.5	41.5	0.0	0.0	588,317 R	17.1	0.0
1994												
Sen	DEWINE/Hyatt+/Slovenec	1,836,556	1,348,213	252,031	3,436,800	53.4	39.2	7.3	0.0	488,343 R	14.2	0.0
Gov	VOINOVICH*/Burch	2,401,572	835,849	0	3,346,166*	71.8	25.0	0.0	3.3	1,565,723 R	46.8	0.0
AtG	MONTGOMERY/Fisher+	1,716,451	1,625,247	0	3,341,698	51.4	48.6	0.0	0.0	91,204 R	2.7	0.0
Aud	PETRO/Sweeney+	1,883,852	1,337,558	0	3,221,410	58.5	41.5	0.0	0.0	546,294 R	17.0	0.0
Sec	TAFT*/Brady	2,116,258	1,150,460	0	3,266,718	64.8	35.2	0.0	0.0	965,798 R	29.6	0.0
Trs	BLACKWELL/Sykes+	1,740,710	1,370,737	0	3,239,117*	53.7	42.3	0.0	3.9	369,973 R	11.4	0.0
SCT2	Harper/RESNICK	1,144,143	1,645,061	0	2,789,204	41.0	59.0	0.0	0.0	500,918 D	18.0	0.0
1992												
Pres	Bush*/CLINTON/Perot	1,894,310	1,984,942	1,036,426	4,939,967*	38.4	40.2	21.0	0.5	90,632 d	1.8	0.0
Sen	DeWine/GLENN*/Grevatt	2,028,245	2,444,375	321,228	4,793,848	42.3	51.0	6.7	0.0	416,130 D	8.7	0.0
SCT1	Painter/SWEENEY	1,838,244	2,008,829	0	3,847,073	47.8	52.2	0.0	0.0	170,585 D	4.4	0.0
SCT2	PFEIFER/Patton	2,015,648	1,785,177	0	3,800,825	53.0	47.0	0.0	0.0	230,471 R	6.1	0.0
C.J.	MOYER/Gorman/Haffey	1,775,570	1,670,200	354,934	3,800,704	46.7	43.9	9.3	0.0	105,370 r	2.8	0.0
1990												
Gov	VOINOVICH/Celebrezze+	1,938,103	1,539,416	0	3,477,519	55.7	44.3	0.0	0.0	398,687 R	11.5	0.0
AtG	Pfeifer/FISHER+	1,678,891	1,680,271	0	3,359,162	50.0	50.0	0.0	0.0	1,380 D	0.0	0.0
Aud	Petro/FERGUSON*	1,580,497	1,768,343	0	3,348,840	47.2	52.8	0.0	0.0	187,846 D	5.6	0.0
Sec	TAFT/Brown*	1,809,416	1,604,058	0	3,413,474	53.0	47.0	0.0	0.0	205,358 R	6.0	0.0
Trs	Brachman/WITHROW*	1,336,761	1,961,127	0	3,297,888	40.5	59.5	0.0	0.0	624,366 D	18.9	0.0
SCT2	WRIGHT/Jones/Haffey	1,319,422	1,255,556	283,883	2,858,861	46.2	43.9	9.9	0.0	63,866 r	2.2	0.0
1988												
Pres	BUSH+/Dukakis	2,416,549	1,939,629	0	4,393,699*	55.0	44.2	0.0	0.9	476,920 R	10.9	0.0
Sen	Voinovich/METZENBAUM*	1,872,716	2,480,038	0	4,352,754	43.0	57.0	0.0	0.0	607,322 D	14.0	0.0
SCT1	Matia/SWEENEY	1,492,256	2,059,402	0	3,551,658	42.0	58.0	0.0	0.0	567,146 D	16.0	0.0
SCT2	George/RESNICK	1,688,281	1,917,510	0	3,605,791	46.8	53.2	0.0	0.0	229,229 D	6.4	0.0

Figure 1. TOTAL VOTES.

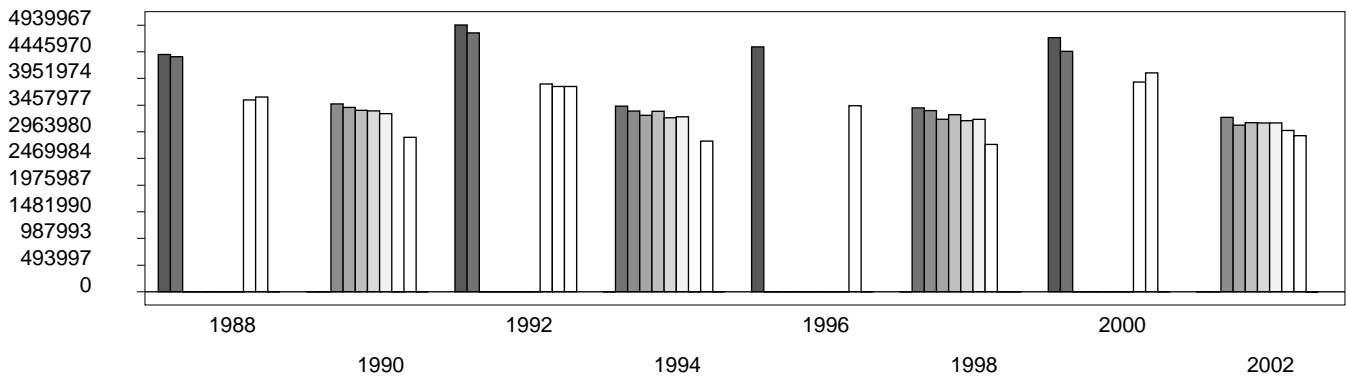


Figure 2. REPUBLICAN %. Refer to GOP-DEX for comparative value.

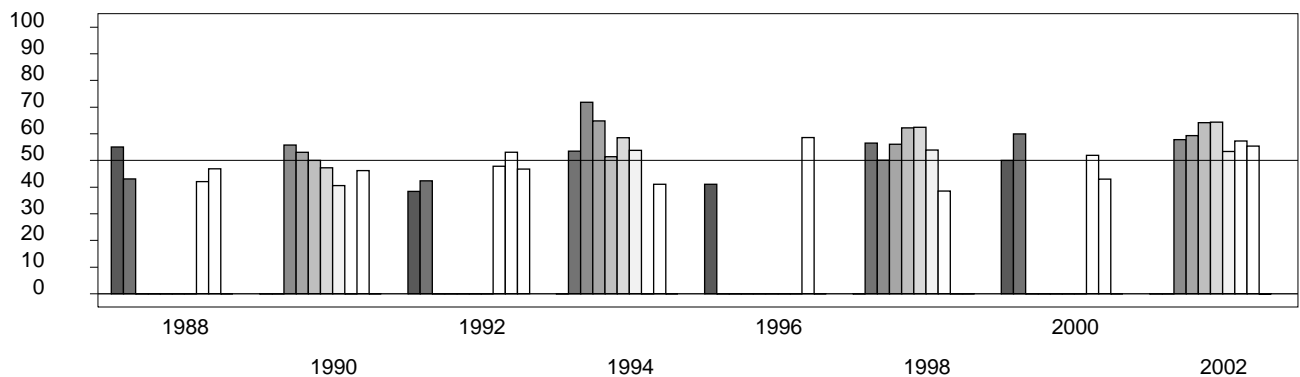


Figure 3. R-DEX: % by which County GOP% is above/below the State GOP%.

