

Race	Candidate GOP/Dem/Ind	GOP Vote	Dem Vote	Ind Vote	Total Vote	GOP %	Dem %	Ind %	Rem %	Plurality/Win	%of Marg	GOP Index
2002												
Sen	SMITH*/Bradbury	712,287	501,898	0	1,265,867*	56.3	39.7	0.0	4.1	210,389 R	16.6	0.0
Gov	Mannix/KULONGOSKI+	581,785	618,004	0	1,257,549*	46.3	49.1	0.0	4.6	36,219 d	2.9	0.0
2000												
Pres	Bush/GORE+	713,577	720,342	0	1,530,549*	46.6	47.1	0.0	6.3	6,765 d	0.4	0.0
Sec	Snodgrass/BRADBURY+	652,803	725,265	0	1,466,909*	44.5	49.4	0.0	6.1	72,462 d	4.9	0.0
Trs	Kvistad/EDWARDS+	593,411	705,273	0	1,401,811*	42.3	50.3	0.0	7.4	111,862 D	8.0	0.0
AtG	Mannix/MYERS*	662,880	715,602	0	1,435,093*	46.2	49.9	0.0	3.9	52,722 d	3.7	0.0
1998												
Sen	Lim/WYDEN*	377,739	682,425	0	1,116,334*	33.8	61.1	0.0	5.0	304,686 D	27.3	0.0
Gov	Sizemore/KITZHABER*	334,001	717,061	0	1,110,844*	30.1	64.6	0.0	5.4	383,060 D	34.5	0.0
1996												
Pres	Dole/CLINTON*/Perot	538,152	649,641	121,221	1,377,760*	39.1	47.2	8.8	5.0	111,489 d	8.1	0.0
Sen	G. SMITH+/Brugerre	677,336	624,370	0	1,358,828*	49.9	46.0	0.0	4.2	52,966 r	3.9	0.0
SenS	G. Smith+/WYDEN	553,519	571,739	0	1,196,608*	46.3	47.8	0.0	6.0	18,220 d	1.5	0.0
Sec	Ash/KEISLING*	451,576	767,946	0	1,298,918*	34.8	59.1	0.0	6.1	316,370 D	24.4	0.0
Trs	Clarno/HILL*	575,047	676,872	0	1,295,191*	44.4	52.3	0.0	3.3	101,825 D	7.9	0.0
AtG	Hoffer/MYERS+	517,035	658,598	0	1,250,295*	41.4	52.7	0.0	6.0	141,563 D	11.3	0.0
1994												
Gov	D. Smith/KITZHABER+	517,874	622,083	0	1,218,589*	42.5	51.1	0.0	6.5	104,209 D	8.6	0.0
Labr	J. ROBERTS/M. Roberts*	582,569	561,437	0	1,144,006	50.9	49.1	0.0	0.0	21,132 R	1.8	0.0
1992												
Pres	Bush/CLINTON+/Perot	475,757	621,314	354,091	1,462,643*	32.5	42.5	24.2	0.8	145,557 d	10.0	0.0
Sen	PACKWOOD*/AuCoin	717,455	639,851	0	1,363,099*	52.6	46.9	0.0	0.4	77,604 R	5.7	0.0
Sec	Miller/KEISLING+	565,852	734,471	0	1,381,931*	41.0	53.2	0.0	5.9	168,619 D	12.2	0.0
Trs	Chen+/HILL	649,242	687,921	0	1,388,133*	46.8	49.6	0.0	3.7	38,679 d	2.8	0.0
AtG	Rodeman+/KULONGOSKI	448,761	853,721	0	1,363,982*	32.9	62.6	0.0	4.5	404,960 D	29.7	0.0
1990												
Sen	HATFIELD*/Lonsdale	590,095	507,743	0	1,097,838	53.8	46.3	0.0	0.0	82,352 R	7.5	0.0
Gov	Frohnmayr/B. ROBERTS+/M	444,646	508,749	144,062	1,112,040*	40.0	45.8	13.0	1.3	64,103 d	5.8	0.0
1988												
Pres	Bush+/DUKAKIS	560,126	616,206	0	1,201,694*	46.6	51.3	0.0	2.1	56,080 D	4.7	0.0
Trs	MEEKER+/Anderson	634,319	439,143	0	1,113,328*	57.0	39.4	0.0	3.6	195,176 R	17.5	0.0
1986												
Sen	PACKWOOD*/Bauman	656,317	375,735	0	1,032,052	63.6	36.4	0.0	0.0	280,582 R	27.2	0.0
Gov	Paulus+/GOLDSCHMIDT	506,986	549,456	0	1,056,442	48.0	52.0	0.0	0.0	42,470 D	4.0	0.0
1984												
Pres	REAGAN*/Mondale	685,700	536,479	0	1,226,527*	55.9	43.7	0.0	0.4	149,221 R	12.2	0.0
Sen	HATFIELD*/Hendriksen	808,152	406,122	0	1,214,274	66.6	33.5	0.0	0.0	402,030 R	33.1	0.0
Sec	Zajonc+/B. ROBERTS/Clark	439,865	518,145	241,995	1,200,005	36.7	43.2	20.2	0.0	78,280 d	6.5	0.0
Trs	RUTHERFORD+/Kerans	677,714	481,872	0	1,159,586	58.4	41.6	0.0	0.0	195,842 R	16.9	0.0
1982												
Gov	ATIYEH*/Kulongoski	639,841	374,316	0	1,041,551*	61.4	35.9	0.0	2.6	265,525 R	25.5	0.0
Labr	Wooten/M. ROBERTS	320,517	600,583	0	962,029*	33.3	62.4	0.0	4.3	280,066 D	29.1	0.0

Figure 1. TOTAL VOTES.

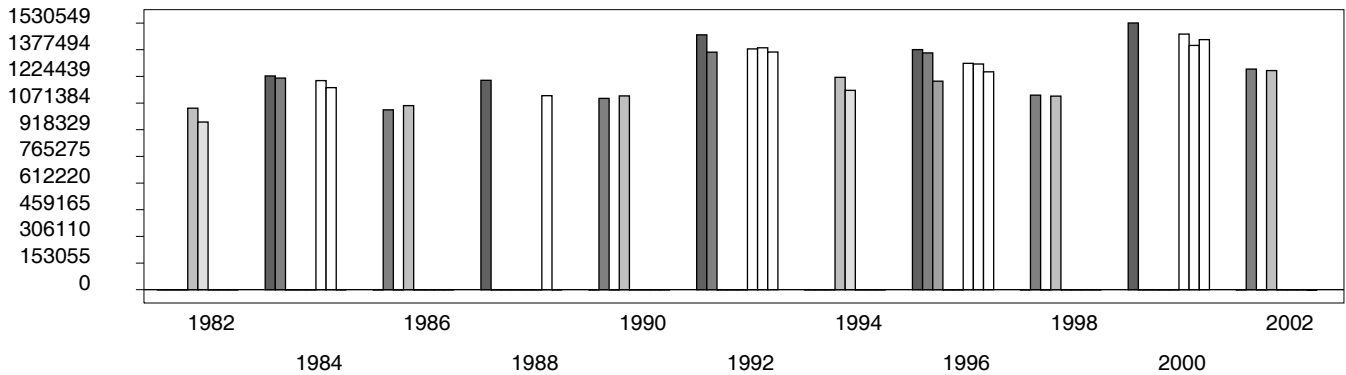


Figure 2. REPUBLICAN %. Refer to GOP-DEX for comparative value.

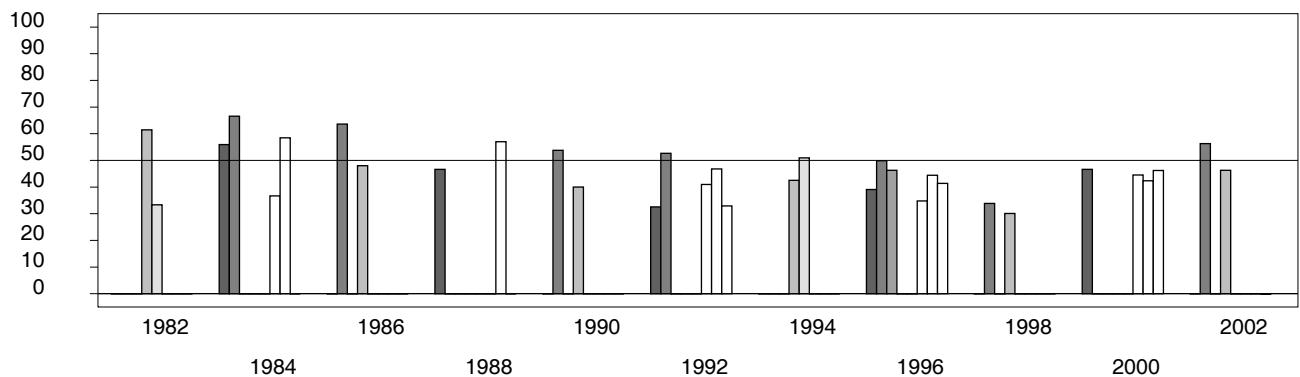


Figure 3. R-DEX: % by which County GOP% is above/below the State GOP%.



1. Statewide Winner in UPPERCASE. Incumbency: * for incumbent, + for party holding seat.

2. BOLDING indicates unit won by REPUBLICANS. Plurality in UPPERCASE indicates unit won with a majority of the vote.

3. Total column may include votes for minor party candidates. An asterisk (*) follows the Total column if it includes votes not listed (see Rem%).

4. % of Marg(in) is Plurality as % of Total Vote. GOP Index (R-Dex) is the percentage (not percentage points) by which GOP% for County is above(+)/below(-) the State GOP%.

5. Order of races is standardized and may not match ballot order. Selected races only; non-competitive lower-ticket races may be omitted.

6. Each race is assigned a specific bar in the graphs. Top of the ticket is darkest bar and is at the left of each year cluster. Races not listed in the history table will result in blank bars.