

Race	Candidate GOP/Dem/Ind	GOP Vote	Dem Vote	Ind Vote	Total Vote	GOP %	Dem %	Ind %	Rem %	Plurality/Win	%of Marg	GOP Index
2000												
Pres	Bush/GORE+	713,577	720,342	0	1,530,549*	46.6	47.1	0.0	6.3	6,765 d	0.4	0.0
1996												
Pres	Dole/CLINTON*/Perot	538,152	649,641	121,221	1,377,760*	39.1	47.2	8.8	5.0	111,489 d	8.1	0.0
1992												
Pres	Bush/CLINTON+/Perot	475,757	621,314	354,091	1,462,643*	32.5	42.5	24.2	0.8	145,557 d	10.0	0.0
1988												
Pres	Bush+/DUKAKIS	560,126	616,206	0	1,201,694*	46.6	51.3	0.0	2.1	56,080 D	4.7	0.0
1984												
Pres	REAGAN*/Mondale	685,700	536,479	0	1,226,527*	55.9	43.7	0.0	0.4	149,221 R	12.2	0.0
1980												
Pres	REAGAN+/Carter/Anderson	571,044	456,890	112,389	1,181,516*	48.3	38.7	9.5	3.5	114,154 r	9.7	0.0
1976												
Pres	FORD+/Carter	492,120	490,407	0	1,029,876*	47.8	47.6	0.0	4.6	1,713 r	0.2	0.0
1972												
Pres	NIXON*/McGovern	486,686	392,760	0	927,946*	52.5	42.3	0.0	5.2	93,926 R	10.1	0.0
1968												
Pres	NIXON/Humphrey+/Wallace	408,433	358,866	49,683	819,622*	49.8	43.8	6.1	0.3	49,567 r	6.1	0.0
1964												
Pres	Goldwater+/JOHNSON	282,779	501,017	0	786,305*	36.0	63.7	0.0	0.3	218,238 D	27.8	0.0
1960												
Pres	NIXON+/Kennedy	408,060	367,402	0	776,421*	52.6	47.3	0.0	0.1	40,658 R	5.2	0.0
1956												
Pres	EISENHOWER*/Stevenson	406,393	329,204	0	736,132*	55.2	44.7	0.0	0.0	77,189 R	10.5	0.0
1952												
Pres	EISENHOWER+/Stevenson	420,815	270,579	0	695,059*	60.5	38.9	0.0	0.5	150,236 R	21.6	0.0
1948												
Pres	DEWEY/Truman+	260,904	243,147	0	524,080*	49.8	46.4	0.0	3.8	17,757 r	3.4	0.0
1944												
Pres	Dewey/ROOSEVELT*	225,365	248,635	0	480,147*	46.9	51.8	0.0	1.3	23,270 D	4.8	0.0
1940												
Pres	Willkie/ROOSEVELT*	219,555	258,415	0	481,240*	45.6	53.7	0.0	0.7	38,860 D	8.1	0.0
1936												
Pres	Landon/ROOSEVELT*	122,706	266,733	0	414,021*	29.6	64.4	0.0	5.9	144,027 D	34.8	0.0
1932												
Pres	Hoover*/ROOSEVELT	136,019	213,871	0	368,751*	36.9	58.0	0.0	5.1	77,852 D	21.1	0.0
1928												
Pres	HOOVER+/Smith	205,341	109,223	0	319,942*	64.2	34.1	0.0	1.7	96,118 R	30.0	0.0
1924												
Pres	COOLIDGE+/Davis/LaFollet	142,579	67,589	68,403	279,488*	51.0	24.2	24.5	0.3	74,176 R	26.5	0.0
1920												
Pres	HARDING+/Cox	143,592	80,019	14,911	238,522	60.2	33.6	6.3	0.0	63,573 R	26.7	0.0

POLIDATA © Demographic and Political Guides. All Rights Reserved. Copyright © 2003. www.polidata.us

1. Statewide Winner in UPPERCASE. Incumbency: * for incumbent, + for party holding seat.

2. BOLDING indicates unit won by REPUBLICANS. Plurality in UPPERCASE indicates unit won with a majority of the vote.

3. Total column may include votes for minor party candidates. An asterisk (*) follows the Total column if it includes votes not listed (see Rem%).

4. % of Marg(in) is Plurality as % of Total Vote. GOP Index (R-Dex) is the percentage (not percentage points) by which GOP% for County is above(+)/below(-) the State GOP%.

5. Order of races is standardized and may not match ballot order. Selected races only; non-competitive lower-ticket races may be omitted.

6. Each race is assigned a specific bar in the graphs. Top of the ticket is darkest bar and is at the left of each year cluster. Races not listed in the history table will result in blank bars.

Figure 1. TOTAL VOTES.

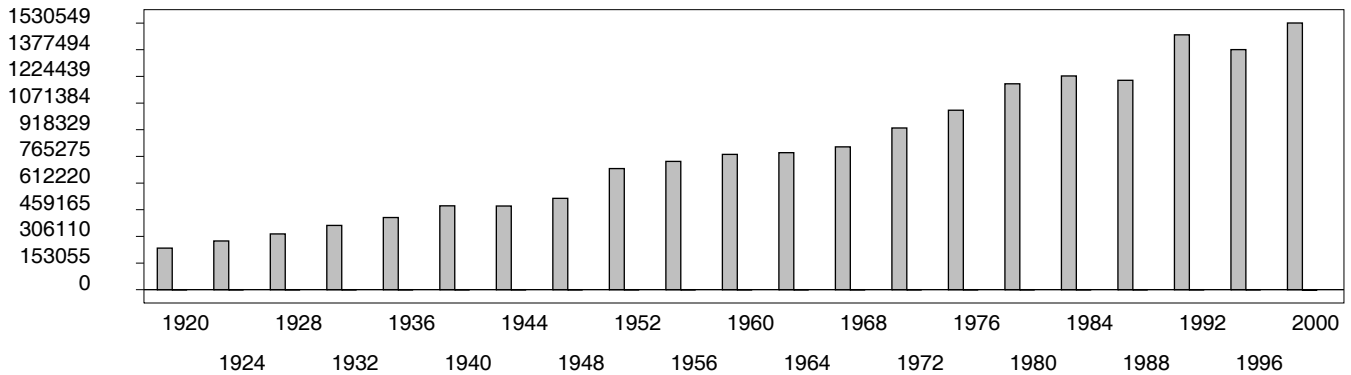


Figure 2. REPUBLICAN %. Refer to GOP-DEX for comparative value.

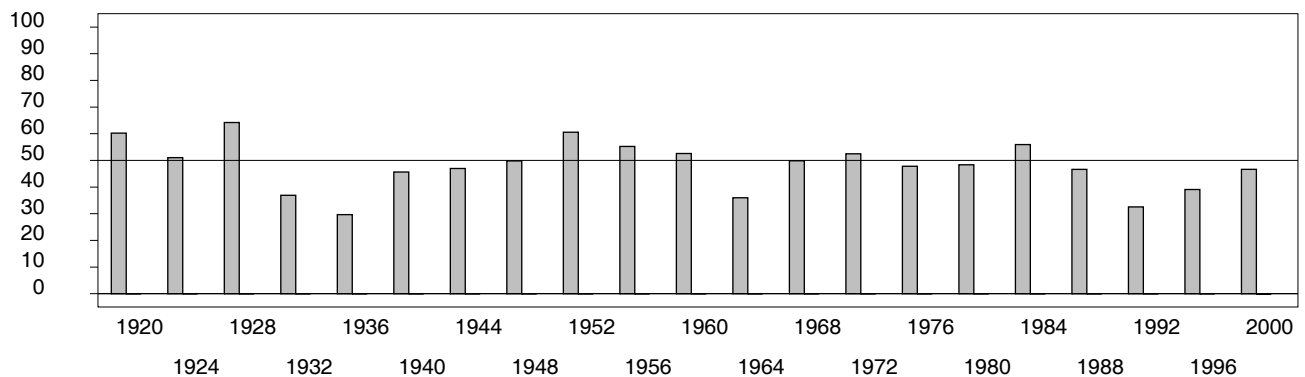


Figure 3. R-DEX: % by which County GOP% is above/below the State GOP%.

