

Race	Candidate GOP/Dem/Ind	GOP Vote	Dem Vote	Ind Vote	Total Vote	GOP %	Dem %	Ind %	Rem %	Plurality/Win	%of Marg	GOP Index	
<b>2000</b>													
Pres	Bush/GORE+	2,281,127	2,485,967	0	4,912,185*	46.4	50.6	0.0	3.0	204,840	D	4.2	0.0
<b>1996</b>													
Pres	Dole/CLINTON*/Perot	1,801,169	2,215,819	430,984	4,501,307*	40.0	49.2	9.6	1.2	414,650	d	9.2	0.0
<b>1992</b>													
Pres	Bush*/CLINTON/Perot	1,791,841	2,239,164	902,667	4,959,810*	36.1	45.2	18.2	0.5	447,323	d	9.0	0.0
<b>1988</b>													
Pres	BUSH+/Dukakis	2,300,087	2,194,944	0	4,536,251*	50.7	48.4	0.0	0.9	105,143	R	2.3	0.0
<b>1984</b>													
Pres	REAGAN*/Mondale	2,584,323	2,228,131	0	4,844,903*	53.3	46.0	0.0	0.7	356,192	R	7.4	0.0
<b>1980</b>													
Pres	REAGAN/Carter*/Anderson	2,261,872	1,937,540	292,921	4,561,501*	49.6	42.5	6.4	1.5	324,332	r	7.1	0.0
<b>1976</b>													
Pres	Ford+/CARTER	2,205,604	2,328,677	0	4,620,787*	47.7	50.4	0.0	1.9	123,073	D	2.7	0.0
<b>1972</b>													
Pres	NIXON/McGovern+	2,714,521	1,796,951	0	4,592,106*	59.1	39.1	0.0	1.8	917,570	R	20.0	0.0
<b>1968</b>													
Pres	Nixon/HUMPHREY+/Wallace	2,090,017	2,259,405	378,582	4,747,928*	44.0	47.6	8.0	0.4	169,388	d	3.6	0.0
<b>1964</b>													
Pres	Goldwater/JOHNSON+	1,673,657	3,130,954	0	4,822,690*	34.7	64.9	0.0	0.4	1,457,297	D	30.2	0.0
<b>1960</b>													
Pres	Nixon+/KENNEDY	2,439,956	2,556,282	0	5,006,541*	48.7	51.1	0.0	0.2	116,326	D	2.3	0.0
<b>1956</b>													
Pres	EISENHOWER*/Stevenson	2,585,252	1,981,769	0	4,576,503*	56.5	43.3	0.0	0.2	603,483	R	13.2	0.0
<b>1952</b>													
Pres	EISENHOWER+/Stevenson	2,415,789	2,146,269	0	4,580,969*	52.7	46.9	0.0	0.4	269,520	R	5.9	0.0
<b>1948</b>													
Pres	DEWEY/Truman+	1,902,197	1,752,426	0	3,735,348*	50.9	46.9	0.0	2.2	149,771	R	4.0	0.0
<b>1944</b>													
Pres	Dewey/ROOSEVELT*	1,835,054	1,940,479	0	3,794,793*	48.4	51.1	0.0	0.5	105,425	D	2.8	0.0
<b>1940</b>													
Pres	Willkie/ROOSEVELT*	1,889,848	2,171,035	0	4,077,887*	46.3	53.2	0.0	0.4	281,187	D	6.9	0.0
<b>1936</b>													
Pres	Landon/ROOSEVELT*	1,690,300	2,353,788	0	4,138,105*	40.9	56.9	0.0	2.3	663,488	D	16.0	0.0
<b>1932</b>													
Pres	HOOVER*/Roosevelt	1,453,540	1,295,948	0	2,858,968*	50.8	45.3	0.0	3.8	157,592	R	5.5	0.0
<b>1928</b>													
Pres	HOOVER+/Smith	2,055,382	1,067,586	0	3,150,612*	65.2	33.9	0.0	0.9	987,796	R	31.4	0.0
<b>1924</b>													
Pres	COOLIDGE+/Davis/LaFollet	1,401,481	409,192	334,046	2,144,719	65.4	19.1	15.6	0.0	992,289	R	46.3	0.0
<b>1920</b>													
Pres	HARDING+/Cox	1,218,215	503,202	0	1,851,248*	65.8	27.2	0.0	7.0	715,013	R	38.6	0.0

POLIDATA © Demographic and Political Guides. All Rights Reserved. Copyright © 2003. www.polidata.us

1. Winner in UPPERCASE. Incumbency: \* for incumbent, + for party holding seat.

2. BOLDING indicates unit won by REPUBLICANS. Plurality in UPPERCASE indicates party which won unit won with a majority of the vote.

3. Total column may include votes for minor party candidates. An asterisk (\*) follows the Total column if it includes votes not listed (see Rem%).

4. % of Marg(in) is Plurality as % of Total Vote. GOP Index (R-Dex) is the percentage (not percentage points) by which GOP% for County is above(+)/below(-) the State GOP%.

5. Order of races is standardized and may not match ballot order. Selected races only; non-competitive lower-ticket races may be omitted.

6. Each race is assigned a specific bar in the graphs. Top of the ticket is darkest bar and is at the left of each year cluster. Races not listed in the history table will result in blank bars.

Figure 1. TOTAL VOTES.

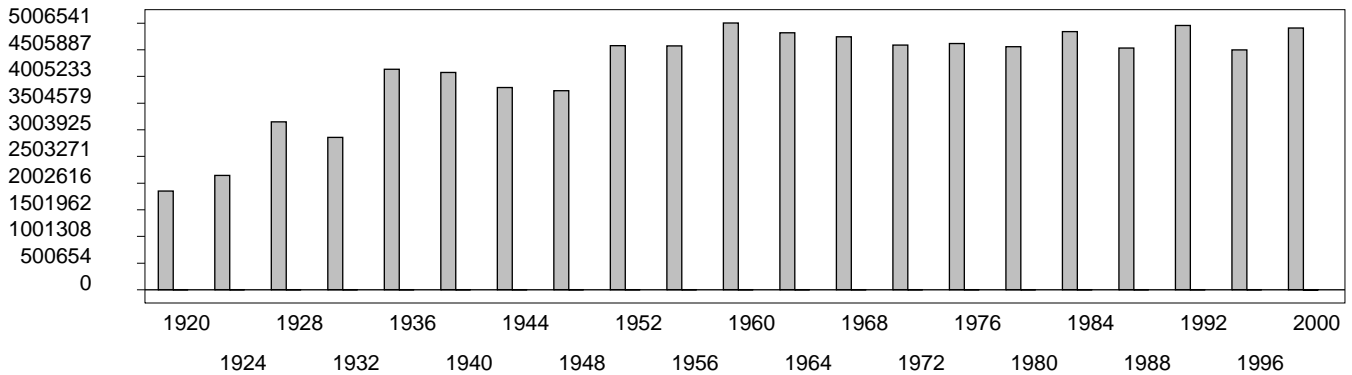


Figure 2. REPUBLICAN %. Refer to GOP-DEX for comparative value.

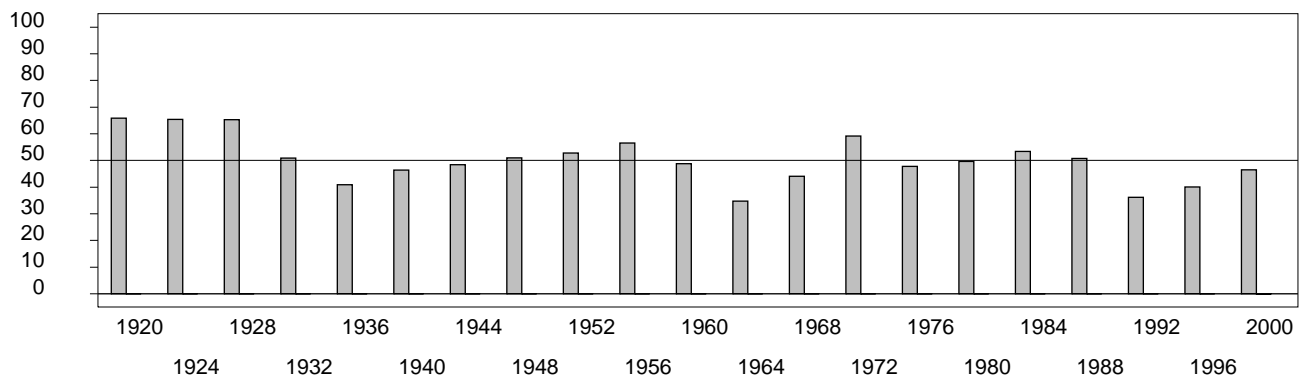


Figure 3. R-DEX: % by which County GOP% is above/below the State GOP%.



1. Winner in UPPERCASE. Incumbency: \* for incumbent, + for party holding seat.
2. BOLDING indicates unit won by REPUBLICANS. Plurality in UPPERCASE indicates party which won unit won with a majority of the vote.
3. Total column may include votes for minor party candidates. An asterisk (\*) follows the Total column if it includes votes not listed (see Rem%).
4. % of Marg(in) is Plurality as % of Total Vote. GOP Index (R-Dex) is the percentage (not percentage points) by which GOP% for County is above(+)/below(-) the State GOP%.
5. Order of races is standardized and may not match ballot order. Selected races only; non-competitive lower-ticket races may be omitted.
6. Each race is assigned a specific bar in the graphs. Top of the ticket is darkest bar and is at the left of each year cluster. Races not listed in the history table will result in blank bars.

[42000VHB-psvhy21-CB23]