

Race	Candidate GOP/Dem/Ind	GOP Vote	Dem Vote	Ind Vote	Total Vote	GOP %	Dem %	Ind %	Rem %	Plurality/Win	%of Marg	GOP Index
<b>2000</b>												
Pres	Bush/GORE+/Nader	130,555	249,508	0	408,498*	32.0	61.1	0.0	7.0	118,953 D	29.1	0.0
<b>1996</b>												
Pres	Dole/CLINTON*/Perot	104,683	233,050	43,723	390,247*	26.8	59.7	11.2	2.3	128,367 D	32.9	0.0
<b>1992</b>												
Pres	Bush/CLINTON+/Perot	131,601	213,299	105,045	453,365*	29.0	47.1	23.2	0.8	81,698 d	18.0	0.0
<b>1988</b>												
Pres	Bush+/DUKAKIS	177,761	225,123	0	404,569*	43.9	55.7	0.0	0.4	47,362 D	11.7	0.0
<b>1984</b>												
Pres	REAGAN/Mondale+	212,080	197,106	0	410,489*	51.7	48.0	0.0	0.3	14,974 R	3.7	0.0
<b>1980</b>												
Pres	Reagan/CARTER*/Anderson	154,793	198,342	59,819	416,072*	37.2	47.7	14.4	0.8	43,549 d	10.5	0.0
<b>1976</b>												
Pres	Ford+/CARTER	181,249	227,636	0	411,170*	44.1	55.4	0.0	0.6	46,387 D	11.3	0.0
<b>1972</b>												
Pres	NIXON/McGovern+	220,383	194,645	0	415,808*	53.0	46.8	0.0	0.2	25,738 R	6.2	0.0
<b>1968</b>												
Pres	Nixon/HUMPHREY+/Wallace	122,359	246,518	15,678	385,000*	31.8	64.0	4.1	0.1	124,159 D	32.3	0.0
<b>1964</b>												
Pres	Goldwater/JOHNSON+	74,615	315,463	0	390,091*	19.1	80.9	0.0	0.0	240,848 D	61.7	0.0
<b>1960</b>												
Pres	Nixon+/KENNEDY	147,502	258,032	0	405,535*	36.4	63.6	0.0	0.0	110,530 D	27.3	0.0
<b>1956</b>												
Pres	EISENHOWER*/Stevenson	225,819	161,790	0	387,609	58.3	41.7	0.0	0.0	64,029 R	16.5	0.0
<b>1952</b>												
Pres	EISENHOWER/Stevenson+	210,935	203,293	0	414,498*	50.9	49.1	0.0	0.0	7,642 R	1.8	0.0
<b>1948</b>												
Pres	Dewey/TRUMAN+	135,787	188,736	0	327,702*	41.4	57.6	0.0	1.0	52,949 D	16.2	0.0
<b>1944</b>												
Pres	Dewey/ROOSEVELT*	123,487	175,356	0	299,276*	41.3	58.6	0.0	0.1	51,869 D	17.3	0.0
<b>1940</b>												
Pres	Willkie/ROOSEVELT*	138,654	182,181	0	321,152*	43.2	56.7	0.0	0.0	43,527 D	13.6	0.0
<b>1936</b>												
Pres	Landon/ROOSEVELT*/Lemke	125,031	164,338	20,909	310,278	40.3	53.0	6.7	0.0	39,307 D	12.7	0.0
<b>1932</b>												
Pres	Hoover/ROOSEVELT+	115,266	146,604	0	266,170*	43.3	55.1	0.0	1.6	31,338 D	11.8	0.0
<b>1928</b>												
Pres	Hoover+/SMITH	117,522	118,973	0	237,194*	49.6	50.2	0.0	0.3	1,451 D	0.6	0.0
<b>1924</b>												
Pres	COOLIDGE+/Davis	125,286	76,606	0	210,115*	59.6	36.5	0.0	3.9	48,680 R	23.2	0.0
<b>1920</b>												
Pres	HARDING+/Cox	107,463	55,062	0	167,981*	64.0	32.8	0.0	3.3	52,401 R	31.2	0.0

POLIDATA © Demographic and Political Guides. All Rights Reserved. Copyright © 2003. www.polidata.us

1. Statewide Winner in UPPERCASE. Incumbency: \* for incumbent, + for party holding seat.

2. BOLDING indicates unit won by REPUBLICANS. Plurality in UPPERCASE indicates unit won with a majority of the vote.

3. Total column may include votes for minor party candidates. An asterisk (\*) follows the Total column if it includes votes not listed (see Rem%).

4. % of Marg(in) is Plurality as % of Total Vote. GOP Index (R-Dex) is the percentage (not percentage points) by which GOP% for County is above(+)/below(-) the State GOP%.

5. Order of races is standardized and may not match ballot order. Selected races only; non-competitive lower-ticket races may be omitted.

6. Each race is assigned a specific bar in the graphs. Top of the ticket is darkest bar and is at the left of each year cluster. Races not listed in the history table will result in blank bars.

Figure 1. TOTAL VOTES.

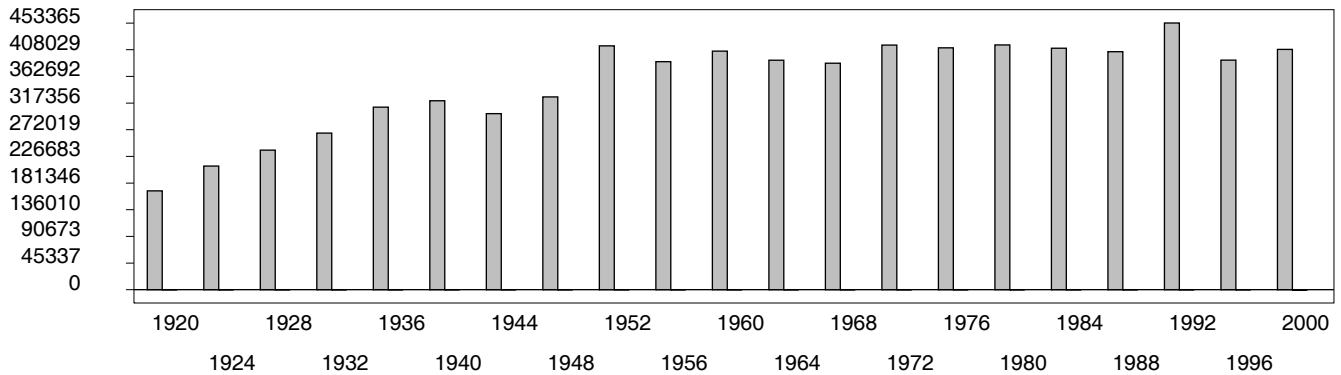


Figure 2. REPUBLICAN %. Refer to GOP-DEX for comparative value.

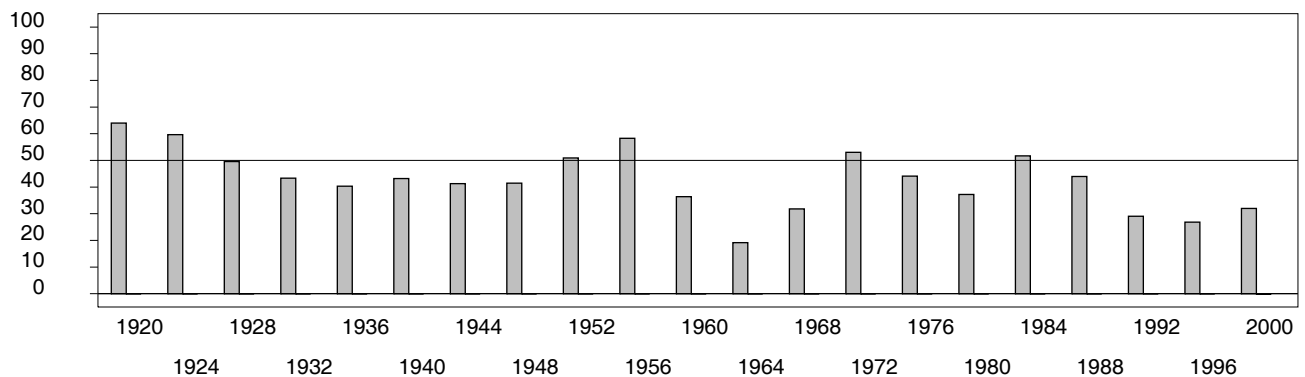


Figure 3. R-DEX: % by which County GOP% is above/below the State GOP%.



1. Statewide Winner in UPPERCASE. Incumbency: \* for incumbent, + for party holding seat.

2. BOLDING indicates unit won by REPUBLICANS. Plurality in UPPERCASE indicates unit won with a majority of the vote.

3. Total column may include votes for minor party candidates. An asterisk (\*) follows the Total column if it includes votes not listed (see Rem%).

4. % of Marg(in) is Plurality as % of Total Vote. GOP Index (R-Dex) is the percentage (not percentage points) by which GOP% for County is above(+)/below(-) the State GOP%.

5. Order of races is standardized and may not match ballot order. Selected races only; non-competitive lower-ticket races may be omitted.

6. Each race is assigned a specific bar in the graphs. Top of the ticket is darkest bar and is at the left of each year cluster. Races not listed in the history table will result in blank bars.