

Race	Candidate GOP/Dem/Ind	GOP Vote	Dem Vote	Ind Vote	Total Vote	GOP %	Dem %	Ind %	Rem %	Plurality/Win	%of Marg	GOP Index
2000												
Pres	BUSH/Gore+	1,061,949	981,720	0	2,073,612*	51.2	47.3	0.0	1.4	80,229 R	3.9	0.0
1996												
Pres	Dole/CLINTON*/Perot	863,530	909,146	105,918	1,894,105*	45.6	48.0	5.6	0.8	45,616 d	2.4	0.0
1992												
Pres	Bush*/CLINTON/Perot	841,300	933,521	199,968	1,982,638*	42.4	47.1	10.1	0.4	92,221 d	4.7	0.0
1988												
Pres	BUSH+/Dukakis	947,233	679,794	0	1,636,250*	57.9	41.6	0.0	0.6	267,439 R	16.3	0.0
1984												
Pres	REAGAN*/Mondale	990,212	711,714	0	1,711,994*	57.8	41.6	0.0	0.6	278,498 R	16.3	0.0
1980												
Pres	REAGAN/Carter*	787,761	783,051	35,991	1,617,616*	48.7	48.4	2.2	0.7	4,710 r	0.3	0.0
1976												
Pres	Ford+/CARTER	633,969	825,879	0	1,476,345*	42.9	55.9	0.0	1.1	191,910 D	13.0	0.0
1972												
Pres	NIXON*/McGovern	813,147	357,293	0	1,201,182*	67.7	29.8	0.0	2.6	455,854 R	38.0	0.0
1968												
Pres	NIXON/Humphrey+/Wallace	472,592	351,233	424,792	1,248,617	37.9	28.1	34.0	0.0	47,800 r	3.8	0.0
1964												
Pres	Goldwater+/JOHNSON	508,965	634,947	0	1,143,946*	44.5	55.5	0.0	0.0	125,982 D	11.0	0.0
1960												
Pres	NIXON+/Kennedy	556,577	481,453	0	1,051,792*	52.9	45.8	0.0	1.3	75,124 R	7.2	0.0
1956												
Pres	EISENHOWER*/Stevenson	462,288	456,507	0	939,404*	49.2	48.6	0.0	2.2	5,781 r	0.6	0.0
1952												
Pres	EISENHOWER/Stevenson+	446,147	443,710	0	892,553*	50.0	49.7	0.0	0.3	2,437 r	0.3	0.0
1948												
Pres	Dewey/TRUMAN+/Thurmond	202,914	270,402	76,967	550,283	36.9	49.1	14.0	0.0	67,488 d	12.3	0.0
1944												
Pres	Dewey/ROOSEVELT*	200,311	308,707	0	509,018	39.4	60.7	0.0	0.0	108,396 D	21.3	0.0
1940												
Pres	Willkie/ROOSEVELT*	169,153	351,601	0	520,754	32.5	67.5	0.0	0.0	182,448 D	35.0	0.0
1936												
Pres	Landon/ROOSEVELT*	147,055	328,083	0	475,138	31.0	69.1	0.0	0.0	181,028 D	38.1	0.0
1932												
Pres	Hoover*/ROOSEVELT	126,752	259,473	0	386,225	32.8	67.2	0.0	0.0	132,721 D	34.4	0.0
1928												
Pres	HOOVER/Smith+	195,388	157,143	0	352,531	55.4	44.6	0.0	0.0	38,245 R	10.8	0.0
1924												
Pres	Coolidge+/DAVIS	130,831	159,339	0	301,030*	43.5	52.9	0.0	3.6	28,508 D	9.5	0.0
1920												
Pres	HARDING/Cox+	219,229	206,558	0	425,787	51.5	48.5	0.0	0.0	12,671 R	3.0	0.0

POLIDATA © Demographic and Political Guides. All Rights Reserved. Copyright © 2003. www.polidata.us

1. Statewide Winner in UPPERCASE. Incumbency: * for incumbent, + for party holding seat.

2. BOLDING indicates unit won by REPUBLICANS. Plurality in UPPERCASE indicates unit won with a majority of the vote.

3. Total column may include votes for minor party candidates. An asterisk (*) follows the Total column if it includes votes not listed (see Rem%).

4. % of Marg(in) is Plurality as % of Total Vote. GOP Index (R-Dex) is the percentage (not percentage points) by which GOP% for County is above(+)/below(-) the State GOP%.

5. Order of races is standardized and may not match ballot order. Selected races only; non-competitive lower-ticket races may be omitted.

6. Each race is assigned a specific bar in the graphs. Top of the ticket is darkest bar and is at the left of each year cluster. Races not listed in the history table will result in blank bars.

Figure 1. TOTAL VOTES.

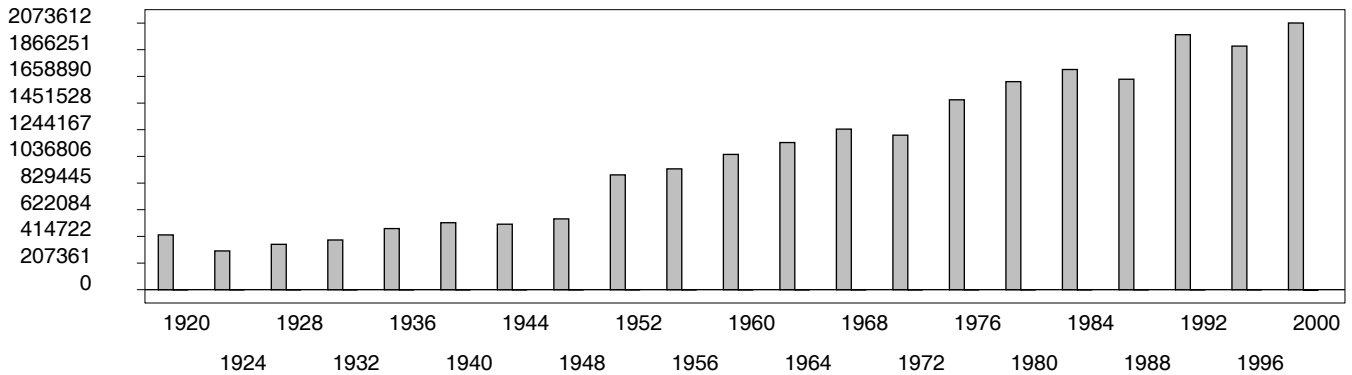


Figure 2. REPUBLICAN %. Refer to GOP-DEX for comparative value.

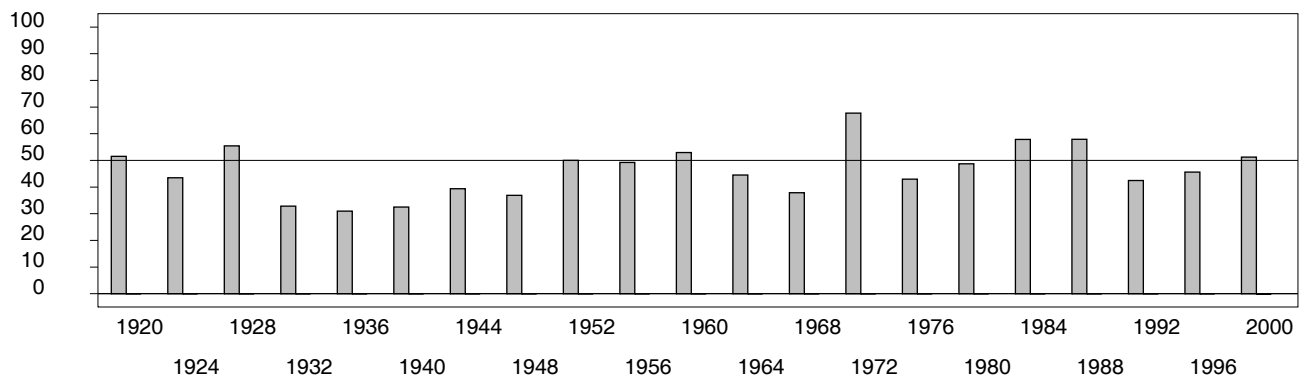


Figure 3. R-DEX: % by which County GOP% is above/below the State GOP%.



1. Statewide Winner in UPPERCASE. Incumbency: * for incumbent, + for party holding seat.
2. BOLDING indicates unit won by REPUBLICANS. Plurality in UPPERCASE indicates unit won with a majority of the vote.
3. Total column may include votes for minor party candidates. An asterisk (*) follows the Total column if it includes votes not listed (see Rem%).
4. % of Marg(in) is Plurality as % of Total Vote. GOP Index (R-Dex) is the percentage (not percentage points) by which GOP% for County is above(+)/below(-) the State GOP%.
5. Order of races is standardized and may not match ballot order. Selected races only; non-competitive lower-ticket races may be omitted.
6. Each race is assigned a specific bar in the graphs. Top of the ticket is darkest bar and is at the left of each year cluster. Races not listed in the history table will result in blank bars.

[47000VHB-psvhy21-DD04]