

Race	Candidate GOP/Dem/Ind	GOP Vote	Dem Vote	Ind Vote	Total Vote	GOP %	Dem %	Ind %	Rem %	Plurality/Win	%of Marg	GOP Index
2002												
Sen	CORNYN+/Kirk	2,496,243	1,955,758	0	4,512,590*	55.3	43.3	0.0	1.3	540,485 R	12.0	0.0
Gov	PERRY+/Sanchez	2,632,591	1,819,798	0	4,551,296*	57.8	40.0	0.0	2.2	812,793 R	17.9	0.0
LiG	DEWHURST+/Sharp+	2,341,875	2,082,281	0	4,523,427*	51.8	46.0	0.0	2.2	259,594 R	5.7	0.0
Land	PATTERSON+/Bernsen+	2,331,700	1,819,365	0	4,386,065*	53.2	41.5	0.0	5.4	512,335 R	11.7	0.0
Rail	WILLIAMS*/Boyles	2,407,036	1,821,751	0	4,391,269*	54.8	41.5	0.0	3.7	585,285 R	13.3	0.0
SCT1	SCHNEIDER/Yanez	2,451,791	1,815,581	0	4,370,298*	56.1	41.5	0.0	2.4	636,210 R	14.6	0.0
SCT2	WAINWRIGHT/Parsons	2,440,799	1,814,354	0	4,331,235*	56.4	41.9	0.0	1.8	626,445 R	14.5	0.0
SCT3	JEFFERSON*/Moody	2,442,111	1,860,251	0	4,302,362	56.8	43.2	0.0	0.0	581,860 R	13.5	0.0
SCT4	SMITH/Mirabel	2,331,140	1,978,081	0	4,309,221	54.1	45.9	0.0	0.0	353,059 R	8.2	0.0
CCA2	WOMACK*/Montgomery	2,463,069	1,828,431	0	4,291,500	57.4	42.6	0.0	0.0	634,638 R	14.8	0.0
2000												
Pres	BUSH+/Gore	3,799,639	2,433,746	12,394	6,407,500*	59.3	38.0	0.2	2.5	1,365,893 R	21.3	0.0
Sen	HUTCHISON*/Kelly	4,082,091	2,030,315	0	6,276,652*	65.0	32.4	0.0	2.6	2,051,776 R	32.7	0.0
CCA2	HERVEY/Barr	3,335,602	2,525,364	0	5,860,966	56.9	43.1	0.0	0.0	810,238 R	13.8	0.0
CCA3	KELLER/Vance	3,312,393	2,591,005	0	5,903,398	56.1	43.9	0.0	0.0	721,388 R	12.2	0.0
1998												
Gov	BUSH*/Mauro	2,550,821	1,165,592	0	3,738,078*	68.2	31.2	0.0	0.6	1,385,229 R	37.1	0.0
LiG	PERRY/Sharp+	1,858,837	1,790,106	0	3,714,093*	50.1	48.2	0.0	1.8	68,731 R	1.9	0.0
AtG	CORNYN/Mattox+	2,002,794	1,631,045	0	3,691,443*	54.3	44.2	0.0	1.6	371,749 R	10.1	0.0
Comp	RYLANDER/Hobby+	1,821,231	1,801,008	0	3,675,775*	49.6	49.0	0.0	1.5	20,223 r	0.6	0.0
Agrc	COMBS+/Patterson	2,021,385	1,511,045	0	3,590,727*	56.3	42.1	0.0	1.6	510,340 R	14.2	0.0
SCT2	O' NEILL/Spector*	1,891,339	1,642,334	0	3,533,673	53.5	46.5	0.0	0.0	249,005 R	7.0	0.0
SCT4	HANKINSON*/Scarborough	1,995,811	1,511,539	0	3,507,350	56.9	43.1	0.0	0.0	484,272 R	13.8	0.0
CCA1	KAESLER/Baird*	1,889,069	1,611,538	0	3,500,607	54.0	46.0	0.0	0.0	277,531 R	7.9	0.0
1996												
Pres	DOLE+/Clinton/Perot	2,736,167	2,459,683	0	5,611,644*	48.8	43.8	0.0	7.4	276,484 r	4.9	0.0
Sen	GRAMM*/Morales	3,027,680	2,428,776	0	5,527,441*	54.8	43.9	0.0	1.3	598,904 R	10.8	0.0
SCT1	CORNYN*/Barron	2,686,518	2,351,750	0	5,167,471*	52.0	45.5	0.0	2.5	334,768 R	6.5	0.0
SCT2	BAKER*/Kelly	2,784,192	2,212,603	0	5,185,721*	53.7	42.7	0.0	3.6	571,589 R	11.0	0.0
CCA1	HOLLAND/Perkins	2,848,961	2,287,958	0	5,136,919	55.5	44.5	0.0	0.0	561,003 R	10.9	0.0
CCA2	WOMACK/Holcomb	2,721,048	2,368,192	0	5,089,240	53.5	46.5	0.0	0.0	352,856 R	6.9	0.0
CCA3	PRICE/Maloney*	2,745,701	2,358,371	0	5,104,072	53.8	46.2	0.0	0.0	387,330 R	7.6	0.0
1994												
Sen	HUTCHISON*/Fisher	2,604,218	1,639,615	0	4,279,940*	60.9	38.3	0.0	0.8	964,603 R	22.5	0.0
Gov	BUSH/Richards*	2,350,994	2,016,928	0	4,396,242*	53.5	45.9	0.0	0.6	334,066 R	7.6	0.0
AtG	Wittig/MORALES*	1,850,403	2,289,389	0	4,263,161*	43.4	53.7	0.0	2.9	438,986 D	10.3	0.0
Comp	Doggett, T./SHARP*	1,860,270	2,318,345	0	4,178,615	44.5	55.5	0.0	0.0	458,075 D	11.0	0.0
Trs	Hartman/WHITEHEAD*	2,060,707	2,085,274	0	4,145,981	49.7	50.3	0.0	0.0	24,567 D	0.6	0.0
Land	Greytok/MAURO*	1,964,931	2,089,279	0	4,162,440*	47.2	50.2	0.0	2.6	124,348 D	3.0	0.0
Rail	MATTHEWS/Nugent*	2,046,614	1,978,759	0	4,110,142*	49.8	48.1	0.0	2.1	67,855 r	1.7	0.0
Rail	RYLANDER/Nabers*	2,133,752	1,841,349	0	4,104,481*	52.0	44.9	0.0	3.2	292,403 R	7.1	0.0
SCT2	HECHT*/Parrott	2,298,116	1,791,823	0	4,089,939	56.2	43.8	0.0	0.0	506,293 R	12.4	0.0
SCT3	OWEN/Carroll	2,294,170	1,747,958	0	4,042,128	56.8	43.2	0.0	0.0	546,212 R	13.5	0.0
CCA1	MANSFIELD/Campbell*	2,122,407	1,811,399	0	3,933,806	54.0	46.1	0.0	0.0	311,008 R	7.9	0.0
CCA2	KELLER/Marshall	2,143,356	1,792,047	0	3,935,403	54.5	45.5	0.0	0.0	351,309 R	8.9	0.0
1992												
Pres	BUSH*/Clinton/Perot	2,496,071	2,281,815	0	6,153,995*	40.6	37.1	0.0	22.4	214,256 r	3.5	0.0
Rail	WILLIAMSON/Guerrero*	3,151,953	2,306,619	410,614	5,874,872*	53.7	39.3	7.0	0.0	845,334 R	14.4	0.0
SCT1	ENOCH/Mauzy*	3,059,529	2,473,309	0	5,738,173*	53.3	43.1	0.0	3.6	586,220 R	10.2	0.0
SCT2	Cook*/SPECTOR	2,697,017	2,948,377	0	5,645,394	47.8	52.2	0.0	0.0	251,360 D	4.5	0.0
SCT3	Montgomery/HIGHTOWER*	2,432,933	3,198,712	0	5,631,645	43.2	56.8	0.0	0.0	765,779 D	13.6	0.0
CCA1	Devany/BAIRD*	2,552,601	2,855,901	0	5,408,502	47.2	52.8	0.0	0.0	303,300 D	5.6	0.0
CCA2	Lagarde/OVERSTREET*	2,667,300	2,781,729	0	5,449,029	49.0	51.1	0.0	0.0	114,429 D	2.1	0.0
CCA3	MEYERS/Benavides*	2,732,689	2,677,996	0	5,410,685	50.5	49.5	0.0	0.0	54,693 R	1.0	0.0

POLIDATA © Demographic and Political Guides. All Rights Reserved. Copyright © 2003. www.polidata.us

1. Statewide Winner in UPPERCASE. Incumbency: * for incumbent, + for party holding seat.

2. BOLDING indicates unit won by REPUBLICANS. Plurality in UPPERCASE indicates unit won with a majority of the vote.

3. Total column may include votes for minor party candidates. An asterisk (*) follows the Total column if it includes votes not listed (see Rem%).

4. % of Marg(in) is Plurality as % of Total Vote. GOP Index (R-Dex) is the percentage (not percentage points) by which GOP% for County is above(+)/below(-) the State GOP%.

5. Order of races is standardized and may not match ballot order. Selected races only; non-competitive lower-ticket races may be omitted.

6. Each race is assigned a specific bar in the graphs. Top of the ticket is darkest bar and is at the left of each year cluster. Races not listed in the history table will result in blank bars.

Figure 1. TOTAL VOTES.

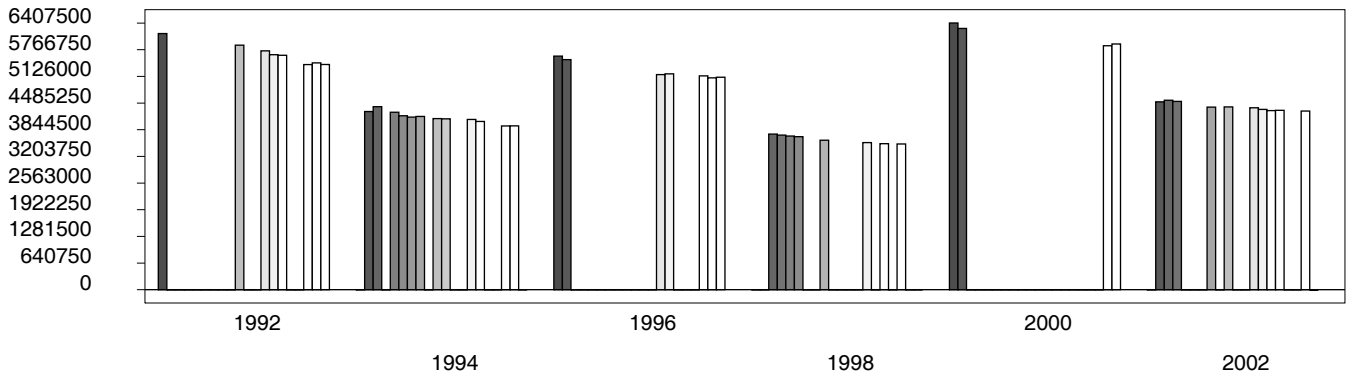


Figure 2. REPUBLICAN %. Refer to GOP-DEX for comparative value.

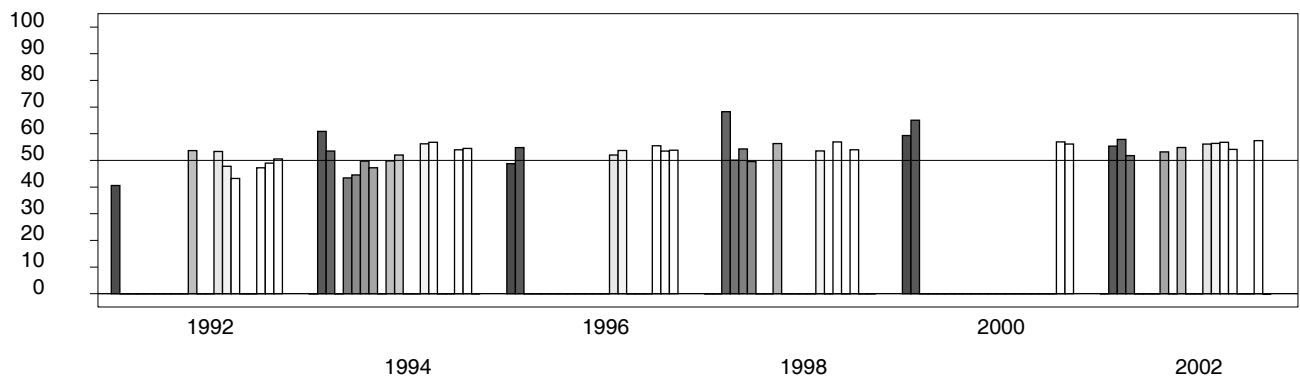


Figure 3. R-DEX: % by which County GOP% is above/below the State GOP%.

