

Race	Candidate GOP/Dem/Ind	GOP Vote	Dem Vote	Ind Vote	Total Vote	GOP %	Dem %	Ind %	Rem %	Plurality/Win	%of Marg	GOP Index
2000												
Pres	BUSH+/ Gore	3,799,639	2,433,746	0	6,407,637*	59.3	38.0	0.0	2.7	1,365,893 R	21.3	0.0
1996												
Pres	DOLE+/ Clinton/Perot	2,736,167	2,459,683	378,537	5,611,644*	48.8	43.8	6.8	0.7	276,484 r	4.9	0.0
1992												
Pres	BUSH*/ Clinton/Perot	2,496,071	2,281,815	1,354,781	6,152,366*	40.6	37.1	22.0	0.3	214,256 r	3.5	0.0
1988												
Pres	BUSH+/ Dukakis	3,036,829	2,352,748	0	5,427,410*	56.0	43.4	0.0	0.7	684,081 R	12.6	0.0
1984												
Pres	REAGAN*/ Mondale	3,433,428	1,949,276	0	5,397,571*	63.6	36.1	0.0	0.3	1,484,152 R	27.5	0.0
1980												
Pres	REAGAN/ Carter*/Anderson	2,510,705	1,881,147	111,613	4,541,636*	55.3	41.4	2.5	0.8	629,558 R	13.9	0.0
1976												
Pres	Ford+/ CARTER	1,953,300	2,082,319	0	4,071,884*	48.0	51.1	0.0	0.9	129,019 D	3.2	0.0
1972												
Pres	NIXON/ McGovern+	2,298,896	1,154,289	0	3,471,281*	66.2	33.3	0.0	0.5	1,144,607 R	33.0	0.0
1968												
Pres	Nixon/ HUMPHREY+/Wallace	1,227,844	1,266,804	584,269	3,079,216*	39.9	41.1	19.0	0.0	38,960 d	1.3	0.0
1964												
Pres	Goldwater/ JOHNSON+	958,566	1,663,185	0	2,626,811*	36.5	63.3	0.0	0.2	704,619 D	26.8	0.0
1960												
Pres	Nixon+/ KENNEDY	1,121,310	1,167,567	0	2,311,084*	48.5	50.5	0.0	1.0	46,257 D	2.0	0.0
1956												
Pres	EISENHOWER*/ Stevenson	1,080,619	859,958	0	1,955,168*	55.3	44.0	0.0	0.8	220,661 R	11.3	0.0
1952												
Pres	EISENHOWER/ Stevenson+	1,102,878	969,228	0	2,075,946*	53.1	46.7	0.0	0.2	133,650 R	6.4	0.0
1948												
Pres	Dewey/ TRUMAN+/Thurmond	303,467	824,235	121,875	1,249,577	24.3	66.0	9.8	0.0	520,768 D	41.7	0.0
1944												
Pres	Dewey/ ROOSEVELT*/TX-Reg.	191,423	821,605	137,306	1,150,334	16.6	71.4	11.9	0.0	630,182 D	54.8	0.0
1940												
Pres	Willkie/ ROOSEVELT*	212,692	909,974	0	1,124,437*	18.9	80.9	0.0	0.2	697,282 D	62.0	0.0
1936												
Pres	Landon/ ROOSEVELT*	104,661	739,952	0	849,701*	12.3	87.1	0.0	0.6	635,291 D	74.8	0.0
1932												
Pres	Hoover*/ ROOSEVELT	98,218	771,109	0	874,191*	11.2	88.2	0.0	0.6	672,891 D	77.0	0.0
1928												
Pres	HOOVER/ Smith+	372,324	344,542	0	717,733*	51.9	48.0	0.0	0.1	27,782 R	3.9	0.0
1924												
Pres	Coolidge/ DAVIS+/LaFollet	130,794	483,381	42,879	657,054	19.9	73.6	6.5	0.0	352,587 D	53.7	0.0
1920												
Pres	Harding/ COX+/et al.	114,658	287,920	83,531	486,109	23.6	59.2	17.2	0.0	173,262 D	35.6	0.0

POLIDATA © Demographic and Political Guides. All Rights Reserved. Copyright © 2003. www.polidata.us

1. Statewide Winner in UPPERCASE. Incumbency: * for incumbent, + for party holding seat.

2. BOLDING indicates unit won by REPUBLICANS. Plurality in UPPERCASE indicates unit won with a majority of the vote.

3. Total column may include votes for minor party candidates. An asterisk (*) follows the Total column if it includes votes not listed (see Rem%).

4. % of Marg(in) is Plurality as % of Total Vote. GOP Index (R-Dex) is the percentage (not percentage points) by which GOP% for County is above(+)/below(-) the State GOP%.

5. Order of races is standardized and may not match ballot order. Selected races only; non-competitive lower-ticket races may be omitted.

6. Each race is assigned a specific bar in the graphs. Top of the ticket is darkest bar and is at the left of each year cluster. Races not listed in the history table will result in blank bars.

Figure 1. TOTAL VOTES.

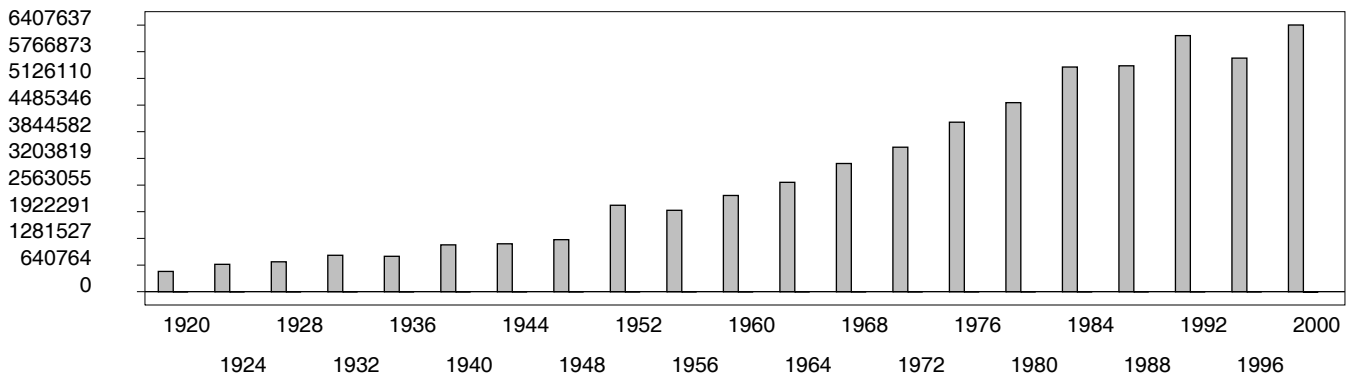


Figure 2. REPUBLICAN %. Refer to GOP-DEX for comparative value.

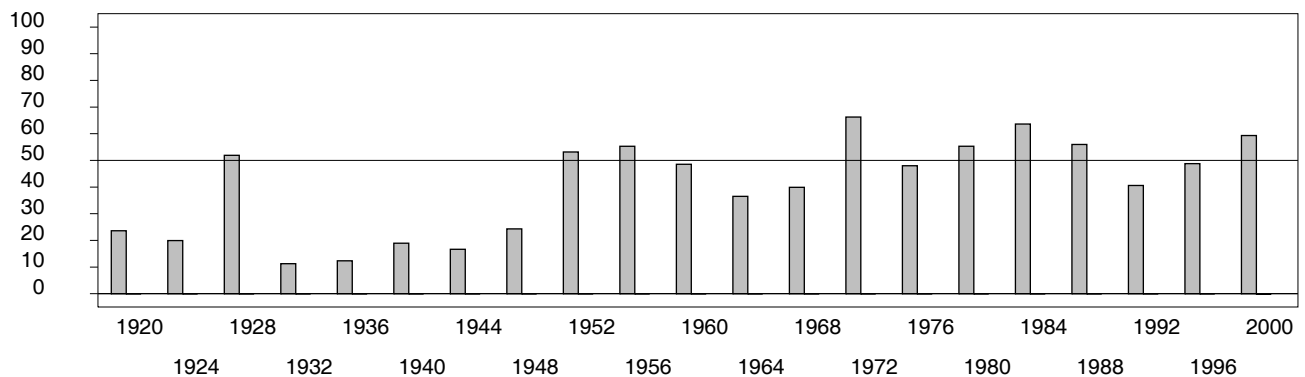
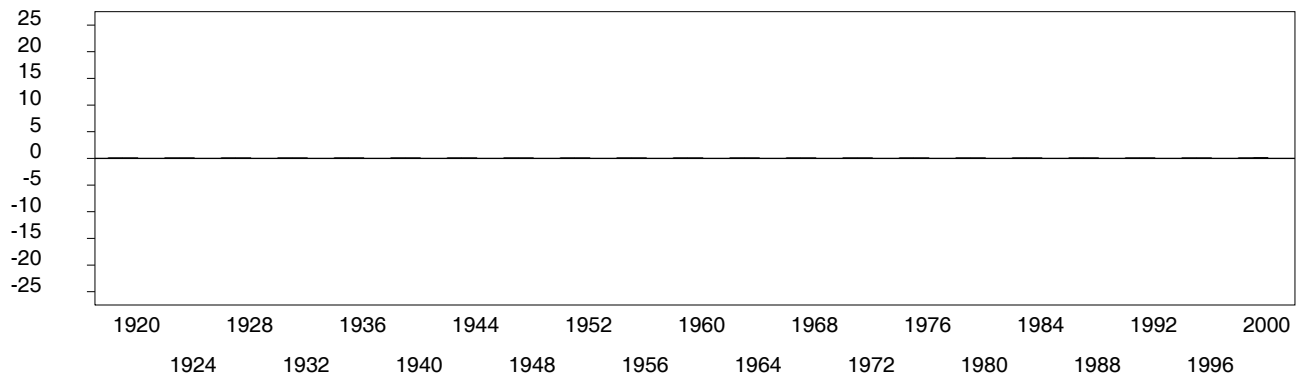


Figure 3. R-DEX: % by which County GOP% is above/below the State GOP%.



1. Statewide Winner in UPPERCASE. Incumbency: * for incumbent, + for party holding seat.

2. BOLDING indicates unit won by REPUBLICANS. Plurality in UPPERCASE indicates unit won with a majority of the vote.

3. Total column may include votes for minor party candidates. An asterisk (*) follows the Total column if it includes votes not listed (see Rem%).

4. % of Marg(in) is Plurality as % of Total Vote. GOP Index (R-Dex) is the percentage (not percentage points) by which GOP% for County is above(+)/below(-) the State GOP%.

5. Order of races is standardized and may not match ballot order. Selected races only; non-competitive lower-ticket races may be omitted.

6. Each race is assigned a specific bar in the graphs. Top of the ticket is darkest bar and is at the left of each year cluster. Races not listed in the history table will result in blank bars.