

Race	Candidate GOP/Dem/Ind	GOP Vote	Dem Vote	Ind Vote	Total Vote	GOP %	Dem %	Ind %	Rem %	Plurality/Win	%of Marg	GOP Index
2000												
Pres	BUSH+/Gore	515,096	203,053	0	770,406*	66.9	26.4	0.0	6.8	312,043 R	40.5	0.0
Sen	HATCH*/Howell	504,803	242,569	0	769,704*	65.6	31.5	0.0	2.9	262,234 R	34.1	0.0
Gov	LEAVITT+/Orton	424,837	321,979	0	761,806*	55.8	42.3	0.0	2.0	102,858 R	13.5	0.0
AtG	SHURTLEFF/Richards+	435,988	299,683	0	757,944*	57.5	39.5	0.0	2.9	136,305 R	18.0	0.0
1998												
Sen	BENNETT*/Leckman	316,652	163,172	0	494,897*	64.0	33.0	0.0	3.1	153,480 R	31.0	0.0
1996												
Pres	DOLE+/Clinton/Perot	361,911	221,633	66,461	665,629*	54.4	33.3	10.0	2.4	140,278 R	21.1	0.0
Gov	LEAVITT*/Bradley	503,693	156,616	0	671,864*	75.0	23.3	0.0	1.7	347,077 R	51.7	0.0
AtG	Burns/GRAHAM*	308,698	351,523	0	670,667*	46.0	52.4	0.0	1.6	42,825 D	6.4	0.0
Aud	JOHNSON+/Truman	366,441	264,896	0	631,337	58.0	42.0	0.0	0.0	101,545 R	16.1	0.0
Trs	ALTER*/Pignanelli	369,586	251,431	0	644,386*	57.4	39.0	0.0	3.6	118,155 R	18.3	0.0
1992												
Pres	BUSH*/Clinton/Perot	322,632	183,429	203,400	743,999*	43.4	24.7	27.3	4.6	119,232 r	16.0	0.0
Sen	BENNETT+/Owens	420,069	301,228	0	758,479*	55.4	39.7	0.0	4.9	118,841 R	15.7	0.0
Gov	LEAVITT+/Hanson/Cook	321,713	177,181	255,753	762,536*	42.2	23.2	33.5	1.0	65,960 r	8.7	0.0
AtG	Burns/GRAHAM+	358,766	364,119	0	740,575*	48.4	49.2	0.0	2.4	5,353 d	0.7	0.0
Aud	ALLEN*/Black	437,982	261,884	0	699,866	62.6	37.4	0.0	0.0	176,098 R	25.2	0.0
Trs	ALTER*/Monson/Ostler	354,932	316,798	46,960	718,690	49.4	44.1	6.5	0.0	38,134 r	5.3	0.0
1988												
Pres	BUSH+/Dukakis	428,442	207,343	0	647,008*	66.2	32.1	0.0	1.7	221,099 R	34.2	0.0
Gov	BANGERTER*/Wilson/Cook	260,462	249,321	136,651	649,114*	40.1	38.4	21.1	0.4	11,141 r	1.7	0.0
AtG	Wilkinson*/VAN DAM	301,438	329,656	0	631,094	47.8	52.2	0.0	0.0	28,218 D	4.5	0.0
Aud	ALLEN*/Miller	367,240	227,207	0	594,447	61.8	38.2	0.0	0.0	140,033 R	23.6	0.0
Trs	ALTER*/Monson	328,380	279,972	0	608,352	54.0	46.0	0.0	0.0	48,408 R	8.0	0.0
1984												
Pres	REAGAN*/Mondale	469,105	155,369	0	629,656*	74.5	24.7	0.0	0.8	313,736 R	49.8	0.0
Gov	BANGERTER/Owens+	351,792	275,669	0	629,619*	55.9	43.8	0.0	0.3	76,123 R	12.1	0.0
Trs	ALTER*/Moss	380,402	219,443	0	599,845	63.4	36.6	0.0	0.0	160,959 R	26.8	0.0
1982												
Sen	HATCH*/Wilson	309,332	219,482	0	530,802*	58.3	41.4	0.0	0.4	89,850 R	16.9	0.0
1980												
Pres	REAGAN+/Carter/Anderson	439,687	124,266	30,284	604,222*	72.8	20.6	5.0	1.7	315,421 R	52.2	0.0

Figure 1. TOTAL VOTES.

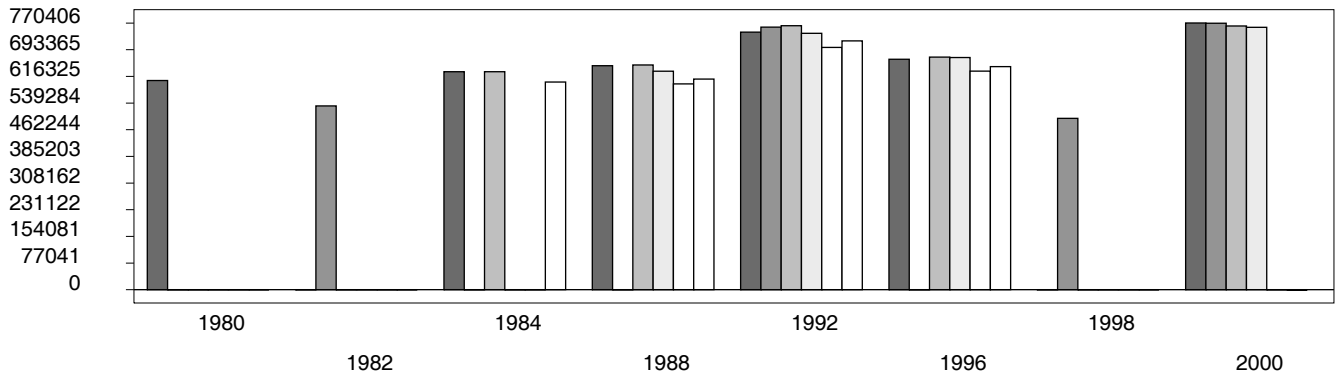


Figure 2. REPUBLICAN %. Refer to GOP-DEX for comparative value.

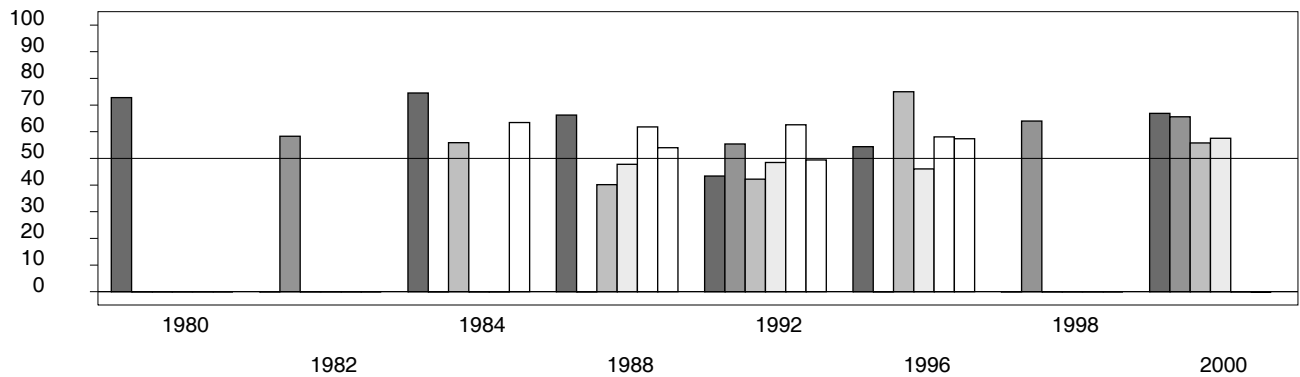


Figure 3. R-DEX: % by which County GOP% is above/below the State GOP%.

