

Race	Candidate GOP/Dem/Ind	GOP Vote	Dem Vote	Ind Vote	Total Vote	GOP %	Dem %	Ind %	Rem %	Plurality/Win	%of Marg	GOP Index
<b>2000</b>												
Pres	BUSH+/Gore	515,096	203,053	0	770,406*	66.9	26.4	0.0	6.8	312,043 R	40.5	0.0
<b>1996</b>												
Pres	DOLE+/Clinton/Perot	361,911	221,633	66,461	665,629*	54.4	33.3	10.0	2.4	140,278 R	21.1	0.0
<b>1992</b>												
Pres	BUSH*/Clinton/Perot	322,632	183,429	203,400	743,999*	43.4	24.7	27.3	4.6	119,232 r	16.0	0.0
<b>1988</b>												
Pres	BUSH+/Dukakis	428,442	207,343	0	647,008*	66.2	32.1	0.0	1.7	221,099 R	34.2	0.0
<b>1984</b>												
Pres	REAGAN*/Mondale	469,105	155,369	0	629,656*	74.5	24.7	0.0	0.8	313,736 R	49.8	0.0
<b>1980</b>												
Pres	REAGAN+/Carter/Anderson	439,687	124,266	30,284	604,222*	72.8	20.6	5.0	1.7	315,421 R	52.2	0.0
<b>1976</b>												
Pres	FORD+/Carter	337,908	182,110	0	541,198*	62.4	33.7	0.0	3.9	155,798 R	28.8	0.0
<b>1972</b>												
Pres	NIXON*/McGovern/Schmitz	323,643	126,284	0	478,476*	67.6	26.4	0.0	6.0	197,359 R	41.3	0.0
<b>1968</b>												
Pres	NIXON/Humphrey+/Wallace	238,728	156,665	26,906	422,568*	56.5	37.1	6.4	0.0	82,063 R	19.4	0.0
<b>1964</b>												
Pres	Goldwater+/JOHNSON	181,785	219,628	0	401,413	45.3	54.7	0.0	0.0	37,843 D	9.4	0.0
<b>1960</b>												
Pres	NIXON+/Kennedy	205,361	169,248	0	374,709*	54.8	45.2	0.0	0.0	36,113 R	9.6	0.0
<b>1956</b>												
Pres	EISENHOWER*/Stevenson	215,631	118,364	0	333,995	64.6	35.4	0.0	0.0	97,267 R	29.1	0.0
<b>1952</b>												
Pres	EISENHOWER/Stevenson+	194,190	135,364	0	329,554	58.9	41.1	0.0	0.0	58,826 R	17.9	0.0
<b>1948</b>												
Pres	Dewey/TRUMAN+	124,402	149,151	0	276,306*	45.0	54.0	0.0	1.0	24,749 D	9.0	0.0
<b>1944</b>												
Pres	Dewey/ROOSEVELT*	97,891	150,088	0	248,319*	39.4	60.4	0.0	0.1	52,197 D	21.0	0.0
<b>1940</b>												
Pres	Willkie/ROOSEVELT*	93,151	154,277	0	247,819*	37.6	62.3	0.0	0.2	61,126 D	24.7	0.0
<b>1936</b>												
Pres	Landon/ROOSEVELT*	64,555	150,248	0	216,679*	29.8	69.3	0.0	0.9	85,693 D	39.6	0.0
<b>1932</b>												
Pres	Hoover*/ROOSEVELT	84,795	116,750	0	206,578*	41.1	56.5	0.0	2.4	31,955 D	15.5	0.0
<b>1928</b>												
Pres	HOOVER+/Smith	94,618	80,985	0	176,603*	53.6	45.9	0.0	0.6	13,633 R	7.7	0.0
<b>1924</b>												
Pres	COOLIDGE+/Davis/LaFollet	77,327	47,001	32,662	156,990	49.3	29.9	20.8	0.0	30,326 r	19.3	0.0
<b>1920</b>												
Pres	HARDING/Cox+	81,555	56,639	0	145,828*	55.9	38.8	0.0	5.2	24,916 R	17.1	0.0

POLIDATA © Demographic and Political Guides. All Rights Reserved. Copyright © 2003. www.polidata.us

1. Statewide Winner in UPPERCASE. Incumbency: \* for incumbent, + for party holding seat.

2. BOLDING indicates unit won by REPUBLICANS. Plurality in UPPERCASE indicates unit won with a majority of the vote.

3. Total column may include votes for minor party candidates. An asterisk (\*) follows the Total column if it includes votes not listed (see Rem%).

4. % of Marg(in) is Plurality as % of Total Vote. GOP Index (R-Dex) is the percentage (not percentage points) by which GOP% for County is above(+)/below(-) the State GOP%.

5. Order of races is standardized and may not match ballot order. Selected races only; non-competitive lower-ticket races may be omitted.

6. Each race is assigned a specific bar in the graphs. Top of the ticket is darkest bar and is at the left of each year cluster. Races not listed in the history table will result in blank bars.

Figure 1. TOTAL VOTES.

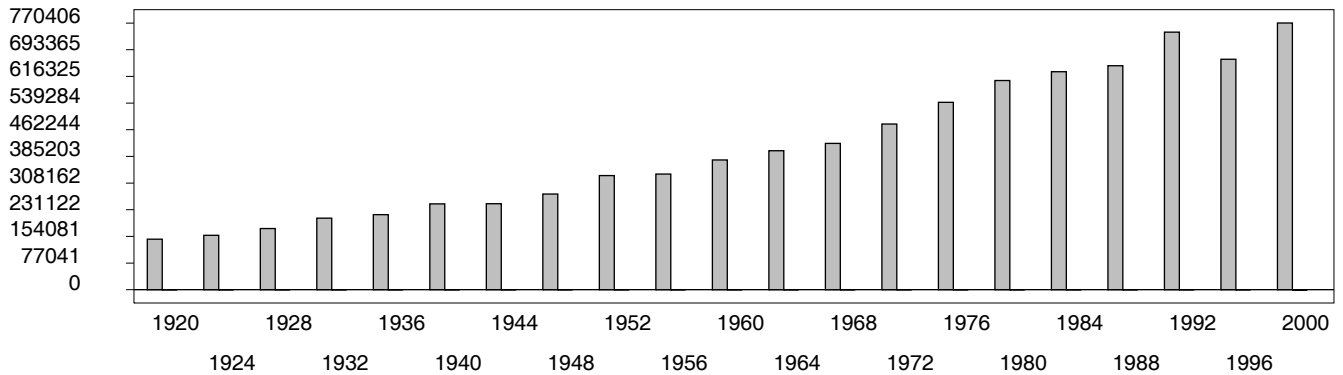


Figure 2. REPUBLICAN %. Refer to GOP-DEX for comparative value.

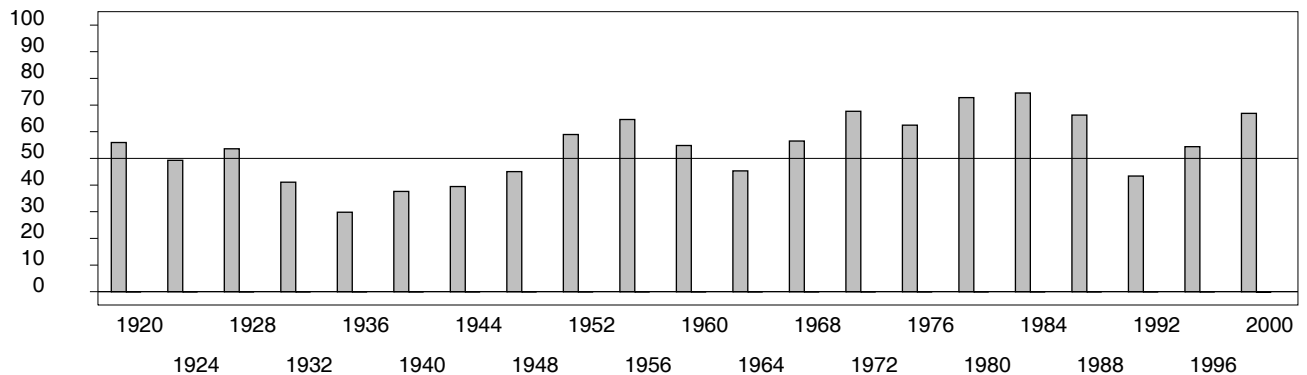


Figure 3. R-DEX: % by which County GOP% is above/below the State GOP%.



1. Statewide Winner in UPPERCASE. Incumbency: \* for incumbent, + for party holding seat.
2. BOLDING indicates unit won by REPUBLICANS. Plurality in UPPERCASE indicates unit won with a majority of the vote.
3. Total column may include votes for minor party candidates. An asterisk (\*) follows the Total column if it includes votes not listed (see Rem%).
4. % of Marg(in) is Plurality as % of Total Vote. GOP Index (R-Dex) is the percentage (not percentage points) by which GOP% for County is above(+)/below(-) the State GOP%.
5. Order of races is standardized and may not match ballot order. Selected races only; non-competitive lower-ticket races may be omitted.
6. Each race is assigned a specific bar in the graphs. Top of the ticket is darkest bar and is at the left of each year cluster. Races not listed in the history table will result in blank bars.

[49000VHB-psvhy21-DC22]