

Race	Candidate GOP/Dem/Ind	GOP Vote	Dem Vote	Ind Vote	Total Vote	GOP %	Dem %	Ind %	Rem %	Plurality/Win	%of Marg	GOP Index
2002												
Gov	DOUGLAS/Racine/Hogan	103,436	97,565	22,353	230,012*	45.0	42.4	9.7	2.9	5,871 r	2.6	0.0
LtG	DUBIE/Shumlin+/Pollina	94,044	73,501	56,564	228,419*	41.2	32.2	24.8	1.9	20,543 r	9.0	0.0
Trs	LaBarge+/SPAULDING	80,229	127,459	0	222,644*	36.0	57.3	0.0	6.7	47,230 D	21.2	0.0
Sec	Bertrand/MARKOWITZ*	82,905	131,469	0	223,508*	37.1	58.8	0.0	4.1	48,564 D	21.7	0.0
Aud	Hyde/READY*	93,342	113,240	0	220,466*	42.3	51.4	0.0	6.3	19,898 D	9.0	0.0
AtG	Drown/SORRELL*/Hill	67,360	125,495	16,152	221,548*	30.4	56.6	7.3	5.7	58,135 D	26.2	0.0
2000												
Pres	Bush/GORE+/Nader	119,775	149,022	0	292,519*	41.0	50.9	0.0	8.1	29,247 D	10.0	0.0
Gov	Dwyer/DEAN*/Pollina	111,359	148,059	28,116	293,217*	38.0	50.5	9.6	1.9	36,700 D	12.5	0.0
LtG	Dubie/RACINE*	118,202	152,561	0	285,801*	41.4	53.4	0.0	5.3	34,359 D	12.0	0.0
Sec	Drown/MARKOWITZ*	101,783	170,403	0	277,836*	36.6	61.3	0.0	2.0	68,620 D	24.7	0.0
Aud	Hall/READY+	116,994	149,724	0	277,995*	42.1	53.9	0.0	4.1	32,730 D	11.8	0.0
1998												
Gov	Dwyer/DEAN*	89,726	121,425	0	217,774*	41.2	55.8	0.0	3.0	31,699 D	14.6	0.0
LtG	Snelling, B./RACINE*	104,351	105,480	0	216,775*	48.1	48.7	0.0	3.2	1,129 d	0.5	0.0
Sec	Milne*/MARKOWITZ	94,635	100,152	0	209,259*	45.2	47.9	0.0	6.9	5,517 d	2.6	0.0
Aud	Dwinell/FLANAGAN*	80,249	107,715	0	206,175*	38.9	52.2	0.0	8.8	27,466 D	13.3	0.0
1996												
Pres	Dole/CLINTON*/Perot	80,352	137,894	31,024	258,449*	31.1	53.4	12.0	3.6	57,542 D	22.3	0.0
Cong	Sweetser/Long/SANDERS*	83,021	23,830	140,678	254,706*	32.6	9.4	55.2	2.8	57,657 O	22.6	0.0
Gov	Gropper/DEAN*	57,161	179,544	0	254,648*	22.5	70.5	0.0	7.1	122,383 D	48.1	0.0
LtG	Carroll+/RACINE	102,818	135,567	0	250,736*	41.0	54.1	0.0	4.9	32,749 D	13.1	0.0
Aud	Morrissey/FLANAGAN*	93,154	118,048	0	237,703*	39.2	49.7	0.0	11.2	24,894 d	10.5	0.0
1994												
Sen	JEFFORDS*/Backus/Mills	106,505	85,868	12,465	211,672*	50.3	40.6	5.9	3.2	20,637 R	9.8	0.0
Cong	Carroll/No Dem./SANDERS*	98,523	0	105,502	211,449*	46.6	0.0	49.9	3.5	6,979 o	3.3	0.0
Gov	Kelley/DEAN*/Morse	40,292	145,661	15,000	212,046*	19.0	68.7	7.1	5.2	105,369 D	49.7	0.0
LtG	SNELLING, B.*/Racine	105,992	98,886	0	210,958*	50.2	46.9	0.0	2.9	7,106 R	3.4	0.0
Sec	MILNE/Hooper*	101,135	85,150	0	202,017*	50.1	42.2	0.0	7.8	15,985 R	7.9	0.0
Aud	Thorn/FLANAGAN*	76,245	103,100	0	198,036*	38.5	52.1	0.0	9.4	26,855 D	13.6	0.0
1992												
Pres	Bush*/CLINTON/Perot	88,122	133,592	65,991	289,701*	30.4	46.1	22.8	0.7	45,470 d	15.7	0.0
Sen	Douglas/LEAHY*	123,854	154,762	0	278,616	44.5	55.6	0.0	0.0	30,908 D	11.1	0.0
Cong	Philbin/Young/SANDERS*	86,901	22,279	162,724	271,904	32.0	8.2	59.9	0.0	75,823 O	27.9	0.0
Gov	McClaghry/DEAN*	65,837	213,523	0	279,360	23.6	76.4	0.0	0.0	147,686 D	52.9	0.0
LtG	SNELLING, B./Wolk+	147,479	121,020	0	268,499	54.9	45.1	0.0	0.0	26,459 R	9.9	0.0
Trs	Smith, M./RUSE*	113,525	134,315	0	247,840	45.8	54.2	0.0	0.0	20,790 D	8.4	0.0
Sec	Milne+/HOOPER/Herbert	116,529	127,649	21,161	265,339	43.9	48.1	8.0	0.0	11,120 d	4.2	0.0
Aud	Crisman+/FLANAGAN/Davenport	107,342	134,752	17,027	259,121	41.4	52.0	6.6	0.0	27,410 D	10.6	0.0
1990												
Cong	Smith, P.*/Sandoval/SAND	82,938	6,315	117,522	208,740*	39.7	3.0	56.3	0.9	34,584 O	16.6	0.0
Gov	SNELLING, R./Welch+	109,540	97,321	0	211,027*	51.9	46.1	0.0	2.0	12,219 R	5.8	0.0
LtG	Bernhardt/DEAN*	80,706	120,956	0	207,993*	38.8	58.2	0.0	3.0	40,250 D	19.4	0.0
Trs	Crisman/RUSE*	80,973	101,968	0	193,562*	41.8	52.7	0.0	5.5	20,995 D	10.9	0.0
Aud	ACEBO*/Boucher/Davenport	95,463	80,167	9,778	192,244*	49.7	41.7	5.1	3.6	15,296 r	8.0	0.0
1988												
Pres	BUSH+/Dukakis	124,331	115,775	0	243,327*	51.1	47.6	0.0	1.3	8,556 R	3.5	0.0
Cong	SMITH, P.+/Poirier/Sande	98,937	45,330	90,026	239,927*	41.2	18.9	37.5	2.4	8,911 r	3.7	0.0
Gov	Bernhardt/KUNIN*	105,319	134,594	0	242,800*	43.4	55.4	0.0	1.2	29,275 D	12.1	0.0
Trs	Walker+/RUSE	96,164	114,322	0	225,092*	42.7	50.8	0.0	6.5	18,158 D	8.1	0.0
Aud	ACEBO*/Rose	128,006	75,852	0	218,920*	58.5	34.7	0.0	6.9	52,154 R	23.8	0.0

POLIDATA © Demographic and Political Guides. All Rights Reserved. Copyright © 2003. www.polidata.us

1. Winner in UPPERCASE. Incumbency: * for incumbent, + for party holding seat.
2. BOLDING indicates unit won by REPUBLICANS. Plurality in UPPERCASE indicates party which won unit won with a majority of the vote.
3. Total column may include votes for minor party candidates. An asterisk (*) follows the Total column if it includes votes not listed (see Rem%).
4. % of Marg(in) is Plurality as % of Total Vote. GOP Index (R-Dex) is the percentage (not percentage points) by which GOP% for County is above(+)/below(-) the State GOP%.
5. Order of races is standardized and may not match ballot order. Selected races only; non-competitive lower-ticket races may be omitted.
6. Each race is assigned a specific bar in the graphs. Top of the ticket is darkest bar and is at the left of each year cluster. Races not listed in the history table will result in blank bars.

Figure 1. TOTAL VOTES.

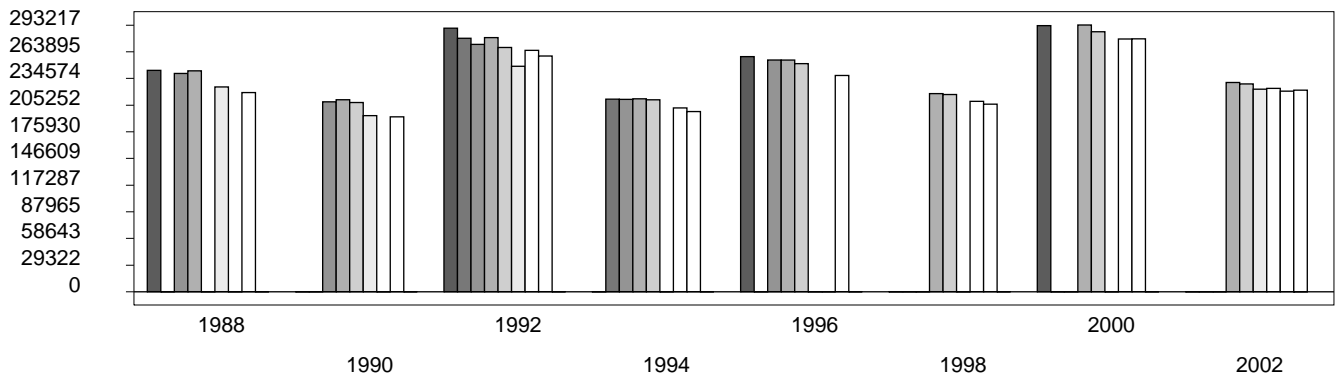


Figure 2. REPUBLICAN %. Refer to GOP-DEX for comparative value.

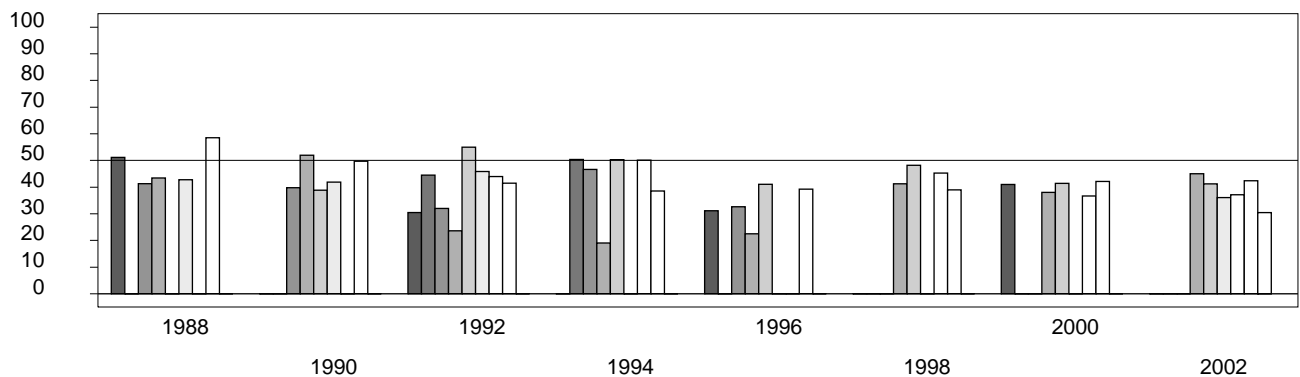


Figure 3. R-DEX: % by which County GOP% is above/below the State GOP%.

