

Race	Candidate GOP/Dem/Ind	GOP Vote	Dem Vote	Ind Vote	Total Vote	GOP %	Dem %	Ind %	Rem %	Plurality/Win	%of Marg	GOP Index
<b>2000</b>												
Pres	Bush/GORE+/Nader	119,775	149,022	0	292,519*	41.0	50.9	0.0	8.1	29,247 D	10.0	0.0
<b>1996</b>												
Pres	Dole/CLINTON*/Perot	80,352	137,894	31,024	258,449*	31.1	53.4	12.0	3.6	57,542 D	22.3	0.0
<b>1992</b>												
Pres	Bush*/CLINTON/Perot	88,122	133,592	65,991	289,701*	30.4	46.1	22.8	0.7	45,470 d	15.7	0.0
<b>1988</b>												
Pres	BUSH+/Dukakis	124,331	115,775	0	243,327*	51.1	47.6	0.0	1.3	8,556 R	3.5	0.0
<b>1984</b>												
Pres	REAGAN*/Mondale	135,865	95,730	0	234,561*	57.9	40.8	0.0	1.3	40,135 R	17.1	0.0
<b>1980</b>												
Pres	REAGAN+/Carter/Anderson	94,628	81,952	31,761	213,299*	44.4	38.4	14.9	2.3	12,676 r	5.9	0.0
<b>1976</b>												
Pres	FORD+/Carter	102,085	80,954	0	187,666*	54.4	43.1	0.0	2.5	21,131 R	11.3	0.0
<b>1972</b>												
Pres	NIXON*/McGovern	117,149	68,174	0	186,947*	62.7	36.5	0.0	0.9	48,975 R	26.2	0.0
<b>1968</b>												
Pres	NIXON/Humphrey+/Wallace	85,142	70,255	5,104	161,404*	52.8	43.5	3.2	0.6	14,887 R	9.2	0.0
<b>1964</b>												
Pres	Goldwater+/JOHNSON	54,942	108,127	0	163,089*	33.7	66.3	0.0	0.0	53,185 D	32.6	0.0
<b>1960</b>												
Pres	NIXON+/Kennedy	98,131	69,186	0	167,324*	58.7	41.4	0.0	0.0	28,945 R	17.3	0.0
<b>1956</b>												
Pres	EISENHOWER*/Stevenson	110,390	42,549	0	152,978*	72.2	27.8	0.0	0.0	67,841 R	44.4	0.0
<b>1952</b>												
Pres	EISENHOWER+/Stevenson	109,717	43,355	0	153,557*	71.5	28.2	0.0	0.3	66,362 R	43.2	0.0
<b>1948</b>												
Pres	DEWEY*/Truman	75,926	45,557	0	123,382*	61.5	36.9	0.0	1.5	30,369 R	24.6	0.0
<b>1944</b>												
Pres	DEWEY+/Roosevelt	71,527	53,820	0	125,361*	57.1	42.9	0.0	0.0	17,707 R	14.1	0.0
<b>1940</b>												
Pres	WILLKIE+/Roosevelt	78,371	64,269	0	143,062*	54.8	44.9	0.0	0.3	14,102 R	9.9	0.0
<b>1936</b>												
Pres	LONDON+/Roosevelt	81,023	62,124	0	143,689*	56.4	43.2	0.0	0.4	18,899 R	13.2	0.0
<b>1932</b>												
Pres	HOOVER*/Roosevelt	78,984	56,266	0	136,980*	57.7	41.1	0.0	1.3	22,718 R	16.6	0.0
<b>1928</b>												
Pres	HOOVER*/Smith	90,404	44,440	0	135,191*	66.9	32.9	0.0	0.3	45,964 R	34.0	0.0
<b>1924</b>												
Pres	COOLIDGE+/Davis/LaFollet	80,498	16,124	6,295	102,917	78.2	15.7	6.1	0.0	64,374 R	62.6	0.0
<b>1920</b>												
Pres	HARDING+/Cox	68,212	20,919	0	89,961*	75.8	23.3	0.0	0.9	47,293 R	52.6	0.0

POLIDATA © Demographic and Political Guides. All Rights Reserved. Copyright © 2003. www.polidata.us

1. Winner in UPPERCASE. Incumbency: \* for incumbent, + for party holding seat.

2. BOLDING indicates unit won by REPUBLICANS. Plurality in UPPERCASE indicates party which won unit won with a majority of the vote.

3. Total column may include votes for minor party candidates. An asterisk (\*) follows the Total column if it includes votes not listed (see Rem%).

4. % of Marg(in) is Plurality as % of Total Vote. GOP Index (R-Dex) is the percentage (not percentage points) by which GOP% for County is above(+)/below(-) the State GOP%.

5. Order of races is standardized and may not match ballot order. Selected races only; non-competitive lower-ticket races may be omitted.

6. Each race is assigned a specific bar in the graphs. Top of the ticket is darkest bar and is at the left of each year cluster. Races not listed in the history table will result in blank bars.

Figure 1. TOTAL VOTES.

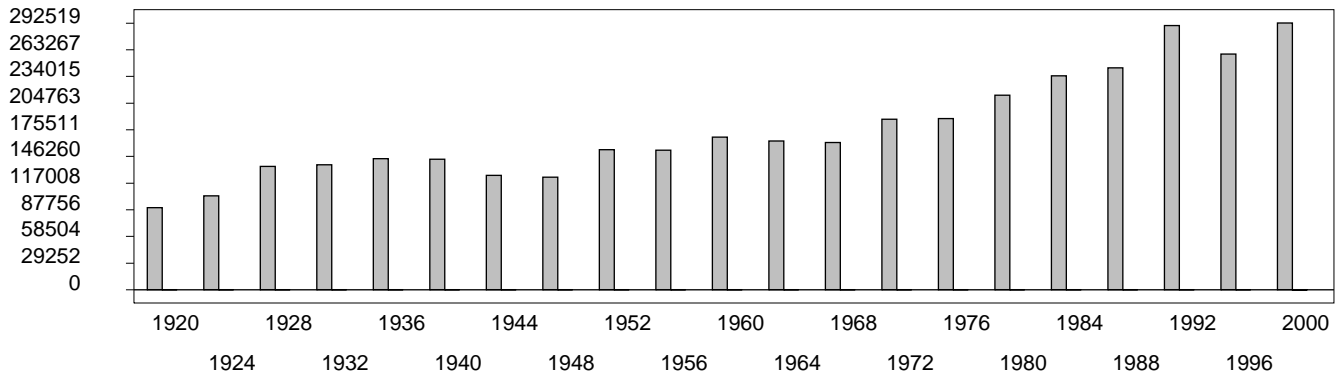


Figure 2. REPUBLICAN %. Refer to GOP-DEX for comparative value.

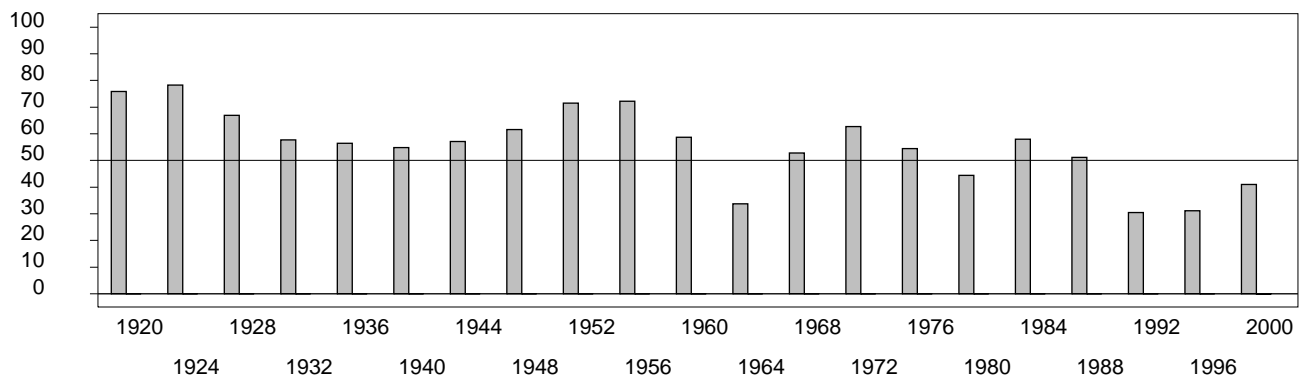


Figure 3. R-DEX: % by which County GOP% is above/below the State GOP%.



1. Winner in UPPERCASE. Incumbency: \* for incumbent, + for party holding seat.
2. BOLDING indicates unit won by REPUBLICANS. Plurality in UPPERCASE indicates party which won unit won with a majority of the vote.
3. Total column may include votes for minor party candidates. An asterisk (\*) follows the Total column if it includes votes not listed (see Rem%).
4. % of Marg(in) is Plurality as % of Total Vote. GOP Index (R-Dex) is the percentage (not percentage points) by which GOP% for County is above(+)/below(-) the State GOP%.
5. Order of races is standardized and may not match ballot order. Selected races only; non-competitive lower-ticket races may be omitted.
6. Each race is assigned a specific bar in the graphs. Top of the ticket is darkest bar and is at the left of each year cluster. Races not listed in the history table will result in blank bars.

[50000VHB-psvhy21-CB24]