

Race	Candidate GOP/Dem/Ind	GOP Vote	Dem Vote	Ind Vote	Total Vote	GOP %	Dem %	Ind %	Rem %	Plurality/Win	%of Marg	GOP Index	
2000													
Pres	Bush/GORE+	1,108,864	1,247,652	0	2,484,740*	44.6	50.2	0.0	5.2	138,788	D	5.6	0.0
Gov	Carlson/LOCKE*	980,060	1,441,973	0	2,469,852*	39.7	58.4	0.0	1.9	461,913	D	18.7	0.0
LtG	Elliott/OWEN*/Bennett	872,853	1,247,838	179,567	2,300,258	38.0	54.3	7.8	0.0	374,985	D	16.3	0.0
Sec	REED+/Bonker	1,073,911	1,063,689	0	2,281,219*	47.1	46.6	0.0	6.3	10,222	r	0.5	0.0
Trs	Rhoades/MURPHY*	905,401	1,266,969	0	2,269,280*	39.9	55.8	0.0	4.3	361,568	D	15.9	0.0
Aud	McEntee/SONNTAG*/Caputo	829,458	1,295,745	123,058	2,248,261	36.9	57.6	5.5	0.0	466,287	D	20.7	0.0
AtG	Pope/GREGOIRE*	883,002	1,292,887	0	2,309,635*	38.2	56.0	0.0	5.8	409,885	D	17.8	0.0
PubL	SUTHERLAND/Lowry+/Layman	154,048	1,052,366	125,985	2,332,399	49.5	45.1	5.4	0.0	101,682	r	4.4	0.0
Ins	Davidson/KREIDLER+	933,568	1,174,039	0	2,199,792*	42.4	53.4	0.0	4.2	240,471	D	10.9	0.0
1998													
Sen	Smith/MURRAY*	785,377	1,103,184	0	1,888,561	41.6	58.4	0.0	0.0	317,807	D	16.8	0.0
1996													
Pres	Dole/CLINTON*/Perot	840,712	1,123,323	201,003	2,253,837*	37.3	49.8	8.9	3.9	282,611	d	12.5	0.0
Gov	Craswell/LOCKE+	940,538	1,296,492	0	2,237,030	42.0	58.0	0.0	0.0	355,954	D	15.9	0.0
LtG	Anderson+/OWEN	989,661	1,022,878	0	2,130,326*	46.5	48.0	0.0	5.5	33,217	d	1.6	0.0
Sec	MUNRO*/Kenney	1,223,769	838,632	0	2,135,630*	57.3	39.3	0.0	3.4	385,137	R	18.0	0.0
Trs	DeYoung/MURPHY+	939,578	1,155,498	0	2,095,076	44.9	55.2	0.0	0.0	215,920	D	10.3	0.0
Aud	Keene/SONNTAG*	747,378	1,338,577	0	2,085,955	35.8	64.2	0.0	0.0	591,199	D	28.3	0.0
AtG	Pope/GREGOIRE*	756,639	1,280,955	0	2,133,586*	35.5	60.0	0.0	4.5	524,316	D	24.6	0.0
PubL	Mackey/BELCHER*	940,154	1,098,548	0	2,106,713*	44.6	52.2	0.0	3.2	158,394	D	7.5	0.0
Ins	Lowe/SENN*	872,280	1,163,832	0	2,102,460*	41.5	55.4	0.0	3.2	291,552	D	13.9	0.0
1994													
Sen	GORTON*/Sims	947,821	752,352	0	1,700,173	55.8	44.3	0.0	0.0	195,469	R	11.5	0.0
1992													
Pres	Bush/CLINTON+/Perot	731,234	993,037	541,780	2,288,230*	32.0	43.4	23.7	1.0	261,803	d	11.4	0.0
Sen	Chandler/MURRAY+	1,020,829	1,197,973	0	2,218,802	46.0	54.0	0.0	0.0	177,144	D	8.0	0.0
Gov	Eikenberry/LOWRY+	1,086,216	1,184,315	0	2,270,531	47.8	52.2	0.0	0.0	98,099	D	4.3	0.0
LtG	PRITCHARD*/Kelley/Nobody	1,072,968	862,063	148,021	2,158,985*	49.7	39.9	6.9	3.5	210,905	r	9.8	0.0
Sec	MUNRO*/Dixon	1,206,414	875,653	0	2,149,020*	56.1	40.8	0.0	3.1	330,761	R	15.4	0.0
Trs	Oliver/GRIMM*	855,671	1,237,527	0	2,093,198	40.9	59.1	0.0	0.0	381,856	D	18.2	0.0
Aud	Reed/SONNTAG+	946,621	1,042,229	0	2,081,668*	45.5	50.1	0.0	4.5	95,608	D	4.6	0.0
AtG	Maleng+/GREGOIRE	946,946	1,190,784	0	2,169,854*	43.6	54.9	0.0	1.5	243,838	D	11.2	0.0
PubL	Anderson+/BELCHER	950,459	1,112,389	0	2,140,797*	44.4	52.0	0.0	3.6	161,930	D	7.6	0.0
Ins	Marquadt*/SENN/McCulloch	894,551	1,049,231	148,280	2,092,062	42.8	50.2	7.1	0.0	154,680	D	7.4	0.0
1988													
Pres	Bush+/DUKAKIS	903,835	933,516	0	1,865,253*	48.5	50.1	0.0	1.5	29,681	D	1.6	0.0
Sen	GORTON+/Lowry	944,359	904,183	0	1,848,542	51.1	48.9	0.0	0.0	40,176	R	2.2	0.0
Gov	Williams/GARDNER*	708,481	1,166,448	0	1,874,929	37.8	62.2	0.0	0.0	457,967	D	24.4	0.0
LtG	PRITCHARD/Fleming+	960,655	839,593	0	1,800,248	53.4	46.6	0.0	0.0	121,062	R	6.7	0.0
Sec	MUNRO*/McKee	1,096,057	653,047	0	1,749,104	62.7	37.3	0.0	0.0	443,010	R	25.3	0.0
Trs	McLauchlan/GRIMM+	839,876	915,225	0	1,755,101	47.9	52.2	0.0	0.0	75,349	D	4.3	0.0
Aud	Reed/GRAHAM*	770,457	958,206	0	1,728,663	44.6	55.4	0.0	0.0	187,749	D	10.9	0.0
AtG	EIKENBERRY*/Erleben	1,103,237	686,152	0	1,789,389	61.7	38.4	0.0	0.0	417,085	R	23.3	0.0
PubL	BOYLE*/Murphy	853,421	810,658	0	1,724,799*	49.5	47.0	0.0	3.5	42,763	r	2.5	0.0
Ins	MARQUADT*/Rainwater	977,079	752,770	0	1,729,849	56.5	43.5	0.0	0.0	224,309	R	13.0	0.0
1986													
Sen	Gorton*/ADAMS	650,931	677,471	0	1,337,367*	48.7	50.7	0.0	0.7	26,540	D	2.0	0.0
1984													
Pres	REAGAN*/Mondale	1,051,670	807,352	0	1,883,910*	55.8	42.9	0.0	1.3	244,318	R	13.0	0.0
SenS	EVANS/Lowry+	672,326	540,981	0	1,213,307	55.4	44.6	0.0	0.0	131,345	R	10.8	0.0
Gov	Spellman*/GARDNER	881,994	1,006,993	0	1,888,987	46.7	53.3	0.0	0.0	124,999	D	6.6	0.0
LtG	Lee/CHERBERG*	649,089	1,119,263	0	1,768,352	36.7	63.3	0.0	0.0	470,174	D	26.6	0.0
Sec	MUNRO*/McKee	1,061,544	667,985	0	1,729,529	61.4	38.6	0.0	0.0	393,559	R	22.8	0.0
Trs	Pilkey/O' BRIEN*	627,913	1,030,483	0	1,725,304*	36.4	59.7	0.0	3.9	402,570	D	23.3	0.0
Aud	Keene/GRAHAM*	700,948	997,326	0	1,698,274	41.3	58.7	0.0	0.0	296,378	D	17.5	0.0
AtG	EIKENBERRY*/Talmadge	1,019,495	777,175	0	1,796,670	56.7	43.3	0.0	0.0	242,320	R	13.5	0.0
PubL	BOYLE/Wiegman/Jennings	899,628	693,596	95,276	1,688,500	53.3	41.1	5.6	0.0	206,032	R	12.2	0.0

POLIDATA © Demographic and Political Guides. All Rights Reserved. Copyright © 2003. www.polidata.us

1. Statewide Winner in UPPERCASE. Incumbency: * for incumbent, + for party holding seat.

2. BOLDING indicates unit won by REPUBLICANS. Plurality in UPPERCASE indicates unit won with a majority of the vote.

3. Total column may include votes for minor party candidates. An asterisk (*) follows the Total column if it includes votes not listed (see Rem%).

4. % of Marg(in) is Plurality as % of Total Vote. GOP Index (R-Dex) is the percentage (not percentage points) by which GOP% for County is above(+)/below(-) the State GOP%.

5. Order of races is standardized and may not match ballot order. Selected races only; non-competitive lower-ticket races may be omitted.

6. Each race is assigned a specific bar in the graphs. Top of the ticket is darkest bar and is at the left of each year cluster. Races not listed in the history table will result in blank bars.

Figure 1. TOTAL VOTES.

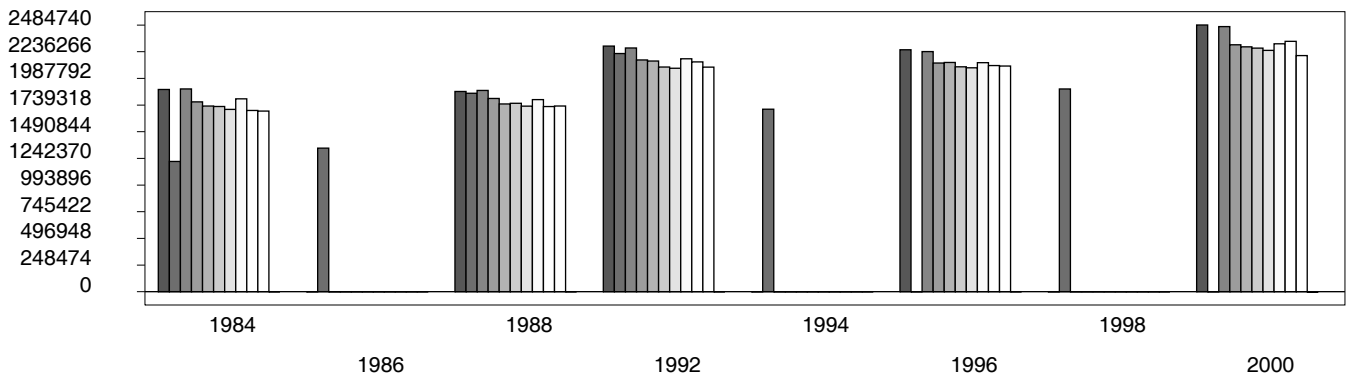


Figure 2. REPUBLICAN %. Refer to GOP-DEX for comparative value.

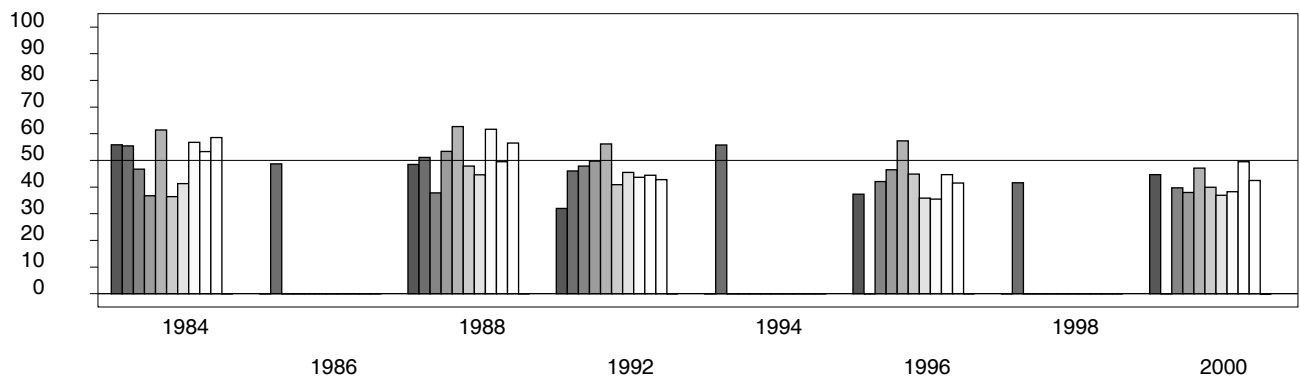
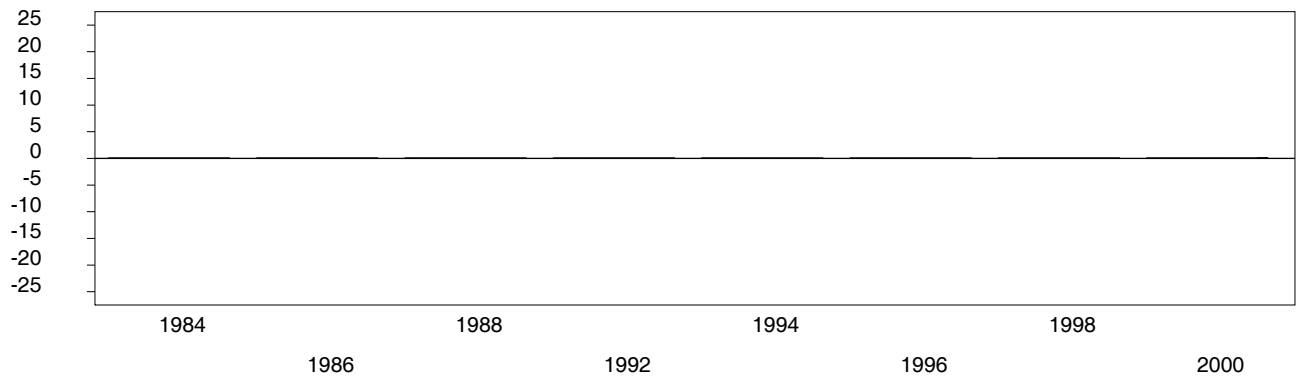


Figure 3. R-DEX: % by which County GOP% is above/below the State GOP%.



1. Statewide Winner in UPPERCASE. Incumbency: * for incumbent, + for party holding seat.

2. BOLDING indicates unit won by REPUBLICANS. Plurality in UPPERCASE indicates unit won with a majority of the vote.

3. Total column may include votes for minor party candidates. An asterisk (*) follows the Total column if it includes votes not listed (see Rem%).

4. % of Marg(in) is Plurality as % of Total Vote. GOP Index (R-Dex) is the percentage (not percentage points) by which GOP% for County is above(+)/below(-) the State GOP%.

5. Order of races is standardized and may not match ballot order. Selected races only; non-competitive lower-ticket races may be omitted.

6. Each race is assigned a specific bar in the graphs. Top of the ticket is darkest bar and is at the left of each year cluster. Races not listed in the history table will result in blank bars.